

PART NUMBER	LED COLOR	
	POSITION 1	POSITION 2
553-0102-400	** BLANK **	GREEN DIFFUSED
553-0111-400	RED DIFFUSED	RED DIFFUSED
553-0112-400	RED DIFFUSED	GREEN DIFFUSED
553-0117-400	RED DIFFUSED	ORANGE DIFFUSED
553-0121-400	GREEN DIFFUSED	RED DIFFUSED
553-0122-400	GREEN DIFFUSED	GREEN DIFFUSED
553-0123-400	GREEN DIFFUSED	YELLOW DIFFUSED
553-0132-400	YELLOW DIFFUSED	GREEN DIFFUSED
553-0133-400	YELLOW DIFFUSED	YELLOW DIFFUSED
553-0172-400	ORANGE DIFFUSED	GREEN DIFFUSED
553-0177-400	ORANGE DIFFUSED	ORANGE DIFFUSED
* 553-0188-400	BLUE DIFFUSED	BLUE DIFFUSED
553-0201-400	** BLANK **	RED 2mA
553-0202-400	** BLANK **	GREEN 2 mA
553-0203-400	** BLANK **	YELLOW 2 mA
553-0211-400	RED 2 mA	RED 2 mA
553-0212-400	RED 2 mA	GREEN 2 mA
553-0213-400	RED 2 mA	YELLOW 2 mA
553-0221-400	GREEN 2 mA	RED 2 mA
553-0222-400	GREEN 2 mA	GREEN 2 mA
553-0223-400	GREEN 2 mA	YELLOW 2 mA
553-0232-400	YELLOW 2 mA	GREEN 2 mA
553-0233-400	YELLOW 2 mA	YELLOW 2 mA
553-0311-400	RED 5 V	RED 5 V
553-0312-400	RED 5 V	GREEN 5 V
553-0313-400	RED 5 V	YELLOW 5 V
553-0322-400	GREEN 5 V	GREEN 5 V
553-0333-400	YELLOW 5 V	YELLOW 5 V
553-0711-400	RED / GREEN	RED / GREEN
553-0744-400	YELLOW / GREEN	YELLOW / GREEN
553-2211-400	RED NON-DIFFUSED	RED NON-DIFFUSED
553-2222-400	GREEN NON-DIFFUSED	GREEN NON-DIFFUSED
553-2233-400	YELLOW NON-DIFFUSED	YELLOW NON-DIFFUSED

5 V., INTEGRAL RESISTOR LED OPERATING CHARACTERISTICS AT 25°C AMBIENT (FOR 553-03XX-400)						
CHARACTERISTICS	L.E.D. COLOR	MIN	TYP	MAX	UNITS	TEST COND.
LUMINOUS INTENSITY	RED	8.7	29		mcd	V _f = 5 V
	YELLOW	3.7	12.6			
	GREEN	5.6	19			
FORWARD CURRENT	RED		10	20	mA	V _f = 5 V
	YELLOW		10	20		
	GREEN		12	20		
REVERSE VOLTAGE	ALL	5			V	I _R = 100µA
PEAK WAVELENGTH	RED		635		nm	MEASURED AT PEAK
	YELLOW		585			
	GREEN		565			
VIEWING ANGLE	ALL		60		Degree	

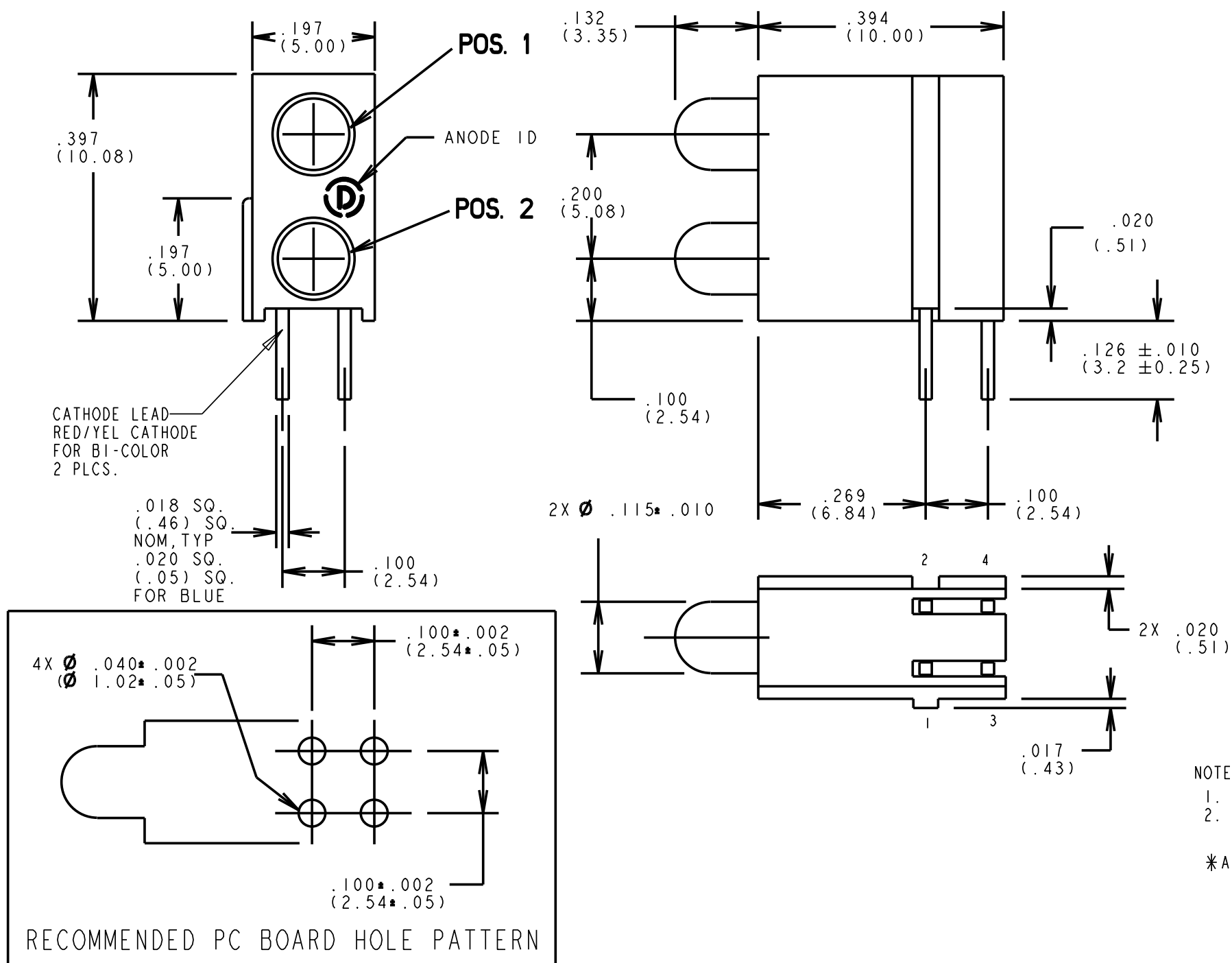
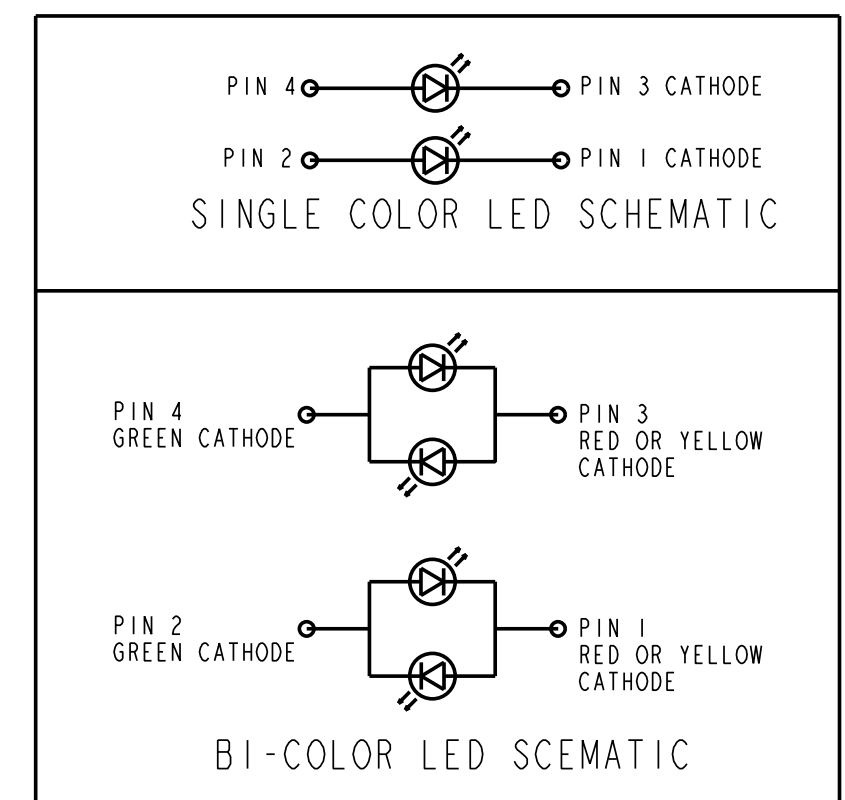
BI-COLOR LED OPERATING CHARACTERISTICS AT 25°C AMBIENT (FOR 553-07XX-400)						
CHARACTERISTICS	L.E.D. COLOR	MIN	TYP	MAX	UNITS	TEST COND.
LUMINOUS INTENSITY	YELLOW/GREEN	2.5			mcd	I _f = 20 mA
	RED/GREEN	2.5				I _f = 10 mA
FORWARD VOLTAGE	YELLOW/GREEN		2.1	2.8	V	I _f = 20 mA
	RED/GREEN		2.0	2.6		
PEAK WAVELENGTH	YELLOW/GREEN		585/565		nm	MEASURED AT PEAK
	RED/GREEN		635/565			
VIEWING ANGLE	YELLOW/GREEN		50		Degree	
	RED/GREEN		80			

10 mA NON-DIFFUSED LED OPERATING CHARACTERISTICS AT 25°C AMBIENT (FOR 553-22XX-400)						
CHARACTERISTICS	L.E.D. COLOR	MIN	TYP	MAX	UNITS	TEST COND.
LUMINOUS INTENSITY	RED	8.7	29		mcd	I _f = 10 mA
	YELLOW	10	50			
	GREEN	32	50			
FORWARD VOLTAGE	RED		2.0	2.8	V	I _f = 10 mA
	YELLOW		2.1	2.8		
	GREEN		2.1	2.8		
REVERSE VOLTAGE	ALL	5			V	I _R = 100µA
PEAK WAVELENGTH	RED		635		nm	MEASURED AT PEAK
	YELLOW		585			
	GREEN		565			
VIEWING ANGLE	ALL		45		Degree	

2 mA LOW CURRENT LED. OPERATING CHARACTERISTICS AT 25°C AMBIENT (FOR 553-02XX-400)						
CHARACTERISTICS	L.E.D. COLOR	MIN	TYP	MAX	UNITS	TEST COND.
LUMINOUS INTENSITY	RED	1.0	1.8		mcd	I _f = 2 mA
	YELLOW	1.0	1.6			
	GREEN	1.0	1.6			
FORWARD VOLTAGE	RED		1.8	2.2	V	I _f = 2 mA
	YELLOW		1.9	2.7		
	GREEN		1.8	2.2		
REVERSE VOLTAGE	ALL	5			V	I _R = 50 µA
PEAK WAVELENGTH	RED		635		nm	MEASURED AT PEAK
	YELLOW		583			
	GREEN		565			
VIEWING ANGLE	ALL		50		Degree	

REV.	ECN NO.	REVISIONS	DRN.	CKD.	APP.	DATE
A	-----	NEW RELEASE	TC	---	N.O.	11-16-97
B	-----	ADDED 553-0111-400 THRU 553-0177-400, 553-0311-400 THRU 553-0333-400, 553-0711-400, 553-0744-400, 553-2211-400, 553-2222-400, 553-2233-400 & CORRESPONDING LED SPECS FOR THESE ASSEMBLIES.	DC	---	N.O.	4-3-98
C	-----	REVISED HIGH EFFICIENCY RED, GREEN & YELLOW LED SPECS.; ADDED NOTE 1.	TC	DC	N.O.	6-24-99
D	-----	ADDED P/N 553-0188-400, NOTE 2, ATTENTION NOTE AND PIN NUMBERS ON BOTTOM VIEW.	TC	DC	N.O.	10-18-99
E	-----	ADDED 553-0117-400 ADDED 553-0102-400	AV	DC	N.O.	2-14-00
F	-----	REVISED 5V, 10 mA NON-DIFF. RED, GRN & YELLOW LED SPECS.	TC	D.C.	N.O.	9-18-00
G	-----	ADDED 553-0112-400	YIS	DC	N.O.	11-6-01
H	-----	ADDED 553-0132-400 AND 553-0172-400	JAV	JMC	Y.C.	11-5-03
J	-----	ADDED 553-0121-400	JMC			

HIGH EFFICIENCY DIFFUSED LED. OPERATING CHARACTERISTICS AT 25°C AMBIENT (FOR 553-01XX-400)						
CHARACTERISTICS	L.E.D. COLOR	MIN	TYP	MAX	UNITS	TEST COND.
LUMINOUS INTENSITY	RED	7.4	10.0		mcd	I _f = 10 mA
	GREEN	4.7	12.6			
	YELLOW	7.4	10.0			
	ORANGE	3.4	7.0			
	BLUE	6.3		20		
FORWARD VOLTAGE	RED		2.0	2.8	V	I _f = 20 mA
	GREEN		2.1	2.8		
	YELLOW		2.1	2.8		
	ORANGE	1.5	2.2	3.0		
REVERSE CURRENT	ALL (EXCEPT BLUE)			100	µA	V _R = 5 V
PEAK WAVELENGTH	RED		635		nm	MEASURED AT PEAK
	GREEN		565			
	YELLOW		585			
	ORANGE		428			
	BLUE		3.4			
VIEWING ANGLE	ALL OTHERS		60		Degree	
	BLUE		70			



NOTE:
1. DIALIGHT PART NUMBER: 553-XXXX-400.
2. PIN NUMBERS FOR REFERENCE ONLY, DESIGNATION NON-EXISTENT ON PART.
*ATTENTION: THIS ASSEMBLY CONTAINS ELECTROSTATIC SENSITIVE DEVICES (ESDS). MAINTAIN ALL PRECAUTIONARY MEASURES DURING ASSEMBLY, HANDLING AND STORAGE IAW IPC-A-610.



ATTENTION:
OBSERVE PRECAUTIONS FOR
HANDLING ELECTROSTATIC
SENSITIVE DEVICES

THIS DRAWING AND THE CONTENTS HEREIN ARE CONFIDENTIAL AND THE SOLE PROPERTY OF DIALIGHT. REPRODUCTION OF THIS DRAWING OR CONSTRUCTION OF ANY PARTS WITHIN THIS DRAWING ARE FORBIDDEN WITHOUT THE WRITTEN CONSENT OF DIALIGHT.		
SCALE: 8:1	DRAWING NUMBER	REV
ALL DIM'S IN: INCHES (MM)	C-16311	J
TOLERANCES: UNLESS OTHERWISE SPECIFIED	TITLE	
FRACTIONS: ±1/64	DIN 41494 BI-LEVEL	
DECIMALS (.XX): ±.02	MATERIAL	
DECIMALS (.XXX): ±.015		
DECIMALS (.XXXX): ±.0005		
ANGLES: ±1°		
FINISH:		
FSCM 83330	SHEET 1 OF 1	FAMILY TABLES:
	Dialight 1501 ROUTE 34 SOUTH FARMINGDALE, NJ 07727	

X-ON Electronics

Largest Supplier of Electrical and Electronic Components

Click to view similar products for [LED Circuit Board Indicators](#) category:

Click to view products by [Dialight](#) manufacturer:

Other Similar products are found below :

[568-0701-841F](#) [LTL-4221NH129](#) [LTL-42DGNMHDP1](#) [HLMP1521101](#) [HLMP1523802F](#) [HLMP1700101F](#) [HLMP1700104F](#) [BHA-1564-G](#)
[SMF-HM1530YD-305](#) [SSF-LXH409SYSUGW](#) [AM2520EHSGD](#) [HLMP1301104F](#) [HLMP1385101F](#) [HLMP1421101](#) [HLMP1503103F](#)
[HLMP1503104F](#) [HLMP1700102F](#) [HLMP1700106F](#) [HLMP1700107F](#) [HLMP1790101F](#) [HLMP1790103F](#) [LTL-4211NHBP](#) [5390H3](#) [551-](#)
[2802F](#) [552-0794-810F](#) [553-0222-812F](#) [HT3-BC-T](#) [564-0700-831F](#) [WP59BLGEW](#) [103-3101-1231-403](#) [5502407811F](#) [550-3007-810F](#) [551-](#)
[3307MF](#) [552080-1](#) [573-2399-100F](#) [592-2020-302F](#) [5932-927-2701-3F](#) [SMF-HM1530SRD-509](#) [SSF-LXH100MID](#) [SSF-LXH2103SRSDRP](#)
[SSF-LXH555USBW](#) [WP937SB/4YGW](#) [WP937EB2EGW](#) [551-0312-802F](#) [553-0110-802F](#) [561-5501-050F](#) [6202T3-5VLC](#) [LTL-307G08A-D](#)
[CMD57164](#) [568-2231-313F](#)