

REV	ECN NO	REVISIONS	DRN	CKD	APP	DATE
A		NEW RELEASE	TWC			

LED COLOR				
PART NUMBER	POS. 1	POS. 2	POS. 3	POS. 4
568-0711-111F	R/G BI-COLOR	R/G BI-COLOR	R/G BI-COLOR	R/G BI-COLOR
568-0714-444F	Y/G BI-COLOR	Y/G BI-COLOR	Y/G BI-COLOR	Y/G BI-COLOR

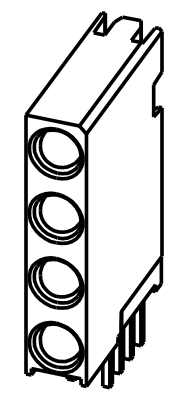
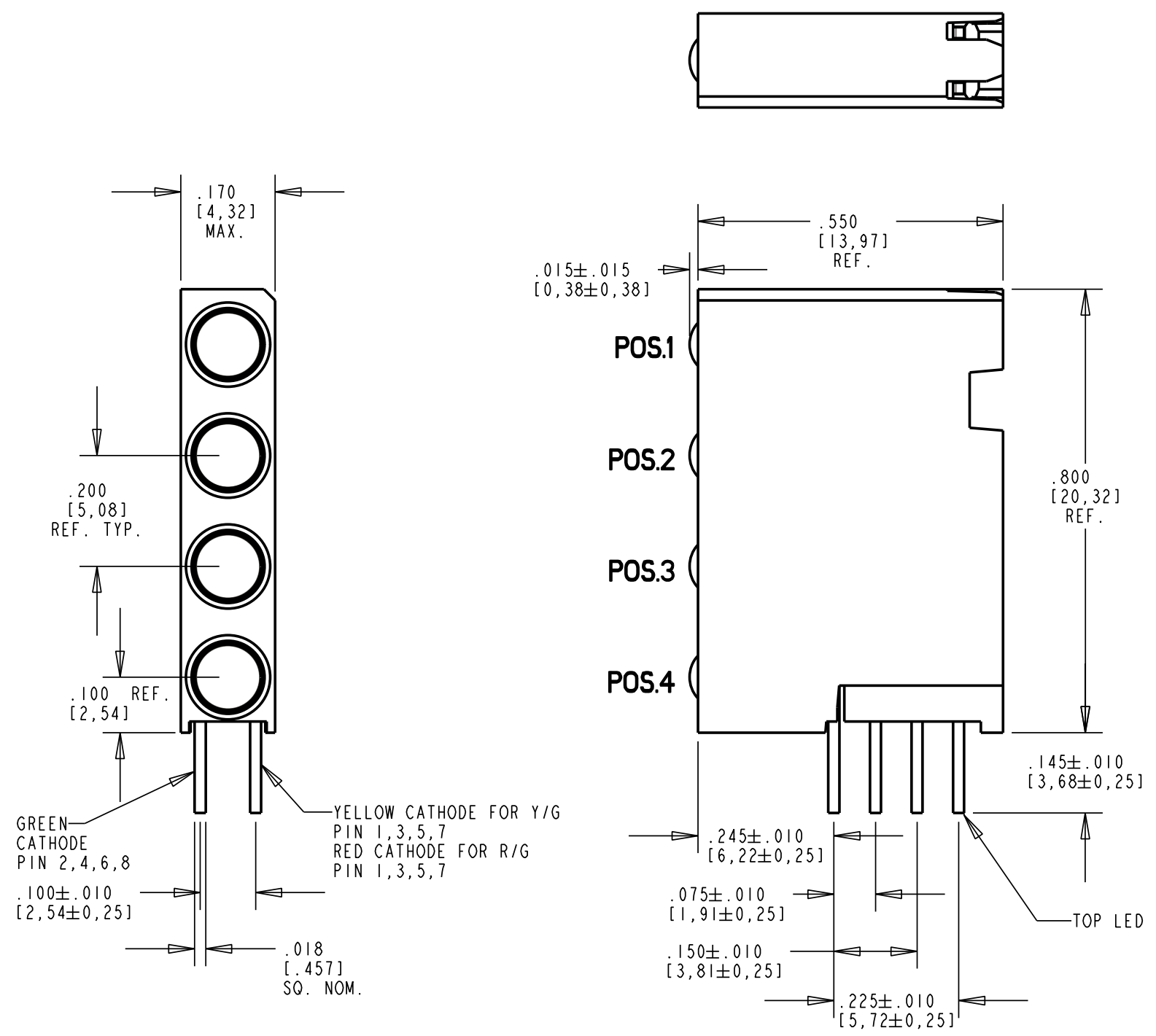
NOTES:  
 1- LEADS TO FIT INTO HOLES SPACED AS PER HOLE PATTERN  
 2- LEADS TO BE FREE OF DEFORMATION AFTER BENDING AND CUTTING  
 3- LEAD DIMENSIONS SHOWN ARE MEASURED AT HOUSING EXIT

OPERATING CHARACTERISTICS AT 25°C AMBIENT							
CHARACTERISTICS	POSITION	COLOR	MIN	TYP	MAX	UNITS	TEST CONDITIONS
LUMINOUS INTENSITY	1, 2, 3, 4	GREEN	3.7	10.0		mcd	I <sub>f</sub> = 10 mA
		RED	2.5	4.7			
FORWARD VOLTAGE	1, 2, 3, 4	GREEN		2.1	2.8	V	I <sub>f</sub> = 20 mA
		RED		2.0	2.8		
PEAK WAVELENGTH	1, 2, 3, 4	GREEN		565		nm	
		RED		635			
VIEWING ANGLE (2 θ 1/2)	1, 2, 3, 4	GREEN		60		Degree	
		RED		60			
CAPACITANCE	1, 2, 3, 4	GREEN		35		pf	V <sub>r</sub> = 0, f = 1 MHz
		RED		20			

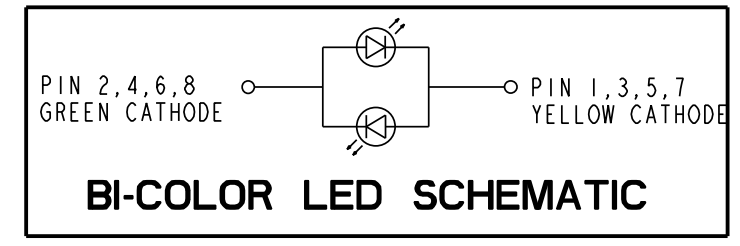
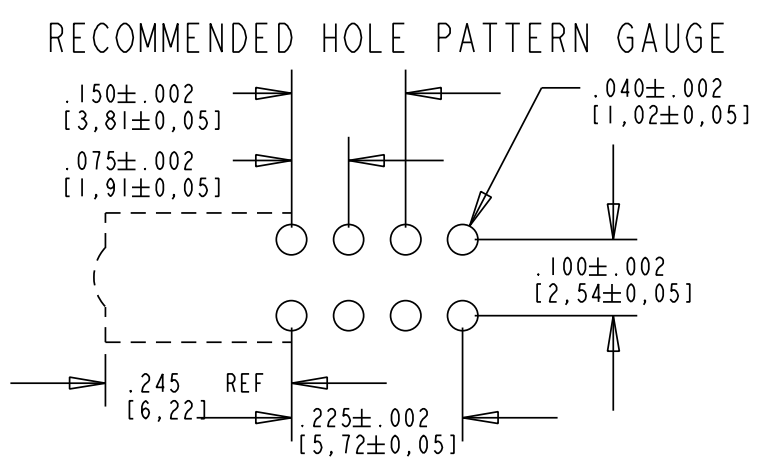
ABSOLUTE MAXIMUM RATING AT 25 °C AMBIENT	POS. 1, 2, 3, 4		UNITS
	GREEN	RED	
POWER DISSIPATION	100		mW
DERATE LINEARLY FROM 50 °C	0.4		mA/°C
CONTINUOUS FORWARD CURRENT	30		mA
PEAK FORWARD CURRENT (1/10 DUTY CYCLE, 0.1 ms PULSE WIDTH)	120		mA
PEAK REVERSE VOLTAGE	5		V
LEAD SOLDERING TEMPERATURE, 5 SEC., 1/16" FROM BODY	260		°C
OPERATING TEMPERATURE	-55 TO +100		°C
STORAGE TEMPERATURE	-55 TO +100		°C

OPERATING CHARACTERISTICS AT 25°C AMBIENT							
CHARACTERISTICS	POSITION	COLOR	MIN	TYP	MAX	UNITS	TEST CONDITIONS
LUMINOUS INTENSITY	1, 2, 3, 4	GREEN	2.5	6.3		mcd	I <sub>f</sub> = 10 mA
		YELLOW	2.5	4.3			
FORWARD VOLTAGE	1, 2, 3, 4	GREEN		2.1	2.8	V	I <sub>f</sub> = 20 mA
		YELLOW		2.1	2.8		
PEAK WAVELENGTH	1, 2, 3, 4	GREEN		565		nm	
		YELLOW		585			
DOMINANT WAVELENGTH	1, 2, 3, 4	GREEN		569		nm	
		YEL (Y3)	585		589		
VIEWING ANGLE (2 θ 1/2)	1, 2, 3, 4	GREEN		80		Degree	
		YELLOW		80			
CAPACITANCE	1, 2, 3, 4	GREEN		35		pf	V <sub>r</sub> = 0, f = 1 MHz
		YELLOW		15			

ABSOLUTE MAXIMUM RATING AT 25 °C AMBIENT	POS. 1, 2, 3, 4		UNITS
	GREEN	YELLOW	
POWER DISSIPATION	100	60	mW
DERATE LINEARLY FROM 50 °C	0.4	0.25	mA/°C
CONTINUOUS FORWARD CURRENT	30	20	mA
PEAK FORWARD CURRENT (1/10 DUTY CYCLE, 0.1 ms PULSE WIDTH)	120	80	mA
LEAD SOLDERING TEMPERATURE, 5 SEC., 1/16" FROM BODY	260		°C
OPERATING TEMPERATURE	-55 TO +100		°C
STORAGE TEMPERATURE	-55 TO +100		°C



SCALE 2.000



**RoHS Compliant 568-071X-XXXX**  
 Part Numbers with the "F" suffix ending are RoHS Compliant.  
 Example: 568-0711-111F  
 Packaging is marked with "RoHS Compliant" label or equivalent markings.  
 Parts can be wave soldered, dip soldered or hand soldered using typical lead-free soldering process with max 260°C temp. for 5 sec.

THIS DRAWING AND THE CONTENTS HEREIN ARE CONFIDENTIAL AND THE SOLE PROPERTY OF DIALIGHT. REPRODUCTION OF THIS DRAWING OR CONSTRUCTION OF ANY PARTS WITHIN THIS DRAWING ARE FORBIDDEN WITHOUT THE WRITTEN CONSENT OF DIALIGHT.		
SCALE: 4.000	DRAWING NUMBER	REV
ALL DIM'S IN: INCHES (MM)	C-17356	A
TOLERANCES: UNLESS OTHERWISE SPECIFIED	TITLE EXTENDED 4X1 BI-COLOR CBI BLOCK ROHS COMPLIANT	
FRACTIONS: ±1/64	MATERIAL	
DECIMALS (.XX): ±.01	FINISH:	
DECIMALS (.XXX): ±.005	FSCM 83330	
DECIMALS (.XXXX): ±.0005	SHEET 1 OF 1 FAMILY TABLE:	
ANGLES: ±1°	Dialight 1501 ROUTE 34 SOUTH FARMINGDALE, NJ 07727	

## X-ON Electronics

Largest Supplier of Electrical and Electronic Components

*Click to view similar products for [LED Circuit Board Indicators](#) category:*

*Click to view products by [Dialight](#) manufacturer:*

Other Similar products are found below :

[568-0701-841F](#) [LTL-4221NH129](#) [LTL-42DGNMHDP1](#) [HLMP1521101](#) [HLMP1523802F](#) [HLMP1700101F](#) [HLMP1700104F](#) [BHA-1564-G](#)  
[SMF-HM1530YD-305](#) [SSF-LXH409SYSUGW](#) [AM2520EHSGD](#) [HLMP1301104F](#) [HLMP1385101F](#) [HLMP1421101](#) [HLMP1503103F](#)  
[HLMP1503104F](#) [HLMP1700102F](#) [HLMP1700106F](#) [HLMP1700107F](#) [HLMP1790101F](#) [HLMP1790103F](#) [LTL-4211NHBP](#) [5390H3](#) [551-](#)  
[2802F](#) [552-0794-810F](#) [553-0222-812F](#) [HT3-BC-T](#) [564-0700-831F](#) [WP59BLGEW](#) [103-3101-1231-403](#) [5502407811F](#) [550-3007-810F](#) [551-](#)  
[3307MF](#) [552080-1](#) [573-2399-100F](#) [592-2020-302F](#) [5932-927-2701-3F](#) [SMF-HM1530SRD-509](#) [SSF-LXH100MID](#) [SSF-LXH2103SRSDRP](#)  
[SSF-LXH555USBW](#) [WP937SB/4YGW](#) [WP937EB2EGW](#) [551-0312-802F](#) [553-0110-802F](#) [561-5501-050F](#) [6202T3-5VLC](#) [LTL-307G08A-D](#)  
[CMD57164](#) [568-2231-313F](#)