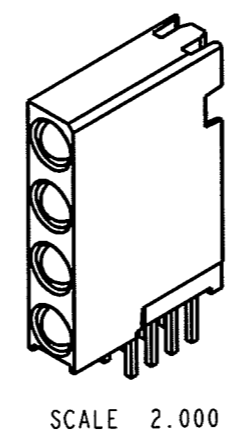
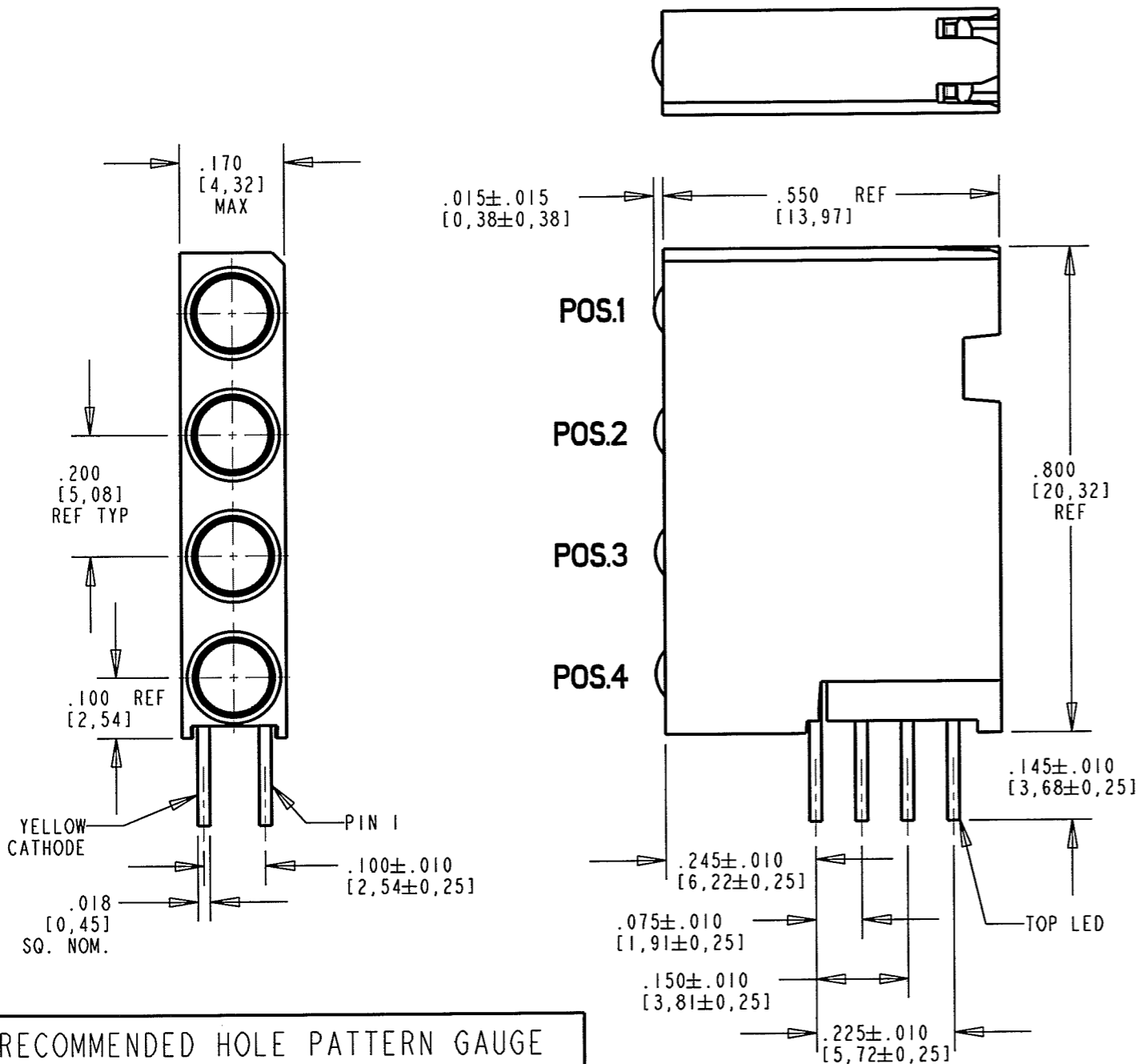


LED COLOR			
POS. 1	POS. 2	POS. 3	POS. 4
Y/G BI-COLOR	Y/G BI-COLOR	Y/G BI-COLOR	Y/G BI-COLOR

RoHS COMPLIANT 568-0714-813F

Part Numbers with the "F" suffix ending are RoHS Compliant.
 For example: 568-0714-813F
 Packaging is marked with "RoHS Compliant" label or equivalent markings. Parts can be wave soldered, dip soldered or hand soldered using typical lead-free soldering process with max 260°C temp. for 5 sec.

REV	ECN NO	REVISIONS	DRN	CKD	APP	DATE
A		NEW RELEASE	KLJ	7.0	4/21	6-4-08

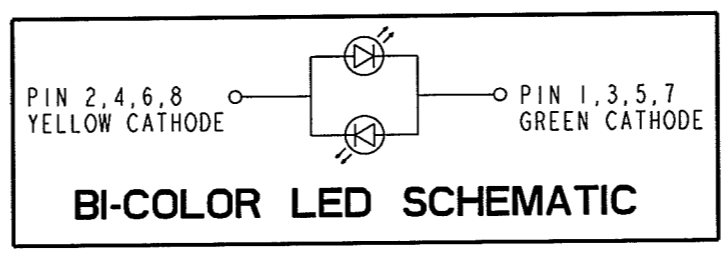
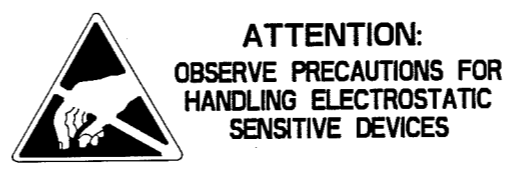
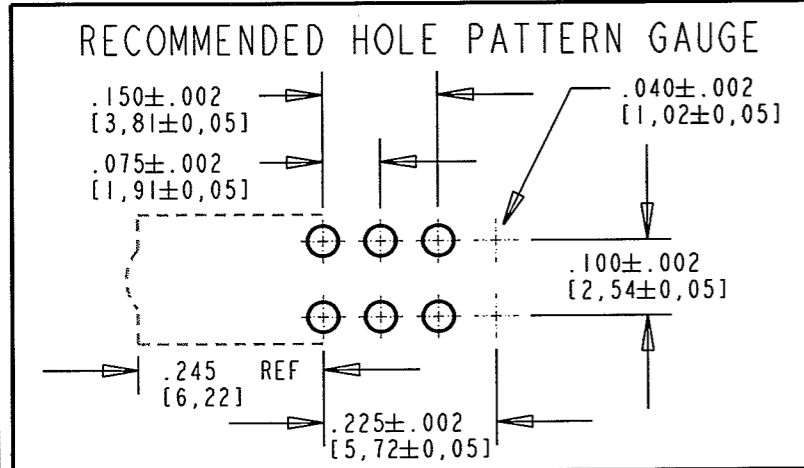


OPERATING CHARACTERISTICS AT 25°C AMBIENT							
CHARACTERISTICS	POSITION	COLOR	MIN	TYP	MAX	UNITS	TEST CONDITIONS
LUMINOUS INTENSITY	1, 2, 3, 4	GREEN	2.5	6.3		mcd	I _F = 10 mA
		YELLOW	2.5	4.3			
FORWARD VOLTAGE	1, 2, 3, 4	GREEN		2.1	2.8	V	I _F = 20 mA
		YELLOW		2.1	2.8		
PEAK WAVELENGTH	1, 2, 3, 4	GREEN		565		nm	
		YELLOW		585			
DOMINANT WAVELENGTH	1, 2, 3, 4	GREEN		569		nm	
		YEL (Y3)	585		589		
VIEWING ANGLE (2 θ 1/2)	1, 2, 3, 4	GREEN		80		Degree	
		YELLOW		80			
CAPACITANCE	1, 2, 3, 4	GREEN		35		pf	V _F = 0, f = 1 MHz
		YELLOW		15			

ABSOLUTE MAXIMUM RATINGS AT 25°C AMBIENT			POS. 1, 2, 3, 4	UNITS	
			GREEN	YELLOW	
POWER DISSIPATION			100	60	mW
DERATE LINEARLY FROM 50°C			0.4	0.25	mA/°C
CONTINUOUS FORWARD CURRENT			30	20	mA
PEAK FORWARD CURRENT (1/10 DUTY CYCLE, 0.1 ms PULSE WIDTH)			120	80	mA
LEAD SOLDERING TEMPERATURE, 5 SEC., 1/16" FROM BODY			260		°C
OPERATING TEMPERATURE			-55 TO +100		°C
STORAGE TEMPERATURE			-55 TO +100		°C

NOTES:

- LED LEAD DIMENSIONS SHOWN ARE MEASURED AT HOUSING EXIT.
- LEADS TO FIT INTO HOLES SPACED AS PER PATTERN.
- PLATING ON LEADS: 30.0-50.0µm PURE TIN (Sn) ON 20.0µm NICKEL (Ni) OVER COPPER (Cu).
- PIN NUMBERS FOR REFERENCE ONLY, DESIGNATION NON-EXISTENT ON PART.
- DIALIGHT PART NUMBERS: 568-0714-813F.
- THIS ASSEMBLY CONTAINS ELECTROSTATIC DISCHARGE SENSITIVE DEVICES (ESDS). MAINTAIN ALL PRECAUTIONARY MEASURES DURING ASSEMBLY, HANDLING, AND STORAGE IN ACCORDANCE WITH IPC-A-610.



THIS DRAWING AND THE CONTENTS HEREIN ARE CONFIDENTIAL AND THE SOLE PROPERTY OF DIALIGHT. REPRODUCTION OF THIS DRAWING OR CONSTRUCTION OF ANY PARTS WITHIN THIS DRAWING ARE FORBIDDEN WITHOUT THE WRITTEN CONSENT OF DIALIGHT.		
SCALE: 4.000 ALL DIM'S IN: INCHES (MM)	DRAWING NUMBER C-17626	REV A
TOLERANCES: UNLESS OTHERWISE SPECIFIED FRACTIONS: ±1/64 DECIMALS (.XX): ±.01 DECIMALS (.XXX): ±.005 DECIMALS (.XXXX): ±.0005 ANGLES: ±1°	TITLE Y/G BI-COLOR CBI BLOCK RoHS COMPLIANT	
FINISH:	MATERIAL	
FSCM 83330	Dialight 1501 ROUTE 34 SOUTH FARMINGDALE, NJ 07727	
	SHEET 1 OF 1 FAMILY TABLE:	

X-ON Electronics

Largest Supplier of Electrical and Electronic Components

Click to view similar products for [LED Circuit Board Indicators](#) category:

Click to view products by [Dialight](#) manufacturer:

Other Similar products are found below :

[568-0701-841F](#) [LTL-4221NH129](#) [LTL-42DGNMHDP1](#) [HLMP1521101](#) [HLMP1523802F](#) [HLMP1700101F](#) [HLMP1700104F](#) [BHA-1564-G](#)
[SMF-HM1530YD-305](#) [SSF-LXH409SYSUGW](#) [AM2520EHSGD](#) [HLMP1301104F](#) [HLMP1385101F](#) [HLMP1421101](#) [HLMP1503103F](#)
[HLMP1503104F](#) [HLMP1700102F](#) [HLMP1700106F](#) [HLMP1700107F](#) [HLMP1790101F](#) [HLMP1790103F](#) [LTL-4211NHBP](#) [5390H3](#) [551-](#)
[2802F](#) [552-0794-810F](#) [553-0222-812F](#) [HT3-BC-T](#) [564-0700-831F](#) [WP59BLGEW](#) [103-3101-1231-403](#) [5502407811F](#) [550-3007-810F](#) [551-](#)
[3307MF](#) [552080-1](#) [573-2399-100F](#) [592-2020-302F](#) [5932-927-2701-3F](#) [SMF-HM1530SRD-509](#) [SSF-LXH100MID](#) [SSF-LXH2103SRSRDRP](#)
[SSF-LXH555USBW](#) [WP937SB/4YGW](#) [WP937EB2EGW](#) [551-0312-802F](#) [553-0110-802F](#) [561-5501-050F](#) [6202T3-5VLC](#) [LTL-307G08A-D](#)
[CMD57164](#) [568-2231-313F](#)