

PART NUMBER	LED COLOR				LED SPEC. CHART.
	POSITION 1	POSITION 2	POSITION 3	POSITION 4	
569-0100-231F	BLANK	GREEN	YELLOW	RED	1
569-0101-111F	RED	RED	RED	RED	1
569-0101-212F	RED	GREEN	RED	GREEN	1
569-0101-232F	RED	GREEN	YELLOW	GREEN	1
569-0101-237F	RED	GREEN	YELLOW	ORANGE	1
569-0101-372F	RED	YELLOW	ORANGE	GREEN	1
569-0101-732F	RED	ORANGE	YELLOW	GREEN	1
*569-0101-970F	RED	BLUE	ORANGE	BLANK	1
569-0102-222F	GREEN	GREEN	GREEN	GREEN	1
569-0102-232F	GREEN	GREEN	YELLOW	GREEN	1
569-0102-233F	GREEN	GREEN	YELLOW	YELLOW	1
569-0102-237F	GREEN	GREEN	YELLOW	ORANGE	1
569-0103-222F	YELLOW	GREEN	GREEN	GREEN	1
569-0103-237F	YELLOW	GREEN	YELLOW	ORANGE	1
569-0103-272F	YELLOW	GREEN	ORANGE	GREEN	1
569-0103-312F	YELLOW	YELLOW	RED	GREEN	1
569-0103-323F	GREEN	YELLOW	GREEN	YELLOW	1
569-0103-333F	YELLOW	YELLOW	YELLOW	YELLOW	1
*569-0103-970F	YELLOW	BLUE	ORANGE	BLANK	1
569-0107-777F	ORANGE	ORANGE	ORANGE	ORANGE	1
*569-0109-999F	BLUE	BLUE	BLUE	BLUE	1
569-0201-111F	RED	RED	RED	RED	2
569-0202-222F	GREEN	GREEN	GREEN	GREEN	2
569-0202-233F	GREEN	GREEN	YELLOW	YELLOW	2
569-0203-333F	YELLOW	YELLOW	YELLOW	YELLOW	2
569-0301-111F	RED	RED	RED	RED	3
569-0302-222F	GREEN	GREEN	GREEN	GREEN	3
569-0302-233F	GREEN	GREEN	YELLOW	YELLOW	3
569-0303-333F	YELLOW	YELLOW	YELLOW	YELLOW	3
569-0701-111F	RED/GREEN	RED/GREEN	RED/GREEN	RED/GREEN	4
569-0701-144F	RED/GREEN	RED/GREEN	YELLOW/GREEN	YELLOW/GREEN	4
569-0704-411F	YELLOW/GREEN	YELLOW/GREEN	RED/GREEN	RED/GREEN	4
569-0704-444F	YELLOW/GREEN	YELLOW/GREEN	YELLOW/GREEN	YELLOW/GREEN	4

SEE NOTE 4

NOTE:

- LED LEAD SPACING MEASURED AT HOUSING EXIT.
- PIN NUMBERS FOR REFERENCE ONLY, DESIGNATION NON-EXISTENT ON PARTS.
- DIALIGHT PART NUMBER: 569-0X0X-XXF.
- ATTENTION: OBSERVE PRECAUTIONS FOR HANDLING ELECTROSTATIC SENSITIVE DEVICES.
- P/N: 569-0109-999F: DIMENSION FOR LED PROTRUSION FROM HOUSING IS .156±.015.

OPERATING CHARACTERISTICS AT 25°C AMBIENT						
CHARACTERISTICS	COLOR	MIN	TYP	MAX	UNITS	TEST CONDITIONS
LUMINOUS INTENSITY	RED	7.4	10.0		mcd	I <sub>f</sub> = 10 mA
	YELLOW	7.4	10.0			
	GREEN	4.7	12.6			
	ORANGE	3.4	7.0			
	BLUE	7.1	12.5	18.0		
FORWARD VOLTAGE	RED		2.0	2.8	V	I <sub>f</sub> = 20 mA
	YELLOW		2.1	2.8		
	GREEN		2.1	2.8		
	ORANGE	1.5	2.2	3.0		
	BLUE		3.5	4.1		
REVERSE VOLTAGE	RED	5			V	I <sub>r</sub> = 100 μA
	YELLOW	5				
	GREEN	5				
	ORANGE	5				
	BLUE	5				
PEAK WAVELENGTH	RED		635		nm	MEASURED AT PEAK
	YELLOW		585			
	GREEN		565			
	ORANGE		600			
	BLUE		428			
VIEWING ANGLE 2 θ 1/2	RED		60		DEG.	
	YELLOW		60			
	GREEN		60			
	ORANGE		60			
	BLUE		70			

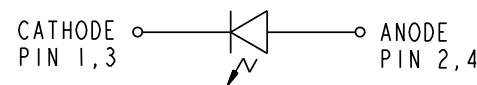


CHART 1

OPERATING CHARACTERISTICS AT 25°C AMBIENT						
CHARACTERISTICS	COLOR	MIN	TYP	MAX	UNITS	TEST CONDITIONS
LUMINOUS INTENSITY	RED	1.0	1.6		mcd	I <sub>f</sub> = 2 mA
	YELLOW	1.0	1.6			
	GREEN	1.0	1.6			
FORWARD VOLTAGE	RED		1.7	2.2	V	I <sub>f</sub> = 2 mA
	YELLOW		1.8	2.2		
	GREEN		1.9	2.7		
REVERSE VOLTAGE	RED	5			V	I <sub>r</sub> = 10 μA
	YELLOW	5				
	GREEN	5				
PEAK WAVELENGTH	RED		635		nm	MEASURED AT PEAK
	YELLOW		583			
	GREEN		565			
VIEWING ANGLE 2 θ 1/2	RED		60		DEG.	
	YELLOW		60			
	GREEN		60			

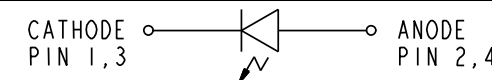


CHART 2

YELLOW/GREEN BI-COLOR LEDS						
OPERATING CHARACTERISTICS AT 25°C AMBIENT						
CHARACTERISTICS	COLOR	MIN	TYP	MAX	UNITS	TEST CONDITIONS
LUMINOUS INTENSITY	YELLOW	2.5	4.3		mcd	I <sub>f</sub> = 10 mA
	GREEN	2.5	6.3			
FORWARD VOLTAGE	YELLOW		2.1	2.8	V	I <sub>f</sub> = 20 mA
	GREEN		2.1	2.8		
PEAK WAVELENGTH	YELLOW		635		nm	MEASURED AT PEAK
	GREEN		565			
VIEWING ANGLE 2 θ 1/2	RED		80		DEG.	
	YELLOW		80			
	GREEN		80			

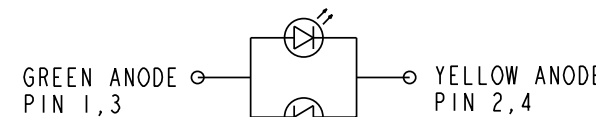
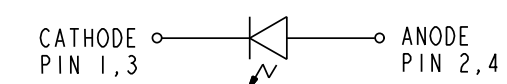


CHART 4

REV	ECN NO	REVISIONS	DRN	CKD	APP	DATE
A		NEW RELEASE	TWC	N.O.	MES	1-6-06
B		ADDED P/N 569-0103-312F	TWC	N.O.	MES	3-27-06
C		ADDED P/N 569-0100-231F	TC			

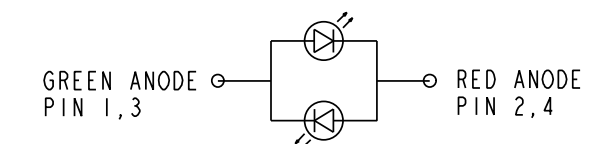
OPERATING CHARACTERISTICS AT 25°C AMBIENT						
CHARACTERISTICS	COLOR	MIN	TYP	MAX	UNITS	TEST CONDITIONS
LUMINOUS INTENSITY	RED	8.7	29.0		mcd	V <sub>f</sub> = 5 V
	YELLOW	3.7	12.6			
	GREEN	5.6	19.0			
FORWARD VOLTAGE	RED		10.0	15.0	V	V <sub>f</sub> = 5 V
	YELLOW		10.0	15.0		
	GREEN		12.0	15.0		
REVERSE VOLTAGE	RED	5			V	I <sub>r</sub> = 100 μA
	YELLOW	5				
	GREEN	5				
PEAK WAVELENGTH	RED		635		nm	MEASURED AT PEAK
	YELLOW		585			
	GREEN		565			
VIEWING ANGLE 2 θ 1/2	RED		60		DEG.	
	YELLOW		60			
	GREEN		60			



INTEGRAL RESISTOR, 5V LED

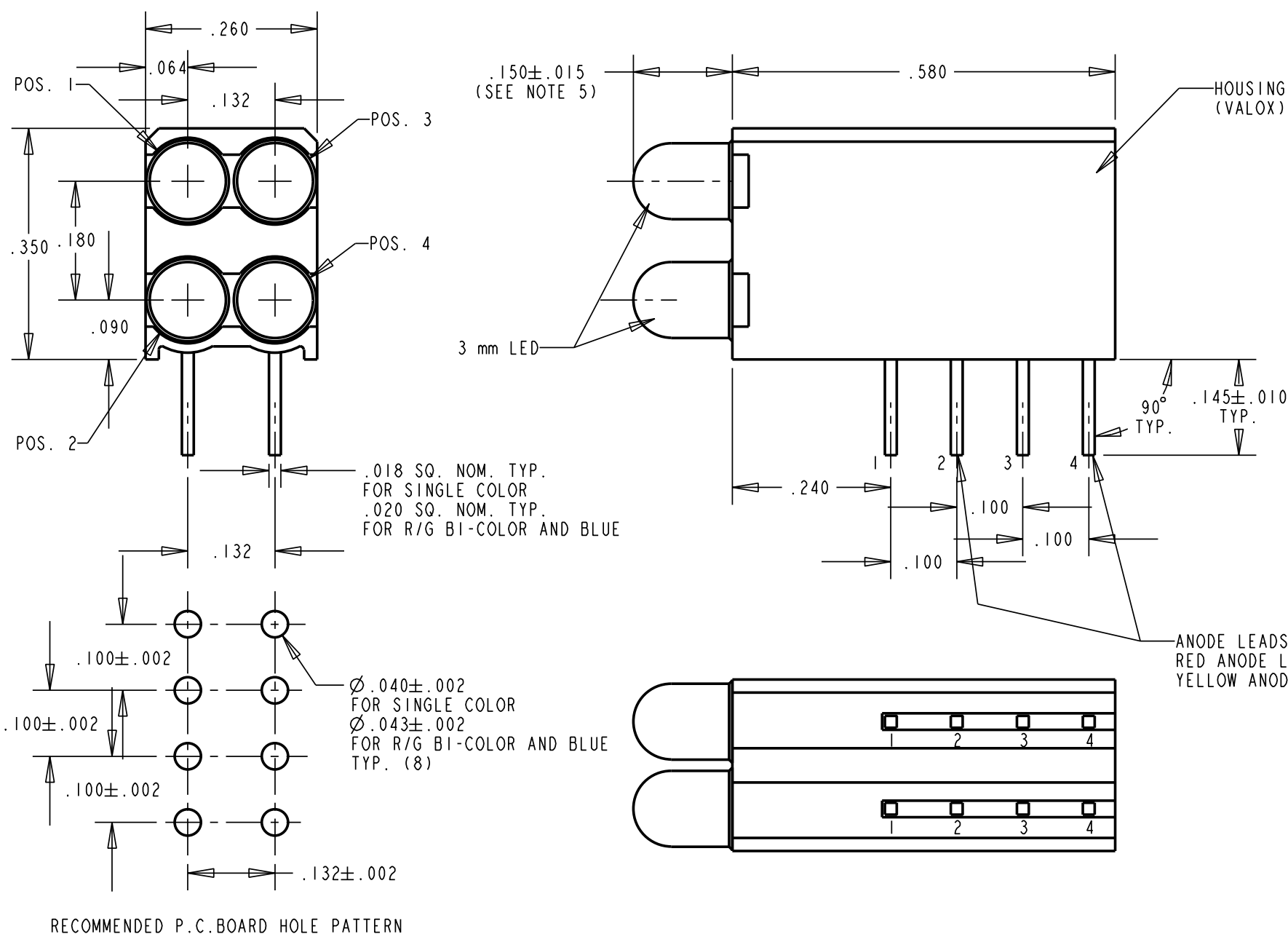
CHART 3

RED/GREEN BI-COLOR LEDS						
OPERATING CHARACTERISTICS AT 25°C AMBIENT						
CHARACTERISTICS	COLOR	MIN	TYP	MAX	UNITS	TEST CONDITIONS
LUMINOUS INTENSITY	RED	1.7	4.7		mcd	I <sub>f</sub> = 20 mA
	GREEN	3.7	10.0			
FORWARD VOLTAGE	RED		2.0	2.8	V	I <sub>f</sub> = 20 mA
	GREEN		2.1	2.8		
PEAK WAVELENGTH	RED		635		nm	MEASURED AT PEAK
	GREEN		565			
REVERSE VOLTAGE	RED	5			V	I <sub>r</sub> = 100 μA
	GREEN	5				
VIEWING ANGLE 2 θ 1/2	RED		60		DEG.	
	GREEN		60			



RoHS Compliant 569-0X0X-XXF Thru hole CBI

Part Numbers with the "F" suffix ending are RoHS Compliant.  
 Example: 569-0101-372F  
 Packaging is marked with "RoHS Compliant" label or equivalent markings.  
 Parts can be wave soldered, dip soldered or hand soldered using typical lead-free soldering process with max 260°C temp. for 5 sec.



ATTENTION:  
OBSERVE PRECAUTIONS FOR  
HANDLING ELECTROSTATIC  
SENSITIVE DEVICES

THIS DRAWING AND THE CONTENTS HEREIN ARE CONFIDENTIAL AND THE SOLE PROPERTY OF DIALIGHT. REPRODUCTION OF THIS DRAWING OR CONSTRUCTION OF ANY PARTS WITHIN THIS DRAWING ARE FORBIDDEN WITHOUT THE WRITTEN CONSENT OF DIALIGHT.		
SCALE: 5:1	DRAWING NUMBER	REV
ALL DIM'S IN: INCHES (MM)	C-17340	C
TOLERANCES: UNLESS OTHERWISE SPECIFIED	TITLE	
FRACTIONS: ±1/64	BI-LEVEL CBI	
DECIMALS (.XX): ±.02	RoHS COMPLIANT	
DECIMALS (.XXX): ±.015	MATERIAL	
DECIMALS (.XXXX): ±.0005	Dialight	
ANGLES: ±1°	1501 ROUTE 34 SOUTH FARMINGDALE, NJ 07727	
FINISH:	FSCM 83330	SHEET 1 OF 1 FAMILY TABLES:

## X-ON Electronics

Largest Supplier of Electrical and Electronic Components

*Click to view similar products for [LED Circuit Board Indicators](#) category:*

*Click to view products by [Dialight](#) manufacturer:*

Other Similar products are found below :

[568-0701-841F](#) [LTL-4221NH129](#) [LTL-42DGNMHDP1](#) [HLMP1521101](#) [HLMP1523802F](#) [HLMP1700101F](#) [HLMP1700104F](#) [BHA-1564-G](#)  
[SMF-HM1530YD-305](#) [SSF-LXH409SYSUGW](#) [AM2520EHSGD](#) [HLMP1301104F](#) [HLMP1385101F](#) [HLMP1421101](#) [HLMP1503103F](#)  
[HLMP1503104F](#) [HLMP1700102F](#) [HLMP1700106F](#) [HLMP1700107F](#) [HLMP1790101F](#) [HLMP1790103F](#) [LTL-4211NHBP](#) [5390H3](#) [551-](#)  
[2802F](#) [552-0794-810F](#) [553-0222-812F](#) [HT3-BC-T](#) [564-0700-831F](#) [WP59BLGEW](#) [103-3101-1231-403](#) [5502407811F](#) [550-3007-810F](#) [551-](#)  
[3307MF](#) [552080-1](#) [573-2399-100F](#) [592-2020-302F](#) [5932-927-2701-3F](#) [SMF-HM1530SRD-509](#) [SSF-LXH100MID](#) [SSF-LXH2103SRSDRP](#)  
[SSF-LXH555USBW](#) [WP937SB/4YGW](#) [WP937EB2EGW](#) [551-0312-802F](#) [553-0110-802F](#) [561-5501-050F](#) [6202T3-5VLC](#) [LTL-307G08A-D](#)  
[CMD57164](#) [568-2231-313F](#)