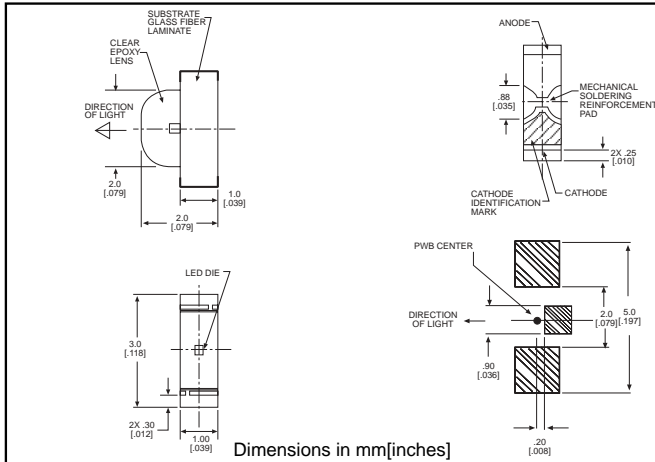


**microLED**®

**Surface Mount LED  
Right Angle Type Package**

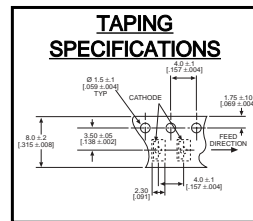
**Dialight**  
**597-2xx1-4xx**

1



**PART NO.\***  
597-2002-4xx  
597-2111-4xx  
597-2201-4xx  
597-2212-4xx  
597-2222-4xx  
597-2311-4xx  
597-2401-4xx

**COLOR**  
Red  
Red  
Orange  
Orange  
Green  
Green  
Yellow



**\*ORDERING INFORMATION**

**597-2xx1-4xx**

packaging option →

02	20 pieces on tape
07	7" reel, 3000 pcs/reel

**Features**

- Compatible with automatic placement equipment
- Compatible with infrared reflow processes
- Packaged on 8mm tape, 7" reels (meets EIA-481-1 standard)
- Helps to eliminate mixed technology PC board processing

<b>ABSOLUTE MAXIMUM RATINGS</b> (T <sub>A</sub> =25°C)	Red <b>-2202</b>	Red <b>-2111</b>	Orange <b>-2201</b>	Orange <b>-2212</b>	Amber <b>-2222</b>	Green <b>-2311</b>	Yellow <b>-2401</b>
Power Dissipation (mW)	81	57.5	70	81	81	70	70
Forward Current (mA)	25	25	25	25	25	25	25
Derating (mA/C°) Above 25°C	.43	.36	.36	.43	.43	.36	.36
Peak Current (mA)	30	60	60	30	30	60	60
Pulse width = 100 μs	100*			100	100		
Operating Temperature (°C)	-40/+85	-30/+85	-30/+85	-40/+85	-40/+85	-30/+85	-30/+85
Storage Temperature (°C)	-40/+100	-40/+100	-40/+100	-40/+100	-40/+100	-40/+100	-40/+100
Soldering Temperature	260°C, 5 seconds max						

Solder Adherence per MIL-STD-202E, Method 208C

<b>OPERATING CHARACTERISTICS</b> (T <sub>A</sub> =25°C)		Red <b>-2202</b>	Red <b>-2111</b>	Orange <b>-2201</b>	Orange <b>-2212</b>	Amber <b>-2222</b>	Green <b>-2311</b>	Yellow <b>-2401</b>
Luminous Intensity (mcd)	Min.	16	6.2	1.5	16	16	2.6	1.5
	Typical	50	12.4	3	65	65	5.2	3
Peak Wavelength (nm)	Typical	630	660	605	609	592	560	580
λ Peak								
Viewing Angle (2θ 1/2)	Typical	130°	130°	130°	130°	130°	130°	130°
Forward Voltage (V)	Typical	1.9	1.7	2.2	1.9	1.9	2.1	2.2
	Max.	2.4	2.3	2.8	2.4	2.4	2.8	2.8
Reverse Current (μA)	Max	100*	100	100	100	100*	100	100
(V <sub>R</sub> = 4V) * (V <sub>R</sub> = 5V)								

θ 1/2 is the off axis angle at which the luminous intensity is half the axial luminous intensity

## X-ON Electronics

Largest Supplier of Electrical and Electronic Components

*Click to view similar products for [Standard LEDs - SMD category](#):*

*Click to view products by [Dialight manufacturer](#):*

Other Similar products are found below :

[LTST-C190KYKT](#) [LTST-C19GD2WT](#) [LTST-N683GBEW](#) [LTW-170ZDC](#) [598-8110-100F](#) [598-8170-100F](#) [598-8610-202F](#) [67-22VRVGC/TR8](#) [AAAF5060QBFSEEZGS](#) [HLMP-6305-L0011](#) [APT1608QGW](#) [15-21UYC/S530-A3/TR8](#) [EAST2012YA0](#) [EASV1803BA0](#) [LG M67K-H1J2-24-0-2-R18-Z](#) [LS A676-P2S1-1](#) [SML310BATT86](#) [SML-LX0606SISUGC/A](#) [SML-LXL1307SRC-TR](#) [SML-LXR851SIUPGUBC](#) [LT1ED53A](#) [FAT801-S](#) [AM27ZGC03](#) [APB3025SGNC](#) [APFA3010SURKCGKQBDC](#) [APHK1608VGCA](#) [APT2012QGW](#) [LTST-C250KGKT](#) [LTW-010DCG](#) [LTW-020ZDCG](#) [LTW-21TS5](#) [LTW-220DS5](#) [LY L29K-H1J2-26](#) [JANTXM19500/521-02](#) [UYGT801-S](#) [42-21UYC/S530-A3/TR8](#) [LO T67F-V1AB-24-1](#) [YGFR411-H](#) [598-8330-117F](#) [SML-LX0402IC-TR](#) [CMDA20AYAA7D1S](#) [CMDA16AYDR7A1X](#) [598-8040-100F](#) [598-8070-100F](#) [598-8140-100F](#) [598-8610-200F](#) [EAST2012GA0](#) [EAPL3527GA5](#) [SML-LXL1209SYC/ATR](#) [EASV3020YGA0](#)