

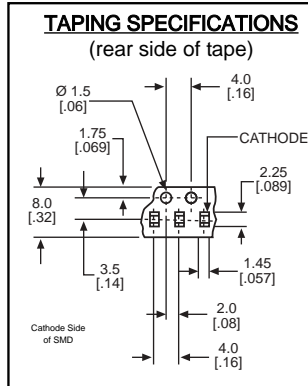
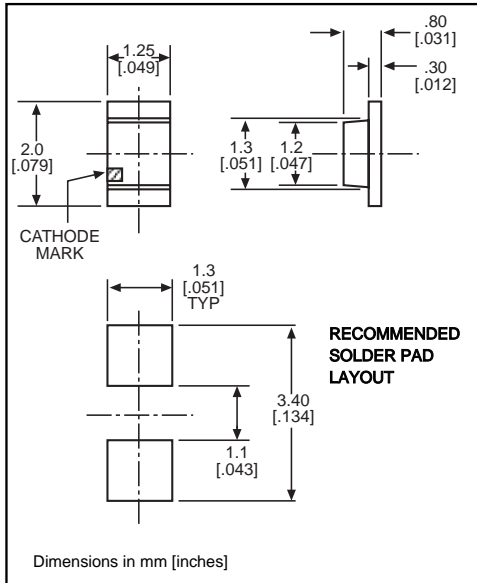


Surface Mount LED 0805 Type Package High Intensity LEDs



597-3xxx-4xx
597-5x11-4xx
597-5202-4xx

1



***ORDERING INFORMATION**

597-3xxx-4xx

packaging option →

02	20 pieces on tape
07	7" reel, 4000 pcs/reel

PART NO.*	COLOR
597-3003-4xx	AllnGaP Red
597-3212-4xx	Orange
597-3222-4xx	Yellow
597-5111-4xx	Red
597-5202-4xx	Orange
597-5311-4xx	Green
597-5411-4xx	Yellow

Features

- Very bright light output
- Highly efficient AllnGaP die
- Compatible with automatic placement equipment
- Compatible with infrared reflow processes
- Packaged on 8mm tape, 7" reels (meets EIA-481-1 standard)
- Compatible with Dialight's Optopipe™ Series light pipes

ABSOLUTE MAXIMUM RATINGS (T _A =25°C)	AllnGaP Red	Orange	Yellow	Red	Orange	Green	Yellow
	-3003	-3212	-3222	-5111	-5202	-5311	-5411
Power Dissipation (mW)	81	81	81	57.5	70	70	70
Forward Current (mA)	30	30	30	25	25	25	25
Derating (mA/°C) From 25°C	.43	.43	.43	.36	.36	.36	.36
Peak Current (mA) <i>Pulse width = 1 μs</i>	100	100	100	60	60	60	60
Operating Temperature (°C)	-40/+85	-40/+85	-40/+85	-30/+85	-30/+85	-30/+85	-30/+85
Storage Temperature (°C)	-40/+100	-40/+100	-40/+100	-40/+100	-40/+100	-40/+100	-40/+100
Soldering Profile	280°C peak 3 seconds			240°C peak 5 seconds			

Solder Adherence per MIL-STD-202E, Method 208C

OPERATING CHARACTERISTICS (T _A =25°C)		AllnGaP Red	Orange	Yellow	Red	Orange	Green	Yellow
		-3003	-3212	-3222	-5111	-5202	-5311	-5411
Luminous Intensity (mcd)	Min.	16	16	16	7	2.2	3.8	7
	Typical I _F =20mA	50	65	65	11.7	3.7	6.4	11.7
Peak Wavelength (nm) λ Peak	Typical	630	609	594	660	605	560	570
Viewing Angle (2θ ^{1/2})	Typical	156°	156°	156°	140°	140°	140°	140°
Forward Voltage (V) I _F =20mA	Typical	1.9	1.9	1.9	1.7	2.2	2.1	2.1
	Max.	2.4	2.4	2.4	2.3	2.8	2.8	2.8
Reverse Current (μA) (V _R = 5V)	Max	100	100	100	100	100	100	100

θ_{1/2} is the off axis angle at which the luminous intensity is half the axial luminous intensity

X-ON Electronics

Largest Supplier of Electrical and Electronic Components

Click to view similar products for [Standard LEDs - SMD category](#):

Click to view products by [Dialight manufacturer](#):

Other Similar products are found below :

[LTST-C190KYKT](#) [LTST-C19GD2WT](#) [LTST-N683GBEW](#) [LTW-170ZDC](#) [598-8110-100F](#) [598-8170-100F](#) [598-8610-202F](#) [67-22VRVGC/TR8](#) [AAAF5060QBFSEEZGS](#) [HLMP-6305-L0011](#) [APT1608QGW](#) [15-21UYC/S530-A3/TR8](#) [EAST2012YA0](#) [EASV1803BA0](#) [LG M67K-H1J2-24-0-2-R18-Z](#) [LS A676-P2S1-1](#) [SML310BATT86](#) [SML-LX0606SISUGC/A](#) [SML-LXL1307SRC-TR](#) [SML-LXR851SIUPGUBC](#) [LT1ED53A](#) [FAT801-S](#) [AM27ZGC03](#) [APB3025SGNC](#) [APFA3010SURKCGKQBDC](#) [APHK1608VGCA](#) [APT2012QGW](#) [LTST-C250KGKT](#) [LTW-010DCG](#) [LTW-020ZDCG](#) [LTW-21TS5](#) [LTW-220DS5](#) [LY L29K-H1J2-26](#) [JANTXM19500/521-02](#) [UYGT801-S](#) [42-21UYC/S530-A3/TR8](#) [LO T67F-V1AB-24-1](#) [YGFR411-H](#) [598-8330-117F](#) [SML-LX0402IC-TR](#) [CMDA20AYAA7D1S](#) [CMDA16AYDR7A1X](#) [598-8040-100F](#) [598-8070-100F](#) [598-8140-100F](#) [598-8610-200F](#) [EAST2012GA0](#) [EAPL3527GA5](#) [EASV3020YGA0](#) [EAST1608RGBAO](#)