

Surface Mount LED 0603 Type Package

597-5004-4xx
597-5x12-4xx
597-52x3-4xx

PART NO.*

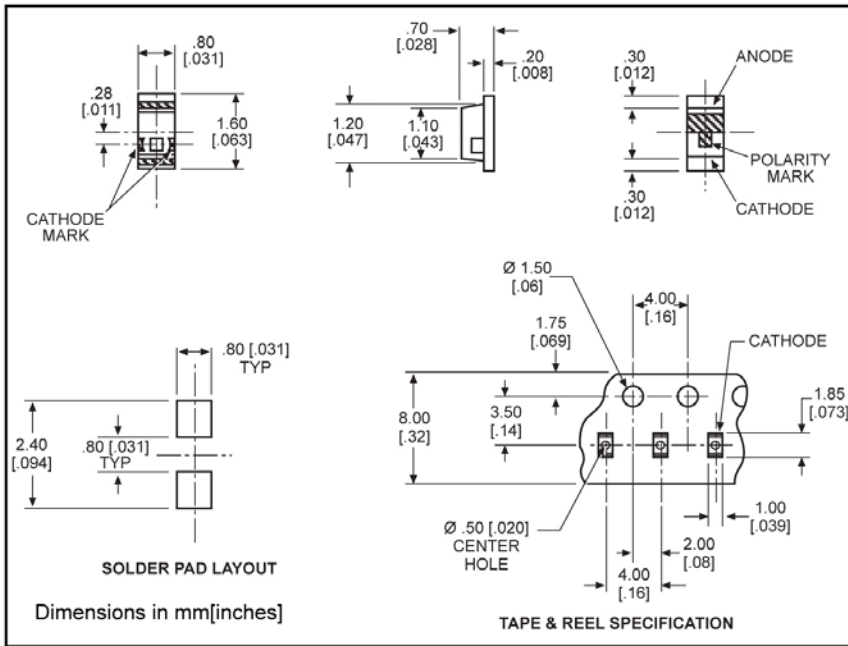
597-5004-4xx
597-5112-4xx
597-5203-4xx
597-5213-4xx
597-5223-4xx
597-5312-4xx
597-5412-4xx

COLOR

AllnGaP Red
Red
Orange
AllnGaP Orange
AllnGaP Yellow
Green
Yellow Green

Benefits

- Compatible with automatic placement equipment
- Compatible with infrared reflow processes
- Packaged on 12mm tape, 7" reels (meets EIA-481-1 standard)
- Helps to eliminate mixed technology PC board processing



*ORDERING INFORMATION

597-5xxx-4xx

packaging option

02	20 pieces on tape
07	7" reel, 4000 pcs/reel

	AllnGaP Red -5004	Red -5112	Orange -5203	AllnGaP Orange -5213	AllnGaP Yellow -5223	Green -5312	Yellow Green -5412
ABSOLUTE MAXIMUM RATINGS ($T_A=25^\circ\text{C}$)							
Power Dissipation (mW)	81	57.5	70	81	81	70	70
Forward Current (mA)	30	25	25	30	30	25	25
Peak Current (mA)	100	60	60	100	100	60	60
<i>Pulse width = 10 μs</i>							
Operating Temperature ($^\circ\text{C}$)	-40/+85	-30/+85	-30/+85	-40/+85	-40/+85	-30/+85	-30/+85
Storage Temperature ($^\circ\text{C}$)	-40/+100	-40/+100	-40/+100	-40/+100	-40/+100	-40/+100	-40/+100
Soldering Temperature	240 $^\circ\text{C}$, 5 sec. max						

Solder Adherence per MIL-STD-202E, Method 208C

		AllnGaP Red -5004	Red -5112	Orange -5203	AllnGaP Orange -5213	AllnGaP Yellow -5223	Green -5312	Yellow Green -5412
OPERATING CHARACTERISTICS ($T_A=25^\circ\text{C}$)								
Luminous Intensity (mcd)	Min.	16	7	2	16	16	3.8	7
	Typical	50	11.7	3.4	65	65	6.4	11.7
	$I_F=20\text{mA}$							
Peak Wavelength (nm)	Typical	630	660	605	609	592	560	570
	λ_{Peak}							
Viewing Angle ($2\Theta_{1/2}$)	Typical	152 $^\circ$	152 $^\circ$	152 $^\circ$	152 $^\circ$	152 $^\circ$	152 $^\circ$	152 $^\circ$
Forward Voltage (V)	Typical	1.9	1.7	2.2	1.9	1.9	2.1	2.1
	Max.	2.4	2.3	2.8	2.4	2.4	2.8	2.8
	$I_F=20\text{mA}$							
Reverse Current (μA)	Max	100	100*	100*	100	100	100*	100*
	$(V_R = 5\text{V}) \quad * (V_R = 4\text{V})$							

$\Theta_{1/2}$ is the off axis angle at which the luminous intensity is half the axial luminous intensity

X-ON Electronics

Largest Supplier of Electrical and Electronic Components

Click to view similar products for [Standard LEDs - SMD category](#):

Click to view products by [Dialight manufacturer](#):

Other Similar products are found below :

[LTST-C19GD2WT](#) [LTST-N683GBEW](#) [597-3006-607F](#) [597-3403-607F](#) [LTW-K140SZR40](#) [LTW-M140ZVS](#) [598-8110-100F](#) [598-8170-100F](#)
[598-8610-202F](#) [7012X7](#) [AAAF5060QBFSEEZGS](#) [12-22SURSYGC/S530-A3/E2/TR8](#) [1383SURT/S530-A3/TR1\(R\)](#) [APT1608QGW](#)
[EASV1803BA0](#) [HT-F104TW-5860](#) [SML310BATT86](#) [SML-512VWT86A](#) [SML-LX0606SISUGC/A](#) [SML-LXL1307SRC-TR](#) [SML-](#)
[LXR851SIUPGUBC](#) [LT1ED53A](#) [17-21/G6C-FM1N2B/3T](#) [FAT801-S](#) [SSL-LXA227IC-TR31A](#) [AM27ZGC03](#) [APB3025SGNC](#)
[APHK1608VGCA](#) [APT2012QGW](#) [CLMVC-FKA-CA1E1L81BB7C3C3](#) [CLYBA-FKA-CFHHL9BBB7A363](#) [CMD11504UR](#) [LTW-](#)
[020ZDCG](#) [LTW-21TS5](#) [LTW-K140SZR30](#) [HSMY-C177](#) [HT-121UYG-4739](#) [UYGT801-S](#) [KVH1C100MF6R](#) [42-21SYGC/S530-E1/TR8](#)
[YGFR411-H](#) [597-2311-402F](#) [5973212407NF](#) [597-3302-607F](#) [597-5202-407F](#) [598-8330-117F](#) [SAW8WA2A-L35M40-CA](#) [SML013WBDW1](#)
[SML522BUWT86](#) [SML-LX0402IC-TR](#)