

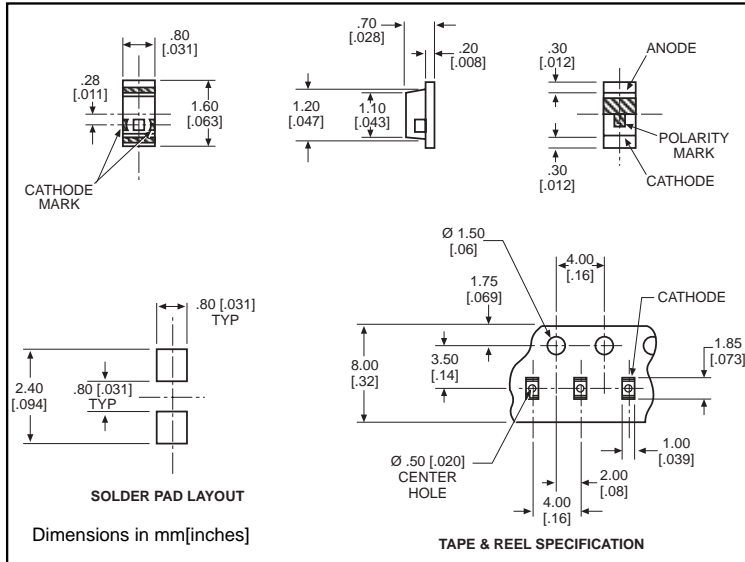
**microLED**®

**NEW**

**Dialight**

**Surface Mount LED  
0603 Type Package**

597-5004-4xx  
597-5x12-4xx  
597-52x3-4xx



**PART NO.\***

597-5004-4xx  
597-5112-4xx  
597-5203-4xx  
597-5213-4xx  
597-5223-4xx  
597-5312-4xx  
597-5412-4xx

**COLOR**

AllnGaP Red  
Red  
Orange  
AllnGaP Orange  
AllnGaP Yellow  
Green  
Yellow

**Benefits**

- Compatible with automatic placement equipment
- Compatible with infrared reflow processes
- Packaged on 12mm tape, 7" reels (meets EIA-481-1 standard)
- Helps to eliminate mixed technology PC board processing

**\*ORDERING INFORMATION**

**597-5xxx-4xx**

packaging option  $\uparrow$

02	20 pieces on tape
07	7" reel, 4000 pcs/reel

	AllnGaP Red	Red	Orange	AllnGaP Orange	AllnGaP Yellow	Green	Yellow
<b>ABSOLUTE MAXIMUM RATINGS</b> ( $T_A=25^\circ\text{C}$ )	<b>-5004</b>	<b>-5112</b>	<b>-5203</b>	<b>-5213</b>	<b>-5223</b>	<b>-5312</b>	<b>-5412</b>
Power Dissipation (mW)	81	57.5	70	81	81	70	70
Forward Current (mA)	30	25	25	30	30	25	25
Peak Current (mA)	100	60	60	100	100	60	60
<i>Pulse width = 10 <math>\mu\text{s}</math></i>							
Operating Temperature ( $^\circ\text{C}$ )	-40/+85	-30/+85	-30/+85	-40/+85	-40/+85	-30/+85	-30/+85
Storage Temperature ( $^\circ\text{C}$ )	-40/+100	-40/+100	-40/+100	-40/+100	-40/+100	-40/+100	-40/+100
Soldering Temperature	240 $^\circ\text{C}$ , 5 sec. max						

*Solder Adherence per MIL-STD-202E, Method 208C*

	AllnGaP Red	Red	Orange	AllnGaP Orange	AllnGaP Yellow	Green	Yellow
<b>OPERATING CHARACTERISTICS</b> ( $T_A=25^\circ\text{C}$ )	<b>-5004</b>	<b>-5112</b>	<b>-5203</b>	<b>-5213</b>	<b>-5223</b>	<b>-5312</b>	<b>-5412</b>
Luminous Intensity (mcd)	Min. 16	7	2	16	16	3.8	7
$I_F=20\text{mA}$	Typical 50	11.7	3.4	65	65	6.4	11.7
Peak Wavelength (nm)	Typical 630	660	605	609	592	560	570
$\lambda$ Peak							
Viewing Angle ( $2\theta_{1/2}$ )	Typical 152 $^\circ$	152 $^\circ$	152 $^\circ$	152 $^\circ$	152 $^\circ$	152 $^\circ$	152 $^\circ$
Forward Voltage (V)	Typical 1.9	1.7	2.2	1.9	1.9	2.1	2.1
$I_F=20\text{mA}$	Max. 2.4	2.3	2.8	2.4	2.4	2.8	2.8
Reverse Current ( $\mu\text{A}$ )	Max 100	100*	100*	100	100	100*	100*
( $V_R = 5\text{V}$ ) * ( $V_R = 4\text{V}$ )							

$\theta_{1/2}$  is the off axis angle at which the luminous intensity is half the axial luminous intensity

## X-ON Electronics

Largest Supplier of Electrical and Electronic Components

*Click to view similar products for [Standard LEDs - SMD category](#):*

*Click to view products by [Dialight manufacturer](#):*

Other Similar products are found below :

[LTST-C190KYKT](#) [LTST-C19GD2WT](#) [LTST-N683GBEW](#) [LTW-170ZDC](#) [598-8110-100F](#) [598-8170-100F](#) [598-8610-202F](#) [67-22VRVGC/TR8](#) [AAAF5060QBFSEEZGS](#) [HLMP-6305-L0011](#) [APT1608QGW](#) [15-21UYC/S530-A3/TR8](#) [EAST2012YA0](#) [EASV1803BA0](#) [LG M67K-H1J2-24-0-2-R18-Z](#) [LS A676-P2S1-1](#) [SML310BATT86](#) [SML-LX0606SISUGC/A](#) [SML-LXL1307SRC-TR](#) [SML-LXR851SIUPGUBC](#) [LT1ED53A](#) [FAT801-S](#) [AM27ZGC03](#) [APB3025SGNC](#) [APFA3010SURKCGKQBDC](#) [APHK1608VGCA](#) [APT2012QGW](#) [LTST-C250KGKT](#) [LTW-010DCG](#) [LTW-020ZDCG](#) [LTW-21TS5](#) [LTW-220DS5](#) [LY L29K-H1J2-26](#) [JANTXM19500/521-02](#) [UYGT801-S](#) [42-21UYC/S530-A3/TR8](#) [LO T67F-V1AB-24-1](#) [YGFR411-H](#) [598-8330-117F](#) [SML-LX0402IC-TR](#) [CMDA20AYAA7D1S](#) [CMDA16AYDR7A1X](#) [598-8040-100F](#) [598-8070-100F](#) [598-8140-100F](#) [598-8610-200F](#) [EAST2012GA0](#) [EAPL3527GA5](#) [EASV3020YGA0](#) [EAST1608RGBAO](#)