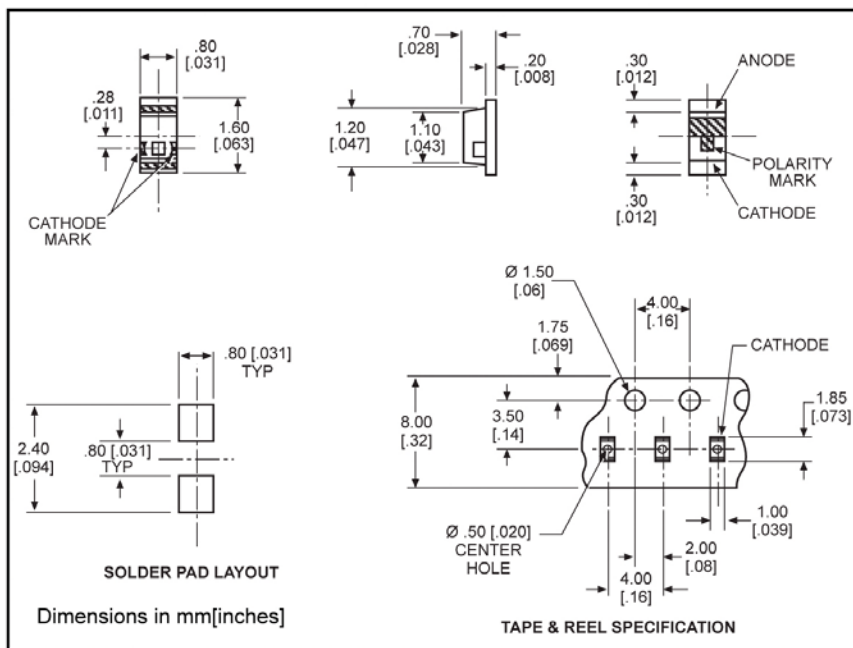


**Surface Mount LED
0603 Type Package**

597-5004-4xx
597-5x12-4xx
597-52x3-4xx



PART NO.*

597-5004-4xx
597-5112-4xx
597-5203-4xx
597-5213-4xx
597-5223-4xx
597-5312-4xx
597-5412-4xx

COLOR

AllnGaP Red
Red
Orange
AllnGaP Orange
AllnGaP Yellow
Green
Yellow Green

Benefits

- Compatible with automatic placement equipment
- Compatible with infrared reflow processes
- Packaged on 12mm tape, 7" reels (meets EIA-481-1 standard)
- Helps to eliminate mixed technology PC board processing

***ORDERING INFORMATION**

597-5xxx-4xx

packaging option

02	20 pieces on tape
07	7" reel, 4000 pcs/reel

	AllnGaP Red -5004	Red -5112	Orange -5203	AllnGaP Orange -5213	AllnGaP Yellow -5223	Green -5312	Yellow Green -5412
ABSOLUTE MAXIMUM RATINGS (T _A =25°C)							
Power Dissipation (mW)	81	57.5	70	81	81	70	70
Forward Current (mA)	30	25	25	30	30	25	25
Peak Current (mA)	100	60	60	100	100	60	60
<i>Pulse width = 10 μs</i>							
Operating Temperature (°C)	-40/+85	-30/+85	-30/+85	-40/+85	-40/+85	-30/+85	-30/+85
Storage Temperature (°C)	-40/+100	-40/+100	-40/+100	-40/+100	-40/+100	-40/+100	-40/+100
Soldering Temperature	240°C, 5 sec. max						

Solder Adherence per MIL-STD-202E, Method 208C

		AllnGaP Red -5004	Red -5112	Orange -5203	AllnGaP Orange -5213	AllnGaP Yellow -5223	Green -5312	Yellow Green -5412
OPERATING CHARACTERISTICS (T _A =25°C)								
Luminous Intensity (mcd)	Min.	16	7	2	16	16	3.8	7
	Typical	50	11.7	3.4	65	65	6.4	11.7
	<i>I_F=20mA</i>							
Peak Wavelength (nm)	Typical	630	660	605	609	592	560	570
	<i>λ Peak</i>							
Viewing Angle (2Θ 1/2)	Typical	152°	152°	152°	152°	152°	152°	152°
Forward Voltage (V)	Typical	1.9	1.7	2.2	1.9	1.9	2.1	2.1
	Max.	2.4	2.3	2.8	2.4	2.4	2.8	2.8
	<i>I_F=20mA</i>							
Reverse Current (μA)	Max	100	100*	100*	100	100	100*	100*
	<i>(V_R = 5V) * (V_R = 4V)</i>							

Θ 1/2 is the off axis angle at which the luminous intensity is half the axial luminous intensity

X-ON Electronics

Largest Supplier of Electrical and Electronic Components

Click to view similar products for [Standard LEDs - SMD category](#):

Click to view products by [Dialight manufacturer](#):

Other Similar products are found below :

[LTST-C190KYKT](#) [LTST-C19GD2WT](#) [LTST-N683GBEW](#) [LTW-170ZDC](#) [598-8110-100F](#) [598-8170-100F](#) [598-8610-202F](#) [67-22VRVGC/TR8](#) [AAAF5060QBFSEEZGS](#) [HLMA-QG00-S0021](#) [HLMP-6305-L0011](#) [ALMD-LB36-SV002](#) [APT1608QGW](#) [15-21UYC/S530-A3/TR8](#) [EAST2012YA0](#) [EASV1803BA0](#) [LG M67K-H1J2-24-0-2-R18-Z](#) [LS A676-P2S1-1](#) [SML310BATT86](#) [SML-LX0606SISUGC/A](#) [SML-LXL1307SRC-TR](#) [SML-LXR851SIUPGUBC](#) [LT1ED53A](#) [FAT801-S](#) [AM27ZGC03](#) [APB3025SGNC](#) [APFA3010SURKCGKQBDC](#) [APHK1608VGCA](#) [APT2012QGW](#) [LTST-C250KGKT](#) [LTW-010DCG](#) [LTW-020ZDCG](#) [LTW-21TS5](#) [LTW-220DS5](#) [LY L29K-H1J2-26](#) [UYGT801-S](#) [42-21UYC/S530-A3/TR8](#) [LO T67F-V1AB-24-1](#) [YGFR411-H](#) [598-8330-117F](#) [SML-LX0402IC-TR](#) [CMDA20AYAA7D1S](#) [CMDA16AYDR7A1X](#) [598-8040-100F](#) [598-8070-100F](#) [598-8140-100F](#) [598-8610-200F](#) [EAST2012GA0](#) [EAPL3527GA5](#) [EASV3020YGA0](#)