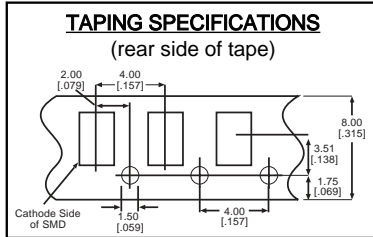
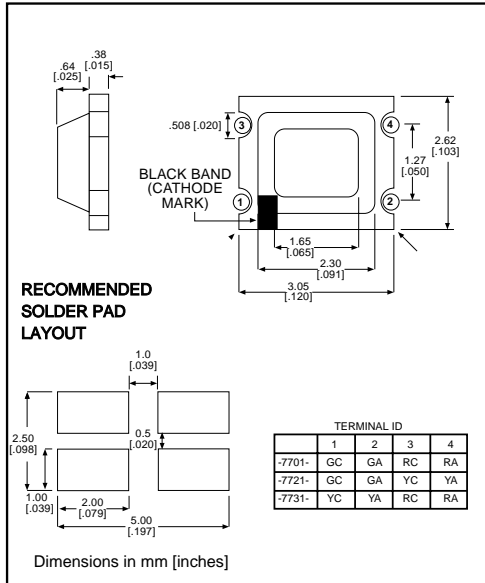




Surface Mount LED Bi-Color

Dialight

597-77x1-1xx



Features

- Compatible with automatic placement equipment
- Compatible with infrared reflow processes
- Packaged on 8mm tape, 7" reels (meets EIA-481-1 standard)
- Helps to eliminate mixed technology PC board processing
- Compatible with Dialight's Optopipe™ Series light pipes

PART NO.* COLOR

- 597-7701-1xx Red/Green
- 597-7721-1xx Yellow/Green
- 597-7731-1xx Red/Yellow

*ORDERING INFORMATION

597-77x1-1xx

packaging option

02	20 pieces on tape
07	7" reel, 3000 pcs/reel

ABSOLUTE MAXIMUM RATINGS (T_A=25°C)

	Red/Green -7701	Yellow/Green -7721	Red/Yellow -7731
Power Dissipation (mW)	65/65	70/65	65/70
Forward Current (mA)	25	25	25
Derating (mA/°C)	.33	.33	.33
Peak Current (mA) <i>Pulse width = 1 μs</i>	100	100	100
Operating Temperature (°C)	-25/+75	-25/+75	-25/+75
Storage Temperature (°C)	-30/+85	-30/+85	-30/+85
Soldering Profile	240°C to 260°C for 10 seconds		

Solder Adherence per MIL-STD-202E, Method 208C

OPERATING CHARACTERISTICS (T_A=25°C)

		Red/Green -7701	Yellow/Green -7721	Red/Yellow -7731
Luminous Intensity (mcd)	Min.	1.6/6	3/6	1.6/3
	Typical	4/12	8/12	4/8
Peak Wavelength (nm)	Typical	630/565	585/565	630/585
Viewing Angle (2θ _{1/2})	Typical	170°	170°	170°
Forward Voltage (V)	Typical	2/2	2.1/2	2/2.1
	Max.	2.6/2.6	2.8/2.6	2.6/2.8
Reverse Voltage (V), I _R =10μA	Min.	4	4	4

θ_{1/2} is the off axis angle at which the luminous intensity is half the axial luminous intensity

X-ON Electronics

Largest Supplier of Electrical and Electronic Components

Click to view similar products for [Standard LEDs - SMD category](#):

Click to view products by [Dialight manufacturer](#):

Other Similar products are found below :

[LTST-C190KYKT](#) [LTST-C19GD2WT](#) [LTST-N683GBEW](#) [LTW-170ZDC](#) [598-8110-100F](#) [598-8170-100F](#) [598-8610-202F](#) [67-22VRVGC/TR8](#) [AAAF5060QBFSEEZGS](#) [HLMP-6305-L0011](#) [APT1608QGW](#) [15-21UYC/S530-A3/TR8](#) [EAST2012YA0](#) [EASV1803BA0](#) [LG M67K-H1J2-24-0-2-R18-Z](#) [LS A676-P2S1-1](#) [SML310BATT86](#) [SML-LX0606SISUGC/A](#) [SML-LXL1307SRC-TR](#) [SML-LXR851SIUPGUBC](#) [LT1ED53A](#) [FAT801-S](#) [AM27ZGC03](#) [APB3025SGNC](#) [APFA3010SURKCGKQBDC](#) [APHK1608VGCA](#) [APT2012QGW](#) [LTST-C250KGKT](#) [LTW-010DCG](#) [LTW-020ZDCG](#) [LTW-21TS5](#) [LTW-220DS5](#) [LY L29K-H1J2-26](#) [JANTXM19500/521-02](#) [UYGT801-S](#) [42-21UYC/S530-A3/TR8](#) [LO T67F-V1AB-24-1](#) [YGFR411-H](#) [598-8330-117F](#) [SML-LX0402IC-TR](#) [CMDA20AYAA7D1S](#) [CMDA16AYDR7A1X](#) [598-8040-100F](#) [598-8070-100F](#) [598-8140-100F](#) [598-8610-200F](#) [EAST2012GA0](#) [EAPL3527GA5](#) [SML-LXL1209SYC/ATR](#) [EASV3020YGA0](#)