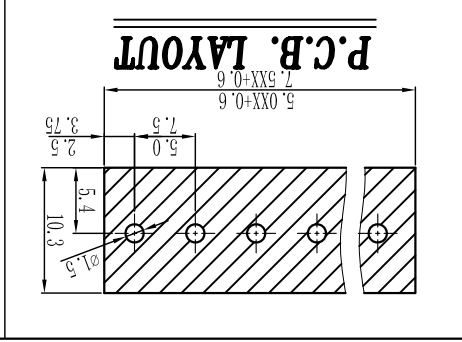


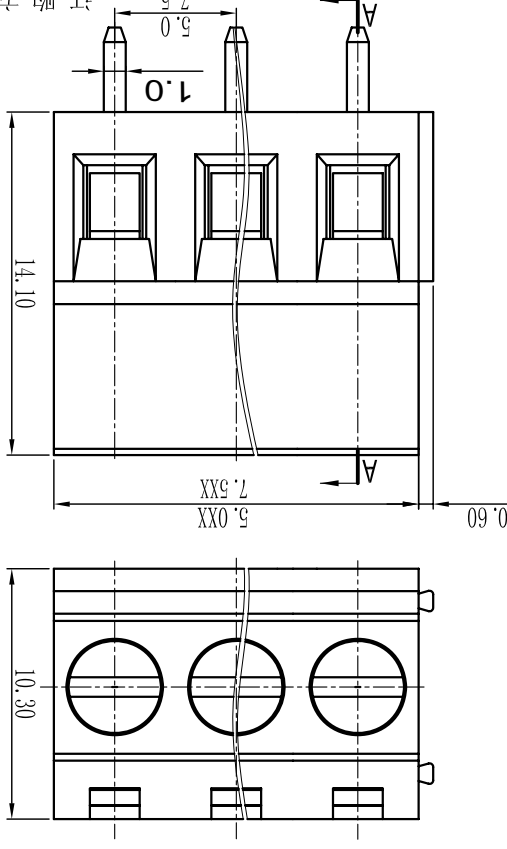
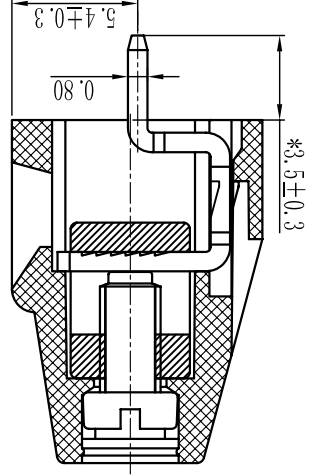


Cixi Dibo Electronics Co., LTD

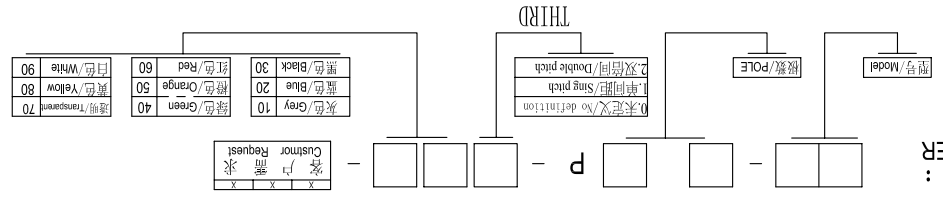
产品规格书 THE SPEC SHEET



SECTION A-A



订购方式：
HOW TO ORDER:



说明/Transmitt	颜色/Color	数量/Quantity
透明/Transparent	灰色/Grey	10
透明/Transparent	绿色/Green	40
黄色/Yellow	黄色/Orange	50
黄色/Yellow	红色/Red	60
白色/White	白色/White	90

电气性能/Electrical
参考标准/Standard: UL IEC
额定电压/Rated voltage: 300V 250V
额定电流/Rated current: 10A 18A
接触电阻/Contact resistance: 20m Ω
使用线径/Wire range: 22-12AWG 2.5mm 2
耐压/Withstanding voltage: AC2000V/1MIn
绝缘电阻/Insulation resistance: 500M Ω /DC500V
机械性能/Mechanical
温度范围/Temp.Range: -40 $^{\circ}$ C~+105 $^{\circ}$ C
扭矩/Torque: 0.4Nm(3.541lb \cdot in)
剥线长度/Strip length: 6-7mm
尺寸/Dimensions
间距/Pitch: 5.0mm,7.5mm
极数/Poles: 2P-24P
材质及电镀/Material
塑件/Housing: PA66, UL94V-0
螺丝/Screws: M2.5, steel Zinc plated
方块/Cage: Brass, Ni plated
焊脚/Pin header: Brass, Snle plated

linear dimension(Tolerances Standard GB/T 14486-2008)	tolerance	variable range	tolerance
≡	±0.1	6 to 6	±0.1
≡	±0.14	6 to 10	±0.14
≡	±0.19	10 to 18	±0.19
≡	±0.25	18 to 30	±0.25
≡	±0.32	30 to 50	±0.32
≡	±0.43	50 to 80	±0.43
≡	±0.57	80 to 120	±0.57
≡	±0.72	120 to 160	±0.72
≡	±0.88	160 to 200	±0.88
≡	±1.05	200 to 250	±1.05
≡	±1.25	250 to all	±1.25
≡	0.5	5 to 5	0.025
≡	0.025	5 to 5	0.06
≡	0.06	5 to 30	0.12
≡	0.12	30 to 120	0.4

单位名称/UNITS	mm	尺寸/SIZE	A4	比例/SCALE	比例	名称/NAME		DB128V-5.0/7.5
Cixi Dibo Electronics Co., LTD								
第一视角/THIRD ANGLE PROJECTION								

X-ON Electronics

Largest Supplier of Electrical and Electronic Components

Click to view similar products for [Fixed Terminal Blocks](#) category:

Click to view products by [DIBO](#) manufacturer:

Other Similar products are found below :

[00175550202](#) [MBE-1512](#) [MBE-1520](#) [MBE-154](#) [MBE-156](#) [MBES-1510](#) [MBES-153](#) [MBES-156](#) [MH-2512](#) [MHE-132](#) [MHE-133](#) [MHE-163](#)
[MI-254 \(35\)](#) [MI-272](#) [8739](#) [880507](#) [880508](#) [MPT-275](#) [1546551-6](#) [ELM023100](#) [ELM10110G](#) [ELVD12100](#) [BA311TU](#) [BA411SU](#) [MV-152](#)
[MV-253/NCNOC](#) [MV-254-D](#) [MV-255](#) [MV-462](#) [MV-472](#) [MV-493](#) [MVE-252](#) [MVE-253](#) [MVE-258](#) [MVE-273](#) [MVEB-153](#) [1700096](#)
[1702246](#) [1705142](#) [1712417](#) [1713020](#) [1713088](#) [1776118-2](#) [1790852](#) [1-796689-8](#) [1-796692-6](#) [1800001](#) [1800114](#) [1823215](#) [1838462](#)