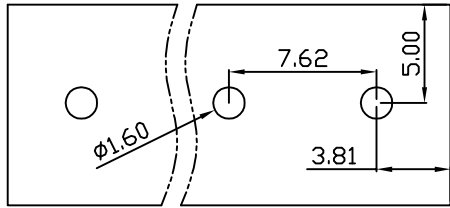
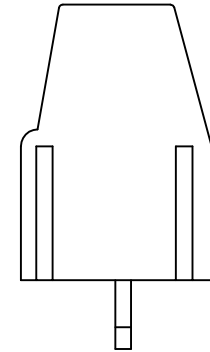
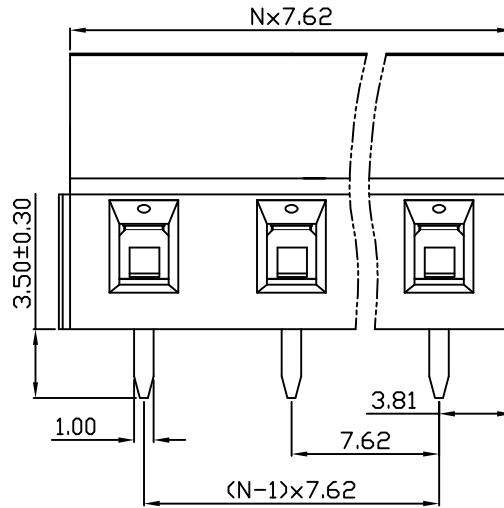
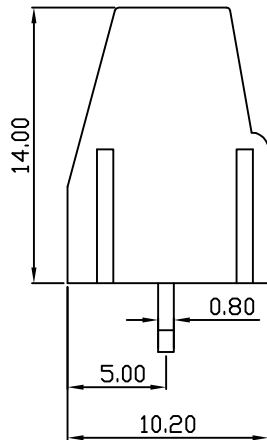
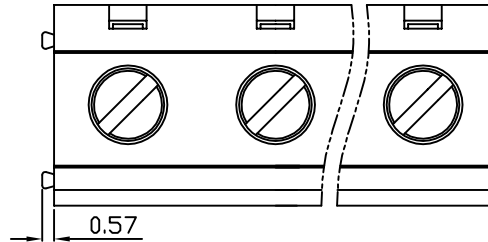


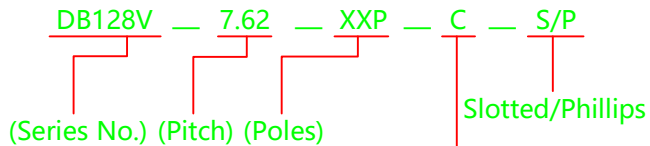
| linear dimension(Tolerances Standard GB/T 14486-2008) |       |              |               |               |                |                 |             | —     | $\nabla$       | $\perp$     |
|---|-------|--------------|---------------|---------------|----------------|-----------------|-------------|-------|----------------|-------------|
| variable range  | to 6  | over 6 to 10 | over 10 to 30 | over 30 to 60 | over 60 to 100 | over 100 to 160 | over 160 to | to 10 | over 10 to 100 | over 100 to |
| tolerance   | ±0.20 | ±0.30        | ±0.50         | ±0.70         | ±1.00          | ±1.30           | ±1.60       | 0.10  | 0.30           | 0.60        |



PCB Layout



| UL/CUL 技术参数 |                                 | UL/CUL Technical Data |     |      |
|-------------|---------------------------------|-----------------------|-----|------|
| 等级          | Use Group                       | B                     | C   | D    |
| 额定电压        | Rated Voltage [V]               | 300                   | -   | 300  |
| 额定电流        | Rated Current [A]               | 16                    | -   | 10   |
| 接线范围        | Wire Range                      | 22-12                 |     |      |
| 单/多芯线       | Solid/Stranded [AWG]            |                       |     |      |
| 耐电压         | Withstanding Voltage            | 1600V/1Min            |     |      |
| IEC 技术参数    |                                 | IEC Technical Data    |     |      |
| 过电压类别       | Overvoltage Category            | III                   | III | II   |
| 污染等级        | Contamination Class             | 3                     | 2   | 2    |
| 额定电压        | Rated Voltage [V]               | 450                   | 630 | 1000 |
| 额定电流        | Rated Current [A]               | 24                    | 24  | 24   |
| 额定冲击电压      | Impulse withstand voltagea [KV] | 6                     | 6   | 6    |
| 导线截面积       | Conductor cross section         | 2.5                   |     |      |
| 硬质/柔性导线     | Solid/flexible [mm²]            |                       |     |      |
| 材料          |                                 | Material              |     |      |
| 绝缘材料        | Insulation Material             | PA66                  |     |      |
| 阻燃等级        | Flammability                    | UL94V-0               |     |      |
| 导体材料        | Contact Material                | 铜合金 Copper alloy      |     |      |
| 导体表面镀层      | Contactive Coating              | 镀锡 Sn Plated          |     |      |
| 一般参数        |                                 | Other Data            |     |      |
| 间距          | Pitch [mm]                      | 7.62                  |     |      |
| 极数          | Poles [P]                       | 02~24                 |     |      |
| 剥线长度        | Stripping Length [mm]           | 6-7                   |     |      |
| 螺丝          | Screw/扭矩 Torque(Max) [N.m]      | M2.5/0.4              |     |      |
| 工作温度        | Operating temperatur [°C]       | -40~+105              |     |      |
| 引针尺寸        | Pin Dimensions [mm]             | 0.80x1.00             |     |      |
| PCB板孔径      | PCB Hole Diameter [mm]          | 1.60                  |     |      |



(Color):GN:(Green), BK:(Black), BU:(Blue), RD:(Red), GY:(Gray)  
OG:(Orange), WT:(White), YL:(Yellow), CR:(Clear)

|       |            |            |
|-------|------------|------------|
| APPD: | JTing Chen | 2022.10.27 |
| CHKD: | Duck Mao   | 2022.10.27 |
| DRFT: | Steven Lu  | 2022.10.27 |

**DORABO** 宁波地博电气有限公司  
Ningbo Dorabo Electric CO., Ltd

NAME: DB128V-7.62-XXP-C-S

|                        |            |           |     |      |
|------------------------|------------|-----------|-----|------|
| $\oplus$               | SIZE: A4   | mm (inch) | REV | T0-1 |
| TYPE: CUSTOMER_DRAWING | SCALE: 1:1 | SHEET     | 1/1 |      |

## X-ON Electronics

Largest Supplier of Electrical and Electronic Components

*Click to view similar products for [Fixed Terminal Blocks](#) category:*

*Click to view products by [DIBO](#) manufacturer:*

Other Similar products are found below :

[MBE-1512](#) [MBE-1520](#) [MBE-154](#) [MBE-156](#) [MBES-156](#) [MH-2512](#) [MHE-132](#) [MHE-163](#) [MI-254 \(35\)](#) [MI-272](#) [MPT-275](#) [ELM10110G](#)  
[BA311TU](#) [BA411SU](#) [MV-253/NCNOC](#) [MV-254-D](#) [MV-255](#) [MV-493](#) [MVE-252](#) [MVE-253](#) [MVE-273](#) [MVEB-153](#) [1700096](#) [1705142](#)  
[1712417](#) [1713088](#) [1745195](#) [1760594](#) [1-796689-8](#) [1-796692-6](#) [1800114](#) [20020314-C121B01LF](#) [20020316-G041B01LF](#) [KP03215000J0G](#)  
[KP04215000J0G](#) [S451](#) [29.007](#) [29.116](#) [30.103](#) [30.106](#) [30.503](#) [30.608](#) [30.755](#) [30.756](#) [30.853](#) [9872-0-00-15-00-00-33-0](#) [996750](#) [1706303](#)  
[1710052](#) [1712418](#)