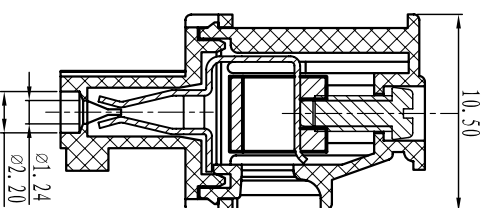
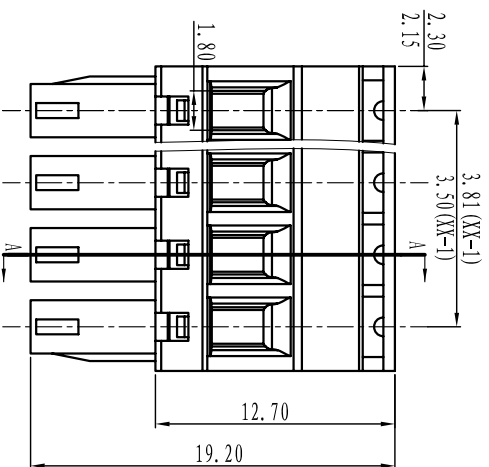
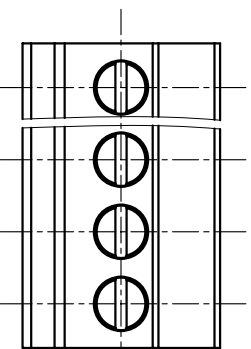


DORABO[®] Cixi Dibo Electronics Co.,LTD

产品规格书
product specification



SECTION A-A



电气性能/Electrical

参考标准/Standard: UL IEC
 额定电压/Rated voltage: 300V 250V
 额定电流/Rated current: 8A 10A
 接触电阻/Contact resistance: 20mΩ
 使用线径/Wire range: 28-16AWG 1.5mm²
 耐电压/Withstanding voltage: AC2000V/1Min
 绝缘电阻/Insulation resistance: 500MΩ/DC500V

机械性能/Mechanical

温度范围/Temp.Range: -40° C~+105° C
 扭矩/Torque: 0.2Nm (1.71lb`in)
 剥线长度/Strip length: 6-7mm

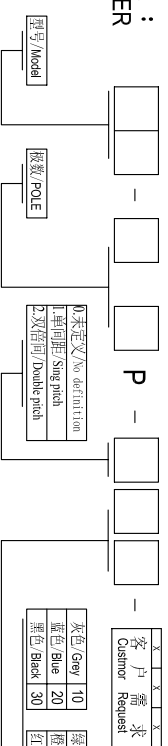
尺寸/Dimensions

间距/Pitch: 3.81mm, 3.50mm
 极数/Poles: 2P-24P

材料及电镀/Material

塑件/Housing: PA66, UL94V-0
 螺丝/Screws: M2, Steel Zinc plated
 方块/Wire guard: Brass, Ni plated
 夹子/Clamp: Phosphor bronze, Ni plated

订购方式: HOW TO ORDER



TOLERANCES EXCEPT AS NOTED

	linear dimension	fillet	chamfer	短角 short angle	短边 sid	倒角 chamfer	公差 tolerance
variable range	6 to 30 to 120 to 480	all to 6	6 to 10 to 50 to 120	10 to 50 to 120	all to 5 to 30 to 120	6 to 10 to 50 to 120	±0.1 to ±0.2 ±0.3 to ±0.5 ±0.9 to ±0.2 ±0.5 to ±1 1° to 30° 20° to 10°
tolerance	±0.1 to ±0.2 ±0.3 to ±0.5 ±0.9 to ±0.2 ±0.5 to ±1 1° to 30° 20° to 10°	±0.2 to ±0.5 ±1 to 0.5 0.025 to 0.06 0.12 to 0.4	±0.2 to ±0.5 ±1 to 0.5 0.025 to 0.06 0.12 to 0.4	±0.2 to ±0.5 ±1 to 0.5 0.025 to 0.06 0.12 to 0.4	±0.2 to ±0.5 ±1 to 0.5 0.025 to 0.06 0.12 to 0.4	±0.2 to ±0.5 ±1 to 0.5 0.025 to 0.06 0.12 to 0.4	±0.1 to ±0.2 ±0.3 to ±0.5 ±0.9 to ±0.2 ±0.5 to ±1 1° to 30° 20° to 10°

单位/UNITS mm 尺寸/SIZE A4 比例/SCALE

名称/NAME DB2EKA-3.81-XXP



X-ON Electronics

Largest Supplier of Electrical and Electronic Components

Click to view similar products for [Pluggable Terminal Blocks](#) category:

Click to view products by [DIBO](#) manufacturer:

Other Similar products are found below :

[57.404.7553](#) [57.504.0053.7](#) [57.510.0053](#) [57.910.6153](#) [01.112.1453](#) [CTB932VE/6](#) [MC 1.5/ 6-ST-3.5 GY AU](#) [ET02015000J0G](#) [734-104](#) [734-302](#) [734-304](#) [8-141-P](#) [FKCT 2.5/ 3-ST KMGY](#) [860505](#) [860508](#) [860516](#) [860810](#) [861908](#) [GBPACX-12](#) [93.731.4953.0](#) [PV05-5,08-K](#) [PVP02-5,00](#) [PVP04-3,50](#) [PVS02-5,00](#) [1-1986160-3](#) [H-10](#) [ELFH09150](#) [ELFH16150](#) [ELFP03110](#) [ELFT06250](#) [ELFT07250](#) [ELVF09400](#) [ELVP03100](#) [ELXH03100](#) [ELXH071G0E](#) [ELXP041G0](#) [ELXT046G0](#) [1700101](#) [1700410](#) [1700425](#) [1703176](#) [1705229](#) [1710175](#) [1714537](#) [1717806](#) [1719600](#) [1729386](#) [1734692](#) [1734795](#) [1736036](#)