

REVISION RECORD			
REV	ECN	DESCRIPTION	DATE

NOTES1:
UL Standard

1. Rated voltage/current : 300V / 15A
2. Withstanding voltage : AC1600V/1Min.
3. Torque value : M2.5 , 3.54lb.in
4. Wire range : 28~12AWG

IEC Standard

1.	Pollution Degree	2
	Overvoltage Category	III
	Rate Impulse Voltage(KV)	4.0KV
	Rate Voltage(V)	400V
	Rate Current(A)	18A

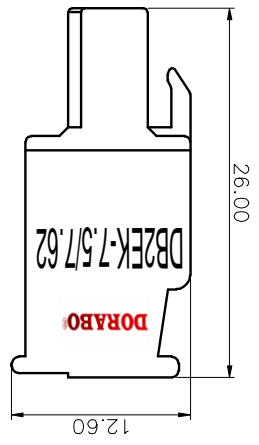
2. Torque value : M2.5 , 0.4N·m
3. Wire range : 2.5mm²

NOTES2:

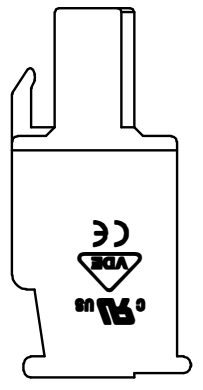
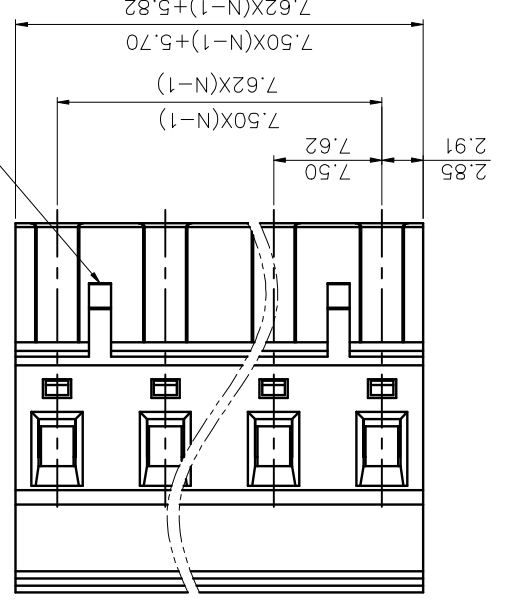
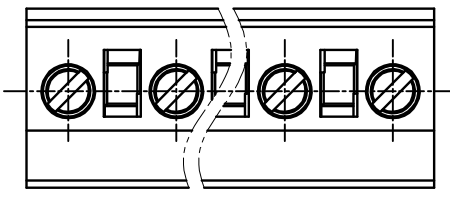
1. Dimension shall be interpreted per ASME Y14.5-2009
2. Pitch : 7.50/7.62mm, Poles : N=02~12P
3. Stripping length : 7~8mm
4. Operating temperature: -40°C~+105°C
5. Undimensioned tolerances:

Pitch range in mm	Normal dimension range in mm	Over	Under
6 to 10	Over 10	0.1/10	0.1/10
10 to 24	Over 10	0.15	0.15
30 to 60	Over 30	0.20	0.20
60 to 100	Over 60	0.30	0.30
100 to 150	Over 100	0.50	0.50
150 to 200	Over 150	0.70	0.70
200 to 250	Over 200	1.00	1.00
250 to 300	Over 250	1.50	1.50
300 to 400	Over 300	2.00	2.00

6. RoHS Compliance



02P: Clasp on the right from this view

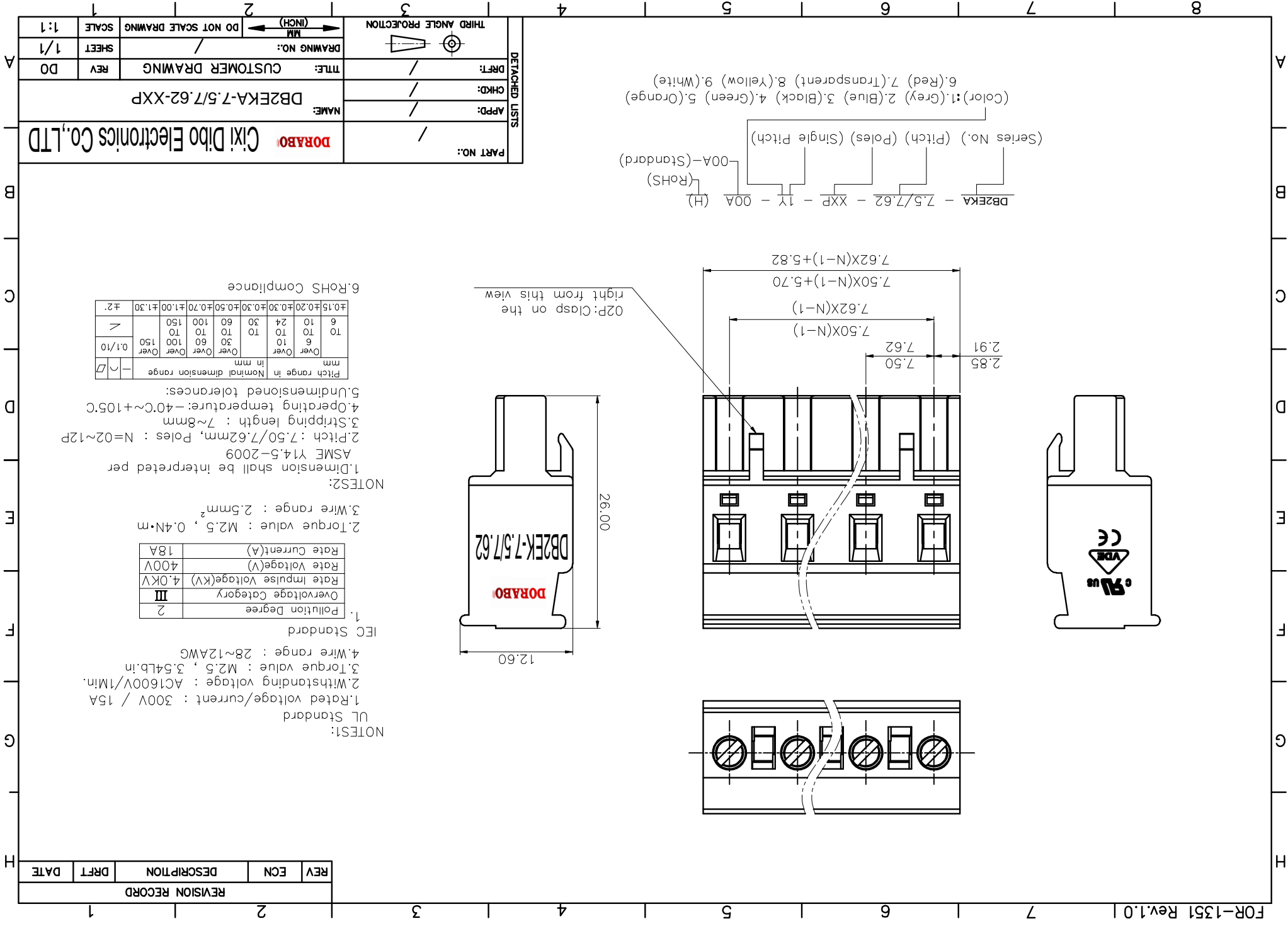


DBZEKA - 7.5/7.62 - XXP - 1X - 00A (H)
(RoHS)
00A-(Standard)
(Series No.) (Pitch) (Poles) (Single Pitch)

(Color): 1.(Grey) 2.(Blue) 3.(Black) 4.(Green) 5.(Orange) 6.(Red) 7.(Transparent) 8.(Yellow) 9.(White)

PART NO.:	/	
	DORABO	
NAME:	DBZEKA-7.5/7.62-XXP	
APPD:	/	
CHKD:	/	
DRAFT:	/	
TITLE:	CUSTOMER DRAWING	
REV:	DO	
SHEET:	1/1	
SCALE:	1:1	
THIRD ANGLE PROJECTION	MM	
DO NOT SCALE DRAWING	DO NOT SCALE DRAWING	

DETACHED LISTS



X-ON Electronics

Largest Supplier of Electrical and Electronic Components

Click to view similar products for [Pluggable Terminal Blocks](#) category:

Click to view products by [DIBO](#) manufacturer:

Other Similar products are found below :

[57.404.7553](#) [57.504.0053.7](#) [57.510.0053](#) [57.910.6153](#) [01.112.1453](#) [CTB932VE/6](#) [MC 1.5/ 6-ST-3.5 GY AU](#) [ET02015000J0G](#) [734-104](#) [734-302](#) [734-304](#) [8-141-P](#) [FKCT 2.5/ 3-ST KMGY](#) [860505](#) [860508](#) [860516](#) [860810](#) [861908](#) [GBPACX-12](#) [93.731.4953.0](#) [PV05-5,08-K](#) [PVP02-5,00](#) [PVP04-3,50](#) [PVS02-5,00](#) [1-1986160-3](#) [H-10](#) [ELFH09150](#) [ELFH16150](#) [ELFP03110](#) [ELFT06250](#) [ELFT07250](#) [ELVF09400](#) [ELVP03100](#) [ELXH03100](#) [ELXH071G0E](#) [ELXP041G0](#) [ELXT046G0](#) [1700101](#) [1700410](#) [1700425](#) [1703176](#) [1703243](#) [1705229](#) [1710175](#) [1714537](#) [1717806](#) [1719600](#) [1729386](#) [1734692](#) [1734795](#)