

| REVISION RECORD | | | |
|-----------------|-----|-------------|------|
| REV | ECN | DESCRIPTION | DATE |
| | | | |

NOTES1:
UL Standard

1. Rated voltage/current : 300V / 15A
2. Withstanding voltage : AC1600V/1Min.
3. Torque value : M2.5 , 3.54lb.in
4. Wire range : 28~12AWG

IEC Standard

| | | |
|----|--------------------------|-------|
| 1. | Pollution Degree | 2 |
| | Overvoltage Category | III |
| | Rate Impulse Voltage(KV) | 4.0KV |
| | Rate Voltage(V) | 400V |
| | Rate Current(A) | 18A |

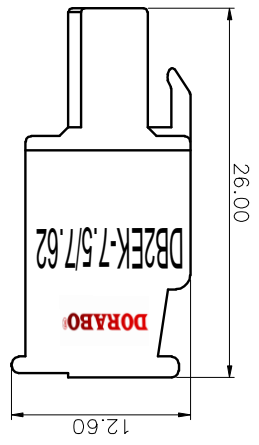
2. Torque value : M2.5 , 0.4N·m
3. Wire range : 2.5mm²

NOTES2:

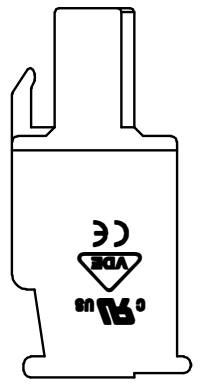
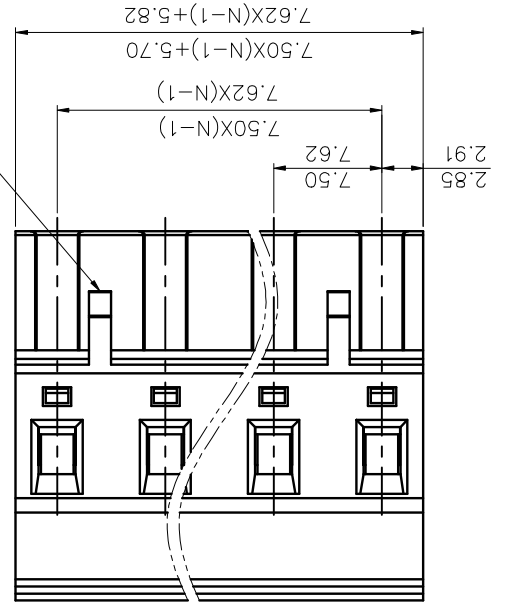
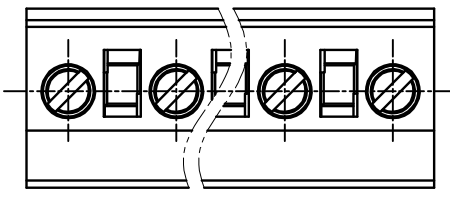
1. Dimension shall be interpreted per ASME Y14.5-2009
2. Pitch : 7.50/7.62mm, Poles : N=02~12P
3. Stripping length : 7~8mm
4. Operating temperature: -40°C~+105°C
5. Undimensioned tolerances:

| Pitch range in mm | Normal dimension range | in mm | Over | Under | ±2. |
|-------------------|------------------------|-------|------|-------|-----|
| 6 to 10 | Over | 10 | 0.1 | 0.10 | ±2. |
| 10 to 24 | Over | 10 | 0.1 | 0.10 | ±2. |
| 30 to 60 | Over | 10 | 0.1 | 0.10 | ±2. |
| 60 to 100 | Over | 10 | 0.1 | 0.10 | ±2. |
| 100 to 150 | Over | 10 | 0.1 | 0.10 | ±2. |
| 150 to 300 | Over | 10 | 0.1 | 0.10 | ±2. |
| 300 to 500 | Over | 10 | 0.1 | 0.10 | ±2. |
| 500 to 700 | Over | 10 | 0.1 | 0.10 | ±2. |
| 700 to 1000 | Over | 10 | 0.1 | 0.10 | ±2. |
| 1000 to 1500 | Over | 10 | 0.1 | 0.10 | ±2. |
| 1500 to 2000 | Over | 10 | 0.1 | 0.10 | ±2. |
| 2000 to 3000 | Over | 10 | 0.1 | 0.10 | ±2. |
| 3000 to 4000 | Over | 10 | 0.1 | 0.10 | ±2. |
| 4000 to 5000 | Over | 10 | 0.1 | 0.10 | ±2. |
| 5000 to 6000 | Over | 10 | 0.1 | 0.10 | ±2. |
| 6000 to 7000 | Over | 10 | 0.1 | 0.10 | ±2. |
| 7000 to 8000 | Over | 10 | 0.1 | 0.10 | ±2. |
| 8000 to 9000 | Over | 10 | 0.1 | 0.10 | ±2. |
| 9000 to 10000 | Over | 10 | 0.1 | 0.10 | ±2. |

6. RoHS Compliance



02P: Clasp on the right from this view

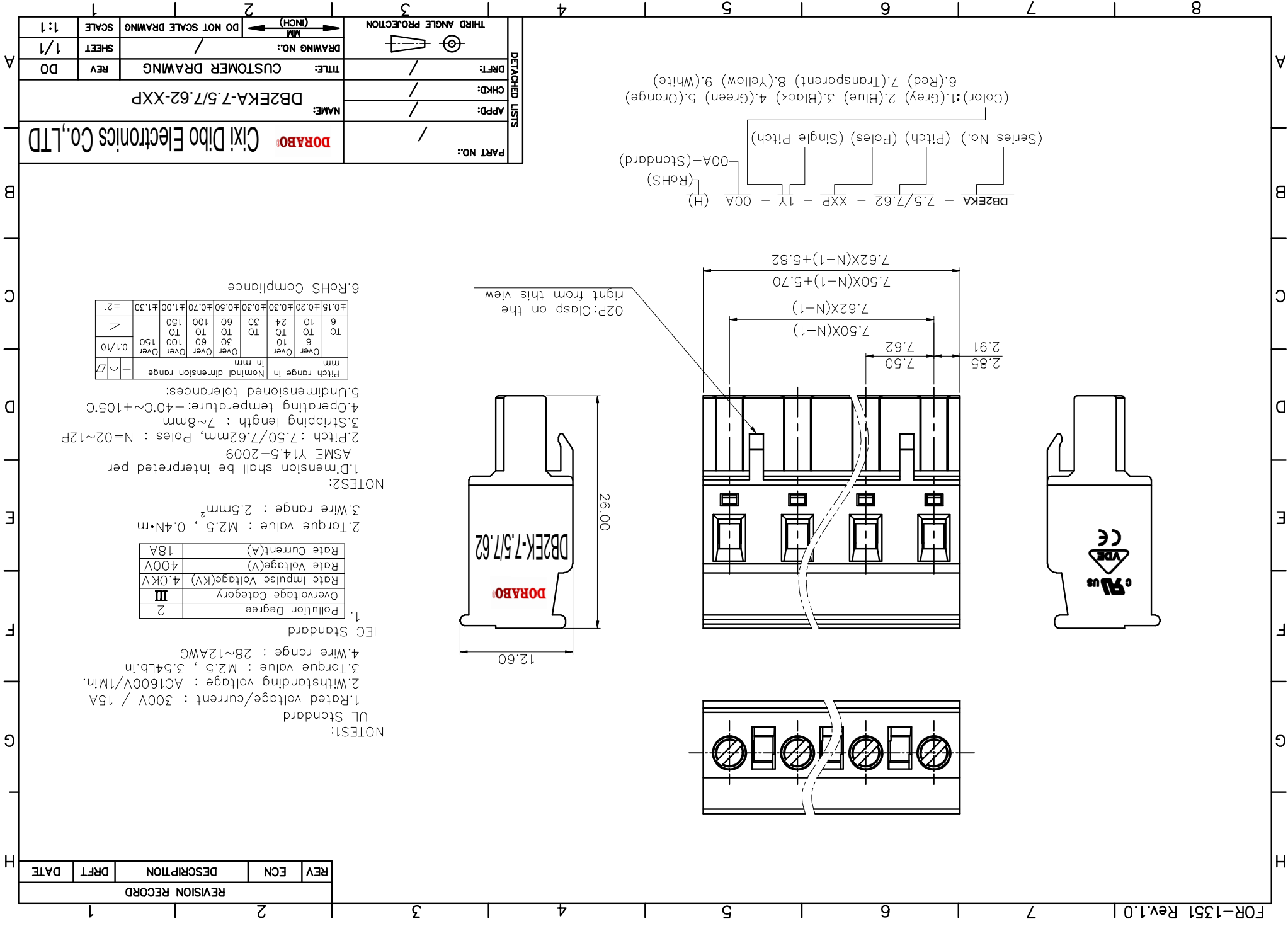


DBZEKA - 7.5/7.62 - XXP - 1X - 00A (H)
(RoHS)
00A-(Standard)
(Series No.) (Pitch) (Poles) (Single Pitch)

(Color): 1.(Grey) 2.(Blue) 3.(Black) 4.(Green) 5.(Orange) 6.(Red) 7.(Transparent) 8.(Yellow) 9.(White)

| | | |
|------------------------|----------------------|--|
| PART NO.: | / | |
| | / | |
| APPD: | / | |
| CHKD: | / | |
| DRAFT: | / | |
| NAME: | DBZEKA-7.5/7.62-XXP | |
| TITLE: | CUSTOMER DRAWING | |
| REV: | DO | |
| SHEET: | 1/1 | |
| SCALE: | 1:1 | |
| THIRD ANGLE PROJECTION | MM | |
| DO NOT SCALE DRAWING | DO NOT SCALE DRAWING | |

DETACHED LISTS



X-ON Electronics

Largest Supplier of Electrical and Electronic Components

Click to view similar products for [Pluggable Terminal Blocks](#) category:

Click to view products by [DIBO](#) manufacturer:

Other Similar products are found below :

[57.404.7553](#) [57.504.0053.7](#) [57.510.0053](#) [57.910.6153](#) [01.112.1453](#) [CTB932VE/6](#) [MC 1.5/ 6-ST-3.5 GY AU](#) [ET02015000J0G](#) [734-104](#) [734-302](#) [734-304](#) [8-141-P](#) [FKCT 2.5/ 3-ST KMGY](#) [860505](#) [860508](#) [860516](#) [860810](#) [861908](#) [GBPACX-12](#) [93.731.4953.0](#) [PV05-5,08-K](#) [PVP02-5,00](#) [PVP04-3,50](#) [PVS02-5,00](#) [1-1986160-3](#) [H-10](#) [ELFH09150](#) [ELFH16150](#) [ELFP03110](#) [ELFT06250](#) [ELFT07250](#) [ELVF09400](#) [ELVP03100](#) [ELXH03100](#) [ELXH071G0E](#) [ELXP041G0](#) [ELXT046G0](#) [1700101](#) [1700410](#) [1700425](#) [1703176](#) [1703243](#) [1705229](#) [1710175](#) [1714537](#) [1717806](#) [1719600](#) [1729386](#) [1734692](#) [1734795](#)