

REVISION RECORD			
REV	ECN	DESCRIPTION	DATE

NOTES1:
UL Standard

1. Rated voltage/current : 300V / 15A
2. Withstanding voltage : AC1600V/1Min.
3. Torque value : M2.5 , 3.54lb.in
4. Wire range : 28~12AWG

IEC Standard

1.	Pollution Degree	2
	Overvoltage Category	III
	Rate Impulse Voltage(KV)	4.0KV
	Rate Voltage(V)	400V
	Rate Current(A)	18A

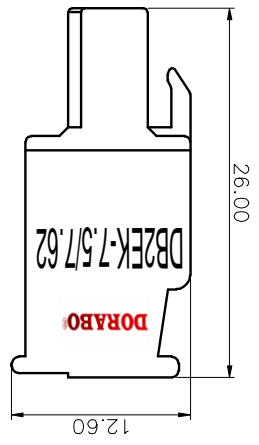
2. Torque value : M2.5 , 0.4N·m
3. Wire range : 2.5mm²

NOTES2:

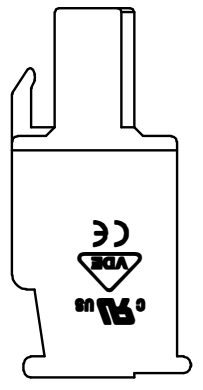
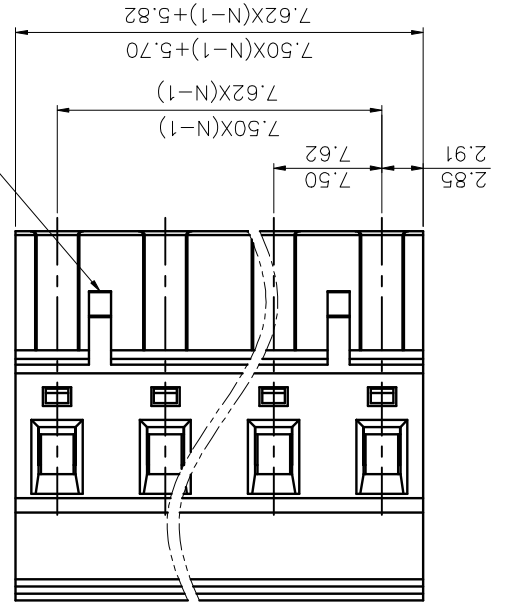
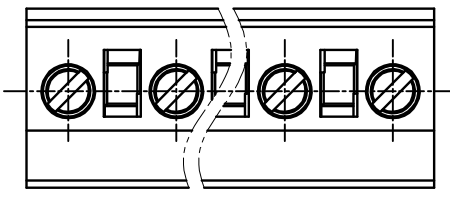
1. Dimension shall be interpreted per ASME Y14.5-2009
2. Pitch : 7.50/7.62mm, Poles : N=02~12P
3. Stripping length : 7~8mm
4. Operating temperature: -40°C~+105°C
5. Undimensioned tolerances:

Pitch range in mm	Normal dimension range	in mm	Over	Under
6 to 10	Over	10	0.1	0.10
10 to 24	Over	10	0.10	0.15
30 to 60	Over	30	0.15	0.20
60 to 100	Over	60	0.20	0.30
100 to 150	Over	100	0.30	0.50
150 to 300	Over	150	0.50	0.70
300 to 600	Over	300	0.70	1.00
600 to 1000	Over	600	1.00	1.50
1000 to 1500	Over	1000	1.50	2.00

6. RoHS Compliance



02P: Clasp on the right from this view

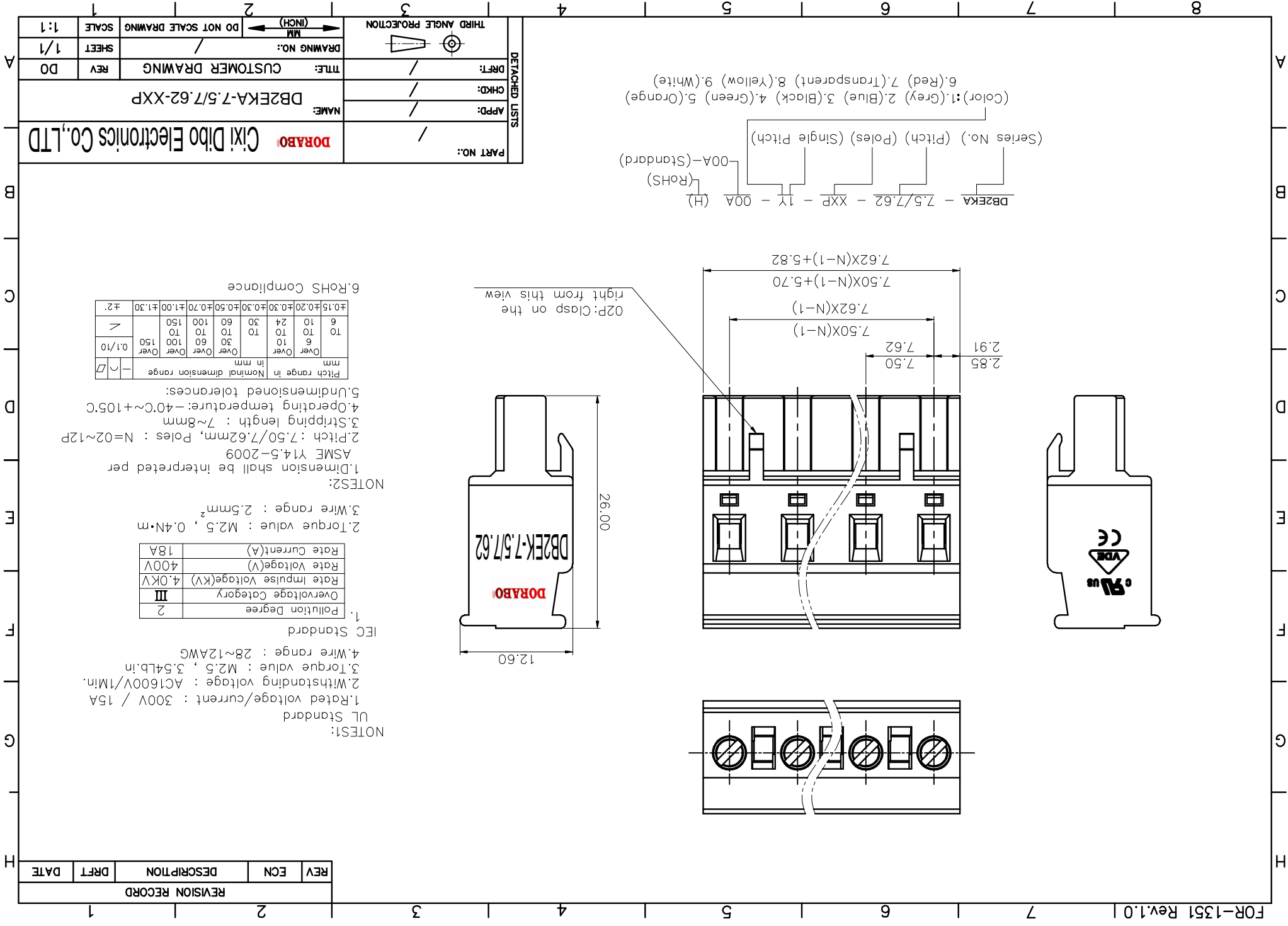


DBZEKA - 7.5/7.62 - XXP - 1X - 00A (H)
(RoHS)
00A-(Standard)
(Series No.) (Pitch) (Poles) (Single Pitch)

(Color): 1.(Grey) 2.(Blue) 3.(Black) 4.(Green) 5.(Orange) 6.(Red) 7.(Transparent) 8.(Yellow) 9.(White)

PART NO.:	/	
	DORABO	
NAME:	DBZEKA-7.5/7.62-XXP	
APPD:	/	
CHKD:	/	
DRAFT:	/	
TITLE:	CUSTOMER DRAWING	
REV:	DO	
SHEET:	1/1	
SCALE:	1:1	
THIRD ANGLE PROJECTION	MM	
DO NOT SCALE DRAWING	DO NOT SCALE DRAWING	

DETACHED LISTS



X-ON Electronics

Largest Supplier of Electrical and Electronic Components

Click to view similar products for [Pluggable Terminal Blocks](#) category:

Click to view products by [DIBO](#) manufacturer:

Other Similar products are found below :

[57.404.7553](#) [57.504.0053.7](#) [57.510.0053](#) [57.910.6153](#) [01.112.1453](#) [CTB932VE/6](#) [MC 1.5/ 6-ST-3.5 GY AU](#) [ET02015000J0G](#) [734-104](#) [734-302](#) [734-304](#) [8-141-P](#) [FKCT 2.5/ 3-ST KMGY](#) [860505](#) [860508](#) [860516](#) [860810](#) [861908](#) [GBPACX-12](#) [93.731.4953.0](#) [PV05-5,08-K](#) [PVP02-5,00](#) [PVP04-3,50](#) [PVS02-5,00](#) [1-1986160-3](#) [H-10](#) [ELFH09150](#) [ELFH16150](#) [ELFP03110](#) [ELFT06250](#) [ELFT07250](#) [ELVF09400](#) [ELVP03100](#) [ELXH03100](#) [ELXH071G0E](#) [ELXP041G0](#) [ELXT046G0](#) [1700101](#) [1700410](#) [1700425](#) [1703176](#) [1703243](#) [1705229](#) [1710175](#) [1714537](#) [1717806](#) [1719600](#) [1729386](#) [1734692](#) [1734795](#)