

REVISION RECORD			
REV	ECN	DESCRIPTION	DATE

NOTES1:  
UL Standard

1. Rated voltage/current : 300V / 15A
2. Withstanding voltage : AC1600V/1Min.
3. Torque value : M2.5 , 3.54lb.in
4. Wire range : 28~12AWG

IEC Standard

1.	Pollution Degree	2
	Overvoltage Category	III
	Rate Impulse Voltage(KV)	4.0KV
	Rate Voltage(V)	400V
	Rate Current(A)	18A

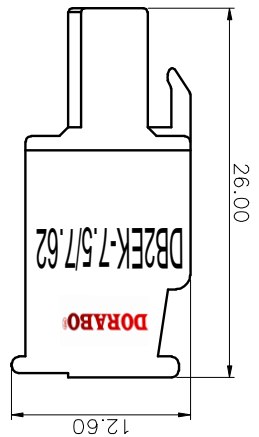
2. Torque value : M2.5 , 0.4N·m
3. Wire range : 2.5mm<sup>2</sup>

NOTES2:

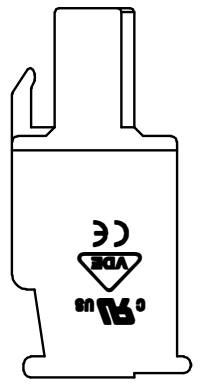
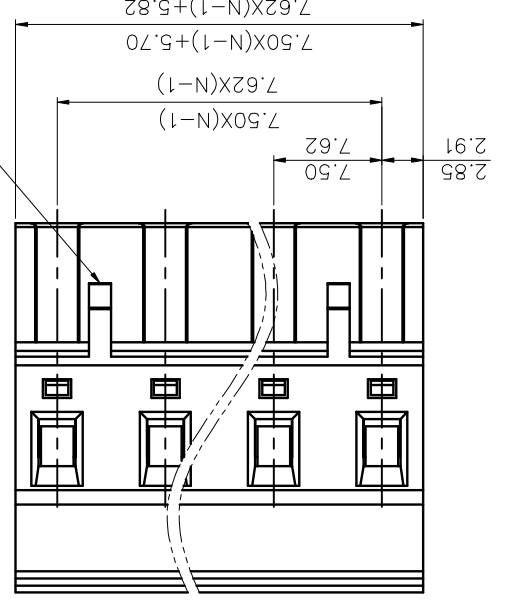
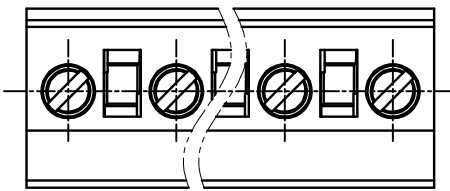
1. Dimension shall be interpreted per ASME Y14.5-2009
2. Pitch : 7.50/7.62mm, Poles : N=02~12P
3. Stripping length : 7~8mm
4. Operating temperature: -40°C~+105°C
5. Undimensioned tolerances:

Pitch range in mm	Normal dimension range	in mm	±2%
Over 150	Over 100	Over 150	±2%
Over 100	Over 60	Over 100	±2%
Over 60	Over 30	Over 60	±2%
Over 30	Over 10	Over 30	±2%
Over 10	Over 6	Over 10	±2%
Over 6	Over 24	Over 10	±2%
Over 10	Over 30	Over 10	±2%
Over 10	Over 60	Over 10	±2%
Over 10	Over 100	Over 10	±2%
Over 10	Over 150	Over 10	±2%
Over 10	Over 240	Over 10	±2%
Over 10	Over 300	Over 10	±2%
Over 10	Over 400	Over 10	±2%
Over 10	Over 500	Over 10	±2%
Over 10	Over 600	Over 10	±2%
Over 10	Over 700	Over 10	±2%
Over 10	Over 800	Over 10	±2%
Over 10	Over 900	Over 10	±2%
Over 10	Over 1000	Over 10	±2%

6. RoHS Compliance



02P: Clasp on the right from this view

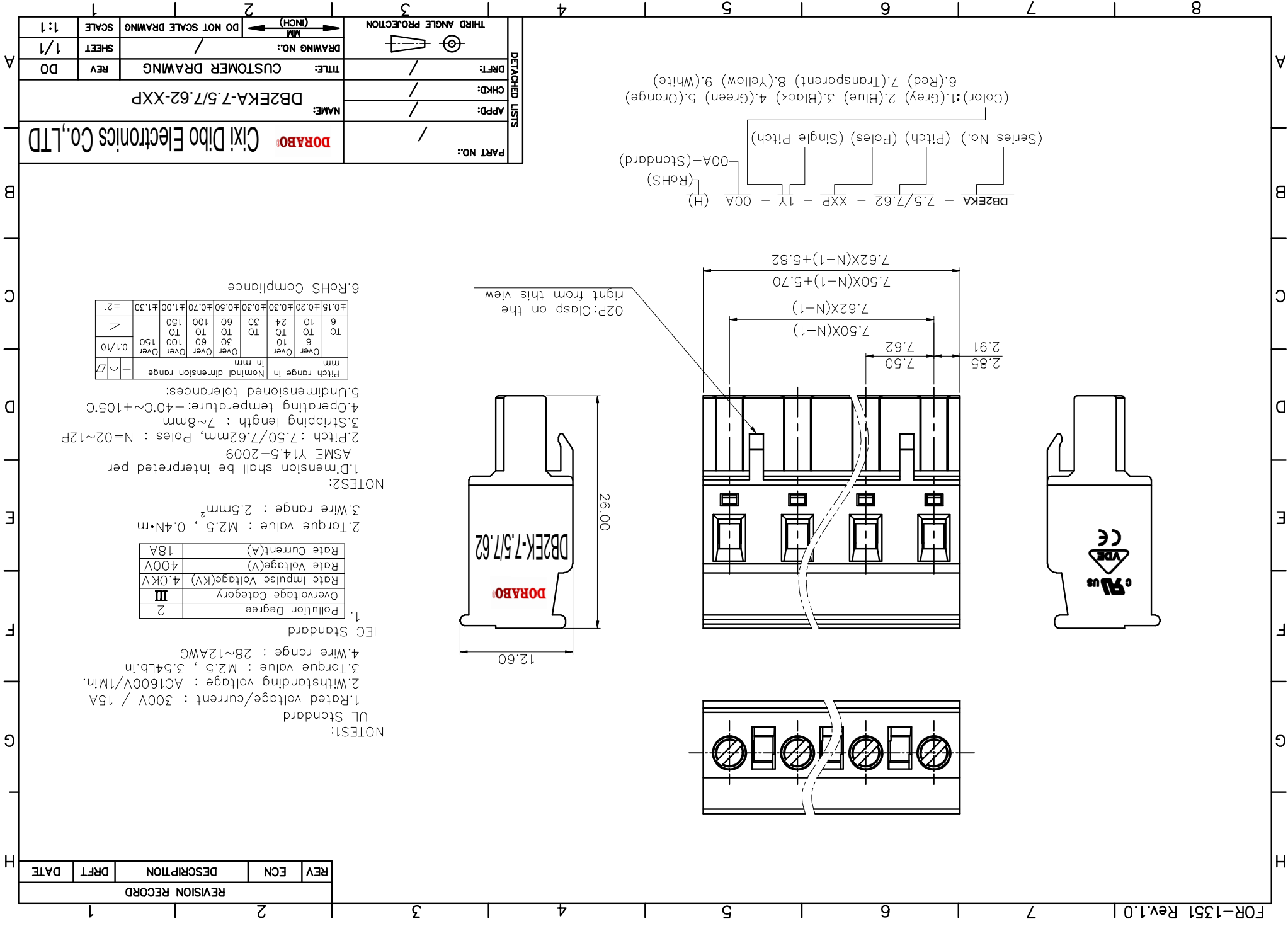


DBZEKA - 7.5/7.62 - XXP - 1X - 00A (H)  
(RoHS)  
00A-(Standard)  
(Series No.) (Pitch) (Poles) (Single Pitch)

(Color): 1.(Grey) 2.(Blue) 3.(Black) 4.(Green) 5.(Orange) 6.(Red) 7.(Transparent) 8.(Yellow) 9.(White)

PART NO.:	/	
	/	
APPD:	/	
CHKD:	/	
DRAFT:	/	
NAME:	DBZEKA-7.5/7.62-XXP	
TITLE:	CUSTOMER DRAWING	
REV:	DO	
SHEET:	1/1	
SCALE:	1:1	
THIRD ANGLE PROJECTION	MM	
DO NOT SCALE DRAWING	DO NOT SCALE DRAWING	

DETACHED LISTS



## X-ON Electronics

Largest Supplier of Electrical and Electronic Components

*Click to view similar products for [Pluggable Terminal Blocks](#) category:*

*Click to view products by [DIBO](#) manufacturer:*

Other Similar products are found below :

[57.404.7553](#) [57.504.0053.7](#) [57.510.0053](#) [57.910.6153](#) [01.112.1453](#) [CTB932VE/6](#) [MC 1.5/ 6-ST-3.5 GY AU](#) [ET02015000J0G](#) [734-104](#) [734-302](#) [734-304](#) [8-141-P](#) [FKCT 2.5/ 3-ST KMGY](#) [860505](#) [860508](#) [860516](#) [860810](#) [861908](#) [GBPACX-12](#) [93.731.4953.0](#) [PV05-5,08-K](#) [PVP02-5,00](#) [PVP04-3,50](#) [PVS02-5,00](#) [1-1986160-3](#) [H-10](#) [ELFH09150](#) [ELFH16150](#) [ELFP03110](#) [ELFT06250](#) [ELFT07250](#) [ELVF09400](#) [ELVP03100](#) [ELXH03100](#) [ELXH071G0E](#) [ELXP041G0](#) [ELXT046G0](#) [1700101](#) [1700410](#) [1700425](#) [1703176](#) [1703243](#) [1705229](#) [1710175](#) [1714537](#) [1717806](#) [1719600](#) [1729386](#) [1734692](#) [1734795](#)