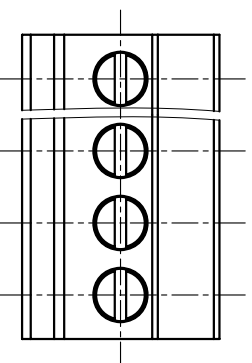
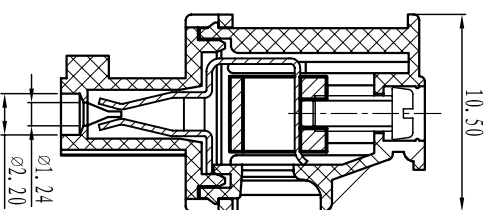
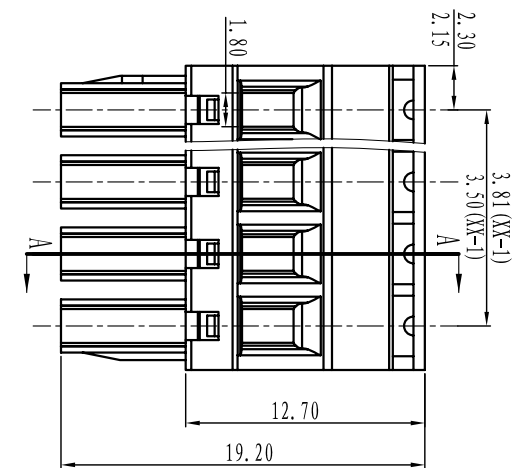


DORABO[®] Cixi Dibo Electronics Co.,LTD

产品规格书
product specification



电气性能/Electrical

参考标准/Standard: UL IEC
 额定电压/Rated voltage: 300V 250V
 额定电流/Rated current: 8A 10A
 接触电阻/Contact resistance: 20m Ω
 使用线径/Wire range: 28-16AWG 1.5mm²
 耐电压/Withstanding voltage: AC2000V/1Min
 绝缘电阻/Insulation resistance: 500M Ω /DC500V

机械性能/Mechanical

温度范围/Temp.Range: -40 $^{\circ}$ C+105 $^{\circ}$ C
 扭矩/Torque: 0.2Nm(1.71b`in)
 剥线长度/Strip length: 6-7mm

尺寸/Dimensions

间距/Pitch: 3.81mm, 3.50mm
 极数/Poles: 2p-24p

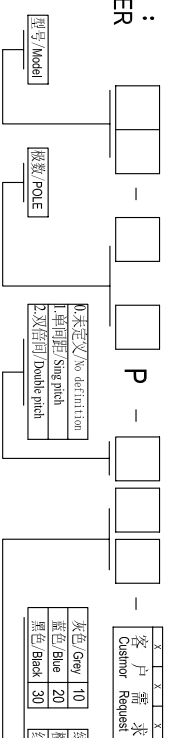
材质及电镀/Material

塑件/Housing: PA66, UL94V-0
 螺丝/Screws: M2, steel Zinc plated
 方块/Wire guard: Brass, Ni plated
 夹子/Clamp: Phosphor bronze, Ni plated

TOLERANCES EXCEPT AS NOTED

| | linear dimension | filllet | chamfer | short angle sid | ≡ | — | □ | // | ⊥ |
|----------------|--------------------------------------|---------|------------|-----------------------|--------------|--------------|-------------|------------|---|
| variable range | 6 to 30 30 to 120 120 to 480 | all | 6 to 10 | 10 to 50 50 to 120 | all | 5 to 30 | 30 to 120 | 120 to 120 | |
| tolerance | ±0.1 ±0.2 ±0.3 ±0.5 ±0.9 | ±0.2 | ±0.5 ±1 | 1 $^{\circ}$ 30' | 0.5 0.025 | 0.06 0.12 | 0.12 0.4 | | |

订购方式: HOW TO ORDER



| | | | | | |
|----------|----|-----------|----|----------------|----|
| 灰色/Grey | 10 | 绿色/Green | 40 | 透明/Transparent | 70 |
| 蓝色/Blue | 20 | 橙色/Orange | 50 | 黄色/Yellow | 80 |
| 黑色/Black | 30 | 红色/Red | 60 | 白色/White | 90 |

第一视角/FIRST ANGLE PROJECTION



| 单位/UNITS | mm | 尺寸/SIZE | A4 | 比例/SCALE |
|-------------------------------|----|---------|----|----------|
| Cixi Dibo Electronics Co.,LTD | | | | |

名称/NAME DB2EKB-381-XXP

X-ON Electronics

Largest Supplier of Electrical and Electronic Components

Click to view similar products for [Pluggable Terminal Blocks](#) category:

Click to view products by [DIBO](#) manufacturer:

Other Similar products are found below :

[57.404.7553](#) [57.504.0053.7](#) [57.510.0053](#) [57.910.6153](#) [01.112.1453](#) [CTB932VE/6](#) [MC 1.5/ 6-ST-3.5 GY AU](#) [ET02015000J0G](#) [734-104](#) [734-302](#) [734-304](#) [8-141-P](#) [FKCT 2.5/ 3-ST KMGY](#) [860505](#) [860508](#) [860516](#) [860810](#) [861908](#) [GBPACX-12](#) [93.731.4953.0](#) [PV05-5,08-K](#) [PVP02-5,00](#) [PVP04-3,50](#) [PVS02-5,00](#) [1-1986160-3](#) [H-10](#) [ELFH09150](#) [ELFH16150](#) [ELFP03110](#) [ELFT06250](#) [ELFT07250](#) [ELVF09400](#) [ELVP03100](#) [ELXH03100](#) [ELXH071G0E](#) [ELXP041G0](#) [ELXT046G0](#) [1700101](#) [1700410](#) [1700425](#) [1703176](#) [1705229](#) [1710175](#) [1714537](#) [1717806](#) [1719600](#) [1729386](#) [1734692](#) [1734795](#) [1736036](#)