

电气性能/Electrical

参考标准/Standard: UL IEC
 额定电压/Rated voltage: 300V 320V
 额定电流/Rated current: 15A 20A
 接触电阻/Contact resistance: 20mΩ
 使用线径/Wire range: 28-14AWG 2.5mm²
 耐电压/Withstanding voltage: AC2000V/1Min
 绝缘电阻/Insulation resistance: 500MΩ/DC500V

机械性能/Mechanical

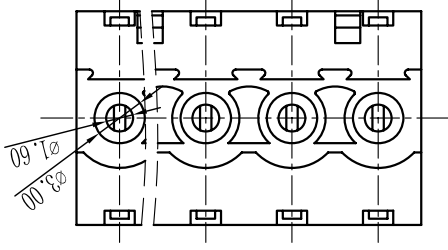
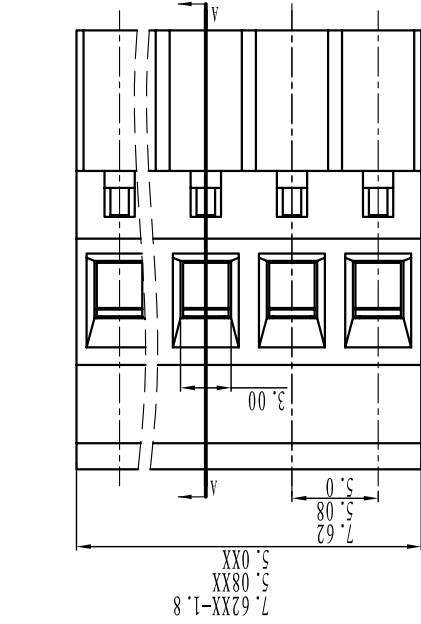
温度范围/Temp.Range: -40°C+105°C
 扭矩/Torque: 0.5Nm (4.51b in)
 剥线长度/Strip length: 7-8mm

尺寸/Dimensions

间距/Pitch: 5.0mm, 5.08mm, 7.62mm
 极数/Poles: 02P-24P

材质及电镀/Material

塑件/Housing: PA66, UL94V-0
 螺丝/Screws: M3, steel Zinc plated
 夹子/Clamp: Brass, Ni plated
 方块/wire guard: Phosphor bronze, Ni plated



TOOLERANCES EXCEPT AS NOTED

| | | | | | | | | | |
|------------------|------------------|--------|-----------|------------------|-------|-----------|----------|-------|-----------|
| linear dimension | linear dimension | fillet | chamfer | short angle side | ≡ | ≠ | □ | ∥ | ⊥ |
| tolerance | variable | range | tolerance | variable | range | tolerance | variable | range | tolerance |
| ±0.1 | ±0.2 | ±0.3 | ±0.5 | ±0.9 | ±0.2 | ±0.5 | ±1 | 1° | 30' |
| 6 | 30 | 120 | 480 | over | all | 6 | to | to | to |
| ±0.1 | ±0.2 | ±0.3 | ±0.5 | ±0.9 | ±0.2 | ±0.5 | ±1 | 1° | 30' |
| 6 | 30 | 120 | 480 | over | all | 6 | to | to | to |
| ±0.1 | ±0.2 | ±0.3 | ±0.5 | ±0.9 | ±0.2 | ±0.5 | ±1 | 1° | 30' |
| 6 | 30 | 120 | 480 | over | all | 6 | to | to | to |
| ±0.1 | ±0.2 | ±0.3 | ±0.5 | ±0.9 | ±0.2 | ±0.5 | ±1 | 1° | 30' |
| 6 | 30 | 120 | 480 | over | all | 6 | to | to | to |
| ±0.1 | ±0.2 | ±0.3 | ±0.5 | ±0.9 | ±0.2 | ±0.5 | ±1 | 1° | 30' |
| 6 | 30 | 120 | 480 | over | all | 6 | to | to | to |
| ±0.1 | ±0.2 | ±0.3 | ±0.5 | ±0.9 | ±0.2 | ±0.5 | ±1 | 1° | 30' |
| 6 | 30 | 120 | 480 | over | all | 6 | to | to | to |
| ±0.1 | ±0.2 | ±0.3 | ±0.5 | ±0.9 | ±0.2 | ±0.5 | ±1 | 1° | 30' |
| 6 | 30 | 120 | 480 | over | all | 6 | to | to | to |
| ±0.1 | ±0.2 | ±0.3 | ±0.5 | ±0.9 | ±0.2 | ±0.5 | ±1 | 1° | 30' |
| 6 | 30 | 120 | 480 | over | all | 6 | to | to | to |
| ±0.1 | ±0.2 | ±0.3 | ±0.5 | ±0.9 | ±0.2 | ±0.5 | ±1 | 1° | 30' |
| 6 | 30 | 120 | 480 | over | all | 6 | to | to | to |
| ±0.1 | ±0.2 | ±0.3 | ±0.5 | ±0.9 | ±0.2 | ±0.5 | ±1 | 1° | 30' |
| 6 | 30 | 120 | 480 | over | all | 6 | to | to | to |
| ±0.1 | ±0.2 | ±0.3 | ±0.5 | ±0.9 | ±0.2 | ±0.5 | ±1 | 1° | 30' |
| 6 | 30 | 120 | 480 | over | all | 6 | to | to | to |
| ±0.1 | ±0.2 | ±0.3 | ±0.5 | ±0.9 | ±0.2 | ±0.5 | ±1 | 1° | 30' |
| 6 | 30 | 120 | 480 | over | all | 6 | to | to | to |
| ±0.1 | ±0.2 | ±0.3 | ±0.5 | ±0.9 | ±0.2 | ±0.5 | ±1 | 1° | 30' |
| 6 | 30 | 120 | 480 | over | all | 6 | to | to | to |
| ±0.1 | ±0.2 | ±0.3 | ±0.5 | ±0.9 | ±0.2 | ±0.5 | ±1 | 1° | 30' |
| 6 | 30 | 120 | 480 | over | all | 6 | to | to | to |
| ±0.1 | ±0.2 | ±0.3 | ±0.5 | ±0.9 | ±0.2 | ±0.5 | ±1 | 1° | 30' |
| 6 | 30 | 120 | 480 | over | all | 6 | to | to | to |
| ±0.1 | ±0.2 | ±0.3 | ±0.5 | ±0.9 | ±0.2 | ±0.5 | ±1 | 1° | 30' |
| 6 | 30 | 120 | 480 | over | all | 6 | to | to | to |
| ±0.1 | ±0.2 | ±0.3 | ±0.5 | ±0.9 | ±0.2 | ±0.5 | ±1 | 1° | 30' |
| 6 | 30 | 120 | 480 | over | all | 6 | to | to | to |
| ±0.1 | ±0.2 | ±0.3 | ±0.5 | ±0.9 | ±0.2 | ±0.5 | ±1 | 1° | 30' |
| 6 | 30 | 120 | 480 | over | all | 6 | to | to | to |
| ±0.1 | ±0.2 | ±0.3 | ±0.5 | ±0.9 | ±0.2 | ±0.5 | ±1 | 1° | 30' |
| 6 | 30 | 120 | 480 | over | all | 6 | to | to | to |
| ±0.1 | ±0.2 | ±0.3 | ±0.5 | ±0.9 | ±0.2 | ±0.5 | ±1 | 1° | 30' |
| 6 | 30 | 120 | 480 | over | all | 6 | to | to | to |
| ±0.1 | ±0.2 | ±0.3 | ±0.5 | ±0.9 | ±0.2 | ±0.5 | ±1 | 1° | 30' |
| 6 | 30 | 120 | 480 | over | all | 6 | to | to | to |
| ±0.1 | ±0.2 | ±0.3 | ±0.5 | ±0.9 | ±0.2 | ±0.5 | ±1 | 1° | 30' |
| 6 | 30 | 120 | 480 | over | all | 6 | to | to | to |
| ±0.1 | ±0.2 | ±0.3 | ±0.5 | ±0.9 | ±0.2 | ±0.5 | ±1 | 1° | 30' |
| 6 | 30 | 120 | 480 | over | all | 6 | to | to | to |
| ±0.1 | ±0.2 | ±0.3 | ±0.5 | ±0.9 | ±0.2 | ±0.5 | ±1 | 1° | 30' |
| 6 | 30 | 120 | 480 | over | all | 6 | to | to | to |
| ±0.1 | ±0.2 | ±0.3 | ±0.5 | ±0.9 | ±0.2 | ±0.5 | ±1 | 1° | 30' |
| 6 | 30 | 120 | 480 | over | all | 6 | to | to | to |
| ±0.1 | ±0.2 | ±0.3 | ±0.5 | ±0.9 | ±0.2 | ±0.5 | ±1 | 1° | 30' |
| 6 | 30 | 120 | 480 | over | all | 6 | to | to | to |
| ±0.1 | ±0.2 | ±0.3 | ±0.5 | ±0.9 | ±0.2 | ±0.5 | ±1 | 1° | 30' |
| 6 | 30 | 120 | 480 | over | all | 6 | to | to | to |
| ±0.1 | ±0.2 | ±0.3 | ±0.5 | ±0.9 | ±0.2 | ±0.5 | ±1 | 1° | 30' |
| 6 | 30 | 120 | 480 | over | all | 6 | to | to | to |
| ±0.1 | ±0.2 | ±0.3 | ±0.5 | ±0.9 | ±0.2 | ±0.5 | ±1 | 1° | 30' |
| 6 | 30 | 120 | 480 | over | all | 6 | to | to | to |
| ±0.1 | ±0.2 | ±0.3 | ±0.5 | ±0.9 | ±0.2 | ±0.5 | ±1 | 1° | 30' |
| 6 | 30 | 120 | 480 | over | all | 6 | to | to | to |
| ±0.1 | ±0.2 | ±0.3 | ±0.5 | ±0.9 | ±0.2 | ±0.5 | ±1 | 1° | 30' |
| 6 | 30 | 120 | 480 | over | all | 6 | to | to | to |
| ±0.1 | ±0.2 | ±0.3 | ±0.5 | ±0.9 | ±0.2 | ±0.5 | ±1 | 1° | 30' |
| 6 | 30 | 120 | 480 | over | all | 6 | to | to | to |
| ±0.1 | ±0.2 | ±0.3 | ±0.5 | ±0.9 | ±0.2 | ±0.5 | ±1 | 1° | 30' |
| 6 | 30 | 120 | 480 | over | all | 6 | to | to | to |
| ±0.1 | ±0.2 | ±0.3 | ±0.5 | ±0.9 | ±0.2 | ±0.5 | ±1 | 1° | 30' |
| 6 | 30 | 120 | 480 | over | all | 6 | to | to | to |
| ±0.1 | ±0.2 | ±0.3 | ±0.5 | ±0.9 | ±0.2 | ±0.5 | ±1 | 1° | 30' |
| 6 | 30 | 120 | 480 | over | all | 6 | to | to | to |
| ±0.1 | ±0.2 | ±0.3 | ±0.5 | ±0.9 | ±0.2 | ±0.5 | ±1 | 1° | 30' |
| 6 | 30 | 120 | 480 | over | all | 6 | to | to | to |
| ±0.1 | ±0.2 | ±0.3 | ±0.5 | ±0.9 | ±0.2 | ±0.5 | ±1 | 1° | 30' |
| 6 | 30 | 120 | 480 | over | all | 6 | to | to | to |
| ±0.1 | ±0.2 | ±0.3 | ±0.5 | ±0.9 | ±0.2 | ±0.5 | ±1 | 1° | 30' |
| 6 | 30 | 120 | 480 | over | all | 6 | to | to | to |
| ±0.1 | ±0.2 | ±0.3 | ±0.5 | ±0.9 | ±0.2 | ±0.5 | ±1 | 1° | 30' |
| 6 | 30 | 120 | 480 | over | all | 6 | to | to | to |
| ±0.1 | ±0.2 | ±0.3 | ±0.5 | ±0.9 | ±0.2 | ±0.5 | ±1 | 1° | 30' |
| 6 | 30 | 120 | 480 | over | all | 6 | to | to | to |
| ±0.1 | ±0.2 | ±0.3 | ±0.5 | ±0.9 | ±0.2 | ±0.5 | ±1 | 1° | 30' |
| 6 | 30 | 120 | 480 | over | all | 6 | to | to | to |
| ±0.1 | ±0.2 | ±0.3 | ±0.5 | ±0.9 | ±0.2 | ±0.5 | ±1 | 1° | 30' |
| 6 | 30 | 120 | 480 | over | all | 6 | to | to | to |
| ±0.1 | ±0.2 | ±0.3 | ±0.5 | ±0.9 | ±0.2 | ±0.5 | ±1 | 1° | 30' |
| 6 | 30 | 120 | 480 | over | all | 6 | to | to | to |
| ±0.1 | ±0.2 | ±0.3 | ±0.5 | ±0.9 | ±0.2 | ±0.5 | ±1 | 1° | 30' |
| 6 | 30 | 120 | 480 | over | all | 6 | to | to | to |
| ±0.1 | ±0.2 | ±0.3 | ±0.5 | ±0.9 | ±0.2 | ±0.5 | ±1 | 1° | 30' |
| 6 | 30 | 120 | 480 | over | all | 6 | to | to | to |
| ±0.1 | ±0.2 | ±0.3 | ±0.5 | ±0.9 | ±0.2 | ±0.5 | ±1 | 1° | 30' |
| 6 | 30 | 120 | 480 | over | all | 6 | to | to | to |
| ±0.1 | ±0.2 | ±0.3 | ±0.5 | ±0.9 | ±0.2 | ±0.5 | ±1 | 1° | 30' |
| 6 | 30 | 120 | 480 | over | all | 6 | to | to | to |
| ±0.1 | ±0.2 | ±0.3 | ±0.5 | ±0.9 | ±0.2 | ±0.5 | ±1 | 1° | 30' |
| 6 | 30 | 120 | 480 | over | all | 6 | to | to | to |
| ±0.1 | ±0.2 | ±0.3 | ±0.5 | ±0.9 | ±0.2 | ±0.5 | ±1 | 1° | 30' |
| 6 | 30 | 120 | 480 | over | all | 6 | to | to | to |
| ±0.1 | ±0.2 | ±0.3 | ±0.5 | ±0.9 | ±0.2 | ±0.5 | ±1 | 1° | 30' |
| 6 | 30 | 120 | 480 | over | all | 6 | to | to | to |
| ±0.1 | ±0.2 | ±0.3 | ±0.5 | ±0.9 | ±0.2 | ±0.5 | ±1 | 1° | 30' |
| 6 | 30 | 120 | 480 | over | all | 6 | to | to | to |
| ±0.1 | ±0.2 | ±0.3 | ±0.5 | ±0.9 | ±0.2 | ±0.5 | ±1 | 1° | 30' |
| 6 | 30 | 120 | 480 | over | all | 6 | to | to | to |
| ±0.1 | ±0.2 | ±0.3 | ±0.5 | ±0.9 | ±0.2 | ±0.5 | ±1 | 1° | 30' |
| 6 | 30 | 120 | 480 | over | all | 6 | to | to | to |
| ±0.1 | ±0.2 | ±0.3 | ±0.5 | ±0.9 | ±0.2 | ±0.5 | ±1 | 1° | 30' |
| 6 | 30 | 120 | 480 | over | all | 6 | to | to | to |
| ±0.1 | ±0.2 | ±0.3 | ±0.5 | ±0.9 | ±0.2 | ±0.5 | ±1 | 1° | 30' |
| 6 | 30 | 120 | 480 | over | all | 6 | to | to | to |
| ±0.1 | ±0.2 | ±0.3 | ±0.5 | ±0.9 | ±0.2 | ±0.5 | ±1 | 1° | 30' |
| 6 | 30 | 120 | 480 | over | all | 6 | to | to | to |
| ±0.1 | ±0.2 | ±0.3 | ±0.5 | ±0.9 | ±0.2 | ±0.5 | ±1 | 1° | 30' |
| 6 | 30 | 120 | 480 | over | all | 6 | to | to | to |
| ±0.1 | ±0.2 | ±0.3 | ±0.5 | ±0.9 | ±0.2 | ±0.5 | ±1 | 1° | 30' |
| 6 | 30 | 120 | 480 | over | all | 6 | to | to | to |
| ±0.1 | ±0.2 | ±0.3 | ±0.5 | ±0.9 | ±0.2 | ±0.5 | ±1 | 1° | 30' |
| 6 | 30 | 120 | 480 | over | all | 6 | to | to | to |
| ±0.1 | ±0.2 | ±0.3 | ±0.5 | ±0.9 | ±0.2 | ±0.5 | ±1 | 1° | 30' |
| 6 | 30 | 120 | 480 | over | all | 6 | to | to | to |
| ±0.1 | ±0.2 | ±0.3 | ±0.5 | ±0.9 | ±0.2 | ±0.5 | ±1 | 1° | 30' |
| 6 | 30 | 120 | 480 | over | all | 6 | to</ | | |

X-ON Electronics

Largest Supplier of Electrical and Electronic Components

Click to view similar products for [Pluggable Terminal Blocks](#) category:

Click to view products by [DIBO](#) manufacturer:

Other Similar products are found below :

[57.404.7553](#) [57.504.0053.7](#) [57.510.0053](#) [57.910.6153](#) [01.112.1453](#) [CTB932VE/6](#) [MC 1.5/ 6-ST-3.5 GY AU](#) [ET02015000J0G](#) [734-104](#) [734-302](#) [734-304](#) [8-141-P](#) [FKCT 2.5/ 3-ST KMGY](#) [860505](#) [860508](#) [860516](#) [860810](#) [861908](#) [GBPACX-12](#) [93.731.4953.0](#) [PV05-5,08-K](#) [PVP02-5,00](#) [PVP04-3,50](#) [PVS02-5,00](#) [1-1986160-3](#) [H-10](#) [ELFH09150](#) [ELFH16150](#) [ELFP03110](#) [ELFT06250](#) [ELFT07250](#) [ELVF09400](#) [ELVP03100](#) [ELXH03100](#) [ELXH071G0E](#) [ELXP041G0](#) [ELXT046G0](#) [1700101](#) [1700410](#) [1700425](#) [1703176](#) [1703243](#) [1705229](#) [1710175](#) [1714537](#) [1717806](#) [1719600](#) [1729386](#) [1734692](#) [1734795](#)