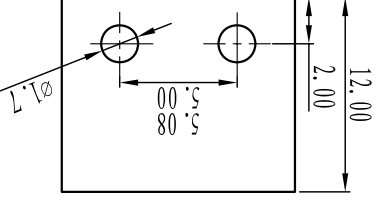
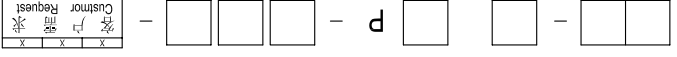


SECTION A-A



电气性能/Electrical
 参考标准/Standard: UL IEC
 额定电压/Rated voltage: 300V 320V
 额定电流/Rated current: 15A 20A
 接触电阻/Contact resistance: 20mΩ
 耐压/Withstanding voltage: AC2000V/1Min
 绝缘电阻/Insulation resistance: 500MΩ/DC500V
 机械性能/Mechanical
 温度范围/Temp.Range: -40°C~+105°C
 瞬间温度/MAX Soldering: +250°C, for 5 Sec
 尺寸/Dimensions
 间距/Pitch: 5.00mm, 5.08mm
 极数/Poles: 2P-24P
 材质及电镀/Material
 塑件/Housing: PA66, UL94V-0
 焊针/Pin header: Brass, Tin plated

订购方式:
HOW TO ORDER:



0.未定义/No definition	灰色/Grey	10
1.单间距/Sing pitch	蓝色/Blue	20
2.双间距/Double pitch	黑色/Black	30
	灰色/Grey	40
	绿色/Green	40
	绿色/Orange	50
	红色/Red	60
	黄色/Yellow	80
	透明/Transparent	70
	白色/White	90

TOLERANCES EXCEPT AS NOTED

Linear dimension	linear dimension	fillet	chamfer	short angle sid	≡	—	◇	//	⊥
tolerance	tolerance	tolerance	tolerance	tolerance	tolerance	tolerance	tolerance	tolerance	tolerance
±0.1	±0.2	±0.2	±0.5	±1	1°	30'	20'	10'	0.5
to 6	to 30	to 120	to 480	to 10	to 50	to 120	to 120	to 120	to 0.12
variable	variable	variable	variable	variable	variable	variable	variable	variable	variable
to 6	to 30	to 120	to 480	to 10	to 50	to 120	to 120	to 120	to 0.4
over	over	over	over	over	over	over	over	over	over

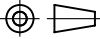
Cixi Dibo Electronics Co.,LTD

名称/NAME

DB2ER-5.08-XXP-F

单位/UNITS mm 尺寸/SIZE A4 比例/SCALE

第一视角/FIRST ANGLE PROJECTION



X-ON Electronics

Largest Supplier of Electrical and Electronic Components

Click to view similar products for [Pluggable Terminal Blocks](#) category:

Click to view products by [DIBO](#) manufacturer:

Other Similar products are found below :

[57.404.7553](#) [57.504.0053.7](#) [57.510.0053](#) [57.910.6153](#) [01.112.1453](#) [CTB932VE/6](#) [MC 1.5/ 6-ST-3.5 GY AU](#) [ET02015000J0G](#) [734-104](#) [734-302](#) [734-304](#) [8-141-P](#) [FKCT 2.5/ 3-ST KMGY](#) [860505](#) [860508](#) [860516](#) [860810](#) [861908](#) [GBPACX-12](#) [93.731.4953.0](#) [PV05-5,08-K](#) [PVP02-5,00](#) [PVP04-3,50](#) [PVS02-5,00](#) [1-1986160-3](#) [H-10](#) [ELFH09150](#) [ELFH16150](#) [ELFP03110](#) [ELFT06250](#) [ELFT07250](#) [ELVF09400](#) [ELVP03100](#) [ELXH03100](#) [ELXH071G0E](#) [ELXP041G0](#) [ELXT046G0](#) [1700101](#) [1700410](#) [1700425](#) [1703176](#) [1703243](#) [1705229](#) [1710175](#) [1714537](#) [1717806](#) [1719600](#) [1729386](#) [1734692](#) [1734795](#)