

REVISION RECORD			
REV	ECN	DESCRIPTION	DATE

NOTE1:

UL Standard  
 1. Rated voltage/current : 300V / 8A  
 2. Withstanding voltage : AC1600V/1min.

IEC Standard

1. Pollution Degree	2
Overvoltage Category	II
Rate Impulse Voltage(kV)	2.5kV
Rate Voltage(V)	250V
Rate Current(A)	7A

NOTE2:

1. Dimension shall be interpreted per ASME Y14.5-2009  
 2. Pitch : 3.5/3.81mm, Poles : N=02~22P  
 3. Operating temperature: -40°C~+105°C  
 4. Undimensioned tolerances:

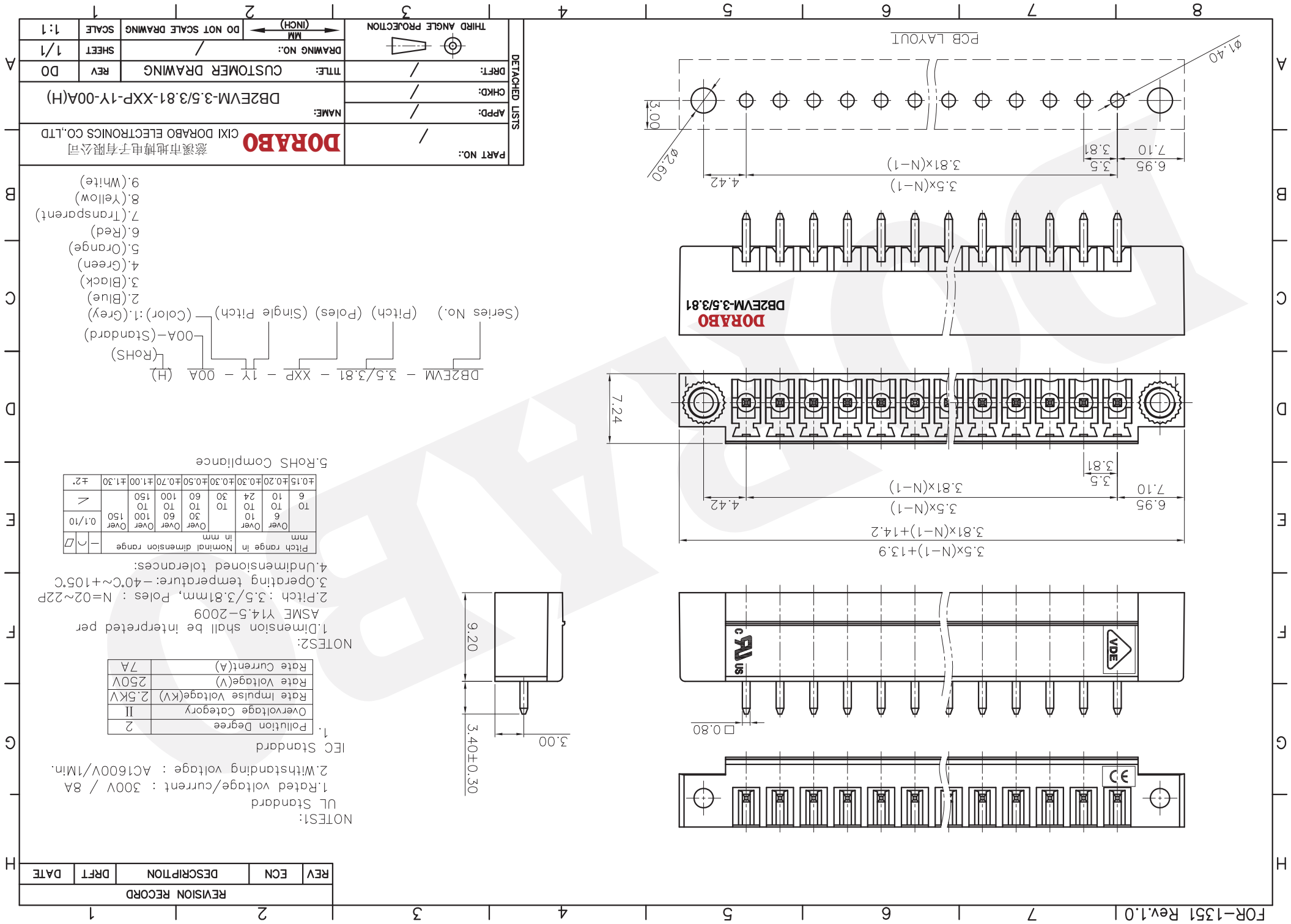
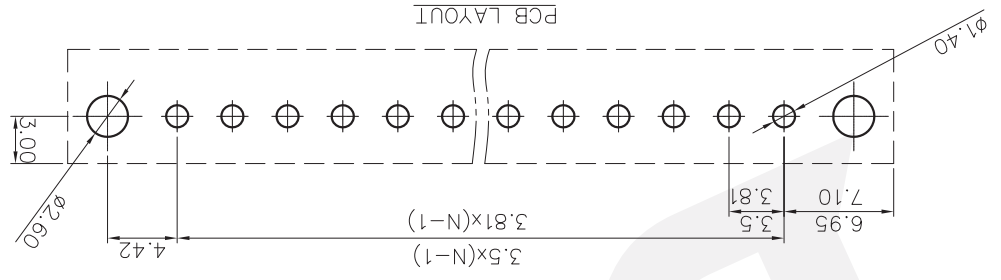
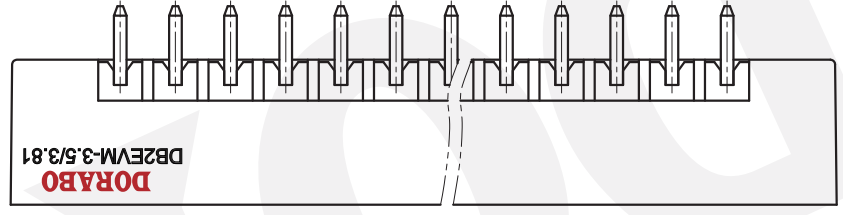
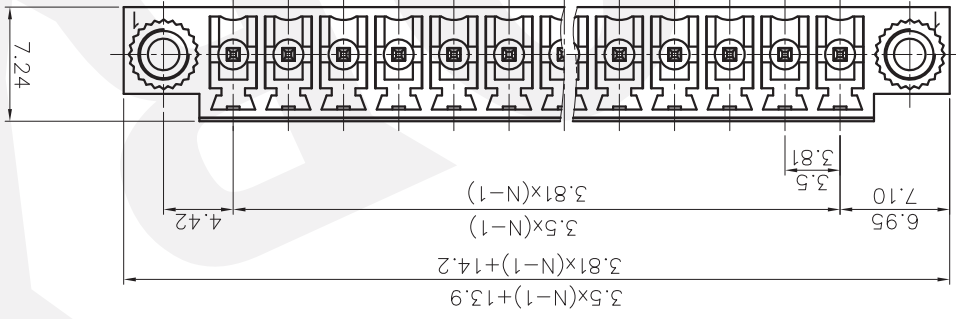
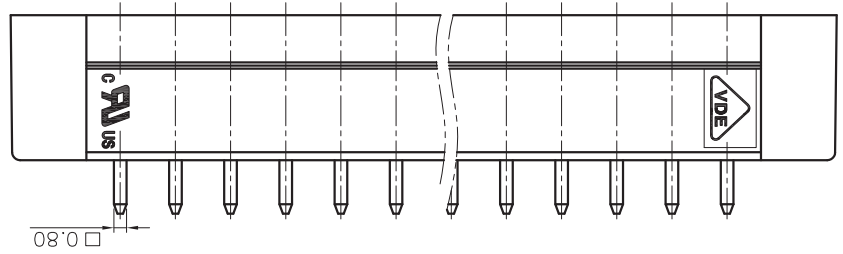
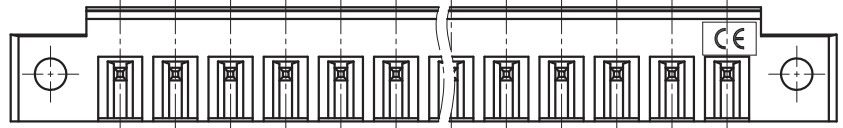
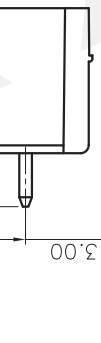
Pitch range in mm	Over	TO	mm
±0.15	±0.20	±0.30	±2.0
±0.30	±0.40	±0.50	±1.00
±0.50	±0.70	±1.00	±1.50
±0.70	±1.00	±1.50	±2.0

5. RoHS Compliance

DB2EVM - 3.5/3.81 - XXP - 1Y - 00A (H)  
 (RoHS)  
 00A-(Standard)  
 (Color):1.(Grey)  
 (Series No.) (Pitch) (Poles) (Single Pitch)  
 1.(Blue)  
 2.(Black)  
 3.(Green)  
 4.(Orange)  
 5.(Red)  
 6.(Transparent)  
 7.(Yellow)  
 8.(White)  
 9.(White)

- 9.(White)
- 8.(Yellow)
- 7.(Transparent)
- 6.(Red)
- 5.(Orange)
- 4.(Green)
- 3.(Black)
- 2.(Blue)

PART NO.:	/		
APPD.:	/		
CHKD.:	/		
DRFT.:	/		
NAME:	DB2EVM-3.5/3.81-XXP-1Y-00A(H)		
TITLE:	CUSTOMER DRAWING		
REV	DO		
SHEET	1/1		
SCALE	1:1		
DO NOT SCALE DRAWING	/		
THIRD ANGLE PROJECTION	/		
DRAWING NO.:	/		
MM	/		
(INCH)	/		



## X-ON Electronics

Largest Supplier of Electrical and Electronic Components

*Click to view similar products for [Headers & Wire Housings](#) category:*

*Click to view products by [DIBO](#) manufacturer:*

Other Similar products are found below :

[95000-104TRLF](#) [10135584-644402LF](#) [DF62W-EP2022PCA](#) [95000-106TRLF](#) [DF62W-2022SCA](#) [DF62W-EP2022PC](#) [2203348](#) [DF62W-2022SC](#) [1084018](#) [1029039](#) [1084017](#) [802-10-012-10-002000](#) [1112640](#) [1112639](#) [891-007-9SS-BST1T](#) [000-34000](#) [0008550134](#) [0009482033](#) [0009507031](#) [57102-F02-18ULF](#) [57102-S06-03LF](#) [57202-S52-04LF](#) [PCN6-15S-2.5E](#) [0039019024](#) [58102-G61-06LF](#) [582553-1](#) [0009485154](#) [0009508121](#) [0022285053](#) [0050291907](#) [018731A](#) [LY20-4P-DT1-P1E-BR](#) [02.125.8002.8](#) [60101931](#) [60598-1 \(Cut Strip\)](#) [M1625-3R/100](#) [61062-3](#) [61082-181009](#) [CSU011177004](#) [636-1427](#) [638009-1](#) [641938-9](#) [641991-4](#) [644168-1](#) [644827-2](#) [647662-1](#) [65039-019ELF](#) [65692-001LF](#) [65781-018](#) [65781-047](#)