

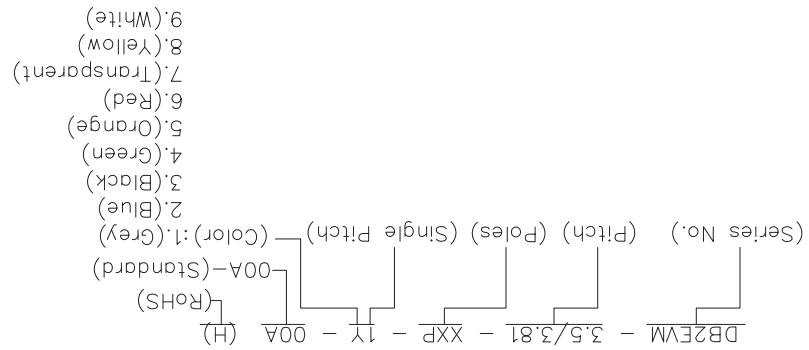
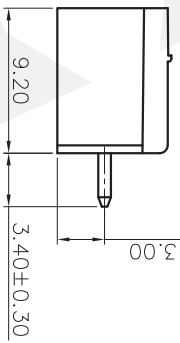
| REVISION RECORD | | | | |
|-----------------|-----|-------------|------|------|
| REV | ECN | DESCRIPTION | DRFT | DATE |
| | | | | |

NOTE1: UL Standard
 1.Rated voltage/current : 300V / 8A
 2.Withstanding voltage : AC1600V/1min.

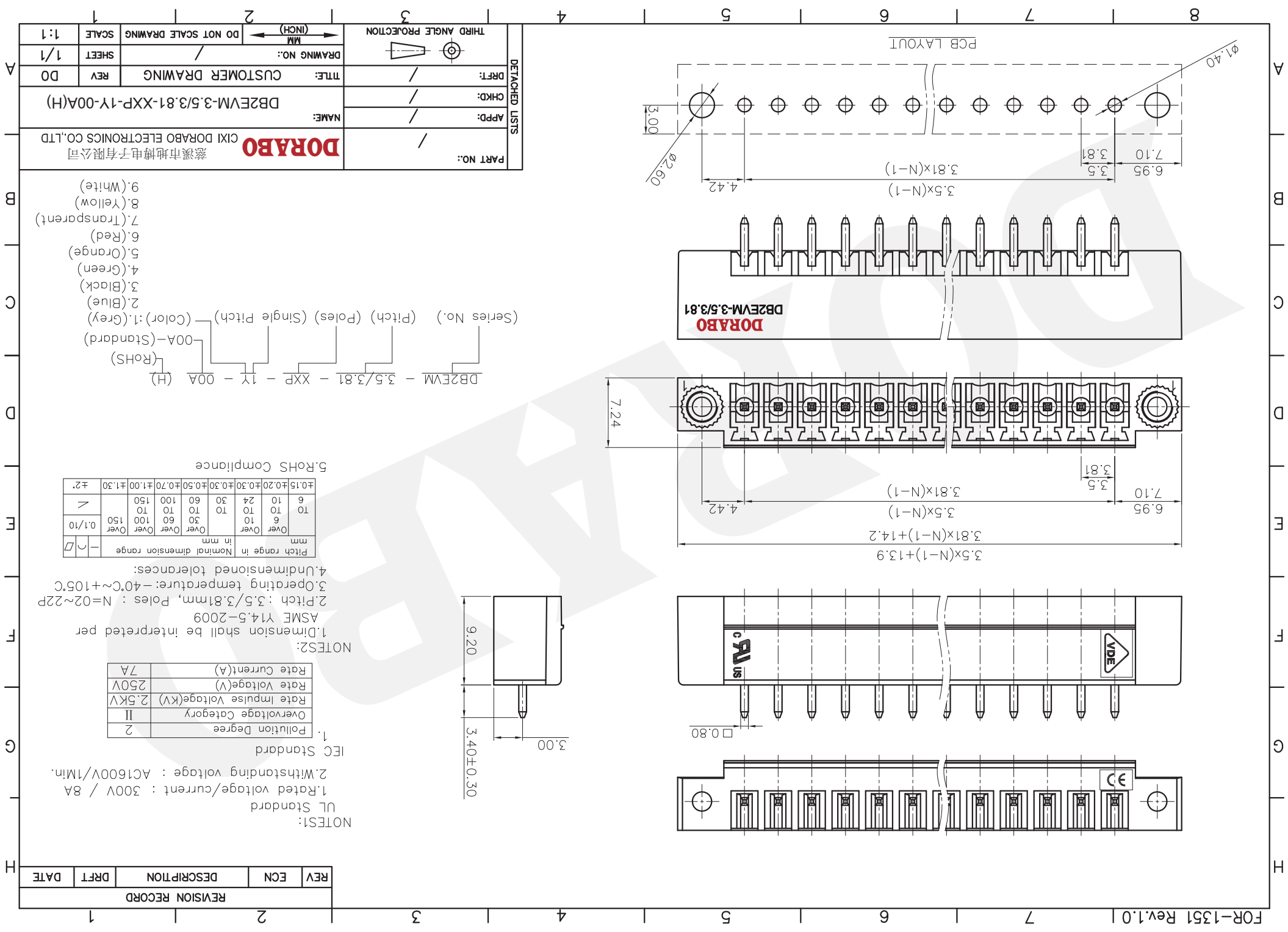
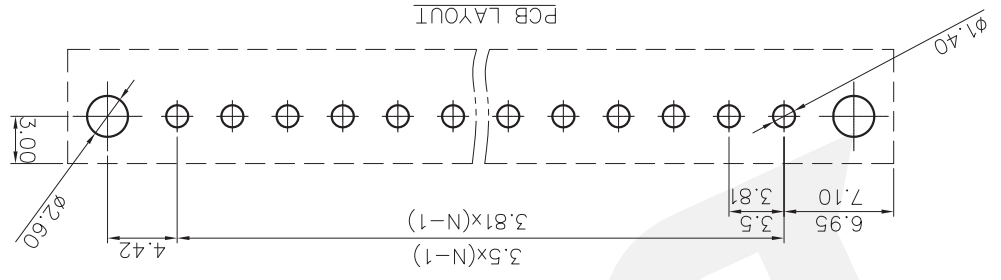
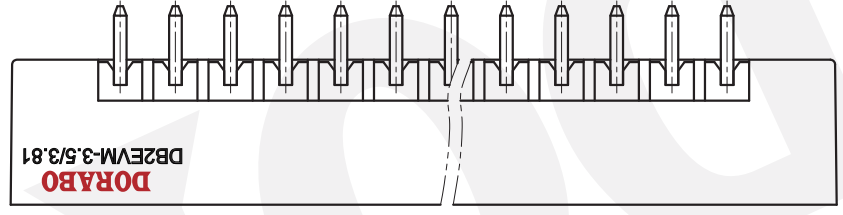
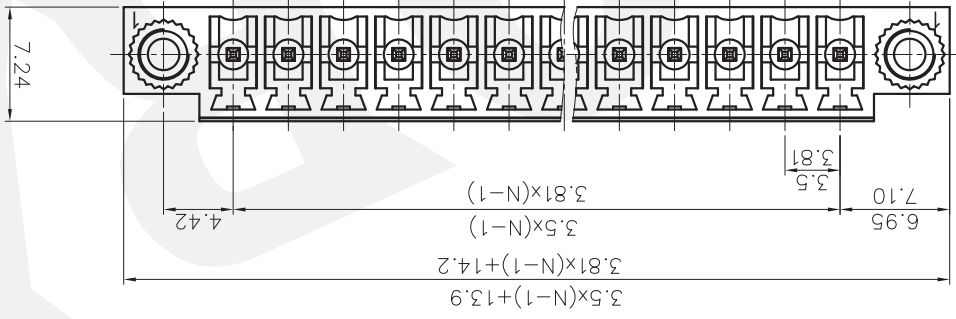
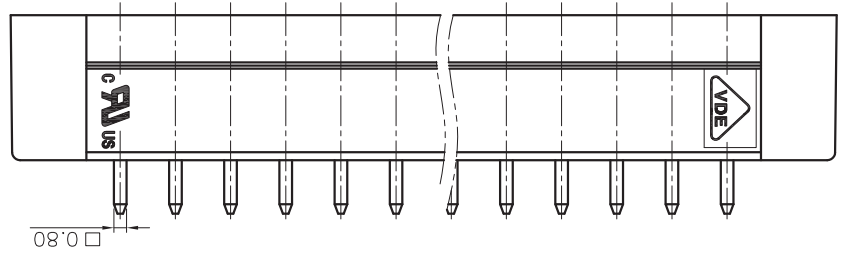
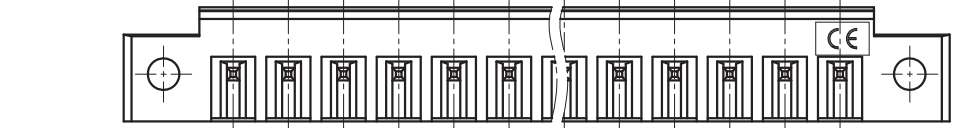
IEC Standard
 1. Pollution Degree 2
 2. Overvoltage Category II
 3. Rate Impulse Voltage(kV) 2.5kV
 4. Rate Voltage(V) 250V
 5. Rate Current(A) 7A

| | | | | | | | | |
|-------------|-------|-------------------------|-------|-------|-------|-------|-------|-------|
| ±2% | ±1.30 | ±1.00 | ±1.50 | ±0.70 | ±0.50 | ±0.30 | ±0.20 | ±0.15 |
| TO | TO | TO | TO | TO | TO | TO | TO | TO |
| 6 | 10 | 6 | 10 | 30 | 60 | 100 | 150 | 240 |
| Over | Over | Over | Over | Over | Over | Over | Over | Over |
| mm | in mm | mm | in mm | mm | in mm | mm | in mm | mm |
| Pitch range | in | Nominal dimension range | in | mm | in | mm | in | mm |

NOTE2:
 1.Dimension shall be interpreted per ASME Y14.5-2009
 2.Pitch : 3.5/3.81mm, Poles : N=02~22P
 3.Operating temperature: -40°C~+105°C
 4.Undimensioned tolerances:
 5.RoHS Compliance



| | | |
|----------------|------------------------|---------------------------|
| PART NO.: | DORABO 慈溪市地博电子有限公司 | |
| | NAME: | DB2EVM-3.5/3.81-1X-00A(H) |
| | CHKD: | / |
| | DRFT: | / |
| DETACHED LISTS | THIRD ANGLE PROJECTION | |
| | DRAWING NO.: | MM |
| | DO NOT SCALE DRAWING | ← (INCH) → |
| SCALE | 1:1 | |
| SHEET | 1/1 | |
| REV | DO | |
| TITLE: | CUSTOMER DRAWING | |



X-ON Electronics

Largest Supplier of Electrical and Electronic Components

Click to view similar products for [Headers & Wire Housings](#) category:

Click to view products by [DIBO](#) manufacturer:

Other Similar products are found below :

[95000-104TRLF](#) [10135584-644402LF](#) [DF62W-EP2022PCA](#) [95000-106TRLF](#) [DF62W-2022SCA](#) [DF62W-EP2022PC](#) [2203348](#) [DF62W-2022SC](#) [1084018](#) [1029039](#) [1084017](#) [802-10-012-10-002000](#) [1112640](#) [1112639](#) [891-007-9SS-BST1T](#) [000-34000](#) [0008550134](#) [0009482033](#) [0009507031](#) [57102-F02-18ULF](#) [57102-S06-03LF](#) [57202-S52-04LF](#) [PCN6-15S-2.5E](#) [0039019024](#) [58102-G61-06LF](#) [582553-1](#) [0009485154](#) [0009508121](#) [0022285053](#) [0050291907](#) [018731A](#) [LY20-4P-DT1-P1E-BR](#) [02.125.8002.8](#) [60101931](#) [60598-1 \(Cut Strip\)](#) [M1625-3R/100](#) [61062-3](#) [61082-181009](#) [CSU011177004](#) [636-1427](#) [638009-1](#) [641938-9](#) [641991-4](#) [644168-1](#) [644827-2](#) [647662-1](#) [65039-019ELF](#) [65692-001LF](#) [65781-018](#) [65781-047](#)