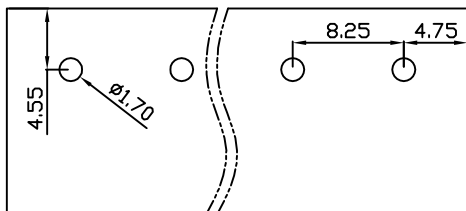
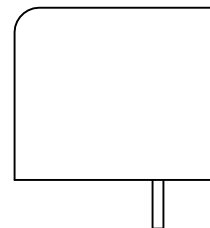
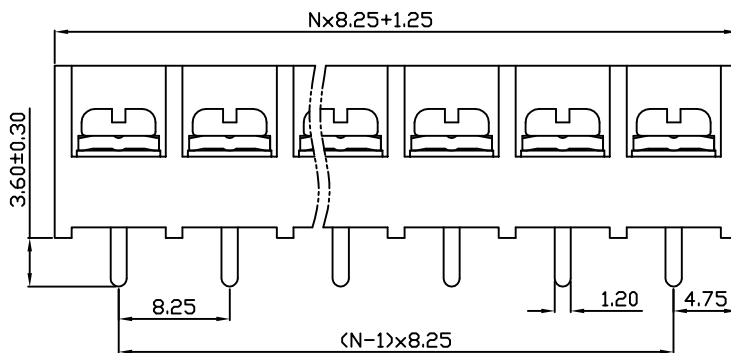
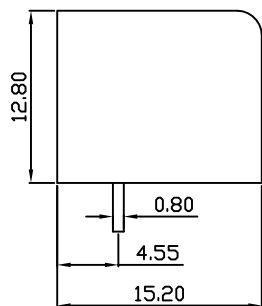
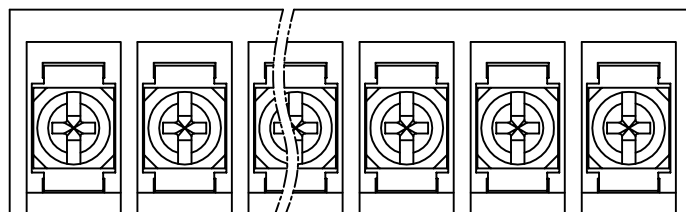


| linear dimension(Tolerances Standard GB/T 14486-2008) | | | | | | | | — | ∇ | \perp |
|-------------------------------------------------------|-------|--------------|---------------|---------------|----------------|-----------------|-------------|-------|----------------|-------------|
| variable range | to 6 | over 6 to 10 | over 10 to 30 | over 30 to 60 | over 60 to 100 | over 100 to 160 | over 160 to | to 10 | over 10 to 100 | over 100 to |
| tolerance | ±0.20 | ±0.30 | ±0.50 | ±0.70 | ±1.00 | ±1.30 | ±1.60 | 0.10 | 0.30 | 0.60 |



PCB Layout



DBT50 — 8.25 — XXP — C — S/P
 (Series No.) (Pitch) (Poles) Slotted/Phillips
 (Color):GN:(Green), BK:(Black), BU:(Blue), RD:(Red), GY:(Gray)
 OG:(Orange), WT:(White), YL:(Yellow), CR:(Clear)

APPD: JTING Chen 2022.11.9
 CHKD: Duck Mao 2022.11.9
 DRFT: Steven Lu 2022.11.9

| UL/CUL 技术参数 | | UL/CUL Technical Data | | |
|-------------------------------------------|--|-----------------------|---|-----|
| 等级 Use Group | | B | C | D |
| 额定电压 Rated Voltage [V] | | 300 | - | 300 |
| 额定电流 Rated Current [A] | | 20 | - | 10 |
| 接线范围 Wire Range | | 22-14 | | |
| 单/多芯线 Solid/Stranded [AWG] | | | | |
| IEC 技术参数 | | IEC Technical Data | | |
| 额定电压 Rated Voltage [V] | | 450 | | |
| 额定电流 Rated Current [A] | | 24 | | |
| 耐电压 Withstanding Voltage [AWG] | | 2000V/1Min | | |
| 导线截面积 Conductor cross section | | 4.0 | | |
| 硬质/柔性导线 Solid/flexible [mm ²] | | | | |
| 材料 Material | | | | |
| 绝缘材料 Insulation Material | | PA66 | | |
| 阻燃等级 Imflammability | | UL94V-0 | | |
| 导体材料 Contactor Material | | 铜合金 Copper alloy | | |
| 导体表面镀层 Contactive Coating | | 镀锡 Sn Plated | | |
| 一般参数 Other Data | | | | |
| 间距 Pitch [mm] | | 8.25 | | |
| 极数 Poles [P] | | 02-24 | | |
| 螺丝 Screw/扭矩 Torque(Max) [N.m] | | M3/0.5 | | |
| 工作温度 Operating temperatur [°C] | | -40~+105 | | |
| 引针尺寸 Pin Dimensions [mm] | | 0.80x1.20 | | |
| PCB板孔径 PCB Hole Diameter [mm] | | 1.70 | | |

DORABO

宁波地博电气有限公司
 Ningbo Dorabo Electric CO., Ltd

NAME:

DBT50-8.25-XXP-C-P



SIZE: A4

mm
inch

REV

T0-1

TYPE: CUSTOMER_DRAWING

SCALE: 1:1

SHEET

1/1

X-ON Electronics

Largest Supplier of Electrical and Electronic Components

Click to view similar products for [Barrier Terminal Blocks](#) category:

Click to view products by [DIBO](#) manufacturer:

Other Similar products are found below :

[CR151D20104](#) [670A-RZ-15-KT20](#) [6C1N03](#) [6PCR-02](#) [6PCR-02-008](#) [6PCR-05-008](#) [6PCR-08-008](#) [6PCR-09-008](#) [6PCR-13-006](#) [6PCR-15-006](#) [6PCR-21-006](#) [6PCV-06-008](#) [6PCV-06-716](#) [6PCV-09-001](#) [6PCV-15-008](#) [6PCV-17-1206](#) [6PCV-20-323](#) [6STR-06-006](#) [6STR-08-006](#) [6STR-12-008](#) [6STR-13-006](#) [6STR-14-008](#) [6STR-16-008](#) [6STR-17-008](#) [6STR-21-008](#) [6STR-25-008](#) [6STR-27-008](#) [6STV-03-008](#) [6STV-04-006](#) [6STV-09-006](#) [6STV-10-006](#) [6WWV-11-008](#) [6WWV-12-008](#) [6WWV-16-008](#) [71106-C](#) [71502-50](#) [71507-47-50](#) [72504-C-50](#) [72506-C](#) [72507-C-50](#) [72508-56](#) [73203](#) [75505-C-50](#) [7C1N08](#) [812-GP-3/4ST-09](#) [812-GPZ-03PSB](#) [8-1437402-5](#) [8-1437402-7](#) [8PCR-06-006](#) [8PCR-11-006](#)