



PLUG-IN LTE
MODEM



Manage this device with
Digi Remote Manager

DIGI CORE PLUG-IN LTE MODEM

Modular LTE connectivity with Carrier Smart Select and dual SIM support across major carriers for optimal mobile network access

Stay connected with Digi CORE® plug-in LTE modems for LTE and LTE-Advanced connectivity across major cellular networks. The modular design integrates with a range of Digi high-performance routers and infrastructure devices, including Digi EX15, Digi IX20, Digi 6310-DX, Digi 6330-MX, Digi 6350-SR, Digi Connect® IT 4 and Digi AnywhereUSB® Plus.

With Digi CORE plug-in modems, enabled Digi devices can connect to mobile networks using the LTE standard that best suits each use case. Larger locations or data-intensive applications can utilize the LTE-Advanced Cat 6 and Cat 11 versions of the Digi CORE plug-in modem to take advantage of faster speeds and carrier aggregation.

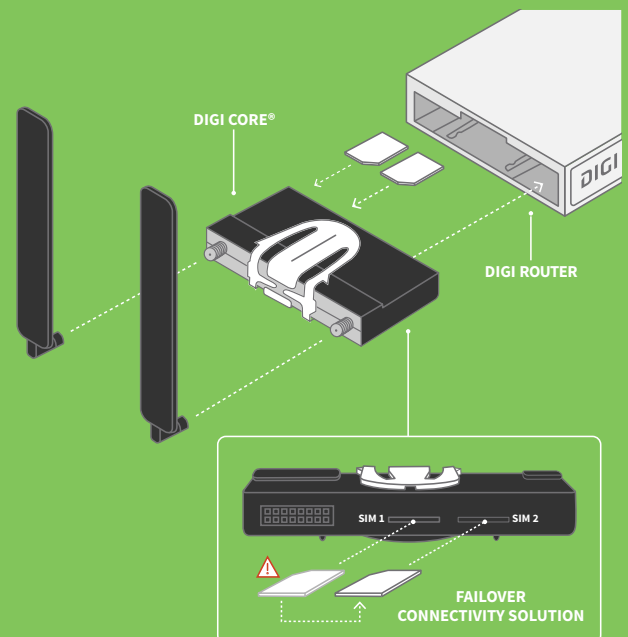
Meanwhile, applications with less intensive needs can opt for the cost-saving deployment of a standard LTE Cat 4 or Cat 3 connection. Select the router and modem that best fit current and future connectivity needs with the ability to upgrade devices rather than replacing them.

Digi Remote Manager® is a secure cloud-based device management solution that provides remote monitoring and control of Digi enterprise routers and gateways after deployment. It enables easy setup, configuration and support for installations of Digi devices.

FEATURES AND BENEFITS

- Certified with major cellular carriers
- Scalable throughput with multiple module types:
 - LTE-Advanced Cat 6 and Cat 11
 - LTE-Cat 4
 - LTE Cat 3 with EVDO fallback (UMTS / HSPA+)
- Dual SIM slots with automatic or manual swapping
- Carrier Smart Select™ for optimal connectivity
- Readily upgrade to meet changing cellular standards
- Tamper-proof optional locking mechanism
- External SMA connectors for custom antenna runs

CORE MODEM DIAGRAM



Digi CORE plug-in LTE modem inserted into a Digi enterprise router.

RELATED PRODUCTS



Digi EX15



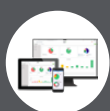
Digi 6310-DX



Digi 6330-MX



Digi IX20



Digi Remote
Manager

SPECIFICATIONS

DIGI CORE® PLUG-IN LTE MODEM

SOFTWARE	
REMOTE MANAGEMENT	Digi Remote Manager®
PROTOCOLS	USB 2.0 / 3.0 (CM module's interface), UMTS, EVDO, HSPA+, LTE, LTE-A (Note: supported cellular protocols vary by module type)
SECURITY	Tamper-proof with internal SIM slots and optional locking mechanism
PHYSICAL	
DIMENSIONS (L x W x H)	102 mm x 51 mm x 15 mm (4.0 in x 2.0 in x 0.6 in)
WEIGHT	0.156 kg (5.5 oz.)
ENVIRONMENTAL	
OPERATING TEMPERATURE	Commercial temperature: 0° C to 40° C (32° F to 104° F)
	Industrial temperature: -40° C to 70° C (-40° F to 158° F)
STORAGE TEMP AND HUMIDITY	-25° C to 75° C (-13° F to 167° F); 5% to 95% non-condensing
APPROVALS	
EMISSIONS / IMMUNITY	FCC Part 15, Subpart B, Class A; CE, RCM; CAN ICES-3(B)/NMB-3(B)
CELLULAR SPECIFICATIONS	
CELLULAR ANTENNA	(2) Dipole; Frequency: 700-960/1575-2700 hz; Gain: 1-4 dBi
SIM	(2) SIM card slot (size 2FF), software selectable and hardware switchable
DIGI CORE PLUG-IN LTE MODEM	
DIGI CORE 1002-CM03 (NORTH AMERICA)	LTE Cat 3; LTE Bands: B2, B4, B5, B13, B17, B25; 3G WCDMA: B1, B2, B4, B5, B8; 3G EVDO: BC0, BC1, BC10; 2G: BC0, BC1, BC10; Transfer rate (max): 100 Mbps down, 50 Mbps up; Commercial temperature
DIGI CORE 1002-CM04 (NORTH AMERICA)	LTE Cat 4; LTE Bands: B2, B4, B5, B12, B13; 3G: B2, B5; Transfer rate (max): 150 Mbps down, 50 Mbps up; Commercial temperature
DIGI CORE 1002-CME4 (EMEA)	LTE Cat 4; LTE Bands: B1, B3, B7, B8, B20; 3G: B1, B8; 2G: B3, B8; Transfer rate (max): 150 Mbps down, 50 Mbps up; Commercial temperature
DIGI CORE 1002-CMG4 (GLOBAL)	LTE Cat 4; LTE Bands: B1, B2, B3, B4, B5, B7, B8, B12, B13, B18, B19, B20, B25, B26, B28, B39, B40, B41; 3G: B1, B2, B4, B5, B6, B8, B19; 2G EDGE / GPRS: 850 / 900 / 1800 / 1900 MHz; Transfer rate (max): 150 Mbps down, 50 Mbps up; Industrial temperature
DIGI CORE 1002-CM06 (GLOBAL EXCLUDING AU, NZ, JP AND KR)	LTE-Advanced Cat 6; LTE Bands: B1, B2, B3, B4, B5, B7, B8, B12, B13, B20, B25, B26, B29, B30, B41; 3G WCDMA: B1, B2, B3, B4, B5, B8; Transfer rate (max): 300 Mbps down, 50 Mbps up; Commercial temperature
DIGI CORE 1002-CM16 (APAC)	LTE-Advanced Cat 6; LTE Bands: B1, B3, B5, B7, B8, B18, B19, B21, B28, B38, B39, B40, B41; 3G WCDMA: B1, B5, B6, B8, B9, B19; 3G TD-SCDMA: B39; Transfer rate (max): 300 Mbps down, 50 Mbps up; Commercial temperature
DIGI CORE 1003-CM11 (GLOBAL)	LTE-Advanced Cat 11; LTE FDD Bands: B1, B2, B3, B4, B5, B7, B8, B12, B13, B17, B20, B25, B26, B28, B29, B30, B66; LTE TDD: B38, B40, B41; 3G: B1, B2, B4, B5, B8; Transfer rate (max): 600 Mbps down, 75 Mbps up; Commercial temperature
WARRANTY	
PRODUCT WARRANTY	3-year

PRODUCT IMAGES

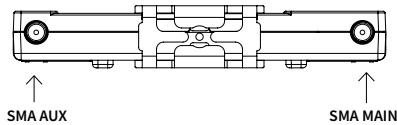
DIGI CORE® PLUG-IN LTE MODEM DUAL SIM



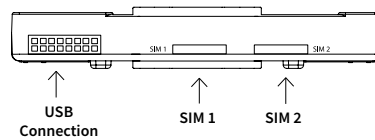
DIGI CORE PLUG-IN LTE MODEM TOP



DIGI CORE PLUG-IN LTE MODEM FRONT



DIGI CORE PLUG-IN LTE MODEM BACK



DIGI REMOTE MANAGER®



CAPABILITIES

- Centralized management of remote devices over 3G/4G/LTE
- Define standard configurations and automatically monitor individual devices for PCI security compliance
- Get alerts and create reports on performance statistics, including connection history, signal quality, latency, data usage and packet loss
- No servers or applications to operate and maintain
- Perform tasks across your entire device network in minutes
- Edit configurations and update firmware for individual devices or groups
- Monitor the status and location of remote devices via a web browser
- Activate or deactivate cellular lines and monitor data to ensure you never incur overage charges

INFRASTRUCTURE

- Hosted in a commercial-grade SAS 70-certified environment
- Superior availability, operating to 99.9% or greater
- Open APIs available to support application development

SECURITY

- Certified SSAE-16 facilities
- Over 175 security controls in place to protect your data
- Enables compliance with security frameworks like PCI, HIPAA, NIST
- Earned SkyHigh's Cloud Trust Program highest rating of Enterprise-Ready

PART NUMBERS	DIGI CORE® PLUG-IN LTE MODEM
ASB-1002-CM03-GLB	Digi CORE plug-In LTE modem; LTE / HSPA+ / EVDO Cat 3; Cellular certifications: PTCRB, AT&T, Verizon, Sprint, T-Mobile
ASB-1002-CM04-OUS	Digi CORE plug-In LTE modem; LTE / HSPA+ Cat 4; Cellular certifications: PTCRB, AT&T, Verizon, Canada
ASB-1002-CME4-OUS	Digi CORE plug-In LTE modem; LTE / HSPA+ Cat 4; Cellular certifications: PTCRB, RED, Europe
1002-CMG4-GLB	Digi CORE plug-In LTE modem; Global LTE Cat 4, 3G/2G fallback; Visit: https://www.digi.com/resources/certifications for latest certifications
ASB-1002-CM06-GLB	Digi CORE plug-In LTE modem; LTE-A / HSPA+ Cat 6; Cellular certifications: PTCRB, RED, AT&T, Verizon, Canada, Europe
ASB-1002-CM16-GLB	Digi CORE plug-In LTE modem; LTE-A / HSPA+ Cat 6; Cellular certifications: Australia / New Zealand
ASB-1003-CM11-GLB	Digi CORE plug-In LTE modem; LTE-A / HSPA+ Cat 11; Cellular certifications: PTCRB, RED, AT&T, Verizon, Canada, Europe

FOR MORE INFORMATION
PLEASE VISIT [DIGI.COM](http://digi.com)

DIGI SERVICE AND SUPPORT / You can purchase with confidence knowing that Digi is always available to serve you with expert technical support and our industry leading warranty. For detailed information visit www.digi.com/support.

© 1996-2020 Digi International Inc. All rights reserved.
All trademarks are the property of their respective owners.

C2/620
91004367

DIGI INTERNATIONAL WORLDWIDE HQ
877-912-3444 / 952-912-3444 / www.digi.com

DIGI INTERNATIONAL JAPAN
+81-3-5428-0261 / www.digi-intl.co.jp

DIGI INTERNATIONAL GERMANY
+49-89-540-428-0

DIGI INTERNATIONAL SINGAPORE
+65-6213-5380

DIGI INTERNATIONAL CHINA
+86-21-50492199 / www.digi.com.cn



X-ON Electronics

Largest Supplier of Electrical and Electronic Components

Click to view similar products for [Modems](#) category:

Click to view products by [Digi International](#) manufacturer:

Other Similar products are found below :

[MT5600SMI-P92](#) [MTQ-L4G1-B02](#) [PL360G55CF-EK](#) [PL360G55CB-EK](#) [ZETA-N-LTE\(EU\)](#) [C-PCM-24S24G-4AV-1](#) [1002-CMF4-OUS](#)
[ASB-1003-CM11-GLB](#) [IX20-0AN4](#) [IX20-W0N4](#) [IX20-WAN4](#) [M113#NFB](#) [E214G#00](#) [E214G#01](#) [M1003GXT00B](#) [MTSMC-L4E1.R1-SP](#)
[MTSMC-L4E1-U.R1-SP](#) [MTSMC-L4N1.R1A-SP](#) [MTSMC-L4N1-U.R1A-SP](#) [DN-24GU](#) [ZN-241G](#) [NOVA-U201](#) [1003824](#) [2313067](#)
[2313656](#) [2313669](#) [2700640](#) [ZETA-N2-GPRS](#) [ASB-1002-CM16-GLB](#) [ASB-1002-CME4-GLB](#) [XM-M92-4P-AA](#) [XM-M92-UP-AA](#) [XM-P91-](#)
[2P-AA](#) [XM-P91-2P-U](#) [XM-P91-UP-AA](#) [XTP9B-PKC-UA](#) [M100G003S](#) [M111F00FS](#) [M113F00FS](#) [M113F002S](#) [M114F002S](#) [MT5692SMI-](#)
[P-34.R1](#) [MTC-G3-B06](#) [MTCM-LNA3-B03-KIT](#) [MTCM-LAT3-B03-KIT](#) [MTD-EV3-N3](#)