



LTE ROUTER
FOR BUSINESS
CONTINUITY



DIGI 6350-SR

Versatile high-performance LTE router for critical networking applications with a dedicated serial port and optional Wi-Fi

Virtually eliminate connectivity downtime with the Digi® 6350-SR LTE router. It's a compact router - an affordable high-performance device that features multiple WAN options for both load balancing and failover. Connect to mobile networks using the 4G LTE standard that best suits your use case. Larger locations or data-intensive applications can utilize the CAT 6 version of the Digi® CORE 1002-CM modem for the fastest cellular speeds available. Or, opt for the cost-saving deployment of a standard CAT 4 connection.

Couple the Digi 6350-SR with a dedicated wireline ISP connection to provide dual ISP connectivity and maximize uptime and performance, with the flexibility to deploy LTE

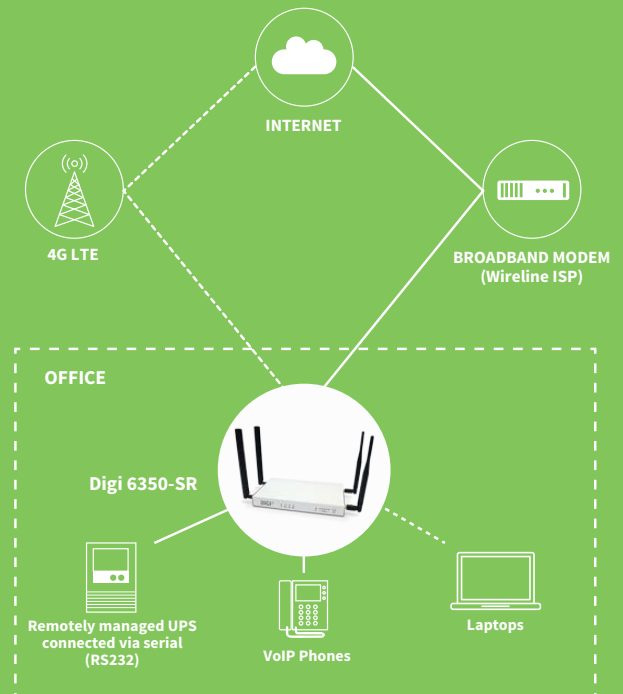
connections whenever you need reliable Internet access. The Digi 6350-SR can help “future-proof” network infrastructure with a stateful firewall and VPN capabilities. Choose from a suite of Digi CORE plug-ins to upgrade without replacing the router.

The Digi centralized management platform provides easy setup, configuration and support for installations of Digi and third-party devices. Digi Remote Manager® and aView™ offer web-based device management solutions to securely monitor and control Digi enterprise routers and gateways -- and the health of your network -- after deployment.

FEATURES AND BENEFITS

- 4G LTE certified Digi CORE 1002-CM plug-in modem
- LTE-Advanced, standard LTE, or LTE with EV-DO fallback
- Upgrade to meet changing cellular standards
- Ethernet WAN port for wireline network access
- Optional high-speed Wi-Fi
- Onboard USB 2.0 port
- Zero-touch provisioning and cloud management
- RS-232 serial port for out-of-band console management

APPLICATION EXAMPLE



RELATED PRODUCTS



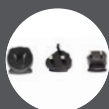
Digi 6310-DX



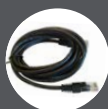
Digi 6330-MX



DIGI CORE
1002-CM



Changeable Power
Supply Plug Tips



Ethernet Cable

SPECIFICATIONS

DIGI 6350-SR AND DIGI CORE 1002-CM

SOFTWARE	
REMOTE MANAGEMENT	Digi aView™ (cloud based); SNMP v1/v2/v3 (support for Digi Remote Manager® 1Q2019)
PROTOCOLS	RIP, RIPng, OSPFv2, OSPFv3, BGP, Babel, IS-IS
SECURITY	AES, 3DES, IKEv1, OpenVPN, MODECFG, X509, SHA1, DES, MD5, RADIUS, TACACS+
PHYSICAL	
DIMENSIONS (L x W x H)	Digi 6350-SR: 9.0 in x 5.0 in x 1.0 in (228 mm x 127 mm x 25 mm); Digi CORE 1002-CM: 4.0 in x 2.0 in x 0.6 in (102 mm x 51 mm x 15 mm)
WEIGHT	Digi 6350-SR: 26 oz. (0.73 kg); Digi CORE 1002-CM: 5.5 oz. (0.156 kg)
STATUS LEDs	Power on, WAN activity, LAN activity, Wi-Fi activity, LTE, 5 Signal, SIM 1 and 2
POWER REQUIREMENTS	
POWER SUPPLY	12V DC, 1.5A; 100-240 AC
OTHER	Changeable power supply plug tips, ethernet cable
ENVIRONMENTAL	
OPERATING TEMPERATURE	0° C to 40° C (32° F to 104° F)
STORAGE TEMP AND HUMIDITY	-13° F to 167° F (-25° C to 75° C); 5% to 95% non-condensing
APPROVALS	
EMISSIONS / IMMUNITY	FCC Part 15, Subpart B, Class A; CE, RCM; CAN ICES-3(B)/NMB-3(B)
CELLULAR SPECIFICATIONS	
CELL ANTENNA	(2) Dipole; Frequency: 700-960/1575-2700 hz; Gain: 1-4 dBi
SIM	(2) SIM card slot (size 2FF), software selectable and hardware switchable
CELLULAR CERTIFICATIONS	AT&T, Sprint, T-Mobile, Verizon, PTCRB
LTE PLUG-IN MODEMS	Digi CORE 1002-CM03 CAT 3 LTE, EVDO, HSPA+, EDGE, GPRS and GSM Digi CORE 1002-CM04* CAT 4 LTE, HSPA+, UMTS Digi CORE 1002-CM06 CAT 6 LTE-A, LTE, HSPA+ Digi CORE 1002-CM16 CAT 6 LET-A, LTE, HSPA+
INTERFACES	
ETHERNET PORTS	(5) 10/100/1000 Base-T Ethernet ports (default 1 WAN, 4 LAN)
WARRANTY	
PRODUCT WARRANTY	3 years

*The Digi CORE 1002-CM04 is not supported on the Sprint Network

PRODUCT IMAGES

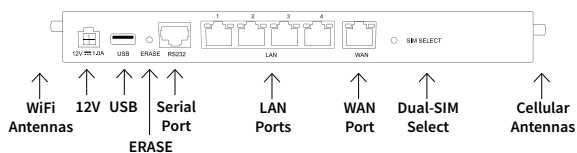
DIGI 6350-SR TOP



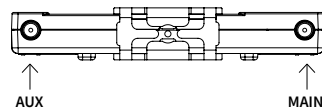
DIGI CORE 1002-CM TOP



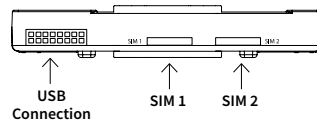
DIGI 6350-SR BACK



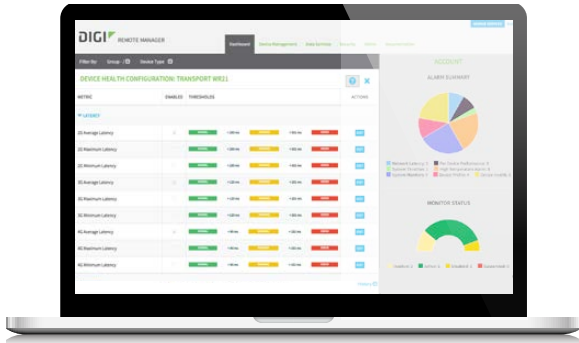
DIGI CORE 1002-CM FRONT



DIGI CORE 1002-CM BACK



DIGI REMOTE MANAGER® (AVIEW™ CLOUD MANAGEMENT AVAILABLE FOR ENTERPRISE ROUTERS)



CAPABILITIES

- Centralized management of remote devices over 3G/4G/LTE
- Define standard configurations and automatically monitor individual devices for PCI security compliance
- Report and alert on performance statistics, including connection history, signal quality, latency, data usage and packet loss
- No servers or applications to operate and maintain
- Complete tasks for your entire device network in minutes
- Edit configurations and update firmware for your individual devices or groups
- Monitor the status and location of your remote device via a web browser
- Active or deactivate cellular lines and monitor data to ensure you never incur overage charges

INFRASTRUCTURE

- Hosted in a commercial-grade SAS 70-certified environment
- Superior availability, operating to 99.9% or greater
- Open APIs available to support application development

SECURITY

- Certified SSAE-16 facilities
- Over 175 Security Controls in place to protect your data
- Enables compliance with security frameworks like PCI, HIPAA, NIST and more
- Earned SkyHigh's Cloud Trust Program highest ranking of Enterprise-Ready

PART NUMBERS	DIGI 6350-SR AND DIGI CORE 1002-CM
ASN-6350-SR03-GLB	Digi 6350-SR03 LTE router; 5 port GigE; 1 serial port; 1 USB port; Wi-Fi; CAT 3; LTE / HSPA+ / EV-DO; Cellular certifications: Verizon, AT&T, Sprint, T-Mobile, PTCRB
ASB-6355-SR03-GLB	Digi 6355-SR03 LTE router; 5 port GigE; 1 serial port; 1 USB port; Without Wi-Fi; CAT 3; LTE / HSPA+ / EV-DO; Cellular certifications: Verizon, AT&T, Sprint, T-Mobile, PTCRB
ASN-6350-SR04-GLB	Digi 6350-SR04 LTE router; 5 port GigE; 1 serial port; 1 USB port; Wi-Fi; CAT 4; LTE / HSPA+; Cellular certifications: Verizon, AT&T, T-Mobile, PTCRB
ASB-6355-SR04-GLB	Digi 6355-SR04 LTE router; 5 port GigE; 1 serial port; 1 USB port; Without Wi-Fi; CAT 4; LTE / HSPA+; Cellular certifications: Verizon, AT&T, T-Mobile, PTCRB
ASN-6350-SR06-GLB	Digi 6350-SR06 LTE router; 5 port GigE; 1 serial port; 1 USB port; Wi-Fi; CAT 6; LTE-A / HSPA+; Cellular certifications: Verizon, AT&T, Sprint, T-Mobile, PTCRB; Certified countries / regions: European Union, European Economic Area and Switzerland
ASB-6355-SR06-GLB	Digi 6355-SR06 LTE router; 5 port GigE; 1 serial port; 1 USB port; Without Wi-Fi; CAT 6; LTE-A / HSPA+; Cellular certifications: Verizon, AT&T, Sprint, T-Mobile, PTCRB; Certified countries / regions: European Union, European Economic Area and Switzerland
ASB-1002-CM03-GLB	Digi CORE 1002-CM plug-In LTE modem; CAT 3; LTE / HSPA+ / EV-DO, cellular certifications: Verizon, AT&T, Sprint, T-Mobile, PTCRB
ASB-1002-CM04-OUS	Digi CORE 1002-CM plug-In LTE modem; CAT 4; LTE / HSPA+, cellular certifications: Verizon, AT&T, T-Mobile, PTCRB
ASB-1002-CM06-GLB	Digi CORE 1002-CM plug-In LTE modem; CAT 6; LTE-A / HSPA+, cellular certifications: Verizon, AT&T, Sprint, T-Mobile, PTCRB
ASB-1002-CM16-GLB	Digi CORE 1002-CM plug-In LTE modem; CAT 6; LTE-A / HSPA+; Cellular certifications: Australia / New Zealand

PART NUMBERS	ACCESSORIES
450048	Digi 635x-SR and 5400-RM universal switching power supply unit (PSU), AC100-240V, 50/60 Hz, MPN B113-150080-I, PSU, 12VDC, 1.5A SMPS wall mount 4PIN molex connector with USA plug option fitted (replacement)
500157	Cable assembly passive POE power injector for Digi 633x-MX and Digi EX15, white 2.1mm barrel connector (replacement)
170010	(1) Wi-Fi antenna for Digi 6355-SR (replacement)
170011	(1) Antenna extender: 48 mm circle antenna magnetic base (base connector: SMA jack; Cable: Low loss CLF; Length: 50 cm with SMA plug (optional)
170012	(1) Cellular antenna (black) for Digi 5400-RM, 6300-CX, 6310-DX, 633x-MX, 635x-SR and AT&T VPN devices (replacement part)

DIGI SERVICE AND SUPPORT / You can purchase with confidence knowing that Digi is always available to serve you with expert technical support and our industry leading warranty. For detailed information visit www.digi.com/support.

© 1996-2018 Digi International Inc. All rights reserved.
All trademarks are the property of their respective owners.

DIGI INTERNATIONAL WORLDWIDE HQ
877-912-3444 / 952-912-3444 / www.digi.com

DIGI INTERNATIONAL JAPAN
+81-3-5428-0261 / www.digi-intl.co.jp

DIGI INTERNATIONAL GERMANY
+49-89-540-428-0

DIGI INTERNATIONAL SINGAPORE
+65-6213-5380

DIGI INTERNATIONAL CHINA
+86-21-50492199 / www.digi.com.cn

X-ON Electronics

Largest Supplier of Electrical and Electronic Components

Click to view similar products for [Ethernet Cables / Networking Cables](#) category:

Click to view products by [Digi International](#) manufacturer:

Other Similar products are found below :

[73-6670-7](#) [73-6680-15](#) [73-7797-25](#) [MCJB2-10P6Q7-120](#) [84909-0204](#) [1200700174](#) [1200860368](#) [E16A06002M030](#) [E200102-009-S1](#)
[AX105346-EW](#) [MT14-187L](#) [17-103530](#) [ERWPAB3002M005](#) [190-038045-01](#) [NK5EPC18RDY](#) [NK5EPC18VLY](#) [NK5EPC18YLY](#)
[NK5EPC1GRY](#) [NK5EPC4Y](#) [NK5EPC6YLY](#) [NK5EPC8BLY](#) [NK5EPC9YLY](#) [1969343-6](#) [C501100010](#) [C501106002](#) [C501106007](#)
[C501106015](#) [C501106025](#) [C601102010](#) [C601104010](#) [C601106007](#) [C601106015](#) [2142758-2](#) [2168427-2](#) [CAT1106007](#) [SR02P0-26E5-15.0](#)
[SR02S0-26E5-15.0](#) [21949-1](#) [2J1866A](#) [RJF SFTP 5E 0500](#) [AX100351](#) [MN14CEC/ST](#) [C501100015](#) [C501106004](#) [C501106010](#) [C5F1108007](#)
[C601104004](#) [C601106004](#) [CA21106004](#) [CA21106010](#)