

SPECIFICATION FOR REFERENCE

REFERENCE SIGNATURE
DATE :

CUSTOMER : DIGI **PART NO :** _____

DESCRIPTION : DC to DC 12Watt Converter

PLEASE SIGN AND RETURN ONE COPY.

**ALL PRODUCTION UNITS WILL BE BUILT ACCORDING
TO THIS SPECIFICATIONS.**

MODEL NO: EDD0121-12 **Rev. A**

AGENCY APPROVAL: UL/cUL

PRESENTED BY: JACKY CHANG

CHECKED BY: JOHNSON LIN

APPROVED BY: MICHAEL CHEN

DATE : 1/27/2006

27F, NO.183, HSIN TAI WU ROAD SEC.1, HSIH-JR CITY, TAIPEI HSIEN, TAIWAN.

TEL# (886)2-2642-4205
WEBSITE: www.bobbintron.com

FAX# (886)2-2642-3654
EMAIL: sales@bobbintron.com

3.4 Transient response : output return within $\pm 10\%$ tolerance of nominal voltage within 1m sec.
for 50% load change, 120Hz 50% duty cycle.

3.5 Over voltage protection : 15V reference with output Zener Diode.

3.6 Short circuit protection : protection against short circuit for output

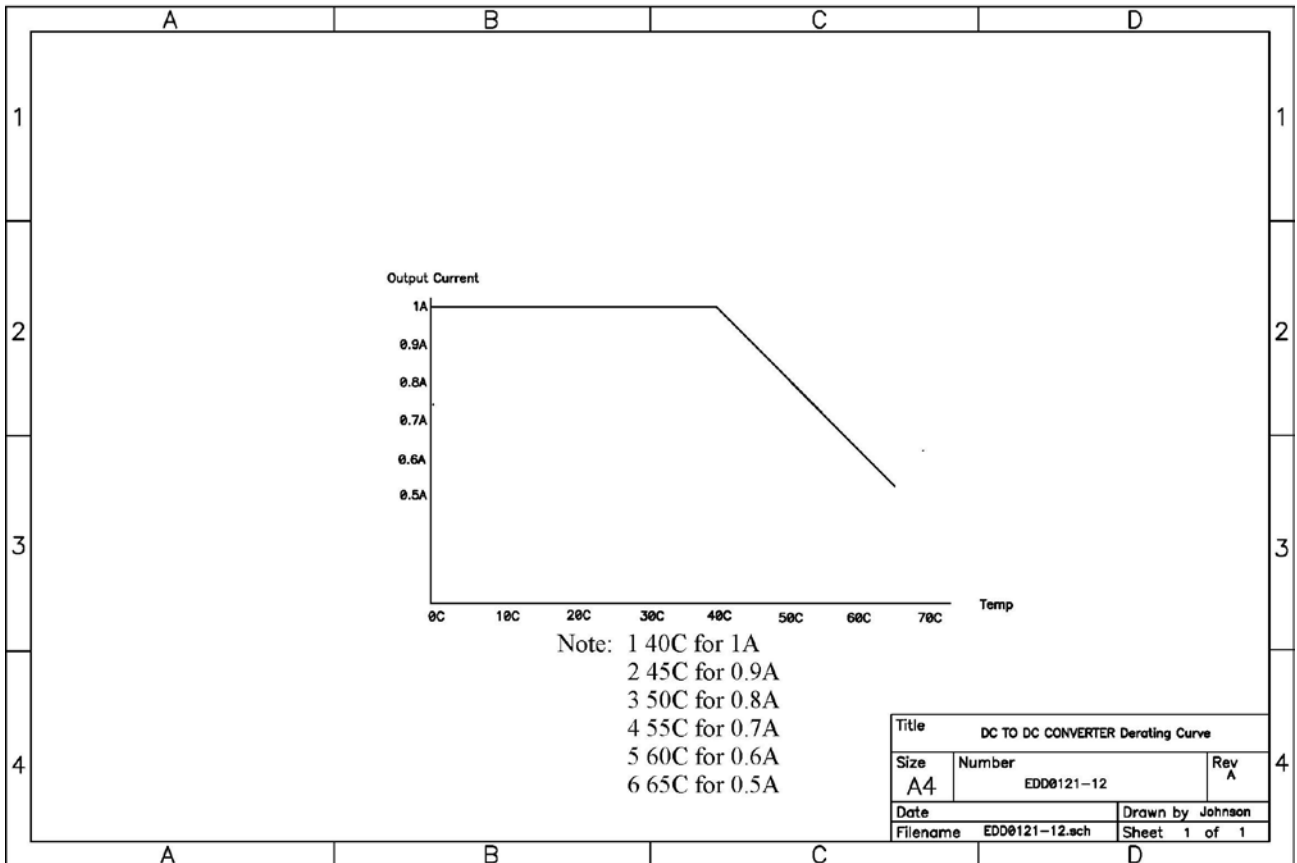
3.6.1 (1) Any protect condition shall cause no damage and no component fail.
(2) Automatic recovery when removal of protect condition.

3.7 Temperature coefficient : 0.2% per $^{\circ}\text{C}$ maximum over entire operating temperature range

4. Environmental :

4.1 Operating temperature : 0°C to 40°C

4.1.1 Derating Curve



4.2 Storage temperature : -20°C to 80°C

4.3 Operating relative humidity : 10% to 85%

4.4 Storage relative humidity : 5% to 95%

**5. Safety requirement :(Meet) (1) UL 60950
(2) cUL / CSA 22.2, NO. 60950**

6. EMI requirement : CISPR EN55022 class B rules.

7. Hi-pot test :

7.1 Primary to secondary : 2121VDC or 1500VAC for 1 sec. 10mA

9. Reliability

**9.1 MTBF : 100K hours min.
@ full load at 25°C ambient temperature.**

9.2 Vibration : Frequency range : 5-200Hz.

Vibration amplitude 0.5g ±10% over entire frequency range.

A complete sweep of the frequencies from 5-200Hz at 0.4 decades per mins. duration, if insufficient resonant point are established to provide for 30 minutes input per axis, then a constant acceleration continuous sweep at one octave per minute (0.3 decade / min.) shall be applied for the duration.

**9.3 Altitude : will operate properly at any
altitude between 0 to 10000ft.**

X-ON Electronics

Largest Supplier of Electrical and Electronic Components

Click to view similar products for [Switching Power Supplies](#) category:

Click to view products by [Digi International](#) manufacturer:

Other Similar products are found below :

[70841011](#) [73-551-0005](#) [AAD600S-4-OP](#) [R22095](#) [HWS50A-5/RA](#) [KD0204](#) [9021](#) [S-15F-12](#) [LDIN100150](#) [LPM000-BBAR-01](#) [LPX17S-C](#)
[EVS57-10R6/R](#) [FDC40-24S12](#) [FP80](#) [FRV7000G](#) [22929](#) [CQM1IA121](#) [40370121900](#) [VI-PU22-EXX](#) [40370121910](#) [LDIN5075](#)
[432703037161](#) [WRB01X-U](#) [LPX140-C](#) [08-30466-1040G](#) [09-160CFG](#) [70841004](#) [70841025](#) [VPX3000-CBL-DC](#) [LPM000-BBAR-05](#)
[LPM000-BBAR-08](#) [LPM124-OUTA1-48](#) [LPM000-BBAR-07](#) [LPM109-OUTA1-10](#) [LPM616-CHAS](#) [08-30466-1055G](#) [08-30466-2175G](#)
[DMB-EWG](#) [TVQF-1219-18S](#) [6504-226-2101](#) [CQM1IPS01](#) [XPFM201A+](#) [MAP80-4000G](#) [LFP300F-24-TY](#) [SMP21-L20-DC24V-5A](#) [VI-](#)
[MUL-ES](#) [08-30466-0065G](#) [CME240P-24](#) [VI-RU031-EWWX](#) [08-30466-0028G](#)