



LTE ROUTER  
FOR BUSINESS  
CONTINUITY



# DIGI 6330-MX

High-performance LTE router with Gigabit Ethernet and optional Wi-Fi connectivity for standard or co-located deployments

Digi® 6330-MX LTE routers offer Gigabit Ethernet and Wi-Fi connectivity in a compact package to businesses that rely on network uptime to avoid negative impact on their revenue streams and reputation. The Digi suite of upgradeable CORE 1002-CM plug-in LTE modems lets users choose the cellular connectivity speeds that best fit their business requirements, with LTE-Advanced for more data-intensive applications or standard LTE for traditional day-to-day operations.

The Digi 6330-MX router can shield network infrastructure for mobile kiosks, digital signage and POS systems far into the future based on its stateful firewall and VPN capabilities.

Pair Digi 6330-MX with a dedicated wire line connection to ensure dual ISP connectivity, maximum uptime and complete business continuity for retailers and other organizations that demand uninterrupted network access and availability.

The Digi centralized management platform provides easy setup, configuration and support for installations of Digi and third-party devices. Digi Remote Manager® and aView™ offer web-based device management solutions to securely monitor and control Digi enterprise routers and gateways -- and the health of your network -- after deployment.

## FEATURES AND BENEFITS

- 4G LTE certified Digi CORE 1002-CM plug-in modem
- LTE-Advanced, standard LTE, or LTE with EV-DO fallback
- Easily upgrade to meet changing cellular standards
- Optional Wi-Fi
- Remote mounting kit for site survey and PoE installation
- Ethernet WAN port for wireline network access
- Zero-touch provisioning and cloud management
- Onboard USB 2.0 port

## INCLUDED COMPONENTS



Digi 6330-MX



Digi CORE 1002-CM



Remote Mounting Kit (Optional)

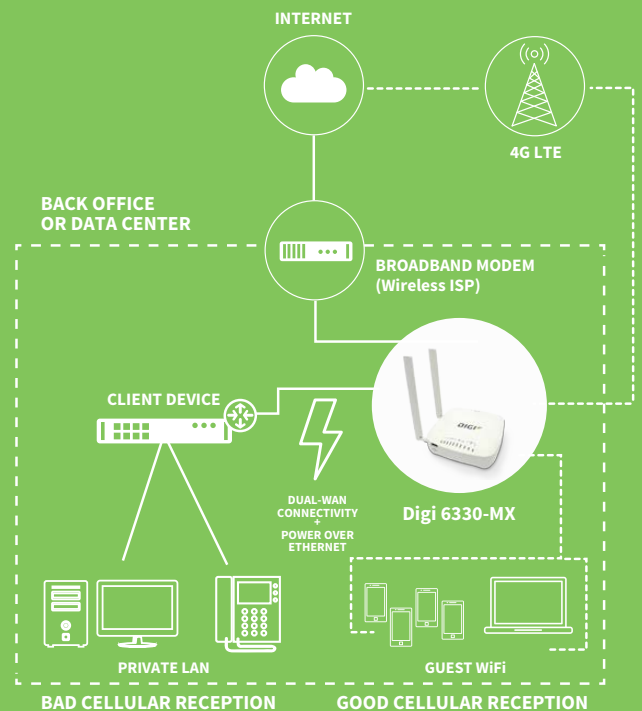


Digi PoE Injector



Battery Backup

## APPLICATION EXAMPLE



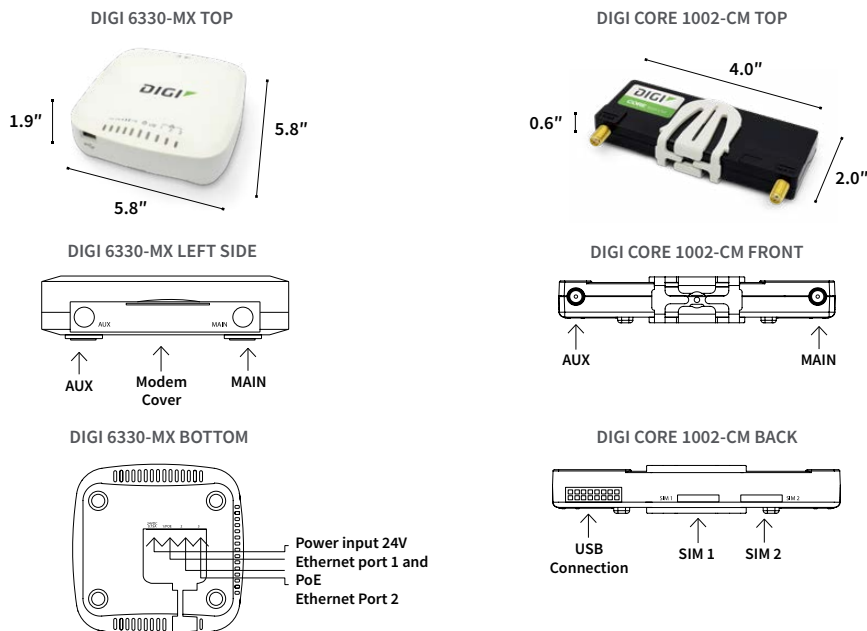
## SPECIFICATIONS

## DIGI 6330-MX AND DIGI CORE 1002-CM

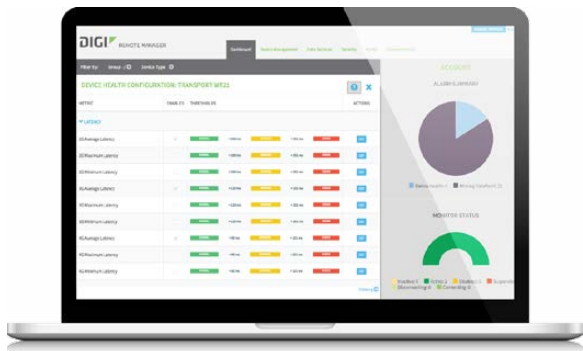
<b>SOFTWARE</b>	
<b>REMOTE MANAGEMENT</b>	Digi aView™ (cloud based); SNMP v1/v2/v3 (support for Digi Remote Manager® 1Q2019)
<b>PROTOCOLS</b>	RIP, RIPng, OSPFv2, OSPFv3, BGP, Babel, IS-IS
<b>SECURITY</b>	AES, 3DES, IKEv1, OpenVPN, MODECFG, X509, SHA1, DES, MD5, RADIUS, TACACS+
<b>PHYSICAL</b>	
<b>DIMENSIONS (L x W x H)</b>	Digi 6330-MX: 5.8 in x 5.8 in x 1.9 in (148 mm x 148 mm x 48 mm); Digi CORE 1002-CM: 4.0 in x 2.0 in x 0.6 in (102 mm x 51mm x 15 mm)
<b>WEIGHT</b>	Digi 6330-MX: 10 oz. (0.29 kg); Digi CORE 1002-CM: 5.5 oz. (0.156 kg)
<b>STATUS LEDs</b>	Power on, Ethernet port activity, LTE, 5 Signal, SIM 1 and 2
<b>POWER REQUIREMENTS</b>	
<b>POWER SUPPLY</b>	24V DC, 0.75A; 100-240 AC
<b>OTHER</b>	Remote mounting kit, PoE injector and battery backup
<b>ENVIRONMENTAL</b>	
<b>OPERATING TEMPERATURE</b>	0° C to 40° C (32° F to 104° F)
<b>STORAGE TEMP AND HUMIDITY</b>	-13° F to 167° F (-25° C to 75° C); 5% to 95% non-condensing
<b>APPROVALS</b>	
<b>EMISSIONS / IMMUNITY</b>	FCC Part 15, Subpart B, Class A; CE, RCM; CAN ICES-3(B)/NMB-3(B)
<b>CELLULAR SPECIFICATIONS</b>	
<b>CELL ANTENNA</b>	(2) Dipole; Frequency: 700-960/1575-2700 hz; Gain: 1-4 dBi;
<b>SIM</b>	(2) SIM card slot (size 2FF), software selectable and hardware switchable
<b>CELLULAR CERTIFICATIONS</b>	AT&T, Sprint, T-Mobile, Verizon and PTCRB
<b>LTE PLUG-IN MODEMS</b>	Digi CORE 1002-CM03 CAT 3 LTE, EVDO, HSPA+, EDGE, GPRS and GSM Digi CORE 1002-CM04* CAT 4 LTE, HSPA+, UMTS Digi CORE 1002-CM06 CAT 6 LTE-A, LTE, HSPA+ Digi CORE 1002-CM16 CAT 6 LET-A, LTE, HSPA+
<b>INTERFACES</b>	
<b>ETHERNET PORTS</b>	(3) 10/100/1000 Base-T Ethernet port
<b>WARRANTY</b>	
<b>PRODUCT WARRANTY</b>	3 years

\*The Digi CORE 1002-CM04 is not supported on the Sprint Network

## PRODUCT IMAGES



# DIGI REMOTE MANAGER® (AVIEW™ CLOUD MANAGEMENT AVAILABLE FOR ENTERPRISE ROUTERS)



## CAPABILITIES

- Centralized management of remote devices over 3G/4G/LTE
- Define standard configurations and automatically monitor individual devices for PCI security compliance
- Report and alert on performance statistics, including connection history, signal quality, latency, data usage and packet loss
- No servers or applications to operate and maintain
- Complete tasks for your entire device network in minutes
- Edit configurations and update firmware for your individual devices or groups
- Monitor the status and location of your remote device via a web browser
- Active or deactivate cellular lines and monitor data to ensure you never incur overage charges

## INFRASTRUCTURE

- Hosted in a commercial-grade SAS 70-certified environment
- Superior availability, operating to 99.9% or greater
- Open APIs available to support application development

## SECURITY

- Certified SSAE-16 facilities
- Over 175 Security Controls in place to protect your data
- Enables compliance with security frameworks like PCI, HIPAA, NIST and more
- Earned SkyHigh's Cloud Trust Program highest ranking of Enterprise-Ready

PART NUMBERS	DIGI 6330-MX AND DIGI CORE 1002-CM
ASB-6330-MX03-OUS	Digi 6330-MX03 LTE router; 3 port GigE; 1 USB port; Wi-Fi; CAT 3; LTE / HSPA+ / EV-DO; Cellular certifications: Verizon, AT&T, Sprint, T-Mobile, PTCRB
ASB-6335-MX03-OUS	Digi 6335-MX03 LTE router; 3 port GigE; 1 USB port; Without Wi-Fi; CAT 3; LTE / HSPA+ / EV-DO; Cellular certifications: Verizon, AT&T, Sprint, T-Mobile, PTCRB
ASB-6330-MX04-OUS	Digi 6330-MX04 LTE router; 3 port GigE; 1 USB port; Wi-Fi; CAT 4; LTE / HSPA+; Cellular certifications: Verizon, AT&T, T-Mobile, PTCRB
ASB-6335-MX04-OUS	Digi 6335-MX04 LTE router; 3 port GigE; 1 USB port; Without Wi-Fi; CAT 4; LTE / HSPA+; Cellular certifications: Verizon, AT&T, T-Mobile, PTCRB
ASB-6330-MX06-OUS	Digi 6330-MX06 LTE router; 3 port GigE; 1 USB port; Wi-Fi; CAT 6; LTE-A / HSPA+; Cellular certifications: Verizon, AT&T, Sprint; T-Mobile, PTCRB
ASB-6335-MX06-OUS	Digi 6335-MX06 LTE Router; 3 port GigE; 1 USB port; Without Wi-Fi; CAT 6; LTE-A / HSPA+; Cellular certifications: Verizon, AT&T, Sprint, T-Mobile, PTCRB
ASB-6330-MX06-GLB	Digi 6330-MX06 LTE router; 3 port GigE; 1 USB port; Wi-Fi; CAT 6; LTE-A / HSPA+; Cellular certifications: Europe; Includes non-US power plug types
ASB-6335-MX06-GLB	Digi 6335-MX06 LTE Router; 3 port GigE; 1 USB port; Without Wi-Fi; CAT 6; LTE-A / HSPA+; Cellular certifications: Europe; Includes non-US power plug types
ASB-1002-CM03-GLB	Digi CORE plug-In LTE modem; CAT 3; LTE / HSPA+ / EV-DO, Cellular certifications: Verizon, AT&T, Sprint, T-Mobile, PTCRB
ASB-1002-CM04-OUS	Digi CORE plug-In LTE modem; CAT 4; LTE / HSPA+, Cellular certifications: Verizon, AT&T, T-Mobile, PTCRB
ASB-1002-CM06-GLB	Digi CORE plug-In LTE modem; CAT 6; LTE-A / HSPA+, Cellular certifications: Verizon, AT&T, Sprint, T-Mobile, PTCRB
ASB-1002-CM16-GLB	Digi CORE 1002-CM plug-In LTE modem; CAT 6; LTE-A / HSPA+; Cellular certifications: Australia / New Zealand

PART NUMBERS	ACCESSORIES
450061	18V PSU power supply for 6310-DX, 633x-MX and EX15 with Barrel Jack connector (replacement)
500157	Cable assembly passive POE power injector for Digi 633x-MX and Digi EX15, white 2.1mm barrel connector (replacement)
560083	Temporary battery pack for Digi 633x-MX and 6310-DX, 9V with 6" power lead, 2.1 barrel connector (replacement)
170011	(1) Antenna extender: 48 mm circle antenna magnetic base (base connector: SMA jack; Cable: Low loss CLF; Length: 50 cm with SMA plug)
170012	(1) Cellular antenna (black) for Digi 5400-RM, 6300-CX, 6310-DX, 633x-MX, 635x-SR and AT&T VPN devices (replacement part)

**DIGI SERVICE AND SUPPORT** / You can purchase with confidence knowing that Digi is always available to serve you with expert technical support and our industry leading warranty. For detailed information visit [www.digi.com/support](http://www.digi.com/support).

© 1996-2018 Digi International Inc. All rights reserved.  
All trademarks are the property of their respective owners.

**DIGI INTERNATIONAL WORLDWIDE HQ**  
877-912-3444 / 952-912-3444 / [www.digi.com](http://www.digi.com)

**DIGI INTERNATIONAL JAPAN**  
+81-3-5428-0261 / [www.digi-intl.co.jp](http://www.digi-intl.co.jp)

**DIGI INTERNATIONAL GERMANY**  
+49-89-540-428-0

**DIGI INTERNATIONAL SINGAPORE**  
+65-6213-5380

**DIGI INTERNATIONAL CHINA**  
+86-21-50492199 / [www.digi.com.cn](http://www.digi.com.cn)

## X-ON Electronics

Largest Supplier of Electrical and Electronic Components

*Click to view similar products for [Modems](#) category:*

*Click to view products by [Digi International](#) manufacturer:*

Other Similar products are found below :

[MT5600SMI-P92](#) [MTQ-L4G1-B02](#) [PL360G55CF-EK](#) [PL360G55CB-EK](#) [ZETA-N-LTE\(EU\)](#) [C-PCM-24S24G-4AV-1](#) [1002-CMF4-OUS](#)  
[ASB-1003-CM11-GLB](#) [IX20-0AN4](#) [IX20-W0N4](#) [IX20-WAN4](#) [M113#NFB](#) [E214G#00](#) [E214G#01](#) [M1003GXT00B](#) [MTSMC-L4E1.R1-SP](#)  
[MTSMC-L4E1-U.R1-SP](#) [MTSMC-L4N1.R1A-SP](#) [MTSMC-L4N1-U.R1A-SP](#) [DN-24GU](#) [ZN-241G](#) [NOVA-U201](#) [1003824](#) [2313067](#)  
[2313656](#) [2313669](#) [2700640](#) [ZETA-N2-GPRS](#) [ASB-1002-CM16-GLB](#) [ASB-1002-CME4-GLB](#) [XM-M92-4P-AA](#) [XM-M92-UP-AA](#) [XM-P91-](#)  
[2P-AA](#) [XM-P91-2P-U](#) [XM-P91-UP-AA](#) [XTP9B-PKC-UA](#) [M100G003S](#) [M111F00FS](#) [M113F00FS](#) [M113F002S](#) [M114F002S](#) [MT5692SMI-](#)  
[P-34.R1](#) [MTC-G3-B06](#) [MTCM-LNA3-B03-KIT](#) [MTCM-LAT3-B03-KIT](#) [MTD-EV3-N3](#)