



LTE CELLULAR
EXTENDER
FOR BUSINESS
CONTINUITY



DIGI 6300-CX

Improve business continuity with Digi LTE cellular extenders

The Digi® 6300-CX LTE cellular extender can help eliminate downtime by functioning as either the primary or backup cellular connection. It comes with a carrier-certified embedded cellular modem, for both 3G and 4G LTE with EV-DO fallback. Compatible with any dual-WAN networking appliance, this compact high-performance device achieves more reliable connectivity with your existing equipment.

Deployments are streamlined due to the installation accessories – a disposable battery pack for site survey, PoE injector for optimizing placement for best cellular reception, a mounting bracket -- everything you need for a quick and

easy install. Ensure maximum uptime and performance with the flexibility to deploy solutions wherever you need connectivity at a lower cost than traditional Internet connections.

The Digi centralized management platform provides easy setup, configuration and support for installations of Digi and third-party devices. Digi Remote Manager® and aView™ offer web-based device management solutions to securely monitor and control Digi enterprise routers and gateways -- and the health of your network -- after deployment.

FEATURES AND BENEFITS

- LTE certified embedded cellular modem
- LTE with EV-DO fallback
- Low cost connectivity to any Ethernet device
- Battery pack for site survey to identify optimal mounting location
- Remote mounting kit for quick and easy installation
- Automatic cellular carrier detection with Carrier Smart Select
- Zero-touch provisioning with cloud management
- Compact size (4.3 in x 4.3 in x 1 in)

INCLUDED COMPONENTS



Antennas



Power Supply



Temporary
Battery

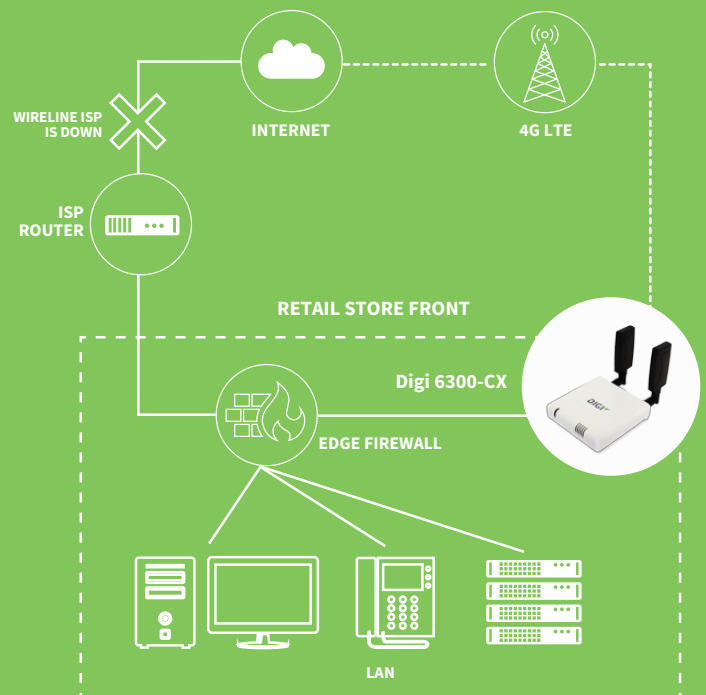


Ethernet Cable



PoE Injector
Cable

APPLICATION EXAMPLE



SPECIFICATIONS

DIGI 6300-CX

SOFTWARE

REMOTE MANAGEMENT Digi aView™ (cloud based); SNMP v1/v2/v3 (support for Digi Remote Manager® 1Q2019)

PROTOCOLS RIP, RIPng, OSPFv2, OSPFv3, BGP, Babel, IS-IS

SECURITY AES, 3DES, IKEv1, OpenVPN, MODECFG, X509, SHA1, DES, MD5, RADIUS, TACACS+

PHYSICAL

DIMENSIONS (L x W x H) 109 mm x 109 mm x 25 mm (4.3 in x 4.3 in x 1.0 in)

WEIGHT 0.21 kg (7.5 oz)

STATUS LEDs (1) Power on / cell type, (5) signal cellular strength

POWER REQUIREMENTS

POWER SUPPLY 15V DC, 800mA; 100-240 AC

OTHER Remote mounting kit, PoE injector and disposable battery for site survey

ENVIRONMENTAL

OPERATING TEMPERATURE 0 °C to 40 °C (32 °F to 104 °F)

STORAGE TEMP AND HUMIDITY -25 °C to 75 °C (-13 °F to 167 °F); 5% to 95% non-condensing

APPROVALS

EMISSIONS / IMMUNITY FCC Part 15, Subpart B, Class B; CE, C-Tick/RCM; CAN ICES-3(B)/NMB-3(B)

CELLULAR SPECIFICATIONS

CELLULAR TYPE 6300-CX02 / 6300-CX03: CAT 3 LTE, EVDO, HSPA+, EDGE, GPRS and GSM; Digi 6300-CX05: CAT 6 LTE-A

CELL ANTENNA (2) Dipole; Frequency: 700-960/1575-2700 hz; Gain: 1-4 dBi

SIM (1) SIM card slot (size 2FF)

CELLULAR CERTIFICATIONS PTCRB, Verizon, AT&T, Bell Canada, T-Mobile (North American SKUs); GCF (EU SKU); Telstra (AU / NZ)

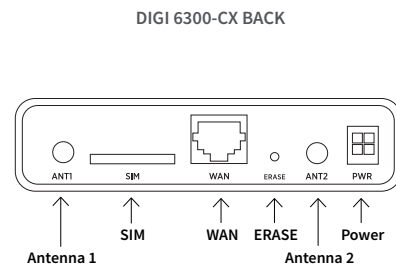
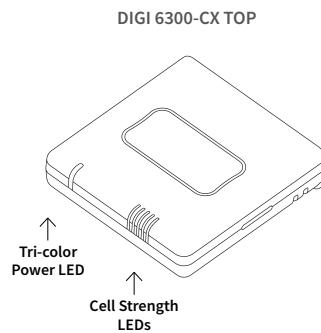
INTERFACES

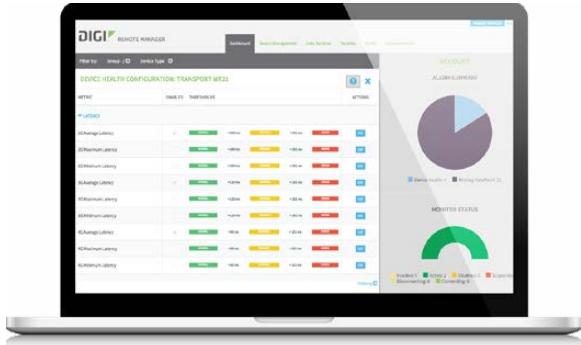
ETHERNET PORTS (1) 10/100 Base-T Ethernet port

WARRANTY

PRODUCT WARRANTY 3 years

PRODUCT IMAGES





CAPABILITIES

- Centralized management of remote devices over 3G/4G/LTE
- Define standard configurations and automatically monitor individual devices for PCI security compliance
- Report and alert on performance statistics, including connection history, signal quality, latency, data usage and packet loss
- No servers or applications to operate and maintain
- Complete tasks for your entire device network in minutes
- Edit configurations and update firmware for your individual devices or groups
- Monitor the status and location of your remote device via a web browser
- Active or deactivate cellular lines and monitor data to ensure you never incur overage charges

INFRASTRUCTURE

- Hosted in a commercial-grade SAS 70-certified environment
- Superior availability, operating to 99.9% or greater
- Open APIs available to support application development

SECURITY

- Certified SSAE-16 facilities
- Over 175 Security Controls in place to protect your data
- Enables compliance with security frameworks like PCI, HIPAA, NIST and more
- Earned SkyHigh's Cloud Trust Program highest ranking of Enterprise-Ready

PART NUMBERS	DIGI 6300-CX
ASB-6300-CX02-OUS	Digi 6300-CX LTE cellular extender: LTE / HSPA+ / EV-DO; Cellular certifications: Verizon, AT&T, Sprint, T-Mobile, PTCRB; US power supply
ASB-6300-CX03-GLB	Digi 6300-CX LTE cellular extender: LTE / HSPA+; Certified countries / regions: European Union, European Economic Area, Switzerland and South Africa; Global power supply with AU, Euro, UK and US interchangeable plug tips
ASB-6300-CX05-GLB	Digi 6300-CX LTE cellular extender: LTE-A; Certified countries: Australia and New Zealand

PART NUMBERS	COMPONENTS
170012	(1) Cellular antenna (black) for Digi 5400-RM, 6300-CX, 6310-DX, 633x-MX, 635x-SR and AT&T VPN devices (replacement part)
560069	Digi 6300-CX temporary site survey battery pack, 9V with 6" power lead, 4 PIN Molex connector (replacement part)
170011	(1) Antenna extender: 48 mm circle antenna magnetic base (base connector: SMA jack; Cable: Low loss CLF; Length: 50 cm with SMA plug (optional)
450052	Digi 6300-CX power supply unit (PSU), 15V DC, THIS PSU WILL HARM A 5400-RM, MPN B113-150080-I*, PSU 800mA SMPS wallmount 4PIN MOLEX CONNECTOR UNIVERSAL with USA plug option fitted**. White box 96 mm x 44 mm x 65 mm (replacement part)

*For Digi 6300-CX only
 **15VDC

FOR MORE INFORMATION
PLEASE VISIT DIGI.COM

DIGI SERVICE AND SUPPORT / You can purchase with confidence knowing that Digi is always available to serve you with expert technical support and our industry leading warranty. For detailed information visit www.digi.com/support.

© 1996-2018 Digi International Inc. All rights reserved.
 All trademarks are the property of their respective owners.

DIGI INTERNATIONAL WORLDWIDE HQ
 877-912-3444 / 952-912-3444 / www.digi.com

DIGI INTERNATIONAL JAPAN
 +81-3-5428-0261 / www.digi-intl.co.jp

DIGI INTERNATIONAL GERMANY
 +49-89-540-428-0

DIGI INTERNATIONAL SINGAPORE
 +65-6213-5380

DIGI INTERNATIONAL CHINA
 +86-21-50492199 / www.digi.com.cn



X-ON Electronics

Largest Supplier of Electrical and Electronic Components

Click to view similar products for [Routers category](#):

Click to view products by [Digi International manufacturer](#):

Other Similar products are found below :

[LR54-AA401](#) [WR44-L900-AE1-RF](#) [WR31-U92A-DE1-TB](#) [SR30500020-SWH](#) [SR30510120](#) [SR30508010](#) [SR30500410](#) [UR2B612011](#)
[UR2L610011-SWH](#) [UR2L610710](#) [BB-ERT311](#) [BB-UR2B610011](#) [BB-UR2B610021](#) [SL30210110-SWH](#) [SL30210110-XSWH](#) [SR30010110-](#)
[SWH](#) [SR30510420-SWH](#) [SR30500420-SWH](#) [SR30518120-SWH](#) [XR2F000711](#) [ASB-631R-DX06-OUS](#) [TX64-A121](#) [X2E-Z1R-E1-W](#) [X2E-](#)
[Z1R-W1-W](#) [X2E-Z1R-E1-A](#) [E224HPL2S](#) [1153078](#) [1153079](#) [2702529](#) [RUT24006E000](#) [RUT950U022C0](#) [RUTX09000000](#) [RUTX11000000](#)
[FS-BENG-C](#) [FS-Router-BAC2](#) [IX14-M601](#) [RUT300000000](#) [RUT360000000](#) [RUT950V022C0](#) [RUT950K02400](#) [RUT950U025A0](#)
[RUT955M036V0](#) [RUT955T033B0](#) [RUT955J034S0](#) [RUT955M03690](#) [RUT955T03530](#) [RUTX12000000](#) [WR11-C100-DE1-SU](#) [WR21-L82B-](#)
[DE1-SU](#) [WLNN-ER-DP551](#)