



SECURE  
ENTERPRISE-READY  
CELLULAR EXTENDER



Manage this device with  
Digi Remote Manager



# DIGI EX15

Branch connectivity in a compact, affordable, all-in-one solution

Digi EX15 LTE cellular extenders offer gigabit Ethernet and Wi-Fi connectivity for retailers and other organizations that cannot tolerate network downtime and the negative impact on revenue streams and brand reputation.

A suite of upgradeable Digi CORE® plug-in LTE modems lets users select the cellular speeds that best fit their business requirements, including LTE Cat 4, LTE-Advanced Cat 6 and LTE-Advanced Cat 11 for data-intensive applications.

Combine a Digi EX15 with a dedicated wireline connection to ensure dual ISP connectivity, maximum uptime and complete business continuity for devices that must be “always on,” such as mobile kiosks, digital signs and POS systems.

You can use Digi EX15 for primary LTE connectivity, in addition to dual-connectivity/failover. Additionally, the serial port can provide out-of-band (OOB) management for remote, off-premise equipment.

Digi device management applications provide easy setup, configuration and support for Digi devices. Digi Remote Manager® offers secure, web-based device management for network visibility and control over your Digi enterprise routers and gateways after deployment. For fast and easy installations, a site survey battery, PoE injector and mounting accessories are included for proper placement based on optimal signal strength.

## FEATURES AND BENEFITS

- LTE-certified Digi CORE plug-in modem
- Scalable cellular technology allows you to match speeds to applications and future proof your network
- Optimized connectivity to any Ethernet device
- Battery pack for site survey to identify optimal signal strength placement
- Multiple mounting options and accessories
- Serial port for remote, out-of-band management
- Securely deploy, monitor and control devices with Digi Remote Manager
- Zero-touch provisioning and cloud management

## RELATED PRODUCTS



Digi 6310-DX



Digi 6330-MX



Digi CORE plug-in  
LTE modem

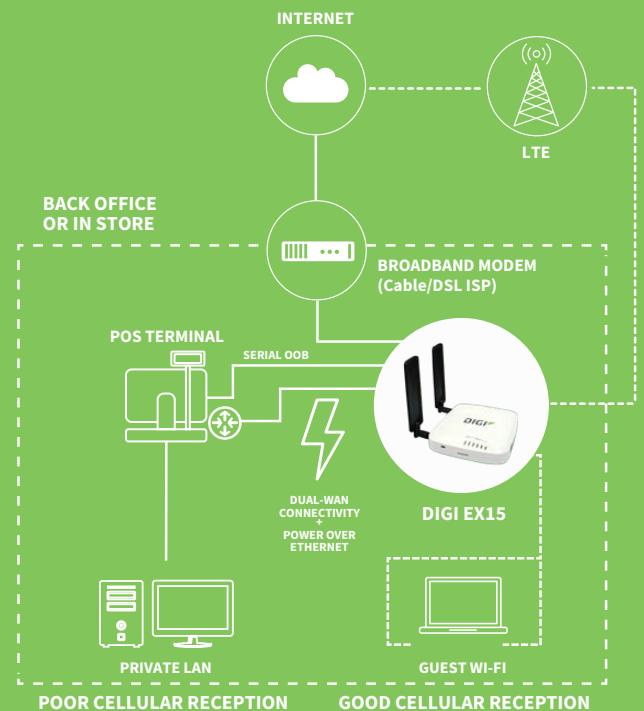


Digi IX14



Digi Remote  
Manager

## APPLICATION EXAMPLE

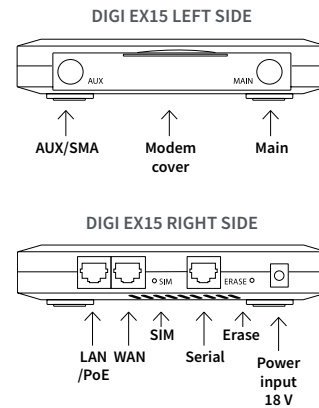


## SPECIFICATIONS

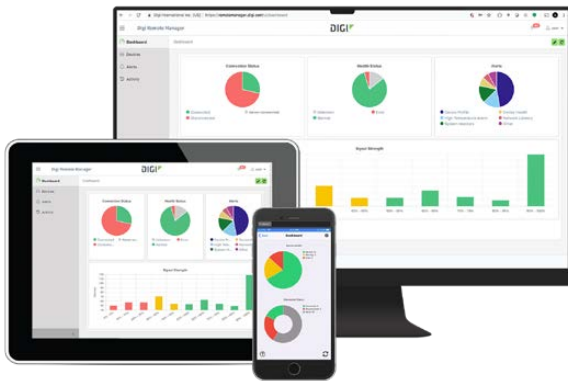
## DIGI® EX15

<b>CELLULAR CONNECTIVITY</b>	
<b>DIGI CORE® PLUG-IN LTE MODEMS</b>	LTE Cat 4 (US): B2, B4, B5, B12, B13; 3G: B2, B5; Transfer rate (max): 150 Mbps down, 50 Mbps up
	LTE Cat 4 (EU): B1, B3, B7, B8, B20; 3G: B1, B8; 2G: B3, B8; Transfer rate (max): 150 Mbps, 50 Mbps up
	LTE-A Cat 6 (GLB): B1, B2, B3, B4, B5, B7, B8, B12, B13, B20, B25, B26, B29, B30, B41; WCDMA: B1, B2, B3, B4, B5, B8; Transfer rate (max): 300 Mbps, 50 Mbps up
	LTE-A Cat 11 (GLB): LTE FDD: B1, B2, B3, B4, B5, B7, B8, B12, B13, B17, B20, B25, B26, B29, B30, B66; LTE TDD: B38, B40, B41; 3G: B1, B2, B4, B5, B8; Transfer rate (max): 600 Mbps, 75 Mbps up
<b>CONNECTORS</b>	(2) 50 Ω SMA (center pin: female)
<b>SIM SLOTS</b>	(2) Mini-SIM (2FF); software selectable and hardware switchable
<b>SOFTWARE AND MANAGEMENT</b>	
<b>REMOTE MANAGEMENT</b>	Digi Remote Manager®; SNMP v3 (user installed/managed), encrypted SMS
<b>LOCAL MANAGEMENT</b>	WebUI (HTTP/HTTPS); CLI (SSH, serial port)
<b>PROTOCOLS</b>	RIP, RIPng, OSPFv2, OSPFv3, BGP, Babel, IS-IS
<b>MANAGEMENT / TROUBLESHOOTING TOOLS</b>	FTP client, SCP; protocol analyzer with PCAP for Wireshark; event logging with Syslog and SMTP client; NTP/SNTP
<b>MEMORY</b>	256 MB RAM, 512 MB flash
<b>ETHERNET</b>	
<b>PORTS</b>	(2) RJ-45; 10/100/1000 Mbps (auto-sensing)
<b>WI-FI (OPTIONAL)</b>	
<b>CONNECTIVITY</b>	2 x 2 MIMO 2.4/5 GHz: 802.11 b/g/n 2.4 GHz; 802.11 n/a/ac 5 GHz
<b>SERIAL</b>	
<b>PORTS</b>	(1) RS-232 (RJ-45)
<b>PHYSICAL</b>	
<b>DIMENSIONS (L x W x H)</b>	142 mm x 128 mm x 31 mm (5.6 in x 5.0 in x 1.2 in)
<b>WEIGHT</b>	0.2 kg (7.0 oz)
<b>STATUS LEDs</b>	LAN (link = solid, flashing = act), WAN (link = solid, flashing = act), LTE, 5 signal, SIM 1 and 2 LEDs
<b>ENCLOSURE</b>	Plastic
<b>POWER REQUIREMENTS</b>	
<b>POWER INPUT</b>	18 VDC 1 A
<b>OTHER</b>	includes PSU, antennas, and remote mounting kit: temporary battery, passive PoE injector, mounting bracket and accessories
<b>ENVIRONMENTAL</b>	
<b>OPERATING TEMPERATURE</b>	0° C to 40° C (32° F to 104° F)
<b>RELATIVE HUMIDITY</b>	5% to 95% (non-condensing)
<b>APPROVALS</b>	
<b>CELLULAR</b>	PTCRB; US: AT&T, Verizon; Canada; Europe
<b>EMISSIONS / IMMUNITY</b>	FCC Part 15, Subpart B, Class A; CE, RCM; CAN ICES-3(B)/NMB-3(B)
<b>WARRANTY</b>	
<b>PRODUCT WARRANTY</b>	3-year

## PRODUCT IMAGES



## DIGI REMOTE MANAGER®



### INFRASTRUCTURE

- Hosted in a commercial-grade SAS 70-certified environment
- Superior availability, operating to 99.9% or greater
- Open APIs available to support application development

### CAPABILITIES

- Centralized management of remote devices over 3G/4G/LTE
- Define standard configurations and automatically monitor individual devices for PCI security compliance
- Get alerts and create reports on performance statistics, including connection history, signal quality, latency, data usage and packet loss
- No servers or applications to operate and maintain
- Perform tasks across your entire device network in minutes
- Edit configurations and update firmware for individual devices or groups
- Monitor the status and location of remote devices via a web browser
- Activate or deactivate cellular lines and monitor data to ensure you never incur overage charges

### SECURITY

- Certified SSAE-16 facilities
- Over 175 security controls in place to protect your data
- Enables compliance with security frameworks like PCI, HIPAA, NIST
- Earned SkyHigh's Cloud Trust Program highest rating of Enterprise-Ready

PART NUMBERS	DIGI EX15
ASB-EX15-XX04-OUS	Digi EX15: 2-port GigE; RJ-45, RS-232, No Wi-Fi; LTE / HSPA+ Cat 4; Cellular certifications: PTCRB, AT&T, Verizon, US, Canada
ASB-EX15-XXE4-GLB	Digi EX15: 2-port GigE; RJ-45, RS-232, No Wi-Fi; LTE / HSPA+ Cat 4; Cellular certifications: PTCRB, Europe
ASB-EX15-XX06-GLB	Digi EX15: 2-port GigE; RJ-45, RS-232, No Wi-Fi; LTE-A / HSPA+ Cat 6; Cellular certifications: PTCRB, AT&T, Verizon, US, Canada, Europe
ASB-EX15-XX11-OUS	Digi EX15: 2-port GigE; RJ-45, RS-232, No Wi-Fi; LTE-A / HSPA+ Cat 11; Cellular certifications: PTCRB, AT&T, Verizon, US, Canada
ASB-EX15-XX11-GLB	Digi EX15: 2-port GigE; RJ-45, RS-232, No Wi-Fi; LTE-A / HSPA+ Cat 11; Cellular certifications: PTCRB, AT&T, Verizon, US, Canada, Europe
ASB-EX15-WX04-OUS	Digi EX15: 2-port GigE; RJ-45, RS-232, Wi-Fi; LTE / HSPA+ Cat 4; Cellular certifications: PTCRB, AT&T, Verizon, US, Canada
ASB-EX15-WXE4-GLB	Digi EX15: 2-port GigE; RJ-45, RS-232, Wi-Fi; LTE / HSPA+ Cat 4; Cellular certifications: PTCRB, Europe
ASB-EX15-WX06-GLB	Digi EX15: 2-port GigE; RJ-45, RS-232, Wi-Fi; LTE-A / HSPA+ Cat 6; Cellular certifications: PTCRB, AT&T, Verizon, US, Canada, Europe
ASB-EX15-WX11-OUS	Digi EX15: 2-port GigE; RJ-45, RS-232, Wi-Fi; LTE-A / HSPA+ Cat 11; Cellular certifications: PTCRB, AT&T, Verizon, US, Canada
ASB-EX15-WX11-GLB	Digi EX15: 2-port GigE; RJ-45, RS-232, Wi-Fi; LTE-A / HSPA+ Cat 11; Cellular certifications: PTCRB, AT&T, Verizon, US, Canada, Europe

PART NUMBERS	DIGI CORE® PLUG-IN LTE MODEMS
ASB-1002-CM04-OUS	Digi CORE plug-in LTE modem; LTE / HSPA+ Cat 4; Cellular certifications: PTCRB, AT&T, Verizon, Canada
ASB-1002-CME4-GLB	Digi CORE plug-in LTE modem; LTE / HSPA+ Cat 4; Cellular certifications: PTCRB, RED, Europe
ASB-1002-CM06-GLB	Digi CORE plug-in LTE modem; LTE-A / HSPA+ Cat 6; Cellular certifications: PTCRB, RED, AT&T, Verizon, Canada, Europe
ASB-1003-CM11-GLB	Digi CORE plug-in LTE modem; LTE-A / HSPA+ Cat 11; Cellular certifications: PTCRB, RED, AT&T, Verizon, Canada, Europe

PART NUMBERS	ACCESSORIES
450061	18 V PSU power supply with barrel jack connector (replacement)
500157	Cable assembly passive POE power injector, white 2.1 mm barrel connector (replacement)
560083	Temporary site survey battery pack, 9 V with 152.4 mm power lead, 2.1 mm barrel connector (replacement)
170011	(1) Antenna extender: 48 mm circle antenna magnetic base (base connector: SMA jack); cable: low loss CLF; 50 cm length with SMA plug (replacement for optional Wi-Fi enabled models)
170017	(2) Cellular antenna (replacement)

FOR MORE INFORMATION  
PLEASE VISIT [DIGI.COM](http://DIGI.COM)

DIGI SERVICE AND SUPPORT / You can purchase with confidence knowing that Digi is always available to serve you with expert technical support and our industry leading warranty. For detailed information visit [www.digi.com/support](http://www.digi.com/support).

© 1996-2020 Digi International Inc. All rights reserved.  
All trademarks are the property of their respective owners.

91004393  
C10/420

DIGI INTERNATIONAL WORLDWIDE HQ  
877-912-3444 / 952-912-3444 / [www.digi.com](http://www.digi.com)

DIGI INTERNATIONAL JAPAN  
+81-3-5428-0261 / [www.digi-intl.co.jp](http://www.digi-intl.co.jp)

DIGI INTERNATIONAL GERMANY  
+49-89-540-428-0

DIGI INTERNATIONAL SINGAPORE  
+65-6213-5380

DIGI INTERNATIONAL CHINA  
+86-21-50492199 / [www.digi.com.cn](http://www.digi.com.cn)



## **X-ON Electronics**

Largest Supplier of Electrical and Electronic Components

*Click to view similar products for [Mobile Modules](#) category:*

*Click to view products by [Digi International](#) manufacturer:*

Other Similar products are found below :

[SIM7100A 4G/LTE KIT](#) [EZTEXT](#) [CB410L](#) [XBC-M5-UT-001](#) [GSM-EXP](#) [MPCIE-3G-R10](#) [M100CDMA485-V](#) [M100CDMAPLUS-V](#)  
[nRF9160-SICA-R7](#) [ONE523MEA](#) [T523MEA](#) [2701344](#) [EG91NAXGA-128-SGNS](#) [EG91NSGA-512-SGNS](#) [SARA-R412M-02B](#) [ASB-EX15-](#)  
[WC18-GLB](#) [ASB-EX15-XC18-GLB](#) [ASB-EX15-XX06-GLB](#) [ASB-EX15-XX06-OUS](#) [SKY77643-11](#) [SKY77768-11](#) [SKY77764-11](#)  
[SKY77765-11](#)