



BATTERY POWERED,  
CELLULAR GATEWAY  
FOR SENSOR  
MONITORING



# DIGI CONNECT<sup>®</sup> SENSOR+

Easy-to-install and roll-out ready, battery-powered cellular gateway solution

Digi Connect Sensor+ is a fully integrated, battery powered cellular gateway with I/O for connecting to a wide range of external sensors. Designed to work in rugged industrial environments, the Connect Sensor+ is the ideal solution for companies looking to add remote monitoring and diagnostics in places where power is not easily available. Its easy installation, reliability and low data usage make remote monitoring possible in areas where it was previously cost prohibitive.

Local protocol support allows the Connect Sensor+ to communicate with Wired HART and/or Modbus sensors and capture sensor diagnostics along with data. This enables users

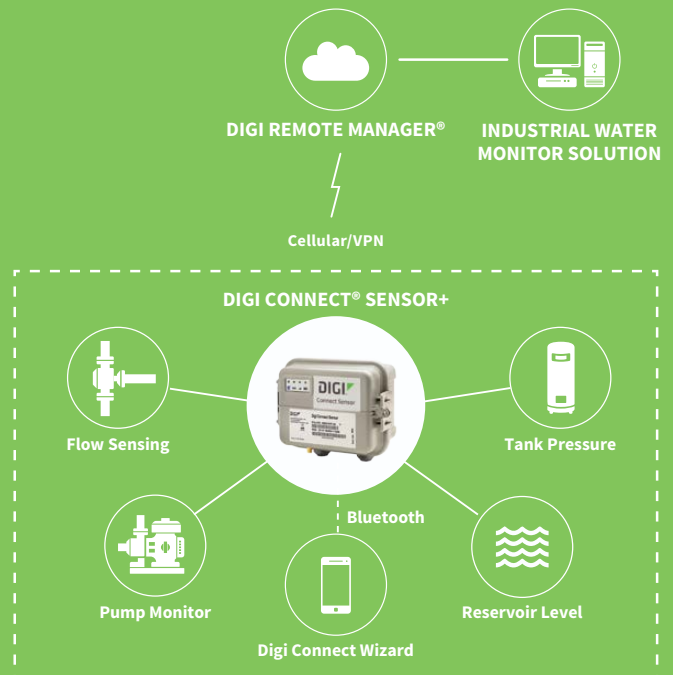
to not only monitor their data but also remotely diagnose the health of their sensors. Digi Connect Sensor+ leverages Digi Remote Manager<sup>®</sup>, enabling customers who need to monitor large numbers of sensors to easily integrate that data into existing applications or work with third-party applications

Digi Connect Sensor+ works with Digi Connect Wizard. This smartphone application is the first of its kind for this type of battery powered gateway. It gives local installers, technicians or drivers instant feedback of sensor values over Bluetooth.

## BENEFITS

- Weatherproof enclosure with wide temperature range makes it ideal for use in all environments
- Configurable read and report intervals with threshold and delta alarms
- Multiple configurable I/O make it possible to connect to multiple sensor types
- Wired HART and Modbus protocol support
- External, configurable power outputs eliminate the need for sensor power supplies
- Global cellular coverage

## APPLICATION EXAMPLE



## RELATED PRODUCTS



Digi Connect Tank



Digi Remote Manager<sup>®</sup>



Antennas and Accessories



Digi TransPort<sup>®</sup> WR31



Bundle Services

## SPECIFICATIONS

## Digi Connect® Sensor+

<b>WWAN</b>	
<b>2G BANDS</b>	GSM 850, GSM 900, DCS 1800, PCS 1900
<b>3G BANDS</b>	FDD B1, B2, B4, B5, B8
<b>LTE CATEGORY 1</b>	Verizon: Bands 2, 4, 13 AT&T, T-Mobile: Bands 2, 4, 5 with 3G/2G fallback
<b>ANTENNA CONNECTOR</b>	External SMA
<b>SIM SLOTS</b>	1, Standard size
<b>MANAGEMENT</b>	
<b>CONFIGURATION AND MANAGEMENT</b>	Digi Remote Manager/Local USB to Serial CLI
<b>POWER</b> (Does not include power draw of external sensors)	
<b>EXTERNAL POWER INPUT RANGE</b>	8 VDC to 30 VDC
<b>BATTERY AND BATTERY LIFE</b>	7.2 V, 14.5 Ah, Lithium thionyl chloride, non-rechargeable, replaceable; Approximately 2 years (@ 2 reads/transmits per day)
<b>POWER DRAW, SLEEPING</b>	86.4 uW
<b>POWER DRAW, CONTINUOUS MONITOR</b>	400 mW
<b>POWER DRAW, PEAK TRANSMIT</b>	14.4 Watts
<b>SENSOR PROTOCOL SUPPORT</b>	
<b>WIRED HART</b>	HART 5,7
<b>MODBUS</b>	MODBUS RTU AND ASCII, Connect to up to 4 devices
<b>ANALOG I/O</b>	
<b>INPUTS</b>	4, Configurable as 4/20 mA or 0-10 VDC Analog inputs
<b>INPUT VOLTAGE RANGE</b>	0-10.5 V (Analog input)
<b>INPUT CURRENT RANGE</b>	4-22 mA (Current loop input)
<b>DIGITAL I/O</b>	
<b>PORTS</b>	1 digital I/O or pulse counter input
<b>INPUT RANGE</b>	0-0.6 VDC logic low; 2.2 V-30 VDC logic high
<b>MAX INPUT VOLTAGE</b>	30 VDC
<b>MAX PULSE COUNT FREQUENCY</b>	2 KHZ
<b>DIGITAL OUTPUT</b>	Open collector output, max sink current 450 mA
<b>OUTPUT POWER</b>	
<b>PORTS</b>	5
<b>OUTPUT VOLTAGE OPTIONS</b>	3.3, 5, 15, 24 VDC
<b>MAX CURRENT OUTPUT</b>	200 mA
<b>ENVIRONMENTAL</b>	
<b>OPERATING TEMPERATURES</b>	-35° C to +70° C
<b>STORAGE TEMPERATURE</b>	-40° C to +85° C
<b>RELATIVE HUMIDITY</b>	90%
<b>BATTERY DISCHARGE</b>	<1%/year if stored at +30° C
<b>PHYSICAL</b>	
<b>DIMENSIONS (L x W x H)</b>	152.4 mm x 108.4 mm (127 mm including glands) x 74.6 mm
<b>WEIGHTS</b>	264 g
<b>LEDS INDICATORS</b>	Battery, cellular, sensor and Bluetooth
<b>ENCLOSURE MATERIAL</b>	Lexan
<b>REGULATORY APPROVALS</b>	
<b>SAFETY</b>	UL60950-1, CAN/CSA C22.2 No. 60950-1-01, IEC 60950-1:2005 (Second Edition); Am1:2009 + Am2:2013, EN 60950-1:2006 / A11:2009 / A1:2010 / A12:2011 / A2:2013 and EN 60950-22:2006; Class 1, Division II, groups A,B,C,D; ANSI/ISA 12.12.01:2015,CAN/CSA C22.2 No 213-15, 1st Ed ATEX EN 60079-0:2012+A11:2013, EN 60079-15:2010, eII 3 G Ex nA nC IIC T6 Gc
<b>EMISSIONS</b>	FCC part 15 Subpart B class B, EN55022: 2010/AC: 2011 class B, IECs-003 Issue 5: 2012 class B
<b>IMMUNITY</b>	EN55024:2010
<b>WARRANTY</b>	
<b>PRODUCT WARRANTY</b>	3 years, excluding battery

PART NUMBERS	DESCRIPTION
CSENSE-A210	Connect Sensor+, Verizon LTE
CSENSE-A310	Connect Sensor +, AT&T and T-Mobile LTE
CSENSE-A710	Connect Sensor+, Global 3G/2G

Antennas are sold separately

FOR MORE INFORMATION  
PLEASE VISIT [WWW.DIGI.COM](http://WWW.DIGI.COM)

**DIGI SERVICE AND SUPPORT** / You can purchase with confidence knowing that Digi is always available to serve you with expert technical support and our industry leading warranty. For detailed information visit [www.digi.com/support](http://www.digi.com/support).

© 1996-2017 Digi International Inc. All rights reserved.  
All trademarks are the property of their respective owners.

91003579  
A2/517

**DIGI INTERNATIONAL WORLDWIDE HQ**  
877-912-3444 / 952-912-3444 / [www.digi.com](http://www.digi.com)

**DIGI INTERNATIONAL FRANCE**  
+33-1-55-61-98-98 / [www.digi.fr](http://www.digi.fr)

**DIGI INTERNATIONAL JAPAN**  
+81-3-5428-0261 / [www.digi-intl.co.jp](http://www.digi-intl.co.jp)

**DIGI INTERNATIONAL SINGAPORE**  
+65-6213-5380

**DIGI INTERNATIONAL CHINA**  
+86-21-50492199 / [www.digi.com.cn](http://www.digi.com.cn)



## X-ON Electronics

Largest Supplier of Electrical and Electronic Components

*Click to view similar products for [Development Software](#) category:*

*Click to view products by [Digi International](#) manufacturer:*

Other Similar products are found below :

[SRP004001-01](#) [SW163052](#) [SYSWINEV21](#) [WS01NCTF1E](#) [W128E13](#) [SW89CN0-ZCC](#) [IP-UART-16550](#) [MPROG-PRO535E](#) [AFLCF-08-LX-CE060-R21](#) [WS02-CFSC1-EV3-UP](#) [SYSMAC-STUDIO-EIPCPLR](#) [1120270005](#) [SW006021-2H](#) [ATATMELSTUDIO](#) [2400573](#) [2702579](#) [2988609](#) [SW006022-DGL](#) [2400303](#) [88970111](#) [DG-ACC-NET-CD](#) [55195101-101](#) [55195101-102](#) [SW1A-W1C](#) [MDK-ARM](#) [SW006021-2NH](#) [B10443](#) [SW006021-1H](#) [SW006021-2](#) [SW006022-2](#) [SW006023-2](#) [SW007023](#) [MIKROE-730](#) [MIKROE-2401](#) [MIKROE-499](#) [MIKROE-722](#) [MIKROE-724](#) [MIKROE-726](#) [MIKROE-728](#) [MIKROE-732](#) [MIKROE-734](#) [MIKROE-736](#) [MIKROE-738](#) [MIKROE-744](#) [MIKROE-928](#) [MIKROE-936](#) [1120270002](#) [1120270003](#) [1120275015](#) [NT-ZJCAT1-EV4](#)