



REMOTE MANAGED
CONSOLE
ACCESS SERVER



DIGI CONNECT IT MINI

Secure, affordable, managed out-of-band access for isolated remote IT devices

The Digi Connect® IT Mini remote console access server ensures continuous network uptime to remote locations. It provides an always-on, out-of-band gateway for branch office routers in locations like retail stores, kiosks or other sites. Connect IT Mini enables backup connectivity to manage and correct issues with isolated, critical IT infrastructure.

For enterprises that need serial access for remote equipment monitoring, Digi Connect IT Mini offers a complete and secure cellular-based solution in the industry for less than the cost of an enterprise modem. Using Digi Remote Manager® (Digi RM) and Connect IT Mini, network administrators can identify and remediate issues at the network edge before they can become a work order or cause a network interruption.

Digi TrustFence®, a suite of hardware and security features, ensures the integrity of Digi Connect IT Mini and safeguards out-of-band access to isolated infrastructure. To secure your connections, built-in features include authenticated boot, encrypted data storage, access-controlled ports, and secure software updates.

Digi RM and Digi Connect IT Mini provide easy setup, configuration, security management and serial port monitoring of large installations of remote Digi devices. Digi RM offers web-based device management for any Digi cellular routers, gateways or third-party devices and offers single-pane-of-glass view to monitor and access Digi Connect IT console access servers and the critical IT assets to which they are connected.

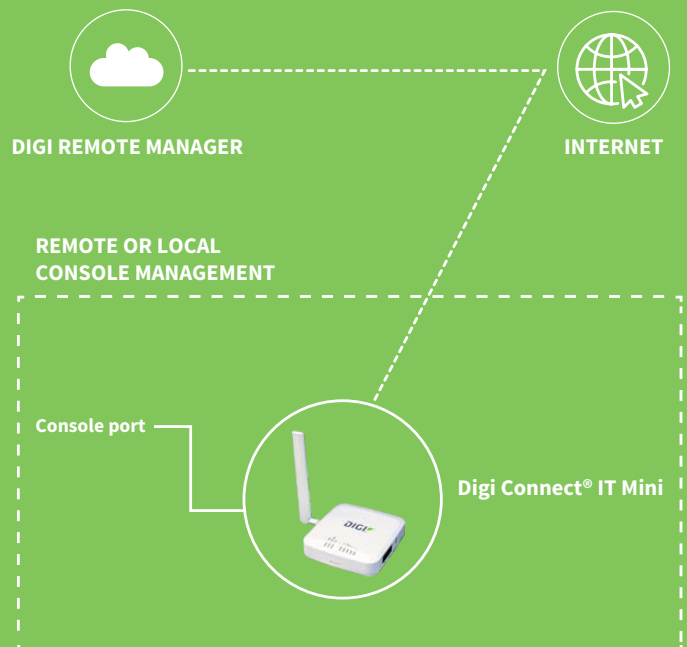
FEATURES AND BENEFITS

- LTE Cat-M for maximum coverage
- Out-of-band (OOB) management and recovery using secure SMS
- Advanced modem management software
- Early detection and remediation of issues
- Operates independently from in-band network
- Identify any unusual activity or attempts to access the remote device
- Send automated alerts via email or SMS to notify of any network issues

RELATED PRODUCTS



APPLICATION EXAMPLE



SPECIFICATIONS	DIGI CONNECT IT MINI
CELLULAR	LTE Cat-M/NB-IoT
MODULE SUPPORT	Global LTE Cat-M/NB-IoT
SOFTWARE AND MANAGEMENT	
REMOTE MANAGEMENT	Digi Remote Manager® (cloud-based)
LOCAL MANAGEMENT	WebUI (HTTP/HTTPS); CLI (console, SSH)
NETWORK	
ETHERNET	RJ-45; 10/100 Mbps (auto-sensing)
CONNECTIONS	
SERIAL/USB	Serial port RJ-45 RS-232 and USB 2.0 host port
PHYSICAL	
DIMENSIONS (L x W x H)	127 mm x 127 mm x 25 mm (5.0 in x 5.0 in x 1.0 in)
WEIGHT	0.37 kg (13 oz)
STATUS LEDS	Power, online, LTE, (5) signal strength
POWER REQUIREMENTS	
POWER INPUT	5.0 VDC, 1 A; 100-240 VAC
ENVIRONMENTAL	
OPERATING TEMPERATURE	0° C to 40° C (32° F to 104° F)
RELATIVE HUMIDITY	5% to 95% (non-condensing)
APPROVALS	
SAFETY, ENVIROMENTAL, EMISSIONS/IMMUNITY	FCC Part 15, Subpart B, Class A; CE, RCM; CAN ICES03(B)/NMB-3(B)
WARRANTY	
PRODUCT WARRANTY*	3-year

PRODUCT IMAGES

DIGI CONNECT IT MINI LEFT

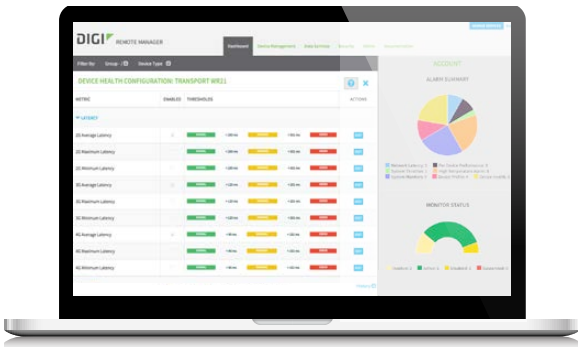


DIGI CONNECT IT MINI RIGHT



ENTERPRISE SOFTWARE	DESCRIPTION
PROTOCOL SUPPORT	HTTP, HTTPS, FTP, SFTP, SSL, SNMP v3, SSH and CLI for web management; Remote management via Digi Remote Manager®; SMS management
SECURITY/VPN	IP filtering, stateful inspection firewall with scripting, address and port translation; VPN: IPSec with IKEv1, IKEv2, NAT Traversal; SSL, SSLv2, SSLv3; IPSec & OpenVPN tunnels; Cryptology: SHA-1, SHA-2, MD5, RSA; Encryption: DES, 3DES and AES up to 256-bit (CBC mode for IPSec); Authentication: RADIUS, TACACS+, MAC address filtering; VLAN support
ROUTING/FAILOVER	IP pass-through; NAT, NAPT with IP port forwarding; Ethernet bridging; GRE; Multicast routing; Routing protocols: PPP, OSPF, BGP, RSTP (Rapid Spanning Tree Protocol); IP failover: VRRP, Automatic failover/failback to secondary connection
OTHER PROTOCOLS	QoS via TOS/DSCP/WRED; UDP/TCP to serial

DIGI REMOTE MANAGER®



CAPABILITIES

- Centralized management of remote devices over 3G/4G/LTE
- Define standard configurations and automatically monitor individual devices for PCI security compliance
- Report and alert on performance statistics, including connection history, signal quality, latency, data usage and packet loss
- No servers or applications to operate and maintain
- Complete tasks for your entire device network in minutes
- Edit configurations and update firmware for your individual devices or groups
- Monitor the status and location of your remote device via a web browser
- Active or deactivate cellular lines and monitor data to ensure you never incur overage charges

INFRASTRUCTURE

- Hosted in a commercial-grade SAS 70-certified environment
- Superior availability, operating to 99.9% or greater
- Open APIs available to support application development

SECURITY

- Certified SSAE-16 facilities
- Over 175 security controls in place to protect your data
- Enables compliance with security frameworks like PCI, HIPAA, NIST and more
- Earned SkyHigh's Cloud Trust Program highest ranking of Enterprise-Ready

PART NUMBERS	DIGI CONNECT IT MINI
IT01-M100-GLB	Digi Connect IT Mini remote console access server

PART NUMBERS	ACCESSORIES
170012	(1) Cellular antenna (black) for use with Digi products that have LTE modems - replacement

DIGI SERVICE AND SUPPORT / You can purchase with confidence knowing that Digi is always available to serve you with expert technical support and our industry leading warranty. For detailed information visit www.digi.com/support.

© 1996-2020 Digi International Inc. All rights reserved.
All trademarks are the property of their respective owners.

DIGI INTERNATIONAL WORLDWIDE HQ
877-912-3444 / 952-912-3444 / www.digi.com

DIGI INTERNATIONAL JAPAN
+81-3-5428-0261 / www.digi-intl.co.jp

DIGI INTERNATIONAL GERMANY
+49-89-540-428-0

DIGI INTERNATIONAL SINGAPORE
+65-6213-5380

DIGI INTERNATIONAL CHINA
+86-21-50492199 / www.digi.com.cn

91004398
B5/720



X-ON Electronics

Largest Supplier of Electrical and Electronic Components

Click to view similar products for [Servers](#) category:

Click to view products by [Digi International](#) manufacturer:

Other Similar products are found below :

[70002259](#) [70002261](#) [VESR321-ML](#) [NBLM-LM1CR](#) [EKI-1528TI-VDC-CE](#) [ADAM-4570L-DE](#) [ADAM-4571-CE](#) [XPC100200S-01](#) [ESP904](#)
[96NIC-10G2P-IN](#) [ADAM-4570-CE](#) [ADAM-4571L-DE](#) [AGS-913I-R11A1E](#) [EKI-1361-MB-BE](#) [EKI-1362-BE](#) [EKI-1362-MB-BE](#) [EKI-1522-](#)
[CE](#) [EKI-1524I-CE](#) [EKI-1526-CE](#) [EKI-1526I-CE](#) [ABDN-ER-IN5018](#) [ESP901](#) [ESP902](#) [ESR901](#) [ESR904](#) [BB-VESR902T](#) [VESR902D](#)
[70002412](#) [70002263](#) [70002265](#) [70002269](#) [70002271](#) [70002277](#) [70002279](#) [70002281](#) [70002285](#) [70002324](#) [70002404](#) [70002406](#) [70002410](#)
[70002414](#) [70002418](#) [ED1100002-01](#) [ED2100002-01](#) [ED41000P0-01](#) [ED41000P2-01](#) [PEN100100A-01-IT](#) [PXC2102G2-01](#) [SD2101002-11](#)
[UD1100002-01](#)