



RUGGED, SECURE
LTE ROUTER



Manage this device with
Digi Remote Manager

DIGI IX20

Cloud managed networking for critical applications

Digi IX20 is a full-featured cellular router that can scale from basic connectivity applications to industrial-class routing and security solutions. Its flexible power and connectivity options make it a versatile choice for use in industrial infrastructure, digital signage, retail kiosks, service terminals and other critical assets with a need for secure transactions.

The high-performance architecture of the Digi IX20 router provides primary and backup WWAN connectivity over software selectable multi-carrier LTE. Digi IX20 supports software features for advanced security (stateful firewall, MAC filtering and VPN), redundancy (Digi SureLink®) and management (SNMP, event logging, analyzer trace and QOS), enabling it to be used in PCI or NERC-CIP compliant applications.

Digi IX20 can be managed with Digi Remote Manager®, a cloud-based solution that facilitates easy setup, mass configuration, maintenance and support for hundreds or even thousands of remote Digi and third-party devices. Digi Remote Manager lets you evaluate, update and configure your WiFi Digi enterprise routers and gateways — and the health of your network — at scale, after deployment.

The Digi IX20 family of routers has a single part number, which simplifies inventory control for global distribution and deployment. In addition, Digi IX20 is designed for Digi CORE® plug-in LTE modems that can be changed out or upgraded without replacing the entire router.

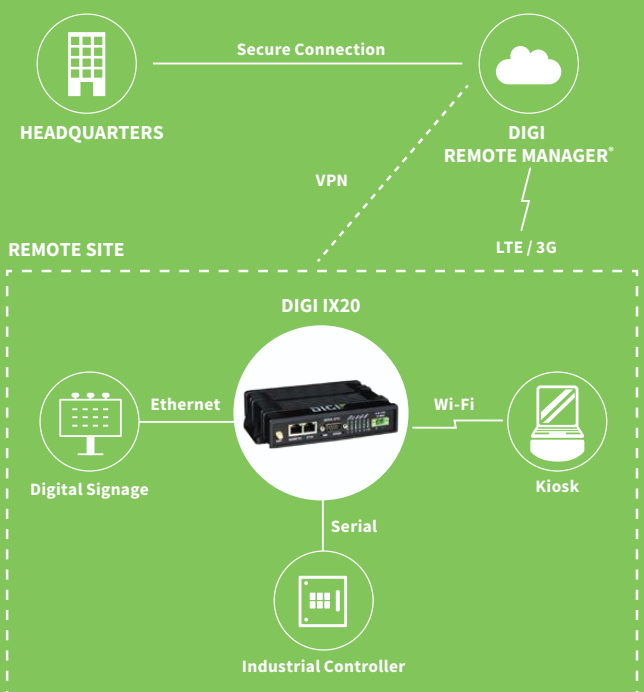
FEATURES AND BENEFITS

- Compact and economical cellular routing platform with industrial feature set
- Redundant connectivity with dual SIMs and Digi SureLink
- Global bands and single part number to simplify global distribution, deployment and management
- Built-in Digi TrustFence® for device security, device identity and data privacy
- Digi Remote Manager software for easy setup, mass configuration and management
- Dual Ethernet ports and single serial (RS-232) port

RELATED PRODUCTS



APPLICATION EXAMPLE



SPECIFICATIONS

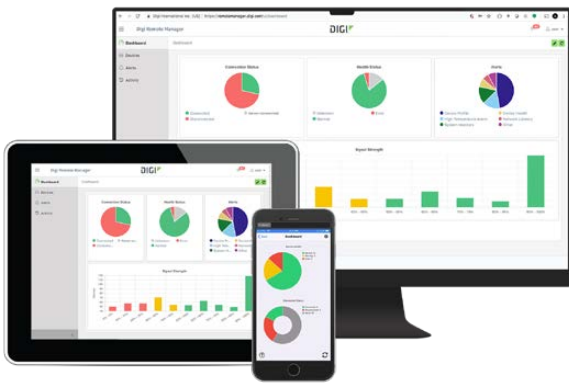
DIGI IX20

CELLULAR	
CERTIFICATIONS	Visit https://www.digi.com/resources/certifications for latest certifications
LTE (G4) WITH DIGI CORE® PLUG-IN LTE MODEM 1002-CMG4	LTE Cat 4: B1, B2, B3, B4, B5, B7, B8, B13, B18, B19, B20, B25, B26, B28, B38, B39, B40, B41 3G: B1, B2, B4, B5, B6, B8, B19 2G EDGE / GPRS: 850 / 900 / 1800 / 1900 MHz
CONNECTORS	(2) 50 Ω SMA (center pin: female)
SIM SLOTS	(2) Mini-SIM (2FF)
SIM SECURITY	Secured in cellular module
WI-FI	
MODULE	1 x 1 SISO dual-band 802.11a/b/g/n/ac (2.4 GHz / 5 GHz)
AUTHENTICATION	TACACS+, Enterprise RADIUS
MODES	Client mode and access point mode simultaneously
CLIENTS	Maximum 10 clients (access point mode: regardless of combination of clients and access points)
ACCESS POINTS	Maximum 2 access points (access point mode: regardless of combination of clients and access points)
SECURITY	WPA/WPA-2 personal, WPA/WPA-2 enterprise
CONNECTORS	(1) 50 Ω SMA (center pin: male)
SOFTWARE AND MANAGEMENT	
REMOTE MANAGEMENT	Digi Remote Manager®; SNMP v2/v3 (user installed/managed)
LOCAL MANAGEMENT	WebUI (HTTP/HTTPS); CLI (Telnet, SSH)
MANAGEMENT/TROUBLESHOOTING TOOLS	FTP client, SCP; protocol analyzer with PCAP for Wireshark; event logging with Syslog and SMTP client; NTP/SNTP; Nagios, Intelliflow, IPerf, DynamicDNS, Ping, Traceroute
MEMORY	256 MB RAM, 256 MB flash
ETHERNET	
PORTS	(2) RJ-45; 10/100 Mbps (auto-sensing)
SERIAL	
PORTS	(1) DB9M; RS-232 DTE; Signal support TXD, RXD, CTS, DTR, DCD, flow control software (XON/OFF), hardware supported (CTS/RTS)
PHYSICAL	
DIMENSIONS (L x W x H)	107 mm x 162 mm x 35 mm (4.21 in x 6.38 in x 1.38 in)
WEIGHT	0.65 kg (1.4 lb)
STATUS LEDs	Power, Internet, Wi-Fi, SIM 1, SIM 2, signal strength (5), LTE
ENCLOSURE	Glass-filled polyphenylene sulphide (PPS) / IP30
POWER REQUIREMENTS	
POWER INPUT	9 - 30 VDC, 1.0 A maximum
POWER CONSUMPTION	2.5 W typical (idle); 6 W typical (peak Tx/Rx)
ENVIRONMENTAL	
OPERATING TEMPERATURE	Models with Wi-Fi: -20° C to 70° C (-4° F to 158° F); device performance may be impacted above 50° C (122° F)
	Models without Wi-Fi: -40° C to 70° C (-40° F to 158° F); device performance may be impacted above 50° C (122° F)
RELATIVE HUMIDITY	5% to 95% (non-condensing)
APPROVALS	
CELLULAR	Visit https://www.digi.com/resources/certifications for latest cellular certifications
SAFETY	IEC62368-1, CB, EN62311
ENVIRONMENTAL	ROHS3
EMISSIONS / IMMUNITY	CE; RED; FCC Part 15, Subpart B; ICES-003; AU/NZS CISPR32
WARRANTY	
PRODUCT WARRANTY	3-year

CELLULAR CONNECTIVITY

PROTOCOL SUPPORT	HTTP, HTTPS, FTP client, SSL, TLS v1.2, SCP (client and server), SFTP, SMTP client for use by scripts and the command line, SNMP (v2/v3), SSH; remote management via Digi Remote Manager®; Protocol analyzer, ability to capture PCAP for use with Wireshark; DynDNS; Dynamic DNS client compatible with BIND9/No-IP/DynDNS; Captive portal, Intelliflow; Nagios, DNS server, NTP server, Multicast, mDNS, IPerf
SECURITY	IP filtering, stateful firewall, custom firewall rules (iptables), address and port translation; SSL, SSLv2, SSLv3, FIPS 197, open VPN client and server; VPN tunnels; Authentication: RADIUS, TACACS+; certificates; MAC address filtering; VLAN support
VPN	IPSec with IKEv1, IKEv2, NAT Traversal; OpenVPN client and server; GRE VPN tunnels; Cryptology: SHA-1/256/384/512, MD5, RSA; Encryption: 3DES and AES up to 256-bit (CBC mode for IPsec); Diffie Hellman: DH groups 1-32 (CURVE448)
ROUTING / FAILOVER	IP pass-through; NAT, NAPT with IP port forwarding; Ethernet bridging; GRE; Multicast routing; Routing protocols: RIP (v1, v2) OSPF, BGP; IP failover: VRRP; automatic failover, Digi SureLink®
OTHER PROTOCOLS	DHCP; Dynamic DNS client compatible with No-IP/DynDNS

DIGI REMOTE MANAGER®



CAPABILITIES

- Centralized management of remote devices over 3G/4G/LTE
- Define standard configurations and automatically monitor individual devices for PCI security compliance
- Get alerts and create reports on performance statistics, including connection history, signal quality, latency, data usage and packet loss
- No servers or applications to operate and maintain
- Perform tasks across your entire device network in minutes
- Edit configurations and update firmware for individual devices or groups
- Monitor the status and location of remote devices via a web browser
- Activate or deactivate cellular lines and monitor data consumption to ensure you never incur overage charges

INFRASTRUCTURE

- Hosted in a commercial-grade SAS 70-certified environment
- Superior availability, operating to 99.9% or greater
- Open APIs available to support application development

SECURITY

- Certified SSAE-16 facilities
- Over 175 security controls in place to protect your data
- Enables compliance with security frameworks like PCI, HIPAA, NIST
- Earned SkyHigh's Cloud Trust Program highest rating of Enterprise-Ready

PRODUCT IMAGES

FRONT



WITH ANTENNAS



BACK



PART NUMBERS	DIGI® IX20
IX20-WAG4	Digi IX20 - LTE Cat 4 Global, Wi-Fi, (2) Ethernet, DB-9 RS-232; includes DIN rail clip, power supply, (2) cellular antenna, Wi-Fi antenna and Ethernet cable
IX20-0AG4	Digi IX20 - LTE Cat 4 Global, (2) Ethernet, DB-9 RS-232, includes DIN rail clip, power supply, (2) cellular antenna and Ethernet cable
IX20-W0G4	Digi IX20 - LTE Cat 4 Global, Wi-Fi, (2) Ethernet, DB-9 RS-232
IX20-00G4	Digi IX20 - LTE Cat 4 Global, (2) Ethernet, DB-9 RS-232

PART NUMBERS	ACCESSORIES
24000155	Power supply with plug tips for US, UK, EU, AU
170017	Cellular antenna
29000863	Wi-Fi antenna
440094	Ethernet cable - 2 m (6 ft)
76002093	DIN rail mounting bracket kit
76002095	DIN rail clip kit

DIGI SERVICE AND SUPPORT / You can purchase with confidence knowing that Digi is always available to serve you with expert technical support and our industry leading warranty. For detailed information visit www.digi.com/support.

© 1996-2020 Digi International Inc. All rights reserved.
All trademarks are the property of their respective owners.

DIGI INTERNATIONAL WORLDWIDE HQ
877-912-3444 / 952-912-3444 / www.digi.com

DIGI INTERNATIONAL JAPAN
+81-3-5428-0261 / www.digi-intl.co.jp

DIGI INTERNATIONAL GERMANY
+49-89-540-428-0

DIGI INTERNATIONAL SINGAPORE
+65-6213-5380

DIGI INTERNATIONAL CHINA
+86-21-50492199 / www.digi.com.cn

91004421
A8/520



X-ON Electronics

Largest Supplier of Electrical and Electronic Components

Click to view similar products for [Routers category](#):

Click to view products by [Digi International manufacturer](#):

Other Similar products are found below :

[LR54-AA401](#) [WR44-L900-AE1-RF](#) [WR31-U92A-DE1-TB](#) [SR30500020-SWH](#) [SR30510120](#) [SR30508010](#) [SR30500410](#) [UR2B612011](#)
[UR2L610011-SWH](#) [UR2L610710](#) [BB-ERT311](#) [BB-UR2B610011](#) [BB-UR2B610021](#) [SL30210110-SWH](#) [SL30210110-XSWH](#) [SR30010110-](#)
[SWH](#) [SR30510420-SWH](#) [SR30500420-SWH](#) [SR30518120-SWH](#) [XR2F000711](#) [ASB-631R-DX06-OUS](#) [TX64-A121](#) [X2E-Z1R-E1-W](#) [X2E-](#)
[Z1R-W1-W](#) [X2E-Z1R-E1-A](#) [E224HPL2S](#) [1153078](#) [1153079](#) [2702529](#) [RUT24006E000](#) [RUT950U022C0](#) [RUTX09000000](#) [RUTX11000000](#)
[FS-BENG-C](#) [FS-Router-BAC2](#) [IX14-M601](#) [RUT300000000](#) [RUT360000000](#) [RUT950V022C0](#) [RUT950K02400](#) [RUT950U025A0](#)
[RUT955M036V0](#) [RUT955T033B0](#) [RUT955J034S0](#) [RUT955M03690](#) [RUT955T03530](#) [RUTX12000000](#) [WR11-C100-DE1-SU](#) [WR21-L82B-](#)
[DE1-SU](#) [WLNN-ER-DP551](#)