



COMPACT 4G LTE
M2M ROUTER



DIGI TRANSPORT® WR11 XT

Secure 3G/4G/LTE cellular router for retail, kiosk and industrial control applications

Digi TransPort WR11 XT delivers a cost-optimized 4G LTE connection to mission critical M2M applications around the world. These cellular routers are ideal for connecting:

- Building and process automation controllers
- Smart grid assets (meters, switches and controllers)
- IP cameras and access controllers
- Remote data loggers, flow meters and sensing equipment
- Telco infrastructure controllers
- ATMs, kiosks and service terminals

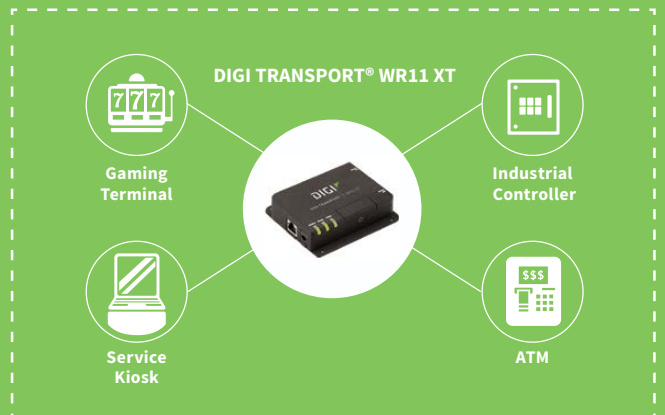
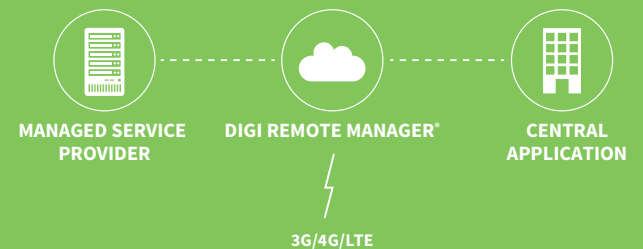
The Digi TransPort WR11 XT provides a secure, reliable connection to industrial controllers, retail terminals and process automation equipment on third party sites or remote locations. This drop-in connectivity gives operators a way to reduce the cost of downtime and service calls and also increase revenue by bringing distributed sites online faster.

Digi management solutions provide easy setup, configuration and maintenance of large installations of remote Digi TransPort devices. Digi Remote Manager® offers web-based device management for remote Digi cellular routers, gateways and third-party devices.

BENEFITS:

- Global HSPA+ and 4G LTE support and certification
- Extremely resilient cellular connection through patented Digi SureLink™, VRRP+ protocol and dual SIM slots
- Enterprise routing features for security, logging and redundancy (e.g., stateful firewall, VPN, SNMP); no annual enterprise software license required
- Digi Remote Manager provides mass configuration, device management and troubleshooting tools
- Rugged aluminum enclosure, flanges and optional DIN rail clip for flexible mounting
- 5-year warranty standard—no additional cost

APPLICATION EXAMPLE



RELATED PRODUCTS



Digi TransPort®
WR21



Digi TransPort®
WR31



Digi TransPort®
WR44 R



Accessories



Digi Remote
Manager®

SPECIFICATIONS

Digi TransPort® WR11 XT

CELLULAR

| | |
|---------------------------------|--|
| LTE - EMEA (M3) | LTE CAT 1: 800(B20)/900(B8)/1800(B3)/2100(B1)/2600 (B7) 2G EDGE: 900/1800 MHz Transfer rate (max): 10 Mbps down, 5 Mbps up |
| LTE - UNITED STATES (M4) | LTE CAT 1: 700(B12)/850(B5,B26)/AWS(B4)/1900(B2,B25) Transfer rate (max): 10 Mbps down, 5 Mbps up Approvals: Sprint (pending) |
| LTE - NORTH AMERICA (M6) | LTE CAT 1: 700(B12,B13)/850(B5)/AWS(B4)/1900(B2) HSPA+: 850/1900 MHz Transfer rate (max): 10 Mbps down, 5 Mbps up Approvals: PTCRB, AT&T, Telus (pending) |
| LTE - ANZ/LATAM (M9) | LTE CAT 1: 700(B28)/850(B5)/900(B8)/1800(B3)/2100(B1) 3G HSPA+: 850/900/2100 MHz Transfer rate (max): 10 Mbps down, 5 Mbps up |
| GLOBAL HSPA+ - (U9) | 3G HSPA+: 850/900/1700AWS/1900/2100 MHz 2G EDGE/GPRS: 850/900/1800/1900 MHz Transfer rate (max): 21 Mbps down, 5.76 Mbps up Approvals: PTCRB, Vodafone |

| | |
|---------------------|---|
| CONNECTORS | (2) 50 Ω SMA (center pin: female); (1) connector for non-LTE models |
| SIM SLOTS | (2) Mini-SIM (2FF) |
| SIM SECURITY | Screw-down SIM cover |

SOFTWARE & MANAGEMENT

| | |
|---|---|
| REMOTE MANAGEMENT | Digi Remote Manager® (cloud based); SNMP v1/v2c/v3 (user installed/managed) |
| LOCAL MANAGEMENT | WebUI (HTTP/HTTPS); CLI (Telnet, SSH, SMS) |
| MANAGEMENT/TROUBLESHOOTING TOOLS | FTP, SFTP, SCP; Protocol analyzer with PCAP for Wireshark; Event logging with Syslog and SMTP; NTP/SNTP |
| MEMORY | 20 MB RAM, 10 MB file space |

ETHERNET

| | |
|--------------|---------------------------------------|
| PORTS | (1) RJ-45; 10/100 Mbps (auto-sensing) |
|--------------|---------------------------------------|

PHYSICAL

| | |
|-------------------------------|---|
| DIMENSIONS (L X W X H) | 3 in x 4 in x 1 in (7.62 cm x 10.16 cm x 2.54 cm) |
| WEIGHT | 0.5 lb (.22 kg) |
| STATUS LEDS | Power on, WWAN signal strength, WWAN service |
| ENCLOSURE | Industrial (Metal) / IP30 |

POWER REQUIREMENTS

| | |
|--------------------------|--|
| POWER INPUT | 5 VDC, 15W minimum power source required |
| POWER SUPPLY | Must be used with a Digi approved power supply |
| POWER CONSUMPTION | 3.5W typical (Idle); 10W typical (Peak Tx/Rx) |

ENVIRONMENTAL

| | |
|------------------------------|--|
| OPERATING TEMPERATURE | -30° C to +70° C (-22° F to +158° F) reduced cellular performance may occur above +60° C |
| RELATIVE HUMIDITY | 5% to 95% (non-condensing) |

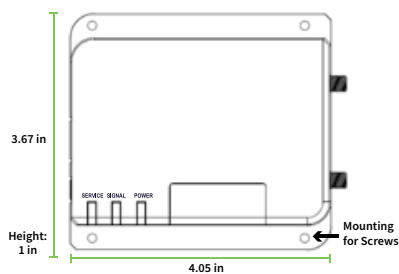
APPROVALS

| | |
|---------------------------|--|
| CELLULAR | PTCRB |
| SAFETY | UL 60950, CSA 22.2 No. 60950, EN60950 |
| EMISSIONS/IMMUNITY | CE, FCC Part 15 Class B, AS/NZS CISPR 22, EN55024, EN55022 Class B |

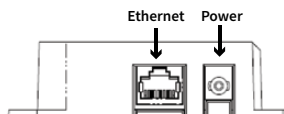
WARRANTY

| | |
|-------------------------|---------|
| PRODUCT WARRANTY | 5 years |
|-------------------------|---------|

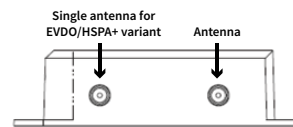
DIGI TRANSPORT® WR11 XT - TOP



LEFT SIDE

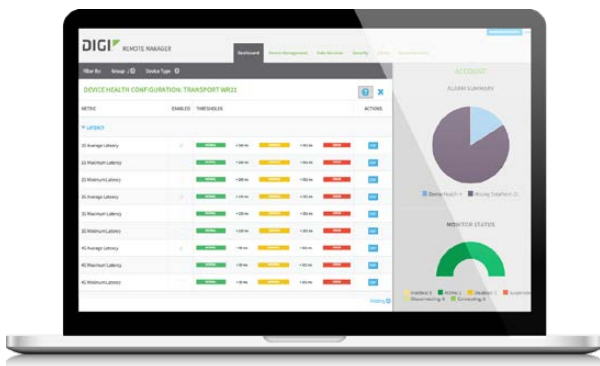


RIGHT SIDE



| ENTERPRISE SOFTWARE | DESCRIPTION |
|-------------------------|--|
| PROTOCOL SUPPORT | HTTP, HTTPS, FTP, SFTP, SSL, SMTP, SNMP (v1/v2c/v3), SSH, Telnet and CLI for web management; Remote management via Digi Remote Manager; SMS management, protocol analyzer, ability to capture PCAP for use with Wireshark; DynDNS; Dynamic DNS client compatible with BIND9/No-IP/DynDNS |
| SECURITY/VPN | IP filtering, stateful inspection firewall with scripting, address and port translation; VPN: IPSec with IKEv1, IKEv2, NAT Traversal; SSL, SSLv2, SSLv3, FIPS 197, open VPN client and server; PPTP, L2TP; (5) VPN tunnels (upgradable to a maximum of 50); Cryptology: SHA-1, MD5, RSA; Encryption: DES, 3DES and AES up to 256-bit (CBC mode for IPsec); Authentication: RADIUS, TACACS+, SCEP for X.509; certificates; Content filtering (via 3rd party); MAC address filtering; VLAN support |
| ROUTING/FAILOVER | IP pass-through; NAT, NAPT with IP port forwarding; Ethernet bridging; GRE; Multicast routing; Routing protocols: PPP, PPPoE, RIP (v1, v2) OSPF, SRI, BGP, iGMP routing (multicast); RSTP (Rapid Spanning Tree Protocol); IP failover: VRRP, VRRP+TM; Automatic failover/ failback to second GSM network/standby APN |
| OTHER PROTOCOLS | DHCP; Dynamic DNS client compatible with BIND9/No-IP/DynDNS; QoS via TOS/DSCP/WRED |

DIGI REMOTE MANAGER®



CAPABILITIES

- Centralized management of remote devices over 3G/4G/LTE
- Define standard configurations and automatically monitor individual devices for PCI security compliance
- Report and alert on performance statistics, including connection history, signal quality, latency, data usage and packet loss
- No servers or applications to operate and maintain
- Complete tasks for your entire device network in minutes
- Edit configurations and update firmware for your individual devices or groups
- Monitor the status and location of your remote device via a web browser
- Active or deactivate cellular lines and monitor data to ensure you never incur overage charges

INFRASTRUCTURE

- Hosted in a commercial-grade SAS 70-certified environment
- Superior availability, operating to 99.9% or greater
- Open APIs available to support application development

SECURITY

- Certified SSAE-16 and ISO27001 facilities
- Over 175 Security Controls in place to protect your data
- Enables compliance with security frameworks like PCI, HIPAA, NIST and more
- Earned SkyHigh's Cloud Trust Program highest ranking of Enterprise-Ready

| PART NUMBERS | DIGI TRANSPORT WR11 XT |
|------------------|------------------------|
| WR11-M300-DE1-XB | 4G LTE EMEA/APAC |
| WR11-M400-DE1-XB | 4G LTE Sprint |
| WR11-M600-DE1-XB | 4G LTE North America |
| WR11-M900-DE1-XB | 4G LTE LATAM/ANZ |
| WR11-U900-DE1-XW | HSPA+ Global |

| PART NUMBERS | ACCESSORIES* |
|--------------|---|
| 76002065 | Accessory Kit DC - Includes DC/DC power supply (9-30 VDC / 5 VDC), ethernet cable and antennas (2) |
| 76002062 | Accessory Kit AC - Includes AC/DC power supply (US), ethernet cable and antennas (2) |
| 76002063 | Accessory Kit AC Intl - Includes AC/DC power supply (Intl plugs), ethernet cable and antennas (2) |
| 76002064 | Accessory Kit Ext Temp AC - Includes AC/DC power supply (-30° C to +70° C), ethernet cable and antennas (2) |

*Sold separately, unless otherwise noted.

DIGI SERVICE AND SUPPORT / You can purchase with confidence knowing that Digi is always available to serve you with expert technical support and our industry leading warranty. For detailed information visit www.digi.com/support.

© 1996-2018 Digi International Inc. All rights reserved.
All trademarks are the property of their respective owners.

DIGI INTERNATIONAL WORLDWIDE HQ
877-912-3444 / 952-912-3444 / www.digi.com

DIGI INTERNATIONAL GERMANY
+49-89-540-428-0

DIGI INTERNATIONAL JAPAN
+81-3-5428-0261 / www.digi-intl.co.jp

DIGI INTERNATIONAL SINGAPORE
+65-6213-5380

DIGI INTERNATIONAL CHINA
+86-21-50492199 / www.digi.com.cn

91004202
A2/1217



X-ON Electronics

Largest Supplier of Electrical and Electronic Components

Click to view similar products for [Routers category](#):

Click to view products by [Digi International manufacturer](#):

Other Similar products are found below :

[LR54-AA401](#) [WR44-L900-AE1-RF](#) [WR31-U92A-DE1-TB](#) [SR30500020-SWH](#) [SR30510120](#) [SR30508010](#) [SR30500410](#) [UR2B612011](#)
[UR2L610011-SWH](#) [UR2L610710](#) [BB-ERT311](#) [BB-UR2B610011](#) [BB-UR2B610021](#) [SL30210110-SWH](#) [SL30210110-XSWH](#) [SR30010110-](#)
[SWH](#) [SR30510420-SWH](#) [SR30500420-SWH](#) [SR30518120-SWH](#) [XR2F000711](#) [ASB-631R-DX06-OUS](#) [TX64-A121](#) [X2E-Z1R-E1-W](#) [X2E-](#)
[Z1R-W1-W](#) [X2E-Z1R-E1-A](#) [E224HPL2S](#) [1153078](#) [1153079](#) [2702529](#) [RUT24006E000](#) [RUT950U022C0](#) [RUTX09000000](#) [RUTX11000000](#)
[FS-BENG-C](#) [FS-Router-BAC2](#) [IX14-M601](#) [RUT300000000](#) [RUT360000000](#) [RUT950V022C0](#) [RUT950K02400](#) [RUT950U025A0](#)
[RUT955M036V0](#) [RUT955T033B0](#) [RUT955J034S0](#) [RUT955M03690](#) [RUT955T03530](#) [RUTX12000000](#) [WR11-C100-DE1-SU](#) [WR21-L82B-](#)
[DE1-SU](#) [WLNN-ER-DP551](#)