



4G LTE  
M2M ROUTER



# DIGI TRANSPORT WR31

Intelligent 4G LTE router designed for critical infrastructure and industrial applications

Digi TransPort® WR31 is an intelligent 4G LTE router designed for performance and reliability across a range of critical infrastructure and industrial applications. It provides a secure, reliable connection to industrial controllers, process automation equipment and smart grid assets on third party sites or remote locations. Software-defined, multi-carrier networking and global LTE and HSPA+ options make it easy to get connected. This drop-in connectivity gives operators a way to reduce downtime and service calls, and also increase revenue by bringing distributed sites online faster.

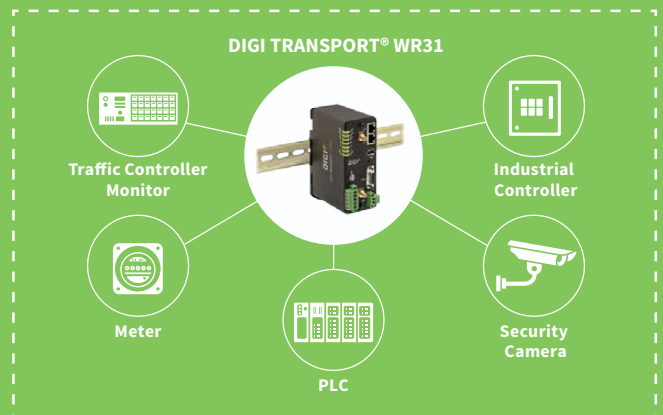
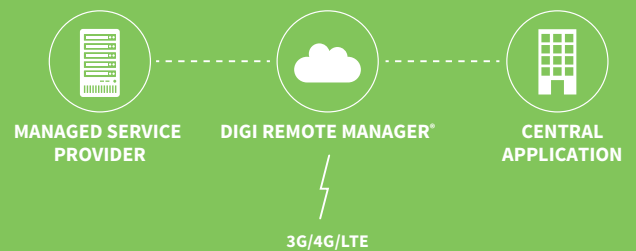
## Ideal for connecting:

- Building and process automation controllers
- Smart grid assets (meters, switches, controllers)
- IP cameras and access controllers
- Remote data loggers, flow meters and sensing equipment
- Telco infrastructure
- Traffic and obstruction lighting

## BENEFITS

- Global HSPA+ and 4G LTE support and certification on major carrier networks around the world
- Ethernet, serial I/O and Modbus bridging
- Extremely resilient cellular connection through Digi's patented SureLink™, VRRP+ protocol and dual SIM slots
- Dedicated GNSS Receiver supporting GPS, GLONASS, BeiDou, Galileo
- License-free enterprise software: VPN, firewall, logging and authentication
- Digi Remote Manager® device management tool
- Rugged enclosure, optimized for DIN rail or shelf mounting
- C1D2 and ATEX rated; NEMA TS2 temperature rated
- Digi Foundations™ 1-, 3- or 5-year subscription available

## APPLICATION EXAMPLE



## RELATED PRODUCTS



Digi TransPort®  
WR21



Digi TransPort®  
WR44 R



Digi Connect®  
Sensor+



Accessories



Digi Remote  
Manager®

## SPECIFICATIONS

## Digi TransPort® WR31

## WIRELESS INTERFACES

## CELLULAR

LTE - ANZ/LATAM (L9)	LTE-Advanced Cat 6: 700(B28)/850(B5,B18,B19)/900(B8)/1500(B21)/1800(B3)/1900(B39)/2100(B1)/2600(B7,B38)/2300(B40)/2500(B41) 3G HSPA+: 800/850/900/1700/2100 MHz Transfer rate (max): 300 Mbps down, 50 Mbps up GNSS: 30 channels (16 GPS, 14 GLONASS) simultaneous tracking
LTE - NORTH AMERICA (M8)	LTE-Advanced Cat 6: 700(B12,B13,B29)/800(B20,B26)/850(B5)/900(B8)/AWS(B4)/1800(B3)/1900(B2,B25)/2100(B1)/2300(B30)/2500(B41)/2600(B7) 3G HSPA+: 850/900/AWS/1800/1900/2100 MHz Transfer rate (max): 300 Mbps down, 50 Mbps up GNSS: 30 channels (16 GPS, 14 GLONASS) simultaneous tracking
LTE - NORTH AMERICA (M5)	LTE Cat 4: 700(B12,13)/850(B5)/AWS(B4)/1900(B2) 3G HSPA+: 850/1900 MHz Transfer rate (max): 150 Mbps down, 50 Mbps up
LTE - EMEA/APAC (M7)	LTE Cat 4: 800(B20)/900(B8)/1800(B3)/2100(B1)/2600(B7) HSPA: 900/2100 MHz EDGE: 900/1800 MHz Transfer rate (max): 150 Mbps down, 50 Mbps up
LTE 450 - EMEA/APAC (M2)	LTE Cat 3: 450(B31)/800(B20)/1800(B3)/2600 (B7) HSPA+: 900/2100 MHz EDGE: 900/1800 MHz Transfer rate (max): 100 Mbps down, 50 Mbps up
GLOBAL HSPA+ (U9)	3G HSPA+: 850/900/1700/AWS/1900/2100 MHz 2G EDGE/GPRS: 850/900/1800/1900 MHz Transfer rate (max): 21 Mbps down, 5.76 Mbps up
CDMA EV-DO 450 MHZ - EMEA (D5)	3G EVDO Rev B: 450 MHz 2G 1XRTT: 450 MHz Transfer rate (max): 14.7 Mbps down, 5.4 Mbps up
CONNECTORS	(2) 50 Ω SMA (center pin: female)
SIM SLOTS	(2) Mini-SIM (2FF)
SIM SECURITY	Screw-down SIM cover
GNSS (SELECT MODELS)	Protocol NMEA 0183 V3.0 Acquisition Time Hot Start 1 s; Warm Start 29 s; Cold Start 32 s Accuracy Horizontal: < 2 m (50%), < 5 m (90%); Altitude: < 4 m (50%), < 8 m (90%); Velocity: < 0.2 m/s

## SOFTWARE &amp; MANAGEMENT

REMOTE MANAGEMENT	Digi Remote Manager® (cloud based); SNMP v1/v2c/v3 (user installed/managed)
LOCAL MANAGEMENT	WebUI (HTTP/HTTPS); CLI (Telnet, SSH, SMS)
MANAGEMENT/ TROUBLESHOOTING TOOLS	FTP, SFTP, SCP; protocol analyzer with PCAP for Wireshark; event logging with Syslog and SMTP; NTP/SNTP

## WIRED INTERFACES

## ETHERNET

PORTS	(2) RJ-45; 10/100 Mbps (auto-sensing)
-------	---------------------------------------

## SERIAL

PORTS	(1) DB-9; DCE
STANDARD	RS-232/422/485
SIGNAL SUPPORT	TXD, RXD, RTS, CTS, DTR, DCD, DSR, RI
FLOW CONTROL	Software (XON/XOFF), hardware supported

## I/O

CONNECTOR	5-pin screw down terminal block
DIGITAL	0-30 VDC, 200 mA max.; (2) I/O, software -selectable
ANALOG	(1) analog I/O; 4-20 mA or 0-10V, software selectable; 12 bit resolution

## USB

PORTS	(1) USB 2.0 Type A
-------	--------------------

## PHYSICAL

DIMENSIONS (L X W X H)	12.7 cm x 8.9 cm x 5.1 cm (5 in x 3.5 in x 2 in)
WEIGHT	.5 kg (1.1 lb.)
STATUS LEDs	Power, service, WWAN, 3x signal strength, user programmable
ENCLOSURE/RATING	Aluminum / IP30
MOUNTING	DIN rail mount included

## SPECIFICATIONS

## Digi TransPort® WR31


### POWER REQUIREMENTS

<b>POWER INPUT</b>	9 – 30 VDC, 18 W min power source required
<b>POWER CONNECTOR</b>	Screw down removable terminal block
<b>POWER CONSUMPTION</b>	4 W typical (Idle); 12 W typical (Peak Tx/Rx)

### ENVIRONMENTAL

<b>HAZARDOUS (CLASS 1 DIV 2)</b>	Yes
<b>OPERATING TEMPERATURE</b>	-34° C to 74° C (-29° F to 165° F); reduced cellular performance may occur above 60° C (140° F)
<b>STORAGE TEMPERATURE</b>	-40° C to 85° C (-40° F to 185° F)
<b>ETHERNET ISOLATION</b>	1.5 kV RMS
<b>SERIAL PORT PROTECTION (ESD)</b>	15 kV
<b>RELATIVE HUMIDITY</b>	5% to 95% (non-condensing)

### APPROVALS

<b>CELLULAR</b>	PTCRB
<b>SAFETY</b>	Hazardous locations: ANSI/ISA-12.12.01-2015, CAN/CSA C22.2 NO.213-15 Ordinary locations: UL 60950-1, 2nd Edition, 2014-10-14; UL 62368: 2014, 2nd Edition ATEX standards: Protection method  II 3 G Ex nA IIC T4 Gc EN 60079-0:2012+A11:2013, EN 60079-15:2010, DEMKO 15 ATEX 1574X Rev. 1
<b>IECEX STANDARDS</b>	US/UL/ExTR17.0077/00
<b>EMISSIONS/IMMUNITY</b>	CE, FCC Part 15 Class B, AS/NZS CISPR 22, EN55024, EN55022 Class B

### WARRANTY

<b>PRODUCT WARRANTY</b>	3-year + Digi Foundations*
-------------------------	----------------------------

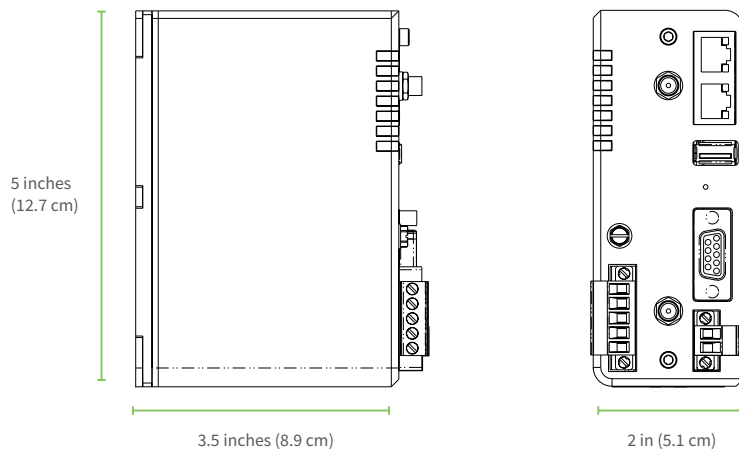
\*Digi Foundations can extend the standard three-year warranty to a Limited Lifetime Warranty that provides replacement with a new or similar Digi product for a period of five years from the date of purchase. After five years from the purchase date, the warranty value will revert to a 40 percent credit towards the MSRP of an equivalent product from Digi.

## ENTERPRISE SOFTWARE

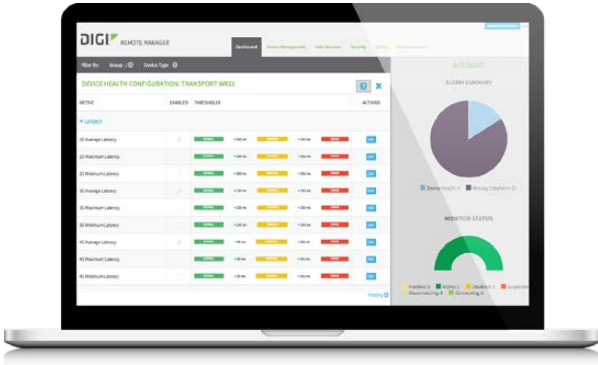
## DESCRIPTION

<b>PROTOCOL SUPPORT</b>	HTTP, HTTPS, FTP, SFTP, SSL, SNMP, SNMP (v1/v2c/v3), SSH, Telnet and CLI for web management; remote management via Digi Remote Manager; SMS management, protocol analyzer, ability to capture PCAP for use with Wireshark; DynDNS, Dynamic DNS client compatible with BIND9/No-IP/DynDNS
<b>SECURITY/VPN</b>	IP filtering, stateful inspection firewall with scripting, address and port translation; VPN: IPSec with IKEv1, IKEv2, NAT Traversal; SSL, SSLv2, SSLv3, FIPS 197, Open VPN client and server; PPTP, L2TP; (5) VPN tunnels (not upgradable); cryptology: SHA-1, MD5, RSA; encryption: DES, 3DES and AES up to 256-bit (CBC mode for IPsec); authentication: RADIUS, TACACS+, SCEP for X.509; certificates; content filtering (via 3rd party); MAC address filtering; VLAN support
<b>ROUTING/FAILOVER</b>	IP pass-through; NAT, NAPT with IP port forwarding; Ethernet bridging; GRE; multicast routing; routing protocols: PPP, PPPoE, RIP (v1, v2) OSPF, SRI, BGP, iGMP routing (multicast); IP failover: VRRP, VRRP+TM; automatic failover/failback to second GSM network/standby APN
<b>OTHER PROTOCOLS</b>	DDHCP; Dynamic DNS client compatible with BIND9/No-IP/DynDNS; QoS via TOS/DSCP/WRED; Modbus UDP/TCP to serial; X.25 including XOT, SNA/IP, TPAD and PAD; protocol switch; Modbus bridging for connecting diverse field assets

## PRODUCT IMAGES



## DIGI REMOTE MANAGER®



### INFRASTRUCTURE

- Hosted in a commercial-grade SAS 70-certified environment
- Superior availability, operating to 99.9% or greater
- Open APIs available to support application development

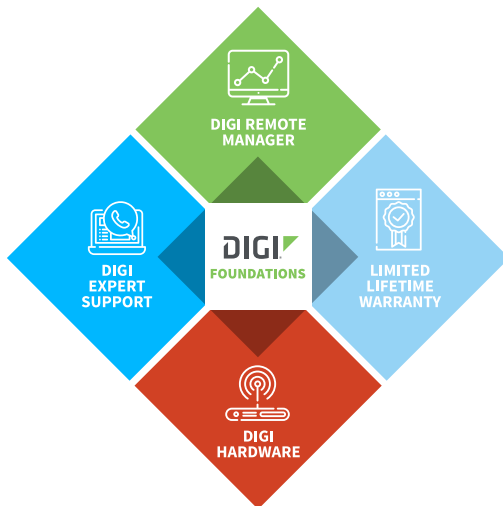
### CAPABILITIES

- Centralized management of remote devices over 3G/4G/LTE
- Define standard configurations and automatically monitor individual devices for PCI security compliance
- Report and alert on performance statistics, including connection history, signal quality, latency, data usage and packet loss
- No servers or applications to operate and maintain
- Complete tasks for your entire device network in minutes
- Edit configurations and update firmware for your individual devices or groups
- Monitor the status and location of your remote device via a web browser
- Active or deactivate cellular lines and monitor data to ensure you never incur overage charges

### SECURITY

- Certified SSAE-16 facilities
- Over 175 security controls in place to protect your data
- Enables compliance with security frameworks like PCI, HIPAA, NIST and more
- Earned SkyHigh's Cloud Trust Program highest ranking of Enterprise-ready
- PCI certified; Attestation of Compliance

## DIGI FOUNDATIONS™



### IT'S TIME TO CONNECT WITH CONFIDENCE

The convenient, comprehensive and secure way to integrate IoT communications hardware, device management software, global support and lifetime warranty protection into a connectivity solution to simplify your IoT network growth.

- [Digi Remote Manager®](#) (DRM) gives you a single point of contact, command and control with sophisticated remote device monitoring and management tools.
- [Digi Expert Support](#) is available around the clock, seven days a week, around the world with experts ready to provide technical support by phone, email or online.
- [Digi Limited Lifetime Warranty](#) lowers the total cost of ownership with hardware protection and equipment upgrades to expand your network as needs evolve.

Digi Foundations, with DRM, simplifies network and device management – for hundreds or hundreds-of-thousands of Digi or third-party devices – with options to upgrade as technology evolves. Isn't it time you got better connected?

For more information visit: [digi.com/foundations](http://digi.com/foundations)

PART NUMBERS	DIGI TRANSPORT WR31
WR31-M82A-DE1-TB	Digi TransPort WR31 - 4G LTE North America/EMEA, dual Ethernet, RS-232/422/485, Class 1 Div 2 (C1D2)
WR31-L92A-DE1-TB	Digi TransPort WR31 - 4G LTE LATAM/ANZ, dual Ethernet, RS-232/422/485, ATEX
WR31-M52A-DE1-TB	Digi TransPort WR31 - 4G LTE North America, dual Ethernet, RS-232/422/485, Class 1 Div 2 (C1D2)
WR31-M72A-DE1-TB	Digi TransPort WR31 - 4G LTE EMEA/APAC, dual Ethernet, RS-232/422/485, ATEX
WR31-M22A-DE1-TB	Digi TransPort WR31 - 4G LTE EMEA/APAC (450MHz), dual Ethernet, RS-232/422/485, ATEX
WR31-U92A-DE1-TB	Digi TransPort WR31 - HSPA+ Global, dual Ethernet, RS-232/422/485, Class 1 Div 2 (C1D2)
WR31-D52A-DE1-TB	Digi TransPort WR31 - CDMA 450MHz, dual Ethernet, RS-232/422/485, ATEX

DIGI FOUNDATIONS™	AVAILABLE FOR DIGI TRANSPORT WR31
DGF-BDL-STAN-1YR	Digi Foundations add-on, 1 year, includes Expert Support, Digi Remote Manager, and Limited Lifetime Warranty
DGF-BDL-STAN-3YR	Digi Foundations add-on, 3 years, includes Expert Support, Digi Remote Manager, and Limited Lifetime Warranty
DGF-BDL-STAN-5YR	Digi Foundations add-on, 5 years, includes Expert Support, Digi Remote Manager, and Limited Lifetime Warranty

PART NUMBERS	ACCESSORIES*
76000926	Antenna - cellular, 3G/4G/LTE
76000954	Antenna base – SMA, 1 m, RG174
76000736	AC power supply - extd temperature, US and EU power cords to 12 VDC - 2.1 mm locking barrel plug
76000966	Mounting bracket – wall mount
76000977	Mounting bracket – DIN rail
76000826	Cable - Ethernet, RJ-45 to RJ-45, 2 m

\*Sold separately, unless otherwise noted.

FOR MORE INFORMATION  
PLEASE VISIT [Digi.com](http://Digi.com)

**DIGI SERVICE AND SUPPORT** / You can purchase with confidence knowing that Digi is always available to serve you with expert technical support and our industry leading warranty. For detailed information visit [www.digi.com/support](http://www.digi.com/support).

© 1996-2019 Digi International Inc. All rights reserved.  
All trademarks are the property of their respective owners.

91003183  
C1/1019

**DIGI INTERNATIONAL WORLDWIDE HQ**  
877-912-3444 / 952-912-3444 / [www.digi.com](http://www.digi.com)

**DIGI INTERNATIONAL GERMANY**  
+49-89-540-428-0

**DIGI INTERNATIONAL JAPAN**  
+81-3-5428-0261 / [www.digi-intl.co.jp](http://www.digi-intl.co.jp)

**DIGI INTERNATIONAL SINGAPORE**  
+65-6213-5380

**DIGI INTERNATIONAL CHINA**  
+86-21-50492199 / [www.digi.com.cn](http://www.digi.com.cn)



## X-ON Electronics

Largest Supplier of Electrical and Electronic Components

*Click to view similar products for [Routers category](#):*

*Click to view products by [Digi International manufacturer](#):*

Other Similar products are found below :

[LR54-AA401](#) [WR44-L900-AE1-RF](#) [WR31-U92A-DE1-TB](#) [SR30500020-SWH](#) [SR30510120](#) [SR30508010](#) [SR30500410](#) [UR2B612011](#)  
[UR2L610011-SWH](#) [UR2L610710](#) [BB-ERT311](#) [BB-UR2B610011](#) [BB-UR2B610021](#) [SL30210110-SWH](#) [SL30210110-XSWH](#) [SR30010110-](#)  
[SWH](#) [SR30510420-SWH](#) [SR30500420-SWH](#) [SR30518120-SWH](#) [XR2F000711](#) [ASB-631R-DX06-OUS](#) [TX64-A121](#) [X2E-Z1R-E1-W](#) [X2E-](#)  
[Z1R-W1-W](#) [X2E-Z1R-E1-A](#) [E224HPL2S](#) [1153078](#) [1153079](#) [2702529](#) [RUT24006E000](#) [RUT950U022C0](#) [RUTX09000000](#) [RUTX11000000](#)  
[FS-BENG-C](#) [FS-Router-BAC2](#) [IX14-M601](#) [RUT300000000](#) [RUT360000000](#) [RUT950V022C0](#) [RUT950K02400](#) [RUT950U025A0](#)  
[RUT955M036V0](#) [RUT955T033B0](#) [RUT955J034S0](#) [RUT955M03690](#) [RUT955T03530](#) [RUTX12000000](#) [WR11-C100-DE1-SU](#) [WR21-L82B-](#)  
[DE1-SU](#) [WLNN-ER-DP551](#)