



DIGI XBEE TO IP  
GATEWAY WITH CLOUD  
MANAGEMENT SERVICES



# DIGI XBEE GATEWAY FAMILY

Programmable gateway connects Digi XBee devices to cloud-based applications over cellular, Wi-Fi or Ethernet

Digi XBee® Gateway provides a low-cost Digi XBee to IP solution, featuring scalable remote configuration and management of Digi XBee networks with Digi Remote Manager® (DRM). By default, all Digi XBee data sent to the gateway is automatically available to online applications via Digi Remote Manager.

With a simple, open-source Python development environment, this gateway also enables custom applications to run locally while interfacing across existing Ethernet/Wi-Fi/cellular networks for WAN connectivity to cloud-based software applications.

Digi XBee Gateway products can be managed remotely via Digi Remote Manager, allowing users to remotely manage thousands of deployed devices, supporting features like remote firmware upgrades and event alarms.

Digi XBee Gateway can be tested and developed using the Digi XBee ZigBee Cloud Kit, which fully integrates the Digi XBee Gateway, Digi XBee Module, Digi Remote Manager and a sample web application into a cohesive internet-connected solution. This kit is a powerful tool that enables developers to create internet-connected prototypes in 30 minutes or less.

## BENEFITS

- Open Source Python environment for custom application development on the gateway
- Out-of-box integration with Digi Remote Manager® enables remote connectivity, configuration and management of Digi XBee networks
- Secure, scalable access to an unlimited number of remote Digi XBee-based devices
- Cellular, Wi-Fi and Ethernet WAN options for flexible broadband connectivity
- Digi Foundations™ 1-, 3- or 5-year subscription available

## RELATED PRODUCTS



Modules



Adapters



Sensors

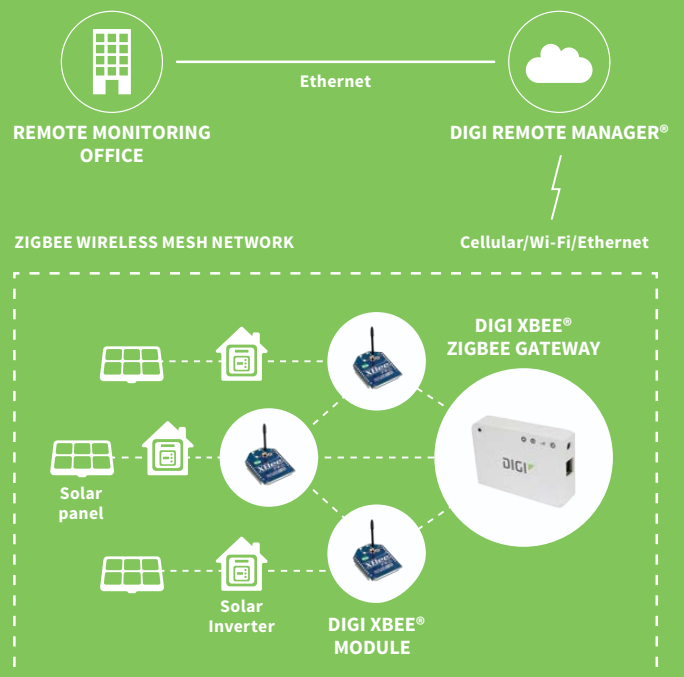


Range  
Extenders



Development  
Kits

## APPLICATION EXAMPLE



## DIGI REMOTE MANAGER

CONNECTING ANY APPLICATION TO ANYTHING, ANYWHERE  
YOUR BRAND, YOUR FIRMWARE AND CONFIGURATION

Digi Remote Manager is a public, platform-as-a-service (PaaS) that allows organizations to redefine the way they run their business and transform their customers' experience through remote management of assets and development of solutions to reduce costs and drive efficiencies.

Digi Remote Manager enables organizations to connect any device, sensor or machine, located anywhere in the world, to the internet and doing so provides new insights to drive those business efficiencies.

Businesses can gain new intelligence through data visualization, increase efficiency of operations by managing devices en masse, and keep their data safe in the cloud with the Digi Remote Manager platform.

### BENEFITS

- Out-of-the-box compatibility with Digi hardware
- Easy application integration and open APIs
- No costly infrastructure to operate or maintain
- Multi-tenant, cloud-based architecture
- Manage devices en masse
- Two-way device to cloud communication
- Asynchronous event updates and alerts
- Reliable, scalable and secure
- Broadcast network grade service ability - operating 99.9% or greater
- Dedicated Security Office

## PRIVATE LABELING

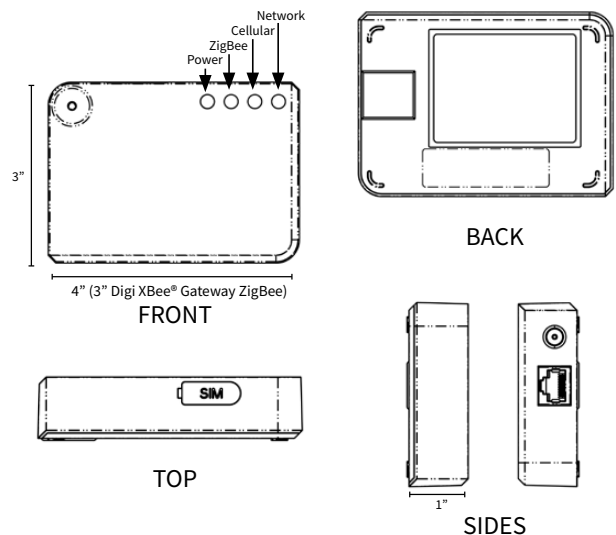
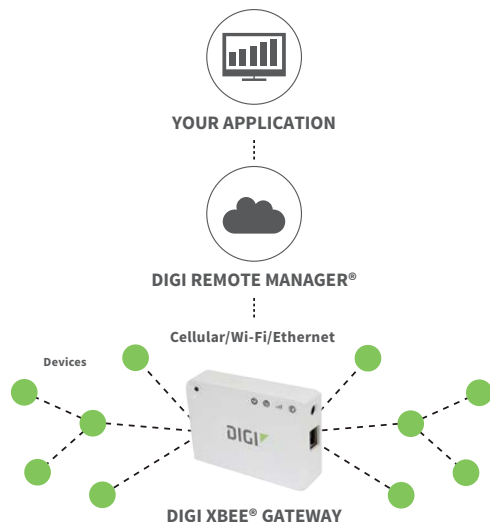
YOUR BRAND, YOUR FIRMWARE AND CONFIGURATION

Digi knows that a gateway is only one part of our customers' complex market offering. We are therefore pleased to offer a simple private branding process as a value-add to the Digi XBee Gateway product family.

For a fixed initial charge and a minimum order commitment, Digi customers get a custom part number with their brand, fixed (or "frozen") firmware, and custom default configuration.

### BENEFITS

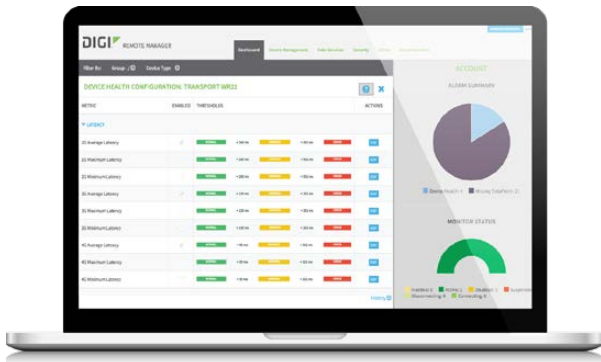
- Place your brand on the enclosure
- Pre-load your specific firmware and configuration
- All for a fixed price



SPECIFICATIONS		Digi XBee® Gateway	Digi XBee® Gateway - Cellular
<b>GENERAL</b>			
<b>MANAGEMENT</b>	Secure enterprise management via Digi Remote Manager		
<b>PROTOCOLS</b>	UDP/TCP, DHCP		
<b>LEDS</b>	Power, network (LAN/WAN), ZigBee (HAN/PAN)	Power, network (LAN/WAN), ZigBee (HAN/PAN), cellular signal strength	
<b>SECURITY</b>	SSL tunnels, WEP-40, WEP-104, WPA/WPA2, authentication with PSK and EAP	SSL tunnels, cellular network security	
<b>DIMENSIONS (L X W X H)</b>	7.62 cm x 7.62 cm x 2.54 cm (3 in x 3 in x 1 in)	7.62 cm x 10.16 cm x 2.54 cm (3 in x 4 in x 1 in)	
<b>DEVELOPMENT</b>			
<b>PYTHON VERSION</b>	2.7.1		
<b>OPERATING SYSTEM</b>	Digi Embedded Linux		
<b>DIGI XBEE GATEWAY APPLICATION</b>	Digi XBee data sent to the gateway is automatically available to online applications via Digi Remote Manager		
<b>PROCESSOR AND MEMORY (VARIES BY FIRMWARE AND OS VERSION)</b>	Freescale i.MX28, 20 MB RAM, 10 MB file space		
<b>ZIGBEE</b>			
<b>ZIGBEE STACK</b>	ZigBee PRO Feature Set, Ember EM357		
<b>ZIGBEE MODULE</b>	Digi XBee® ZB SMT (S2C)		
<b>TRANSMIT POWER/RECEIVE SENSITIVITY</b>	Worldwide version: Digi XBee ZB SMT transmit power 6.3 mW (+8 dBm); receiver sensitivity (1% PER) -102 dBm; North American version: Digi XBee-PRO® ZB SMT transmit power: 63 mW (+18 dBm); receiver sensitivity (1% PER) -102 dBmP		
<b>CELLULAR</b>			
<b>CELLULAR MODULE</b>	N/A	Telit 910 Series	
<b>GSM BANDS</b>	N/A	800/850/900/AWS/1900/2100 MHz 3G/UMTS	
<b>CDMA BANDS</b>	N/A	800/1900 MHz 1x RTT	
<b>WI-FI</b>			
<b>802.11</b>	b/g/n	N/A	
<b>DATA RATE</b>	Up to 72.2 Mbps	N/A	
<b>TRANSMIT POWER</b>	18 dBm typical (varies by mode, channel and region)	N/A	
<b>RECEIVER SENSITIVITY</b>	Up to -87 dBm @ 11 Mbps	N/A	
<b>MODES</b>	AP client modes only; access point mode not supported	N/A	
<b>ETHERNET</b>			
<b>PORTS</b>	1 RJ-45 port		
<b>PHYSICAL LAYER</b>	10/100 Base-T		
<b>ROUTING</b>	Ethernet port designed for configuration and WAN backhaul		
<b>POWER REQUIREMENTS</b>			
<b>POWER SUPPLY</b>	5 VDC power supply with barrel connector included		
<b>POWER CONSUMPTION</b>	Typical: 1.2 W, Max: 2.5 W	Typical: 3.5 W, Max: 15 W	
<b>ENVIRONMENTAL</b>			
<b>OPERATING TEMPERATURE</b>	0° C to 40° C (32° F to 104° F)		
<b>RELATIVE HUMIDITY</b>	5% to 95% (non-condensing)		
<b>REGULATORY APPROVALS</b>			
<b>MOBILE CERTIFICATIONS (GSM)</b>	N/A	AT&T	
<b>MOBILE CERTIFICATIONS (CDMA)</b>	N/A	Verizon and Sprint	
<b>SAFETY</b>	UL 60950-1, CSA C22.2 and EN 60950-1		
<b>EMISSIONS/IMMUNITY/TRANSMITTER</b>	CE, FCC Part 15 (Class B), IC, ETSI		
<b>WARRANTY</b>			
<b>PRODUCT WARRANTY</b>	3-year + Digi Foundations*		

\*Digi Foundations can extend the standard three-year warranty to a Limited Lifetime Warranty that provides replacement with a new or similar Digi product for a period of five years from the date of purchase. After five years from the purchase date, the warranty value will revert to a 40 percent credit towards the MSRP of an equivalent product from Digi.

## DIGI REMOTE MANAGER®



### INFRASTRUCTURE

- Hosted in a commercial-grade SAS 70-certified environment
- Superior availability, operating to 99.9% or greater
- Open APIs available to support application development

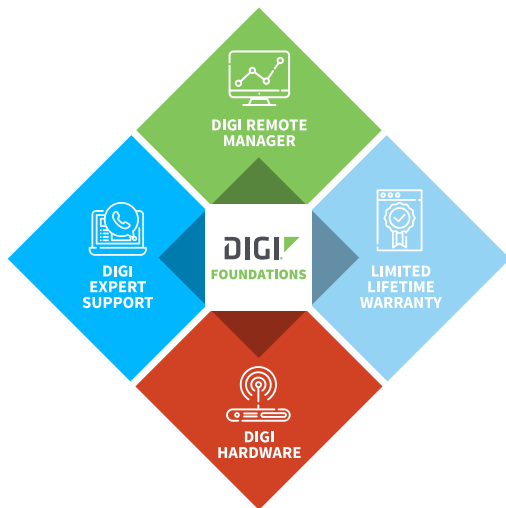
### CAPABILITIES

- Centralized management of remote devices over 3G/4G/LTE
- Define standard configurations and automatically monitor individual devices for PCI security compliance
- Report and alert on performance statistics, including connection history, signal quality, latency, data usage and packet loss
- No servers or applications to operate and maintain
- Complete tasks for your entire device network in minutes
- Edit configurations and update firmware for your individual devices or groups
- Monitor the status and location of your remote device via a web browser
- Active or deactivate cellular lines and monitor data to ensure you never incur overage charges

### SECURITY

- Certified SSAE-16 facilities
- Over 175 security controls in place to protect your data
- Enables compliance with security frameworks like PCI, HIPAA, NIST and more
- Earned SkyHigh's Cloud Trust Program highest ranking of Enterprise-Ready

## DIGI FOUNDATIONS™



### IT'S TIME TO CONNECT WITH CONFIDENCE

The convenient, comprehensive and secure way to integrate IoT communications hardware, device management software, global support and lifetime warranty protection into a connectivity solution to simplify your IoT network growth.

- [Digi Remote Manager®](#) (DRM) gives you a single point of contact, command and control with sophisticated remote device monitoring and management tools.
- [Digi Expert Support](#) is available around the clock, seven days a week, around the world with experts ready to provide technical support by phone, email or online.
- [Digi Limited Lifetime Warranty](#) lowers the total cost of ownership with hardware protection and equipment upgrades to expand your network as needs evolve.

Digi Foundations, with DRM, simplifies network and device management – for hundreds or hundreds-of-thousands of Digi or third-party devices – with options to upgrade as technology evolves. Isn't it time you got better connected?

For more information visit: [digi.com/foundations](http://digi.com/foundations)

PART NUMBERS	DESCRIPTION
XKA2C-Z7T-U	Digi XBee ZigBee Cloud Kit
XKA2C-Z7T-W	Digi XBee ZigBee Cloud Kit (International)
X2E-Z3C-E1-A	Digi XBee Gateway - ZigBee to Ethernet
X2E-Z3C-E1-W	Digi XBee Gateway - ZigBee to Ethernet (International)
X2E-Z3C-W1-A	Digi XBee Gateway - ZigBee to Ethernet/Wi-Fi
X2E-Z3C-W1-W	Digi XBee Gateway - ZigBee to Ethernet/Wi-Fi (International)
X2E-Z3C-H2-W	Digi XBee Gateway - ZigBee to GSM 3G (International)
X2E-Z4C-D2-A	Digi XBee Gateway - ZigBee to Verizon 3G
X2E-Z4C-H1-A	Digi XBee Gateway - ZigBee to GSM 3G (AT&T)

DIGI FOUNDATIONS™	AVAILABLE FOR DIGI XBEE GATEWAY FAMILY
DGF-BDL-STAN-1YR	Digi Foundations add-on, 1 year, includes Expert Support, Digi Remote Manager, and Limited Lifetime Warranty
DGF-BDL-STAN-3YR	Digi Foundations add-on, 3 years, includes Expert Support, Digi Remote Manager, and Limited Lifetime Warranty
DGF-BDL-STAN-5YR	Digi Foundations add-on, 5 years, includes Expert Support, Digi Remote Manager, and Limited Lifetime Warranty

FOR MORE INFORMATION  
PLEASE VISIT [DIGI.COM](http://DIGI.COM)

**DIGI SERVICE AND SUPPORT** / You can purchase with confidence knowing that Digi is always available to serve you with expert technical support and our industry leading warranty. For detailed information visit [www.digi.com/support](http://www.digi.com/support).

© 1996-2019 Digi International Inc. All rights reserved.  
All trademarks are the property of their respective owners.

91002791  
C1/1019

**DIGI INTERNATIONAL WORLDWIDE HQ**  
877-912-3444 / 952-912-3444 / [www.digi.com](http://www.digi.com)

**DIGI INTERNATIONAL GERMANY**  
+49-89-540-428-0

**DIGI INTERNATIONAL JAPAN**  
+81-3-5428-0261 / [www.digi-intl.co.jp](http://www.digi-intl.co.jp)

**DIGI INTERNATIONAL SINGAPORE**  
+65-6213-5380

**DIGI INTERNATIONAL CHINA**  
+86-21-50492199 / [www.digi.com.cn](http://www.digi.com.cn)



## X-ON Electronics

Largest Supplier of Electrical and Electronic Components

*Click to view similar products for [Gateways category](#):*

*Click to view products by [Digi International manufacturer](#):*

Other Similar products are found below :

[BB-SG30000324-51](#) [MTCDT-LEU1-247A-915-EU-GB-AU](#) [MTCDTIP-LEU1-275L-868](#) [MTCDT-LEU1-246A-868-EU-GB](#) [WOP-2000G-N2AE](#) [ESRP-PCS-ECU1251](#) [BB-SG30300525-42](#) [BB-SG30500520-42](#) [1120730001](#) [SGX5150102US](#) [XPC250300S-02](#) [RG191](#) [UPS-EDGE-X70864-U01](#) [UPS-EDIOT-X70864-UW01](#) [ADAM-4572-CE](#) [ADAM-6717-A](#) [ECU-1152-R11ABE](#) [EKI-1224-CE](#) [EKI-1224CI-CE](#) [ESRP-PCS-WISE710](#) [ICR-3201](#) [ICR-3201-W](#) [UNO-220-P4N1AE](#) [UNO-2271G-W1032GE](#) [WISE-3310-D100L1E](#) [WISE-3610ILS-51A1N](#) [WISE-6610-E100-A](#) [WISE-6610-N100-A](#) [AKX00016](#) [MESR901](#) [MESR902T](#) [X2-Z11-EM-W](#) [X2-HMU-EM-B](#) [X4-Z1U-B101-A](#) [AGS102-I50-6COM](#) [SGX5150020US](#) [SGX51501M2ES](#) [SGX51502N5ES](#) [XPC240200B-02](#) [XPC240400B-02](#) [XPC240100S-02](#) [XPC240200S-02](#) [XPC240300S-02](#) [XPC240400S-02](#) [XPE200100S](#) [WSDA-2000](#) [WSDA-200-USB](#) [1120780001](#) [1120780002](#) [MTCDT-246A-868-EU-GB](#)