

# XBIB-U-DEV

## Reference Guide

**20 Pin Header**  
Maps to standard through hole XBEE pins

**Through Hole XBee Sockets**

**Indicator LEDs**  
DS5: ON/ SLEEP  
DS2: DIO12  
DS3: DIO11  
DS4: DIO4

**Programming Header**  
Header used to program XBee Programmable modules

**Self Power Module**  
Advanced users only – will void warranty. R31 must be depopulated to power module using V+ and GND from J2 and J5. Sense lines can be connected to S+ and S- for sensing power supplies. **CAUTION:** Voltage not regulated. Applying incorrect voltage can cause fire and serious injury. See Note 1.

**SPI**  
Only used for SMT modules

**SPI Power**  
Connect to power board from 3.3V

**Current Testing**  
Depopulating R31 allows a current probe to be inserted across P6 terminals. The current though P6/R31 powers the module only. Other supporting circuitry is powered by a different trace.

**Reset button**

**Loopback Jumper**  
Populating P8 with a loopback jumper causes transmissions both from the module and from the USB to loopback.

**User Buttons**  
Connected to DIO lines for user implementation

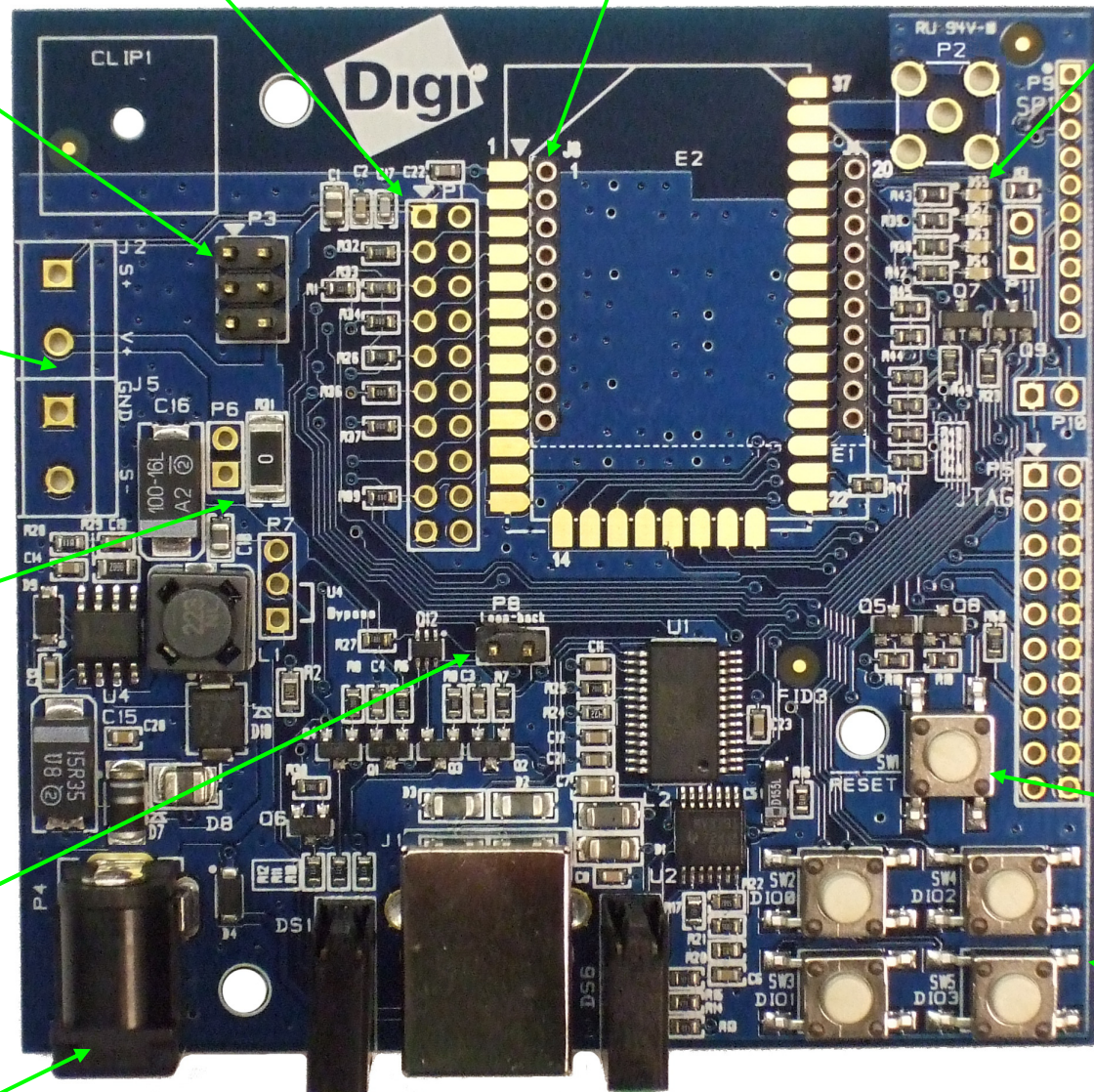
**DC barrel plug: 6-20V**  
Module can be powered by the USB or DC supply. When plugged in simultaneously the DC supply powers the board.

**LED Indicator**  
Yellow: UART Tx, RF Rx  
Green: UART Rx, RF Tx  
Red: Associate

**USB**

**RSSI Indicator**

**NOTE 1:** Powering board with J2 and J5 without R31 removed can cause shorts if USB or barrel plug power is connected. Applying too high of a voltage will destroy electronic circuitry in the module and other board components and/or cause injury.



## X-ON Electronics

Largest Supplier of Electrical and Electronic Components

*Click to view similar products for [Interface Development Tools](#) category:*

*Click to view products by [Digi International](#) manufacturer:*

Other Similar products are found below :

[ADP5585CP-EVALZ](#) [CHA2066-99F](#) [AS8650-DB](#) [416100120-3](#) [XR18910ILEVB](#) [XR21B1421IL28-0A-EVB](#) [EVAL-ADM2491EEBZ](#)  
[MAXREFDES23DB#](#) [MAX13235EEVKIT](#) [DFR0257](#) [XR22404CG28EVB](#) [ZLR964122L](#) [ZLR88822L](#) [DC327A](#) [PIM511](#) [PIM536](#) [PIM517](#)  
[DEV-17512](#) [STR-FUSB3307MPX-PPS-GEVK](#) [ZSSC3240KIT](#) [P0551](#) [MAX9121EVKIT](#) [PIM532](#) [ZSC31010KITV2P1](#) [MIKROE-2335](#)  
[XR20M1172G28-0B-EB](#) [1764](#) [1833](#) [1862](#) [EVB-USB82514](#) [ATA6628-EK](#) [EVAL-CN0313-SDPZ](#) [2264](#) [MCP23X17EV](#) [PS081-EVA-HR](#)  
[MODULE](#) [237](#) [SMA2RJ45EVK/NOPB](#) [FR12-0002](#) [MAFR-000455-001](#) [BOB-13263](#) [CPC5622-EVAL-600R](#) [SKYFR-000743](#) [SKYFR-](#)  
[000827](#) [SKYFR-000982](#) [MIKROE-2750](#) [292](#) [DFR0065](#) [DFR0077](#) [TEL0010](#) [TEL0038](#)