



ERRATA SHEET # 150320

Date:

March 20, 2015

Product:

XBee Development Kits

Summary:

This errata sheet documents a resolution for a known issue with the USB port use on XBee® development board kits shipped prior to 2/23/15.

Issue:

Some Digi XBee® development board kits were confirmed to exhibit a failure when powered through the USB port. The cause was found to be a variation on the voltage regulator that caused some USB circuits to not function properly. Specifically, the boards cause the FTDI chip to not enumerate when the power supply doesn't come up properly to 3.3v.

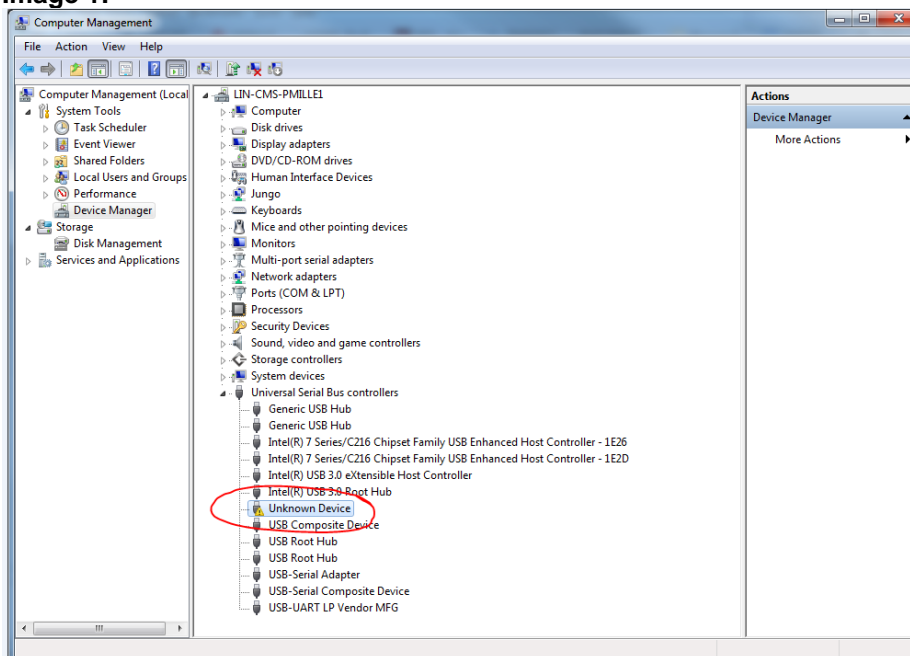
Determining the failure:

If the board is able to consistently connect through the USB, it is considered ok and not prone to this issue. Because the issue is intermittent, we suggest the user verifies port connectivity three times in succession.

To verify if your board may be faulty, perform the following test:

- 1) Plug in the USB port to your PC
- 2) Open up "Device Manager" from your windows PC to make sure all USB units do not have errors. A faulty connection will show up as a USB icon with an exclamation mark. Below in image 1 is a screen shot highlighting a faulty USB connection

Image 1:



Resolution:

To resolve the issue, the barrel jack must be supplied with between 6v to 20v of power, prior to connecting the USB port. If the barrel jack is supplied with between 6v to 20v prior to the USB connection, the board will always function properly. However, the barrel jack must be connected first, followed by the USB to guarantee correct operation.

Most of the development kits include one or more 12V power supplies to power one or more boards. If your kit did not have a power supply and you need one, or would like to return your development board for a new fully functional unit, please see the “customer resolution” information and tables below.

Customer Resolution:

If you need a replacement power supply or wish to exchange any affected product, you may request an RMA from the Customer Service team. Please send your request to DigiRMAs@digi.com or contact us by phone at 800-344-4273 Option 4. Please reference the Errata Sheet # along with Part Number and Quantity of the affected part(s).

If you have technical related concerns or questions about this notice please contact our technical support department via telephone at 801-765-9885 or submit a request online at <http://www.digi.com/support/eservice/>. Please reference the Errata Sheet # along with Part Number and Quantity of the affected part(s).

Product Management
Digi International
11001 Bren Road East
Minnetonka, MN 55343

Table 1: Affected Board Part Numbers with old / new revisions and descriptions

| Part Number | Revision | Description |
|-------------|----------|---------------------------------------|
| XBIB-U-DEV | D | XBee, Dev Interface Board USB |
| XBIB-U-SS | D | XBee USB Interface Board - SMT Socket |

Image 2: example board (P/N: XBIB-U-DEV)

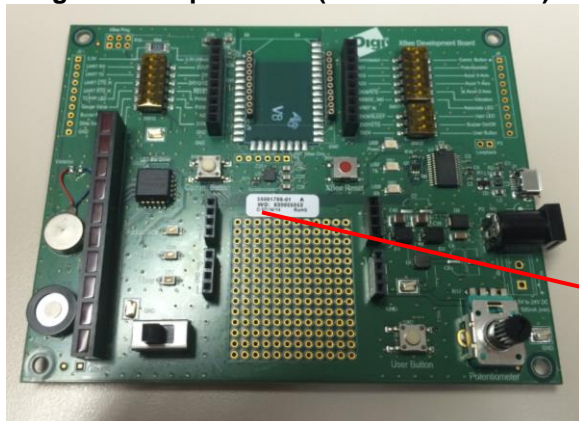


Image 3: Notation of Revision Level on Label



Table 2: Affected Kits without power supplies to resolve, and replacement items if needed

| ITEM | DESCRIPTION | BOARD / REPLACEMENT BOARD | POWER SUPPLY (INCLUDED) | Replacement Power Supply |
|-----------------|-----------------------------------|--|---|---------------------------------------|
| XB24-DKS | XBee Starter Development Kit | XBIB-U-DEV (QTY 2) | 24000056 (PS,12VDC 100-240V 18W 1.5A) (QTY 1) 18000291 (CONN,AC Plug Kit EU,UK,AUST) (QTY 1) | 76000738 (PS,12VDC 100-240V 18W 1.5A) |
| XB24-DKS-INT | XBee Starter Development Kit | XBIB-U-DEV (QTY 2) | No power supply on BOM | |
| XB24-DKSJ | XB 2.4,S1 Starter Kit,Jpn | XBIB-U-DEV (QTY 2) | JP5P2-9V11-6F (9V 1.1A 10 Watt Power Supply) (QTY 1) | |
| XB24-DMDK | XBee DigiMesh 2.4 Dev Kit | XBIB-U-DEV (QTY 4) | 24000056 (PS,12VDC 100-240V 18W 1.5A) (QTY 2) 18000291 (CONN,AC Plug Kit EU,UK,AUST) (QTY 2) | |
| XB24-DMDK-WJ | XBee DigiMesh 2.4 Dev Kit Jpn | XBIB-U-DEV (QTY 4) | JP5P2-9V11-6F (9V 1.1A 10 Watt Power Supply) (QTY 2) | |
| XB24-PDK | XBee Professional Developer's | XBIB-U-DEV (QTY 5) | 24000056 (PS,12VDC 100-240V 18W 1.5A) (QTY 3) 18000291 (CONN,AC Plug Kit EU,UK,AUST) (QTY 3) | |
| XB24-PDK-INT | XBee Professional Developer's | XBIB-U-DEV (QTY 5) | No power supply on BOM | |
| XB24-PDKJ | XBee 802.15.4 Dev Kit Jpn | XBIB-U-DEV (QTY 5) | JP5P2-9V11-6F (9V 1.1A 10 Watt Power Supply) (QTY 3) | |
| XBP08-DK | XBee-PRO 868 Development Kit | XBIB-U-DEV (QTY 2) | 24000056 (PS,12VDC 100-240V 18W 1.5A) (QTY 1) 18000291 (CONN,AC Plug Kit EU,UK,AUST) (QTY 1) | |
| XBP09-DMDK | XBee-PRO DigiMesh 900 Dev Kit | XBIB-U-DEV (QTY 4) | 24000056 (PS,12VDC 100-240V 18W 1.5A) (QTY 2) 18000291 (CONN,AC Plug Kit EU,UK,AUST) (QTY 2) | |
| XBP24-DKS | XBee-PRO Starter Development Kit | XBIB-U-DEV (QTY 2) | 24000056 (PS,12VDC 100-240V 18W 1.5A) (QTY 1) 18000291 (CONN,AC Plug Kit EU,UK,AUST) (QTY 1) | |
| XBP24-DKS-INT | XBee-PRO Starter Development Kit | XBIB-U-DEV (QTY 2) | No power supply on BOM | |
| XBP24-DKSJ | XBeePRO Starter Dev Kit Japan | XBIB-U-DEV (QTY 2) | JP5P2-9V11-6F (9V 1.1A 10 Watt Power Supply) (QTY 1) | |
| XBP24BZ7B-DK | XBP,ZB Programmable Dev Kit | XBIB-U-DEV (QTY 2) | No power supply on BOM | |
| XBP24BZ7B-DK-W | XBP,ZB Int Programmable Dev Kit | XBIB-U-DEV (QTY 2) | No power supply on BOM | |
| XBP24BZ7B-DK-WJ | XBP,ZB Jpn Programmable Dev Kit | XBIB-U-DEV (QTY 2) | No power supply on BOM | |
| XK-Z11-M | ZigBee, RF Module Dev Kit | XBIB-U-DEV (QTY 4) | 24000056 (PS,12VDC 100-240V 18W 1.5A)(QTY2) | |
| XK-Z11-M-W | ZigBee, RF Module Dev Kit-Int | XBIB-U-DEV (QTY 4) | 24000056 (PS,12VDC 100-240V 18W 1.5A) (QTY 2) 18000291 (CONN,AC Plug Kit EU,UK,AUST) (QTY 2) | |
| XK-Z11-M-WA | ZigBee, RF Module Dev Kit - Austr | XBIB-U-DEV (QTY 4) | 24000056 (PS,12VDC 100-240V 18W 1.5A) (QTY 2) 18000291 (CONN,AC Plug Kit EU,UK,AUST) (QTY 2) | |
| XK-Z11-T | iDigi Tank ZB US Kit | XBIB-U-DEV (QTY 1) | 24000077 (PS,12V OUT 100/240 LOCK, ISOL RTN)(QTY 1) | |
| XK-Z11-T-W | iDigi Tank ZB Kit Int | XBIB-U-DEV (QTY 1) | 24000077 (PS,12V OUT 100/240 LOCK, ISOL RTN)(QTY 1) | |
| XK2B-WFT-0 | XBee, S6B Wi-Fi Development Kit | XBIB-U-DEV (QTY 1); XBIB-U-SS (QTY 1) | No power supply on BOM | |
| XK9-XCT-0 | XBee-PRO, XSC S3B Dev Kit | XBIB-U-DEV (QTY 2) | JP5P2-9V11-6F (9V 1.1A 10 Watt Power Supply)(QTY 1) | |
| XK9-XCT-2 | XBee-PRO, XSC S3B 920 MHz 9.6 | XBIB-U-DEV (QTY 2) | 24000056 (PS,12VDC 100-240V 18W 1.5A) (QTY 1) 18000291 (CONN,AC Plug Kit EU,UK,AUST) (QTY 1) | |
| XKP9-DM-0 | XBee-PRO 900HP S3B Dev Kit (Do | XBIB-U-DEV (QTY 3) | JP5P2-9V11-6F (9V 1.1A 10 Watt Power Supply)(QTY 2) | |
| XKP9-DM-1 | XBee-PRO 900HP S3B 920MHz (B | XBIB-U-DEV (QTY 3) | 24000056 (PS,12VDC 100-240V 18W 1.5A) (QTY 2) 18000291 (CONN,AC Plug Kit EU,UK,AUST) (QTY 2) | |
| XKP9-DM-2 | XBee-PRO 900HP S3B 920MHz (A | XBIB-U-DEV (QTY 3) | 24000056 (PS,12VDC 100-240V 18W 1.5A) (QTY 2) 18000291 (CONN,AC Plug Kit EU,UK,AUST) (QTY 2) | |
| XKP9-DM-4 | XBee-PRO 900HP S3B 920MHz (S | XBIB-U-DEV (QTY 3) | 24000056 (PS,12VDC 100-240V 18W 1.5A) (QTY 2) 18000291 (CONN,AC Plug Kit EU,UK,AUST) (QTY 2) | |
| XKP9-DMB0 | XBP, PROG 900HP S3B DEV KIT | XBIB-U-DEV (QTY 3) | JP5P2-9V11-6F (9V 1.1A 10 Watt Power Supply)(QTY 2) | |
| XK-Z11-S | ZigBee SMT RF Module Dev Kit | XBIB-U-SS (QTY 4) | 24000056 (PS,12VDC 100-240V 18W 1.5A)(QTY 2) | |
| XK-Z11-S-W | ZigBee SMT RF Module Dev Kit-Int | XBIB-U-SS (QTY 4) | 24000056 (PS,12VDC 100-240V 18W 1.5A) (QTY 2) 18000291 (CONN,AC Plug Kit EU,UK,AUST) (QTY 2) | |
| XK-Z11-S-WA | ZigBee SMT RF Module Dev Kit - A | XBIB-U-SS (QTY 4) | 24000056 (PS,12VDC 100-240V 18W 1.5A) (QTY 2) 18000291 (CONN,AC Plug Kit EU,UK,AUST) (QTY 2) | |
| XK2-Z7SBO | XBP, ZB SMT 32K Prog Dev Kit US | XBIB-U-SS (QTY 2) | No power supply on BOM | |
| XK2-Z7SBE0 | XBP, ZB SMT 32K Prog Dev Kit EM | XBIB-U-SS (QTY 2) | No power supply on BOM | |
| XK2-Z7SBJ0 | XBP, ZB SMT 32K Prog Dev Kit JPN | XBIB-U-SS (QTY 2) | No power supply on BOM | |
| XK2B-WFT-0 | XBee, S6B Wi-Fi Development Kit | XBIB-U-DEV (QTY 1); XBIB-U-SS (QTY 1) | No power supply on BOM | |
| XK8-DMS-0 | XBee, 865/868LP Dev Kit | XBIB-U-SS (QTY 3) | 24000056 (PS,12VDC 100-240V 18W 1.5A) (QTY 2) 18000291 (CONN,AC Plug Kit EU,UK,AUST) (QTY 2) | |
| XK8-DMSB0 | XBee, 865/868LP Programmable | XBIB-U-SS (QTY 3) | 24000056 (PS,12VDC 100-240V 18W 1.5A) (QTY 2) 18000291 (CONN,AC Plug Kit EU,UK,AUST) (QTY 2) | |

X-ON Electronics

Largest Supplier of Electrical and Electronic Components

Click to view similar products for [Zigbee Development Tools - 802.15.4 category](#):

Click to view products by [Digi International manufacturer](#):

Other Similar products are found below :

[EVAL_PAN4555ETU](#) [4467CPCE10D868](#) [STEVAL-IFS013V2](#) [DFR0015](#) [DFR0050](#) [WRL-14549](#) [BOB-13311](#) [ATRCB256RFR2-XPRO](#)
[ATREB212BSMA-EK](#) [ATREB231ED-EK](#) [ATREB233-XPRO](#) [ATZB-A-233-XPRO](#) [ATZB-X-212B-USB](#) [ATZB-X-233-XPRO](#) [76000956](#)
[XK-WDM](#) [IS.OMB-001](#) [DM182016-1](#) [MIKROE-4277](#) [MIKROE-1599](#) [MIKROE-290](#) [MIKROE-987](#) [FRDM-KW41Z](#) [113020004](#) [EM35X-](#)
[BBRD](#) [RBK-ZW500-E2](#) [RBK-ZW500-H2](#) [RBK-ZW500-U2](#) [RD-0039-0201](#) [RFX2411N-EVB](#) [WRL-11373](#) [WRL-11812](#) [WRL-12847](#)
[SKY66114-11-EK1](#) [SKY66403-11EK1](#) [SKY66112-11EK1](#) [XB24-DKS](#) [XB24-DKS-INT](#) [XB24-DKSJ](#) [XB24-DMDK](#) [XB24-DMDK-WJ](#)
[XB24-PDKJ](#) [XBEE-MP-MCRO](#) [XBEE-MP-SMT](#) [XBEE-MP-TH](#) [XBIB-CU-TH](#) [XBP09-DMDK](#) [XBP24-DKS](#) [XK8-DMSB0](#) [XKA2C-Z7T-](#)
[U](#)