



USB-TO-DIGI XBEE®
WIRELESS ADAPTER
FOR LAPTOPS AND PCS



DIGI XBEE 3 USB ADAPTER

The Digi XBee 3 USB Adapter provides local connectivity to wireless Digi XBee networks from a laptop or PC, enabling local commissioning of the network and its devices

The Digi XBee® 3 USB Adapter is an easy-to-use USB-to-Digi XBee Wireless Personal Area Network (WPAN) adapter, providing local connectivity to wireless networks. Simply plug the Digi XBee 3 USB Adapter into the USB port of a laptop or PC for instant access to a Digi XBee network and its devices. This compact, USB-powered wireless adapter enables local network configuration, diagnostics and device monitoring.

The Digi XBee 3 USB Adapter is part of Digi's XBee family of solutions, providing wireless communication between devices, including routers and gateways. The Digi XBee 3 USB Adapter uses Digi's XBee 3 module which lets you program the desired protocol using the Digi XCTU software platform. The adapter connects with DigiMesh, 802.15.4 and Zigbee network protocols.

Digi XBee 3 USB Adapter and Network Assistant

Digi Network Assistant is a Windows-based free software download that works in tandem with the Digi XBee 3 USB Adapter. Used together, these tools enable network technicians to perform a range of tasks on a local network, out in the field, whether or not network connectivity is available. These tasks may include administering on-site surveys and troubleshooting through the network mapping feature, reviewing the status of all nodes, and performing over-the-air firmware updates.

You can download and install the Digi XBee Network Assistant at www.digi.com/xbeetworkassistant.

BENEFITS

- Provides connectivity to local Digi XBee networks from a laptop/PC
- Enables fast local commissioning of devices on the local network
- Programmable module to communicate with any of Digi's supported wireless protocols
- USB powered
- LEDs for UART traffic and network association

RELATED PRODUCTS



Digi XBee 3
Zigbee 3



Digi XBee
Zigbee Gateway

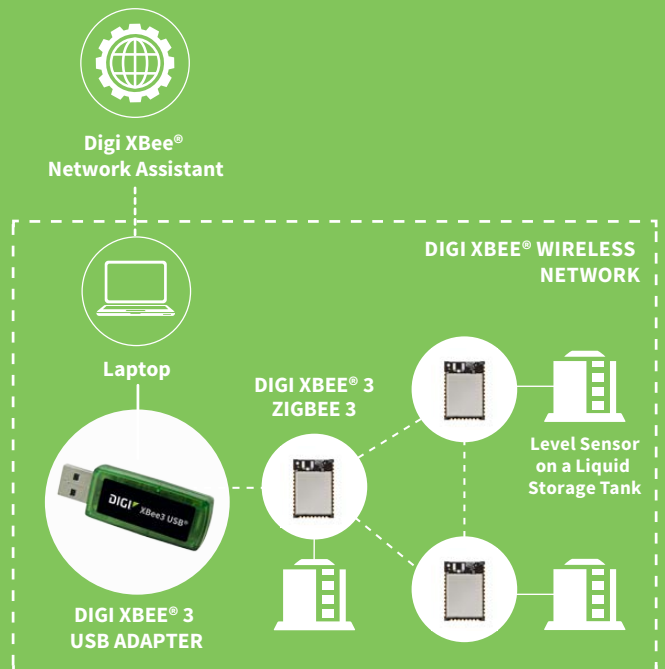


Digi Network
Assistant



Digi XCTU

APPLICATION EXAMPLE



SPECIFICATIONS

DIGI XBEE® 3 USB ADAPTER

PERFORMANCE

OUTDOOR/RF LINE-OF-SIGHT RANGE*	Up to 1968 ft (600 m)
TRANSMIT POWER OUTPUT (NOMINAL 25° C)	6.3 mW (8 dBm)
RF DATA RATE	250 Kbps
SERIAL INTERFACE DATA RATE (SOFTWARE SELECTABLE)	1200 bps - 921.6 Kbps
DIGI XBEE 3 RECEIVER SENSITIVITY	-103 dBm

POWER REQUIREMENTS

SUPPLY VOLTAGE	5V from PC USB port
TRANSMIT CURRENT	45 mA
RECEIVE CURRENT	26 mA
POWER-DOWN CURRENT	The Digi XBee 3 USB Adapter should not be put into sleep mode

GENERAL

FREQUENCY BAND	2.4 GHz ISM
DIMENSIONS (L X W X H)	2.29 in x 0.80 in x 0.44 in (5.83 cm x 2.03 cm x 1.12 cm)
OPERATING TEMPERATURE	-40° C to +85° C
CONNECTOR	USB Type A
ANTENNA OPTIONS	Internal only

NETWORKING & SECURITY

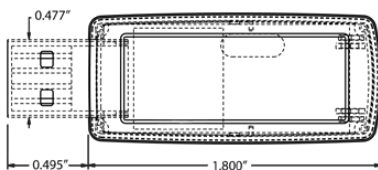
SUPPORTED NETWORK TOPOLOGIES	Zigbee Mesh, Point-to-Point, Point-to-Multipoint, Peer-to-Peer
NUMBER OF CHANNELS (SOFTWARE SELECTABLE)	16
ADDRESSING OPTIONS	PAN, Channel, Address

REGULATORY APPROVALS

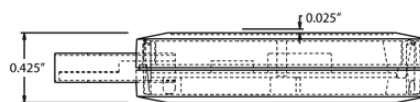
FCC PART 15.247 (USA)	Approved, contains: MCQ-XBEE3
IC (CANADA)	Approved, contains IC: 1846A-XBEE3
EUROPEAN COMPLIANCE	CE Marked

*Range figure estimates are based on free-air terrain with limited sources of interference. Actual range will vary based on transmitting power, orientation of transmitter and receiver, height of transmitting antenna, height of receiving antenna, weather conditions, interference sources in the area, and terrain between receiver and transmitter, including indoor and outdoor structures such as walls, trees, buildings, hills, and mountains.

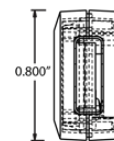
DIGI XBEE 3 USB ADAPTER TOP



DIGI XBEE 3 USB ADAPTER SIDE



DIGI XBEE 3 USB ADAPTER CONNECTOR



PART NUMBERS

DESCRIPTION

XU3-A11	Digi XBee 3 USB Adapter 802.15.4, US, Canada and EMEA
----------------	---

DIGI SERVICE AND SUPPORT / You can purchase with confidence knowing that Digi is always available to serve you with expert technical support and our industry leading warranty. For detailed information visit www.digi.com/support.

© 1996-2019 Digi International Inc. All rights reserved.
All trademarks are the property of their respective owners.

91004405
A3/618

DIGI INTERNATIONAL WORLDWIDE HQ
877-912-3444 / 952-912-3444 / www.digi.com

DIGI INTERNATIONAL GERMANY
+49-89-540-428-0

DIGI INTERNATIONAL JAPAN
+81-3-5428-0261 / www.digi-intl.co.jp

DIGI INTERNATIONAL SINGAPORE
+65-6213-5380

DIGI INTERNATIONAL CHINA
+86-21-50492199 / www.digi.com.cn



X-ON Electronics

Largest Supplier of Electrical and Electronic Components

Click to view similar products for [Zigbee Modules - 802.15.4 category:](#)

Click to view products by [Digi International manufacturer:](#)

Other Similar products are found below :

[XBP24-ASI-080](#) [ATZB-RF-212B-0-CNR](#) [34560-894](#) [32411](#) [32416](#) [32406](#) [ZTU\(ujzh\)](#) [BB-WCD1H2102H](#) [BB-WCD1H3001HP100](#) [BB-WSD2C31010](#) [BB-WSD2M31010](#) [BB-WSK-SLM-2](#) [BB-WSD2C21150](#) [BB-WSK-CBM-2](#) [20848674](#) [CC-MX-LB58-ZM](#) [BB-WSD2M3101P2K](#) [WSD2M06010](#) [BB-WCD1H2102H](#) [BB-WSD2C21150](#) [BB-WSD2M31010](#) [WSD2CTJ](#) [WSD2MD2](#) [CC-MX-LB69-ZK](#) [WPMM1A01A](#) [WPMM1A02A](#) [WPMM1A05A](#) [ATZB-RF-233-1-CR](#) [ATSAMR21G18-MR210UA](#) [ATSAMR21G18-MR210UAT](#) [AX-SF10-ANT21-868-B1](#) [AX-SF10-MINI21-868-B1](#) [24572054](#) [114990002](#) [EM357-MOD-ANT-T](#) [ETRX3587HR-LRS](#) [WPMM1A00A](#) [ATZB-RF-212B-0-CN](#) [WMPR1A00B1A2](#) [WMPR1A02B1A2](#) [WMPR1A00B1A1](#) [WMPR1A02B1A1](#) [WPMM1A04A](#) [WPMM1A01B](#) [WPMM1A02AS01](#) [WMPR1A02A1A1](#) [CGW-Z-0010-01-00](#) [XB24CAPIS-001](#) [XB24CAPIT-001](#) [XB24CAUIT-001](#)