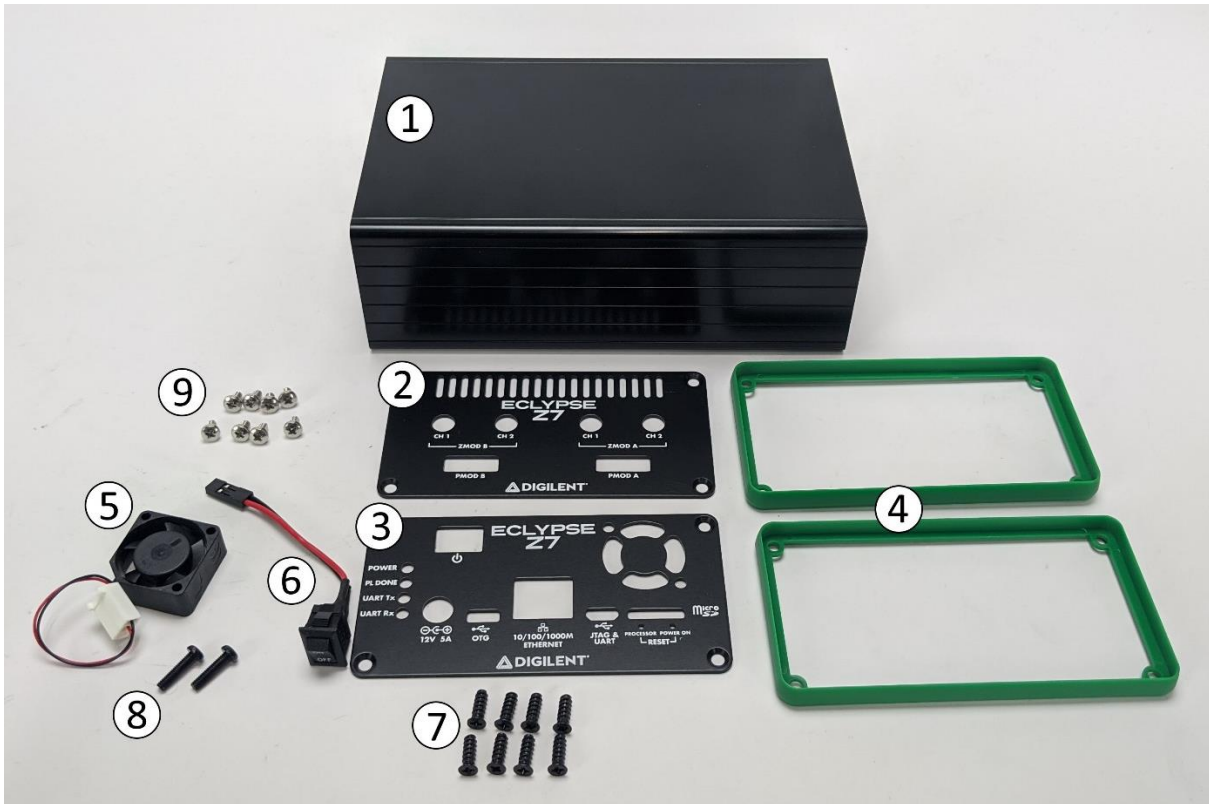


Eclipse Z7 Enclosure Assembly Guide

Revised 3/19/2020

What's in the box?



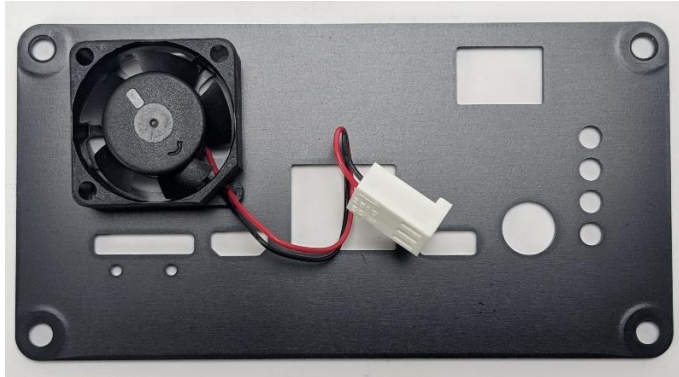
- | | |
|----------------------------|---|
| ① Aluminum Enclosure | ⑥ Power switch |
| ② Zmod faceplate | ⑦ 8× Enclosure screws (Thread cutting, #6x3/8") |
| ③ Main interface faceplate | ⑧ 2× Fan screws (Thread forming, M3x12mm) |
| ④ End caps | ⑨ 8× Zmod screws (M3x5mm) |
| ⑤ Fan | |

1 Materials Needed

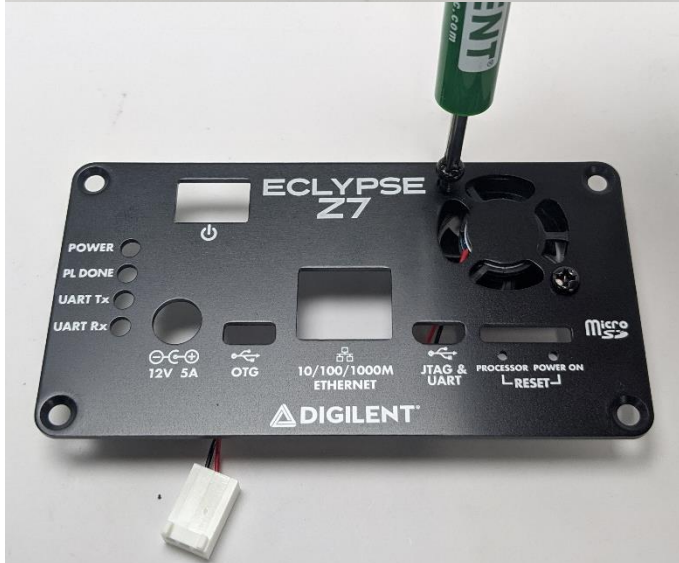
- 1× Phillips Screwdriver
- 1× 8mm wrench or pliers

2 Assembly

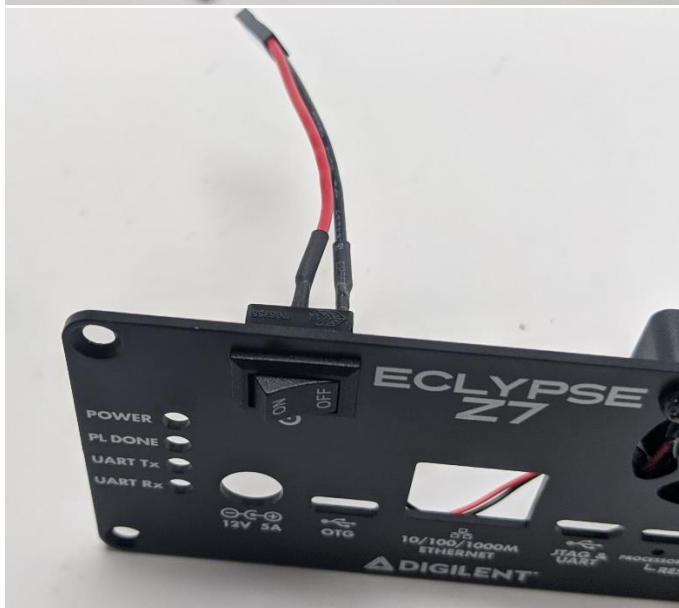
Align fan on the main interface faceplate as in the picture. The label will face outwards.



Secure the fan to the faceplate using the 2 fan screws.



Insert the power switch into the power switch hole and press into place.

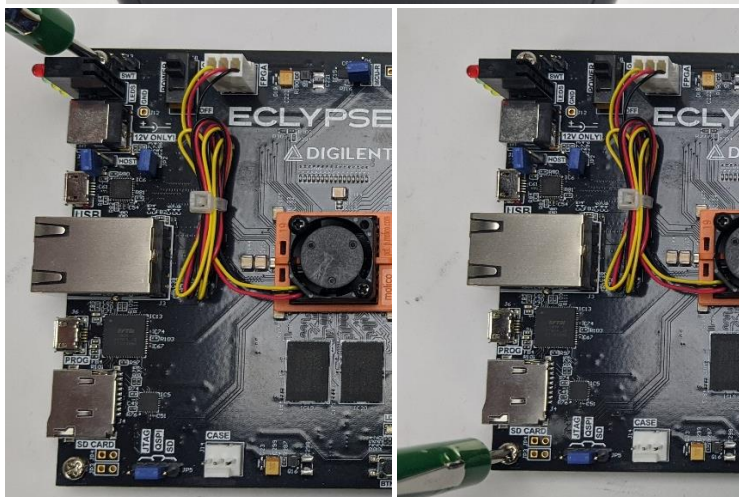


Place green end cap on one end of the aluminum enclosure. Place Zmod faceplate on the end cap and screw in using 4 enclosure screws.

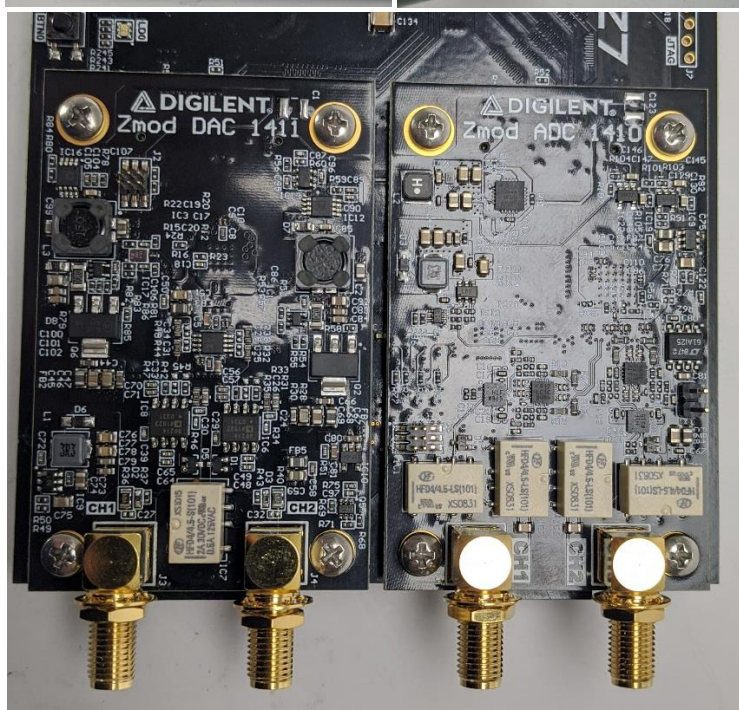
The screws will form threads in the aluminum enclosure the first time they are screwed in.



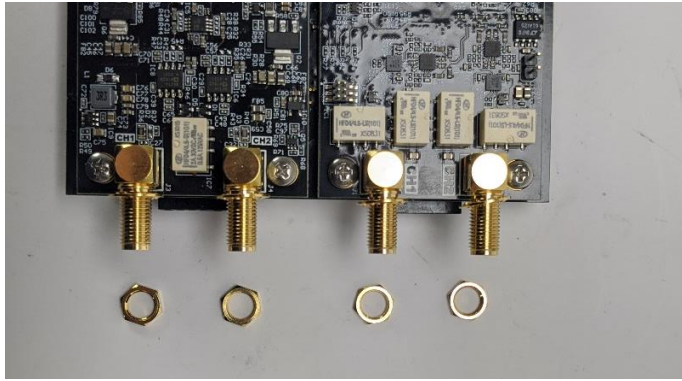
Remove the metal standoffs from the left side of the Eclipse Z7.



Screw the Zmods in using the 8 Zmod screws.



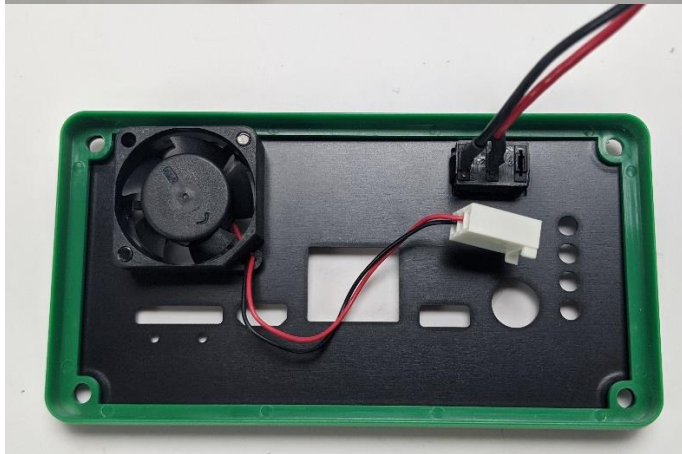
Remove the nuts from the Zmod SMA connectors using a wrench or pliers. Leave the washers on the connectors.



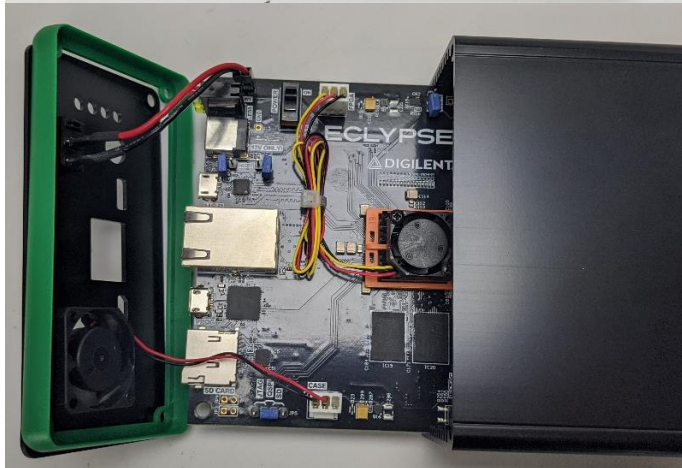
Insert the Eclipse Z7 into the 3rd rack of the open end of the aluminum enclosure, Zmods first.



Place the other end cap over the main interface faceplate.



Plug the power switch wire into the SWT (J13) jumper. Plug the fan into the CASE (J14) jumper.



Fully insert the Eclipse Z7 into the enclosure. Screw in the main interface faceplate using the last 4 enclosure screws.



Screw the nuts back onto the SMA connectors.



Job done!



X-ON Electronics

Largest Supplier of Electrical and Electronic Components

Click to view similar products for [Modules Accessories](#) category:

Click to view products by [Digilent](#) manufacturer:

Other Similar products are found below :

[7010-0001](#) [AX98219](#) [A1UL8RISER](#) [F1UJPMICRISER](#) [FHW1U16RISER](#) [20-101-0440](#) [2828736-1](#) [MBCDROM](#) [AX61221TM](#) [VM-105](#)
[EA CARREDIPTFT02](#) [RK-210E-B](#) [E226171106](#) [88606200030E](#) [SI-HDMI-EDID-EM](#) [MIC-75M13-00A1E](#) [FPM-1000T-SMKE](#) [AMK-](#)
[R004E](#) [96FMCF-ST2ADAPTER1](#) [AHWKPTP12GBGB](#) [AXXSTCPUCAR](#) [FPK-07-R10](#) [Mini Din 6P to 6P HARNESS](#) [FPF1320 POWER](#)
[MULTIPLEXER CARRIER](#) [881261510A0E](#) [AXXP3SWX08080](#) [conga-B7XD/CSP-Cu-B](#) [881281021A0E](#) [HFT for mounting KIT](#)
[FN928X_FN929X](#) [BB-MH112-1A](#) [15100600](#) [9-5000-1116](#) [BKCMCR1ABB](#) [70763](#) [98R3612003E](#) [881261910A0E](#) [106897](#) [48222R](#)
[BREAK OUT BOARD 20](#) [4D ARDUINO ADAPTOR SHIELD II](#) [20926110901](#) [PYCASE GREEN](#) [PYCASE BLUE](#) [FP15072_ZORYA-SC-](#)
[HEKLA](#) [20952000004](#) [20953000007](#) [DP-DVI-R10](#) [575-BBIS](#) [RACK-220GW/A130B](#) [492-BBKM](#)