

## chipKIT™ Network Shield™ Reference Manual

Revised February 26, 2016

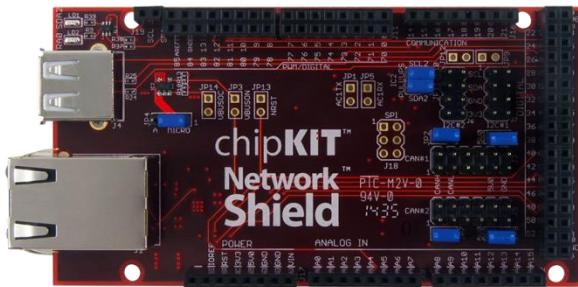
This manual applies to the chipKIT Network Shield rev. E

---

### Overview

The chipKIT Network Shield is an input/output expansion board designed for use with the chipKIT Max32™ microcontroller board. It has circuitry and connectors that enable you to exploit the advanced communications features of the PIC32MX795F512L microcontroller on the Max32.

The Network Shield has a 10/100 Mbps Ethernet PHY to enable connection to an Ethernet network. It provides the connectors and load switch to use the USB 2.0 On-The-Go (OTG) controller to implement a USB device, USB host, or OTG operation. It also has two CAN transceivers and connectors to allow connection to two independent CAN networks. Connectors are provided to enable connection to two of the I<sup>2</sup>C busses supported by the Max32.



*The chipKIT Network Shield board.*

Features include:

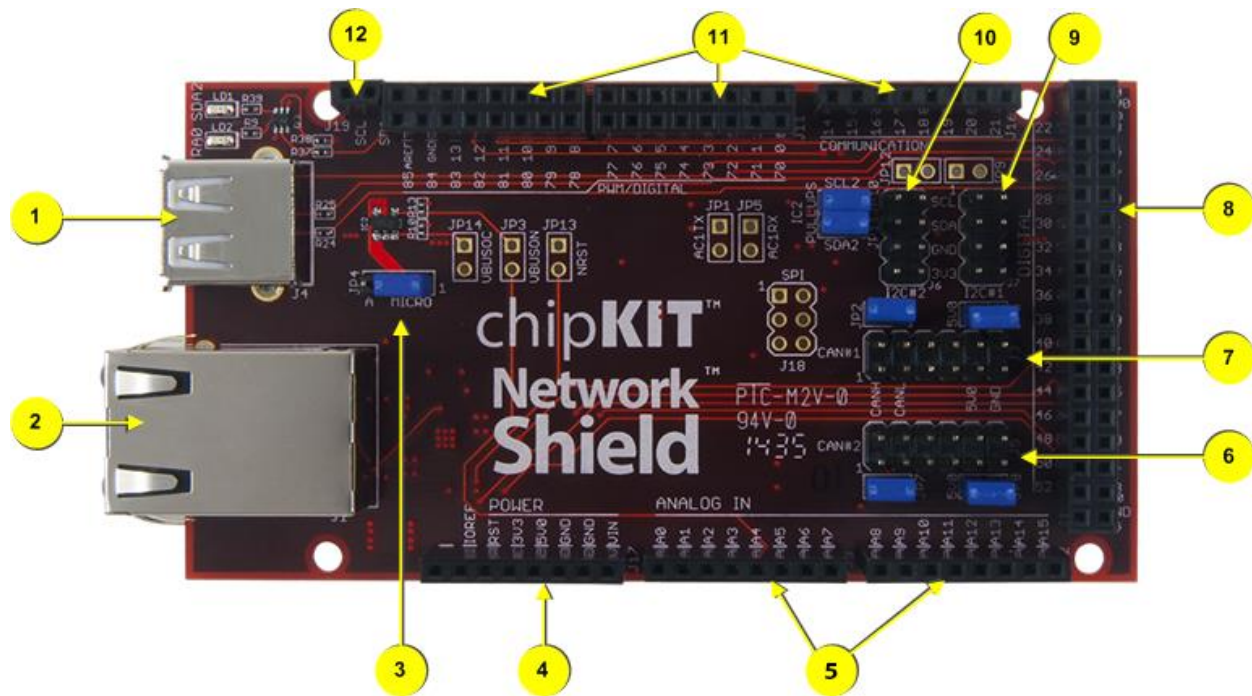
- An SMSC LAN8720 10/100 Ethernet PHY
- An RJ45 connector with integral magnetics
- A USB device and host connectors
- Two MCP2551 CAN transceivers
- Two 12-pin header connectors for CAN
- Two I<sup>2</sup>C daisy chain connectors
- A 256Kbit I<sup>2</sup>C EEPROM
- A 32.768 kHz oscillator

In addition to the communications features, the Network Shield also has a 256Kbit I<sup>2</sup>C EEPROM for non-volatile data storage and a 32.768 kHz oscillator for using the real-time clock/calendar (RTCC) peripheral in the PIC32 microcontroller.

The Network Shield has the same form factor as the Max32 board.

# 1 chipKIT Network Shield Hardware Overview

The Network Shield has the following hardware features:



## 1. USB Connectors

The connector on top of the board is a standard USB A-type receptacle. This is used when the Max32/Network Shield combination is used as a USB host. Immediately below this connector is a USB Micro-AB connector. This connector is used when the Max32/Network Shield is used as a USB device or when using it as a USB OTG device.

## 2. Ethernet Connector with Integral Magnetics

This connector is used to connect the Max32/Network Shield to an Ethernet network.

## 3. JP4: USB Host Connector Selection

When the Max32/Network Shield is used as a USB host, this jumper is used to select which USB connector is being used.

## 4. J17: Power Pass-Through Connector

This connector passes the power connector from the Max32 through the Network Shield and powers the Network Shield from the Max32.

## 5. J9 & J12: Analog Signal Pass-Through Connectors

These connectors pass the analog input pins on the Max32 through the Network Shield.

## 6. CAN2 Connector

This connector provides access to the signals for CAN2.

## 7. CAN1 Connector

This connector provides access to the signals for CAN1.

## 8. Digital Signal Connector

This connector provides most of the signals used by the Ethernet and USB interfaces from the Max32 board to the Network Shield. The remaining signals are passed through the Network Shield.

## 9. J7: I<sup>2</sup>C #1 Daisy Chain Connector

This is a 2x4 pin header connector that provides access to the I<sup>2</sup>C signals SDA and SCL as well as power from the 3.3V power bus and ground. This can be used to extend the I<sup>2</sup>C bus off the board and to power an external I<sup>2</sup>C device. Digiilent has cables and a selection of I<sup>2</sup>C peripheral modules that can be accessed using this connector.

## 10. J6: I<sup>2</sup>C #2 Daisy Chain Connector

This is a 2x4 pin header connector that provides access to the I<sup>2</sup>C signals SDA and SCL as well as power from the 3.3V power bus and ground. This can be used to extend the I<sup>2</sup>C bus off the board and to power an external I<sup>2</sup>C device. The jumpers for disabling the on-board pull-ups are adjacent to this connector.

## 11. Digital Signal Connectors

Some of the signals used by the Network Shield are provided on these connectors. The rest of the signals are passed through the Network Shield.

## 12. J19: I<sup>2</sup>C

Dedicated I<sup>2</sup>C signals. These signals are connected directly to I<sup>2</sup>C1 on the microcontroller and are shared with pins 20 and 21 on connector J4.

# 2 chipKIT Network Shield Hardware Description

The following describes the hardware on the Network Shield and how to use it. Appendices at the end show pin-out and connection tables.

The Network Shield is designed to be used with the chipKIT Max32 board. When used together, the two boards have the necessary supporting hardware and connectors to use all the advanced communications and networking features of the PIC32MX795F512L microcontroller on the Max32.

## 2.1 Ethernet Interface

The Network Shield can interface with 10Mbps or 100Mbps Ethernet networks. The PIC32MX795 microcontroller on the chipKIT Max32 board contains a 10/100 Ethernet Medium Access Controller (MAC). The Network Shield provides an SMSC LAN8720 Ethernet Physical Layer Transceiver (PHY). Together, the MAC and PHY provide a complete 10/100 Ethernet interface.

The RJ45 connector J1 provides the physical connection to an Ethernet network using a standard Ethernet cable.

When the Ethernet controller is enabled in the PIC32 microcontroller, it takes over the use of a number of the microcontroller pins. All of the signals from these pins are taken from connector J10 on the Network Shield (connector J8 on the Max32). Three of these signals are also shared with connector J7 on the Max32 and are analog pins A11, A12, and A13. When the Ethernet interface on the Network Shield is being used, these pins are

not available for other uses, and nothing should be connected to them to avoid interference with the operation of the Ethernet interface.

All devices on an Ethernet network must have a unique address. This address is used to direct packets on the network to a specific device and to identify the device that originated a packet. An Ethernet MAC uses a 48-bit address value, commonly called the 'MAC Address'. These address values are globally unique to ensure that no two devices on a network can have conflicting addresses. MAC addresses are assigned by the IEEE. The address to use with the Network Shield is printed on a sticker attached to the bottom of the board. The address is a twelve-digit hexadecimal number of the form: 00183Exxxxxx, where xxxxxx represents six hexadecimal digits. This value is used to initialize the Ethernet Controller MAC Station Address registers in the Ethernet controller of the PIC32MX795 microcontroller.

In order to connect to and use an Ethernet network, the PIC32 microcontroller must be running network protocol stack firmware. Normally, the TCP/IP (Transmission Control Protocol/Internet Protocol) network protocol is used and TCP/IP Stack software is used. The Ethernet library provided for use with the Network Shield has the necessary stack support for using the chipKIT Max32/Network Shield in the MPIDE programming environment.

If the board is being used outside the MPIDE programming environment, the Microchip Applications Library, available for download format [www.microchip.com](http://www.microchip.com), provides full protocol stack support compatible with the PIC32MX795 MAC and the LAN8720 PHY. Microchip also provides many example programs demonstrating the use of their network protocol stack for various applications.

When not using either the chipKIT Ethernet library or the Microchip network protocol stack, refer to the manufacturer documentation for the PIC32MX795 and LAN8720, as well as network protocol documentation, for information on using the Ethernet interface.

The PIC32MX795 microcontroller has two alternate sets of pins that can be used to connect the MAC to the external PHY. It also provides two alternate standard MAC/PHY interface signaling conventions. The chipKIT Max32/Network Shield is designed to use the standard (not alternate) pins, and to use the RMII (not MII) interface signaling convention. These options are selected using the configuration variables in the PIC32 microcontroller and are specified using the `#pragma config` statement. To enable the Ethernet controller in the correct configuration, the following statements must appear in the main program module:

```
#pragma config FETHIO=ON  
  
#pragma config FMIIEN=OFF
```

The boot loader in the chipKIT Max32 board sets this configuration by default. When using the Network Shield within the MPIDE environment no additional work is necessary. When using it outside the MPIDE environment, these configuration settings must be made.

The LAN8720 PHY has a reset signal, labeled NRST in the schematic, which is used to reset the PHY. This signal is connected to the INT2/RE9 pin on the PIC32 microcontroller. This pin is chipKIT digital pin 7 on the Max32 board. The NRST signal is active low. Configure the microcontroller pin as an output and drive it low to reset the PHY, or drive it high to allow the PHY to come out of reset and begin operation. The NRST signal is pulled low on the Network Shield, so that the PHY is held in reset by default. To allow the PHY to operate, this pin must be driven high. This reset operation is not part of the Microchip network protocol stack, and so the NRST must be driven high before initializing the Microchip network stack. When using the chipKIT Ethernet library for the Network Shield, this is done automatically by the library.

## 2.2 USB Interface

The PIC32MX795 microcontroller on the Max32 contains a USB 2.0-compliant, full-speed device and On-The-Go (OTG) controller. This controller has the following features:

- USB full-speed host and device support
- low-speed host support
- USB OTG support
- endpoint buffering anywhere in system RAM
- integrated DMA to access system RAM and Flash memory.

Connector J4, on the top left side of the Network Shield, is a standard USB type-A receptacle. This connector is generally used when the Max32/Network Shield has been programmed to operate as a USB host. The USB device is connected to J4 either directly or via cable.

Connector J2, on the bottom left side of the Network Shield, is the Device/OTG connector. It is a standard USB micro-AB connector. Connect a cable with a micro-A plug (available from Digiilent) from this connector to a USB port on a PC or USB hub.

When the USB controller in the PIC32 microcontroller on the Max32 board is in use, it takes over the use of several of the pins. The signals provided by these pins appear on connector J13 on the Network Shield (connector J9 on the Max32). Two additional signals are used when doing USB hosting. These signals appear on AN5 and digital pin 2. These pins are not available when using the USB interface.

When operating as a USB device, the chipKIT Max32/Network Shield will normally be a self-powered device. To operate as a self-powered device, an external power supply should be connected to the external power connector J2 on the Max32 board. If the external power supply is a regulated 5V supply, jumper JP1 on the Max32 should be set in the BYP position to bypass the on-board 5V regulator.

The Max32/Network Shield can also be operated as a self-powered device powered by USB connector J1 on the Max32. This is the connector used by the USB serial converter. When operated this way, the Max32/Network Shield will be a bus-powered device from the perspective of the USB port connected to J1, and a self-powered device from the perspective of the port connected to the USB connector J2 on the Network Shield.

Operation of the Max32/Network Shield as a bus-powered device is possible although not recommended in most cases. The USB bus voltage from USB connector J2 appears on pin 1 of jumper JP4. Remove the shorting block from JP4 and move the jumper from pin 1 to any point on the board that connects to the 5V VCC5V0 bus. The VCC5V0 bus can be accessed from power connector J17, pin 3. It can also be accessed from either pin of J14, the uppermost two pins on the connector on the right edge of the board. When operating the board in this way, be aware that if the USB serial converter on the Max32 is connected to a live USB port, the 5V power supplies of the two USB ports (the one connected to the Max32 and the one connected to the Network Shield) will be shorted together. If these are not the same power supply (i.e., both USB ports are on the same PC), one or both USB ports and/or the Max32 or Network Shield may be damaged.

When operating as a USB host, the Max32/Network Shield should be externally powered. Connect a power supply to the external power connector J2 on the Max32. If the external supply is a regulated 5V supply, place JP1 on the Max32 in the BYP position to bypass the 5V regulator. The power supply must be able to supply enough current to power both the Max32/Network Shield and the attached USB device, because the Max32/Network Shield provides power to the attached USB device when operating as a host.

Jumper JP4 on the Network Shield is used to route power to the host connector being used. Place the shorting block in the “A” position when using the standard USB type-A (host) connector J4. Place the shorting block in the “MICRO” position for use with the USB micro-AB (OTG) connector J2.

When operating as a USB host, the PIC32MX795 microcontroller controls application of power to the connected device via the VBUSON control pin (labeled VBUSON in the schematic). Bus power is applied to the USB bus by driving the VBUSON pin high. Power is removed from the bus by driving the VBUSON pin low. The VBUSON pin is accessed via bit 3 of the U1OTGCON register. The VBUSON signal is shared with same microcontroller pin as analog input A5 and digital pin 59.

The VBUSON pin drives the enable input of a TPS2051B current-limited power distribution switch to control the application of USB power to the host connector. This switch has over-current detection capability and provides an over-current fault indication by pulling the signal USB0C low. The over-current output pin can be monitored via the INT1/RE8 pin on the PIC32MX795 microcontroller. This signal appears on connector J14, pin 5 on the Max32 board, and chipKIT digital pin 2. Details about the TPS2051B are available from the data sheet at the Texas Instruments web site.

The VBUSON signal is shared with the same microcontroller pin as analog input A5 and digital pin 59. This pin is not available for other uses when operating as a USB host. If the Max32/Network Shield is not being used as a USB host, you can use A5/pin 59 by cutting the trace on the bottom of JP3. USB host capability can be restored by soldering a 2-pin header to JP3 and installing a shorting block.

The PIC32 USB controller can be accessed using the chipKIT USB libraries for use within the MPIDE environment.

When using the Max32/Network Shield outside the MPIDE environment, the Microchip Application Library provides USB stack code that can be used with the Max32/Network Shield. There are reference designs available on the Microchip web site demonstrating both device and host operation of PIC32 microcontrollers. These reference designs are suitable for developing USB firmware for the Max32/Network Shield.

## 2.3 CAN Interface

The Controller Area Network (CAN) is a control networking standard originally developed for use in automotive systems, but has since become a standard used in various industrial control and building automation networking applications as well.

The PIC32MX795 microcontroller on the Max32 contains two independent CAN network controllers. These CAN controllers in combination with two Microchip MCP2551 CAN transceivers on the Network Shield allow the Max32/Network Shield to operate on one or two independent CAN networks.

When not using the MPIDE environment, refer to the PIC32MX7XX data sheet, the *PIC32 Family Reference Manual*, and the CAN network documentation available at [www.microchip.com](http://www.microchip.com) for information on CAN controllers and CAN networking in general.

The PIC32MX795 microcontroller provides two sets of pins that can be used to connect the CAN controllers to the external transceivers. The Max32/Network Shield is designed to use the alternate (not the standard) pins. This selection is made using the configuration variables in the microcontroller, set using a `#pragma config` statement. To select the use of the alternate interface pins, the following statement must appear in the main program module:

```
#pragma config FCANIO=OFF
```

When using the Max32/Network Shield within the MPIDE environment, the boot loader on the Max32 boards sets this configuration automatically. When using the boards outside the MPIDE environment, you must configure this setting.

The pins on the PIC32MX795 microcontroller used by signals for the CAN1 controller to connect to its transceiver are shared with two of the signals for UART3B and SPI port 3A. These signals appear on pins 14 & 15 of connector J4 on the Max32 board. Jumpers JP1 and JP5 enable you to use these pins if neither of the CAN networks are needed. There are cuttable traces on the bottom of the board between the pins of JP1 and JP5. Cut these traces to disconnect the transceiver for CAN1. To restore the connection, load two pin headers for JP1 and JP5 and install shorting blocks on the two jumpers.

Pins 15 and 16 on the PIC32MX795 microcontroller are used by the CAN2 signals and appear on connector J13 on the Network Shield (connector J9 on the Max32). They are digital pins 22 and 23 and are not available for any other use when using CAN2.

There is no standard connector for use with CAN networks. The Network Shield has two 2x6 pin header connectors for access to the CAN signals. Connector J3 provides access to the signals for the CAN1 network controller, and connector J5 provides access to the signals for CAN2. Refer to the schematic for the Network Shield or the tables at the end of this document for information on the connectors and signals. A Digilent 6-pin or 2x6 to dual 6-pin cables can be used to daisy chain Digilent boards together in a CAN network. A Digilent 6-pin cable and a Digilent PmodCON1 Screw Terminal Connector module can be used to connect the Max32/Network Shield to other network wiring configurations.

The CAN network standard requires that the nodes at each end of a network provide 120-ohm termination. The Network Shield provides the termination resistors and jumpers to enable/disable them depending on the location of the board in the network. Jumper JP2 is used to enable/disable the termination resistor for the CAN1 network, and JP7 is used to enable/disable the termination resistor for CAN2. Install a shorting block on the jumper pins to enable the termination resistor, or remove the shorting block to disable the termination resistor.

## 2.4 I<sup>2</sup>C Busses and Connectors

The Inter-Integrated Circuit (I<sup>2</sup>C) interface provides a medium-speed (100K or 400K bps) synchronous serial communications bus. The I<sup>2</sup>C interface provides master and slave operation using either 7-bit or 10-bit device addressing. Each device is given a unique address, and the protocol provides the ability to address packets to a specific device or to broadcast packets to all devices on the bus. Refer to the PIC32MX7XX data sheet and the *PIC32 Family Reference Manual*, both available at [www.microchip.com](http://www.microchip.com), for detailed information on configuring and using the I<sup>2</sup>C interface.

The PIC32MX795 microcontroller on the Max32 provides for up to five independent I<sup>2</sup>C interfaces. The Network Shield is designed to provide access to two of these interfaces: I<sup>2</sup>C #1 (SCL1, SDA1) and I<sup>2</sup>C #2 (SCL2, SDA2). I<sup>2</sup>C #1 is the bus accessed through the standard chipKIT Wire library (see the MPIDE Help reference for more information on the standard libraries). There are five sets of pins on the board for access to the two I<sup>2</sup>C ports. Connectors J7, J16, and J19 provides access to I<sup>2</sup>C port #1 and connector J6 and digital pins 12 and 13 provides access to I<sup>2</sup>C port #2.

Note that external interrupt 3 and SCL1 share the same pin on the PIC32MX795. External interrupt 4 and SDA1 also share the same pin. Therefore, external interrupts 3 and 4 should not be used simultaneously with I<sup>2</sup>C#1 bus.

One I<sup>2</sup>C device is provided on the Network Shield, a 256Kbit EEPROM connected to the I<sup>2</sup>C #1 bus.

Connectors J6 and J7 can be used to extend the I<sup>2</sup>C busses off of the board to connect to external I<sup>2</sup>C devices. These are standard 2x4 pin header connectors with 0.100" spaced pins. They provide access to the I<sup>2</sup>C signals, SCL and SDA, plus VCC3V3 and ground. The VCC3V3 can be used to power external I<sup>2</sup>C devices.

The I<sup>2</sup>C bus uses open-collector drivers to allow multiple devices to drive the bus signals. This means that pull-up resistors must be provided to supply the logic high state for the signals. The Network Shield provides 2.2Kohm pull-up resistors on I<sup>2</sup>C #1. Because I<sup>2</sup>C #1 is the bus with the EEPROM, these pull-up resistors are permanently connected.

Jumpers JP9 & JP12 let I<sup>2</sup>C #1 be disconnected from the Network Shield if it is not in use but is interfering with the associated pins. There are cuttable traces on the underside of the board between the pins of these jumpers. Cut these traces to disconnect SCL1 and SDA1 from the Network Shield. To restore the connection, load two pin headers for JP9 and JP12 and install shorting blocks. If this is done, it is still possible to access the on-board EEPROM by connecting SCL and SDA from I<sup>2</sup>C #2 by installing jumper wires between connector J6 and J7. The EEPROM will then appear on I<sup>2</sup>C #2 bus.

The logic high pull-up for I<sup>2</sup>C #2 is provided by sourcing current mirrors instead of resistors. These current mirrors source approximately 1.7mA. The use of current mirrors provides faster rise times on the I<sup>2</sup>C signals and provides the ability to drive longer cable runs reliably than would be the case with simple pull-up resistors.

Generally, only one set of pull-ups is used on the bus. Jumpers JP10 and JP11 can be used to disable the on-board pull-ups on I<sup>2</sup>C #2 if a different value is needed or some other device on the bus is providing the pull-ups or if I<sup>2</sup>C #2 isn't being used and the pull-ups are interfering with the use of the pins. The on-board pull-ups are enabled by install shorting blocks on JP10 and JP11. Removing the shorting blocks disables the pull-ups.

Digilent has several small I/O peripheral modules (Pmods™) available that can be connected using the I<sup>2</sup>C connector. These include a 3-axis accelerometer, a 4-channel 12-bit A/D converter, a serial character LCD panel, a 3-axis gyroscope, a real-time clock/calendar, and an I/O expander.

## 2.4.1 EEPROM

A 256Kbit (32Kbyte) I<sup>2</sup>C EEPROM is provided using a Microchip 24LC256. This EEPROM, IC5, is located on the bottom of the board.

The EEPROM is on the I<sup>2</sup>C #1 bus, and its 7-bit I<sup>2</sup>C device address is '1010000'.

Digilent has a library for using the EEPROM. It is contained in document # DSD-0000311 (chipKIT IOShield Library.zip) which can be downloaded from the Basic I/O Shield product page at [www.digilentinc.com](http://www.digilentinc.com). The EEPROM library is IOShieldEEPROM.

For details on the 24LC256, see the data sheet at [www.microchip.com](http://www.microchip.com).

## 2.5 32.768 KHz Oscillator

A 32.768 KHz oscillator is provided for use as a clock source for the real-time clock/calendar (RTCC) peripheral in the PIC32MX796 microcontroller on the Max32 board. The output of this oscillator connects to pin 12 or connector J11.

On the Max32 board, this signal connects to signal RC13, which connects to pin 73 on the PIC32 microcontroller. This pin provides the secondary oscillator input, which can be used to clock the RTCC in the PIC32 microcontroller.



## Appendix A: chipKIT Network Shield Pinout Tables

### Pins Used by the Ethernet Interface

chipKIT Pin #	PIC32 Pin #	Pin	Signal	Notes
46	88	J10-8	C1TX/ETXD0/PMD10/RF1	ETXD0
45	87	J10-9	C1RX/ETXD1/PMD11/RF0	ETXD1
47	83	J10-7	ETXEN/PMD14/CN15/RD6	ETXEN
48	68	J10-6	RTCC/EMDIO/AEMDIO/IC1/RD8	EMDIO
49	71	J10-5	EMDC/AEMDC/IC4/PMCS1/PMA14/RD11	EMDC
53	14	J10-1	ERXCLK/AERXCLK/EREFCLK/AEREFCLK/SS2A/U2BRX/ U2ACTS/PMA2/CN11/RG9	EREFCLK
43	12	J10-11	ERXDV/AERXDV/ECRSRV/AECRSRV/SCL2A/SDO2A UATX/PMA3/CN10/RG8	ECRSRV
40	35	J10-14	AN11/ERXERR/AETXERR/PMA12/RB11	ERXERR
42	41	J10-12	AN12/ERXD0/AECRS/PMA11/RB12	ERXD0
41	42	J10-13	AN13/ERXD1/AECOL/PMA10/RB13	ERXD1
7	19	J11-15	AERXD0/INT2/RE9	NRST

### Pins Used by the USB Interface

chipKIT Pin #	PIC32 Pin #	Pin	Signal	Notes
27	57	J13-11	USB+/RG2	
26	56	J13-12	USB-/RG3	
25	51	J13-13	USBID/RF3	
A5/59	20	J9-6	AN5/C1IN+/VBUSON/CN7/RB5	
2	18	J11-5	AERXD0/INT1/RE8	

### Pins Used by CAN Interfaces

chipKIT Pin #	PIC32 Pin #	Pin	Signal	Notes
14	39	J16-8	AC1TX/SCK3A/U3BTX/U3ARTS/RF13	CAN1
15	40	J16-7	AC1RX/SS3A/U3BRX/U3ACTS/RF12	CAN1
22	7	J10-16	T3CK/AC2TX/RC2	CAN2
23	8	J10-15	T4CK/AC2RX/RC3	CAN2

## Pins Used by I2C Interfaces

chipKIT Pin #	PIC32 Pin #	Pin	Signal	Notes
21	66	J16-1, J19-2, J7-1, J7-2	AETXCLK/SCL1/INT3/RA14	I2C1 – also attached to EXT INT 3
20	67	J16-2, J19-1, J7-3, J7-4	AETXEN/SDA1/INT4/RA15	I2C1 – also attached to EXT INT 4
12	58	J8-9, J6-1, J6-2	SCL2/RA2	I2C2
13	59	J8-11, J6-3 J6-4	SDA2/RA3	I2C2

## X-ON Electronics

Largest Supplier of Electrical and Electronic Components

*Click to view similar products for [Ethernet Development Tools](#) category:*

*Click to view products by [Digilent](#) manufacturer:*

Other Similar products are found below :

[KSZ8852HLEYA](#) [TDKEZW5-DEV](#) [XAUI-RISER-B](#) [DP83848H-MAU-EK](#) [ZENETSC0100ZACG](#) [XTIB-E](#) [EVB-LAN9218I-MINI](#)  
[KSZ8081MNX-EVAL](#) [KSZ8081RNB-EVAL](#) [KSZ8091RNB-EVAL](#) [KSZ8852HLE-EVAL](#) [KSZ8863FLL-EVAL](#) [KSZ8873MLL-EVAL](#) [2971](#)  
[TDKEZW3-DEV](#) [PD70201EVB47F](#) [KSZ8895MQX-EVAL](#) [PD70201EVB47](#) [PD-IM-7648M](#) [PD-IM-7648T4](#) [PD-IM-7604-4MH](#)  
[EV09H26A](#) [EV44F42A](#) [EVB-LAN7850](#) [PD-IM-7618T4H](#) [PD-IM-7618T4](#) [EVAL-ADIN1300FMCZ](#) [EVAL-ADIN1200FMCZ](#) [KIT-A1006-](#)  
[SHIELD](#) [VSC8258EV](#) [VSC8211EV](#) [VSC8584EV](#) [VSC8574EV](#) [EV16T60A](#) [DP83620-EVK/NOPB](#) [STEVAL-TDE001V1](#) [STEVAL-](#)  
[PCC010V1](#) [EVB9512](#) [DP83848T-MAU-EK](#) [DP83848I-POE-EK](#) [DP83848K-MAU-EK](#) [DP83848I-MAU-EK/NOPB](#) [KSZ8041NL-EVAL](#)  
[KSZ8999-EVAL](#) [KSZ8031RNL-EVAL](#) [KSZ8051MLL-EVAL](#) [KSZ8842-16MQL-EVAL](#) [WIZ550S2E-232-EVB](#) [ALT4532-EVA-01](#)  
[MIKROE-2796](#)