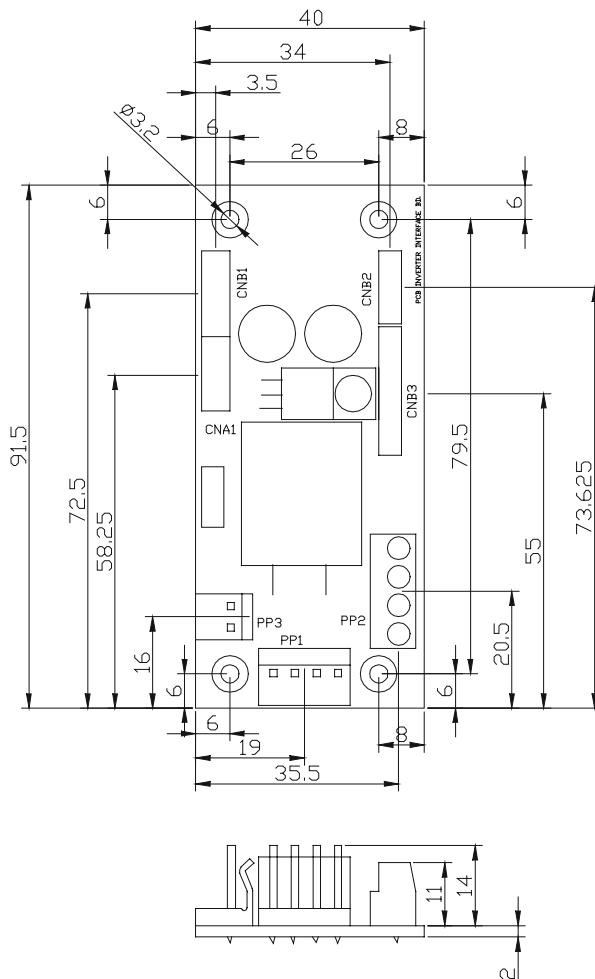


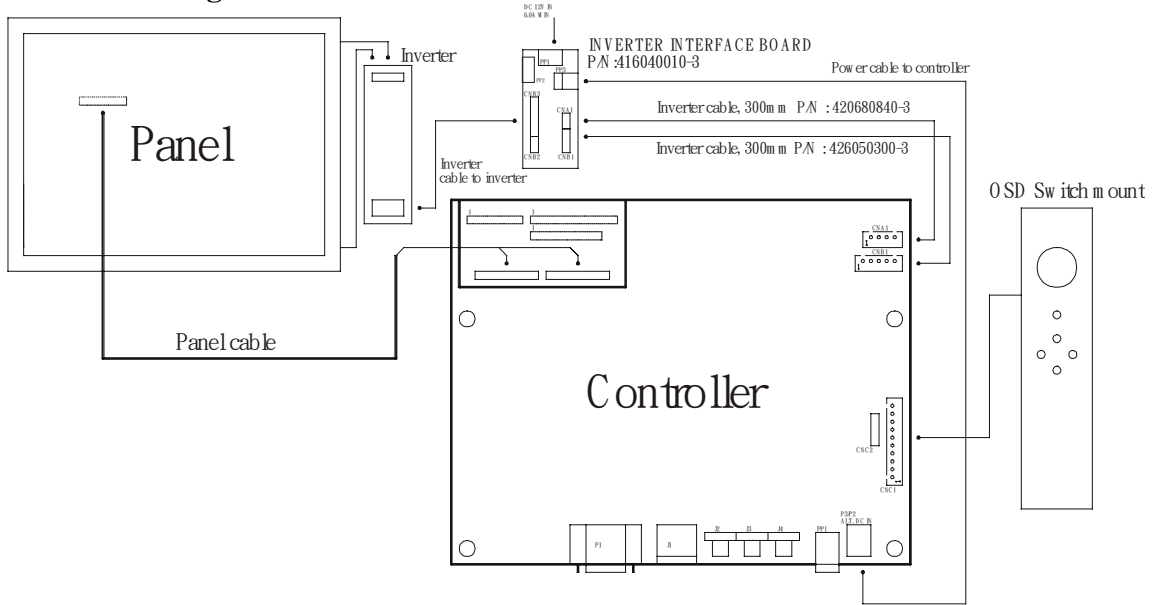
The Inverter interface board provides interface to drive up the high current consumption panel inverter in excess of 3.5A. This board enables current of up to 8 Amps to be managed safely while retaining the capability for inverter dimming and management of the inverter enable signal according to VESA DPMS standards. Additionally, the inverter interface board provides over-voltage protection via a resettable fuse when the input voltage exceeds 13V and reverse polarity protection against accidental misconnection.



Connector Type :

- CNA1, CNB2 : JST 4 ways, B4B-XH-A
- CNB1 : JST 5 ways, B5B-XH-A
- CNB3 : JST 8 ways, B8B-XH-A
- PP1 : PWR 4 way
- PP2 : Terminal Block 2 poles x 2
- PP3 : PWR 2 ways

Illustrated Diagram :



PP1 - 12VDC power supply – input, Power header 4 ways 0.156” pitch

| PIN | DESCRIPTION |
|-----|-------------|
| 1 | +12VDC |
| 2 | +12VDC |
| 3 | Ground |
| 4 | Ground |

PP2 – Alternate 12VDC power supply – input, Terminal Block 2 poles

| PIN | DESCRIPTION |
|-----|-------------|
| 1 | +12VDC |
| 2 | +12VDC |
| 3 | Ground |
| 4 | Ground |

PP3 – 12VDC power supply to controller – Output, Power header 2 ways, 0.156” pitch

| PIN | DESCRIPTION |
|-----|-------------|
| 1 | +12VDC |
| 2 | Ground |

CNA1 - Inverter interface to controller, JST B4B-XH-A

| PIN | SYMBOL | DESCRIPTION |
|-----|---------|-------------------|
| 1 | NC | No connection |
| 2 | AUX_GND | Ground |
| 3 | AUX_GND | Ground |
| 4 | AUX_Vcc | +5V DC, 500mA max |

CNB1 – Inverter interface to controller, JST B5B-XH-A

| PIN | SYMBOL | DESCRIPTION |
|-----|---------|---------------------------------|
| 1 | GND | Ground |
| 2 | BL_ON | Backlight power |
| 3 | BLCTRL | Backlight on/off control signal |
| 4 | BVR_WIP | Backlight brightness VR pin WIP |
| 5 | BVR_A | Backlight brightness VR pin A |

CNB2 – Inverter interface to backlight inverter, JST B4B-XH-A

| PIN | SYMBOL | DESCRIPTION |
|-----|---------|-------------------|
| 1 | VLCD12 | Panel power |
| 2 | AUX_GND | Ground |
| 3 | AUX_GND | Ground |
| 4 | AUX Vcc | +5V DC, 500mA max |

CNB3 – Inverter interface to backlight inverter, JST B8B-XH-A

| PIN | SYMBOL | DESCRIPTION |
|-----|---------|---------------------------------|
| 1 | VLCD12 | Panel power |
| 2 | VLCD12 | Panel power |
| 3 | GND | Ground |
| 4 | GND | Ground |
| 5 | VLCD12 | Panel power |
| 6 | BLCTRL | Backlight on/off control signal |
| 7 | BVR_WIP | Backlight brightness VR pin WIP |
| 8 | BVR_A | Backlight brightness VR pin A |

X-ON Electronics

Largest Supplier of Electrical and Electronic Components

Click to view similar products for [Power Management Modules](#) category:

Click to view products by [Digital View](#) manufacturer:

Other Similar products are found below :

[FPF1C2P5BF07A](#) [FH2000NPBAP](#) [B0505S-2W](#) [B0305S-1W](#) [B0505S-1WR3](#) [AP24N20-HV](#) [TAD10-1505-NI](#) [TDK30-24S15W](#) [LD03-23B05R2](#) [LD05-23B12R2](#) [URB2415YMD-10WR3](#) [A2409S-1W](#) [IB2412LS-1WR3](#) [IF2405S-1WR3](#) [IB2405S-W75R3](#) [A1205XT-1WR3](#) [A1215XT-1WR3](#) [F1205XT-2WR3](#) [E1215XT-1WR3](#) [E2415XT-1WR3](#) [F1205XT-1WR3](#) [IB1205XT-W75R3](#) [A2405S-1WR2](#) [A1215S-1WR2](#) [A2415S-1WR2](#) [B2405D-1WR3](#) [F1205N-1WR3](#) [F2405N-1WR3](#) [F1205S-2WR3](#) [F2405S-2WR3](#) [HCS2-24S12](#) [HCES1-05S12](#) [HCES1-24S05](#) [HCES1-05D05](#) [HCES1-12D05](#) [HCES2-05D15](#) [HCES2-24D12](#) [HCS1-24D12](#) [HCES2-24S15](#) [UD6-18S15A1](#) [HA25-220S24H2](#) [FD30-18S12B3](#) [IA1205KS-2W](#) [IA2405KS-2W](#) [B1505S-1WX](#) [NV25A12](#) [H14NG03-A05](#) [H14NG03-A12](#) [WG15A05](#) [NJ02-A05L](#)