

## Fiber Optic Patch Cords



OM5 - LC/LC

✓ Duplex patch cord

✓ Individual test report

✓ LSZH outer sheath

✓ various connectors & fiber classes

### Abstract

Fiber optic patch cords, duplex, various connectors, Singlemode & Multimode, OM1 to OM5

### Features

- LSZH (Low Smoke Zero Halogen) outer sheath
- I-VH-2G-XXX (Multimode); I-VH-2E-XXX (Singlemode)
- Cable outer diameter: OM1 to OM4: 3.0 mm; OM5: 2.0 mm
- Connectors with ceramic ferrule
- Available with PC (physical contact) and 8° APC (angled physical contact) polish
- Double colored kink protection sleeves (on Multimode cables up to OM4)
- Each cable with test report in polybag
- Available connectors: LC, SC, ST (E2000/LSH please see separate data sheet)
- Available fiber classes: OS2 (09/125 μ), OM1 (62.5/125 μ), OM2, OM3, OM4 & OM5 (50/125 μ)

### Product Overview

The Fiber Optic Patch Cords are available in various fiber classes and connector combinations to cover all necessary requirements. Each cable is single packed in a polybag with a test report that guarantees best performance in typical application scenarios like telecommunication, rack cabling, sensor technologies or industrial applications.

### Technical Properties

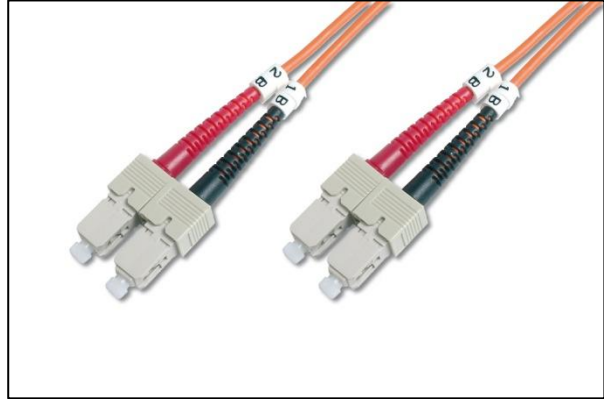
| Description                            | Value               |
|--|---------------------|
| Insertion loss                         | ≤ 0.30 dB           |
| Return loss                            | ≥ 30 dB (UPC)       |
| Storage- & operating temperature range | -40 °C up to +85 °C |
| Length tolerance ≤ 10 m                | +100 mm/-0 mm       |
| Length tolerance > 11 m                | +50 mm/-0 mm        |

**Product Images**

**SM OS2 - ST to ST**



**MM OM1 - SC to SC**



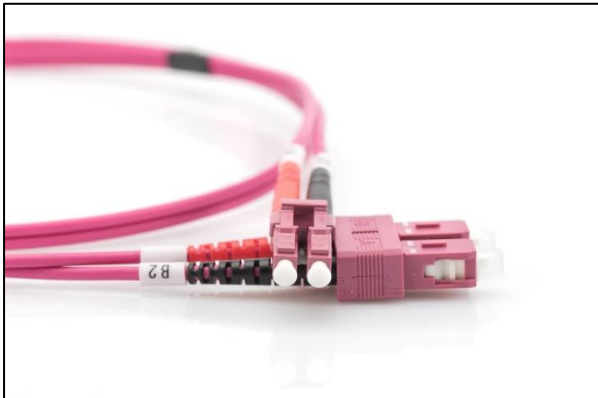
**MM OM2 - LC to LC**



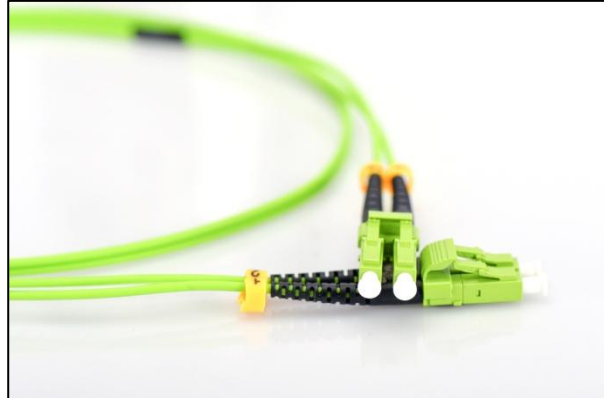
**MM OM3 - ST to SC**



**MM OM4 - LC to SC**

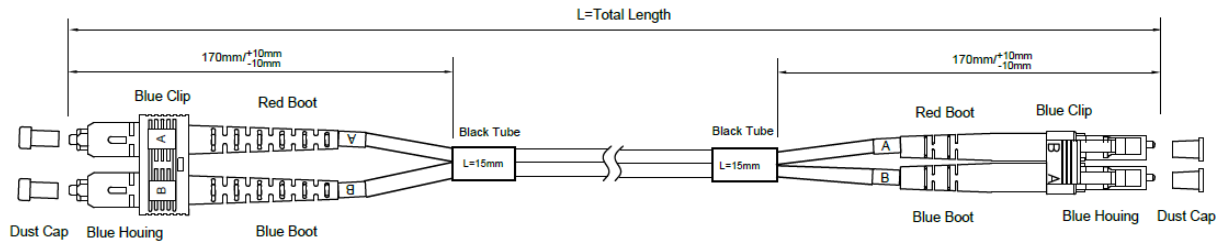


**MM OM5 - LC to LC**



## Technical Drawings

### Example SM OS2 - SC to LC



## Product Number Information

### MM OM5

| Item code    | Connector 1 | Connector 2 | Polish |
|--------------|-------------|-------------|--------|
| DK-2533-xx-5 | LC          | LC          | PC     |
| DK-2522-xx-5 | SC          | SC          |        |

\* xx = choose a length (e.g. 1 meter = "01"; 10 meter = "10"; etc.)

### MM OM4

| Item code    | Connector 1 | Connector 2 | Polish |
|--------------|-------------|-------------|--------|
| DK-2533-xx-4 | LC          | LC          | PC     |
| DK-2522-xx-4 | SC          | SC          |        |
| DK-2532-xx-4 | LC          | SC          |        |
| DK-2531-xx-4 | LC          | ST          |        |
| DK-2511-xx-4 | ST          | ST          |        |
| DK-2512-xx-4 | ST          | SC          |        |

\* xx = choose a length (e.g. 1 meter = "01"; 10 meter = "10"; etc.)

### MM OM3

| Item code    | Connector 1 | Connector 2 | Polish |
|--------------|-------------|-------------|--------|
| DK-2533-xx/3 | LC          | LC          | PC     |
| DK-2522-xx/3 | SC          | SC          |        |
| DK-2532-xx/3 | LC          | SC          |        |
| DK-2531-xx/3 | LC          | ST          |        |
| DK-2511-xx/3 | ST          | ST          |        |
| DK-2512-xx/3 | ST          | SC          |        |

\* xx = choose a length (e.g. 1 meter = "01"; 10 meter = "10"; etc.)

### MM OM2

| Item code  | Connector 1 | Connector 2 | Polish |
|------------|-------------|-------------|--------|
| DK-2533-xx | LC          | LC          | PC     |
| DK-2522-xx | SC          | SC          |        |
| DK-2532-xx | LC          | SC          |        |
| DK-2531-xx | LC          | ST          |        |
| DK-2511-xx | ST          | ST          |        |
| DK-2512-xx | ST          | SC          |        |

\* xx = choose a length (e.g. 1 meter = "01"; 10 meter = "10"; etc.)

**MM OM1**

| Item code  | Connector 1 | Connector 2 | Polish |
|------------|-------------|-------------|--------|
| DK-2633-xx | LC          | LC          | PC     |
| DK-2622-xx | SC          | SC          |        |
| DK-2632-xx | LC          | SC          |        |
| DK-2631-xx | LC          | ST          |        |
| DK-2611-xx | ST          | ST          |        |
| DK-2612-xx | ST          | SC          |        |

\* xx = choose a length (e.g. 1 meter = "01"; 10 meter = "10"; etc.)

**SM OS2**

| Item code        | Connector 1 | Polish 1 | Connector 2 | Polish 2 |
|------------------|-------------|----------|-------------|----------|
| DK-2933-xx       | LC          | PC       | LC          | PC       |
| DK-2922-xx       | SC          |          | SC          |          |
| DK-2932-xx       | LC          |          | SC          |          |
| DK-2931-xx       | LC          |          | ST          |          |
| DK-2911-xx       | ST          |          | ST          |          |
| DK-2912-xx       | ST          |          | SC          |          |
|                  |             |          |             |          |
| DK-293LCA3LC-xx  | LC          | APC      | LC          | PC       |
| DK-292SCA2SC-xx  | SC          |          | SC          |          |
| DK-292SCA3LC-xx  | SC          |          | LC          |          |
|                  |             |          |             |          |
| DK-293LCA3LCA-xx | LC          | APC      | LC          | APC      |
| DK-292SCA2SCA-xx | SC          |          | SC          |          |
| DK-292SCA3LCA-xx | SC          |          | LC          |          |

\* xx = choose a length (e.g. 1 meter = "01"; 10 meter = "10"; etc.)

## X-ON Electronics

Largest Supplier of Electrical and Electronic Components

*Click to view similar products for [Fibre Optic Cable Assemblies](#) category:*

*Click to view products by [Digitus](#) manufacturer:*

Other Similar products are found below :

[F9L12D5-5F26](#) [FXE3-10CM3](#) [2061529-7](#) [FXE3-10EM3](#) [10114734-2030LF](#) [2123524-2](#) [2125046-1](#) [2821236-3](#) [2821310-2](#) [2821310-3](#)  
[2821313-4](#) [FOLPC-2.5MM](#) [KFOLPC-1.25MM](#) [KFOLPC-1.25SM](#) [FOLPC-1.25MM](#) [FOLPC-1.25SM](#) [FOSPR40-L](#) [17-300310-100](#) [G-FC-](#)  
[FC-S-002.0-DX-A-18-Y](#) [G-E2A-E2A-S-003.0-SX-A-18-Y](#) [NKO2S-XP-0-31](#) [100CQQF3020](#) [956-322-502214](#) [DK-2511-03](#) [DK-2511-05](#)  
[DK-2512-02](#) [DK-2522-01](#) [DK-2532-10-4](#) [DK-2922-01](#) [DK-2922-02](#) [DK-2932-01](#) [DK-2933-02](#) [DK-2522-03](#) [DK-2531-02](#) [DK-2533-01](#) [DK-](#)  
[2533-01/3](#) [DK-2533-02/3](#) [DK-2911-01](#) [DK-2911-03](#) [DK-2912-10](#) [DK-2922-03](#) [DK-2932-02](#) [DK-2932-05](#) [DK-2933-05](#) [DK-2933-10](#)  
[29011102](#) [29011202](#) [29011302](#) [29011402](#) [29011902](#)