

**BIPOLAR HALL-EFFECT POSITION SENSORS****AH41****General Description**

The AH41 is an integrated Hall-effect latched sensor designed for electronic commutation of brushless DC motor applications. The device includes an on-chip Hall voltage generator for magnetic sensing, a comparator that amplifies the Hall voltage, and a Schmitt to provide switching hysteresis for noise rejection and open-collector output. An internal bandgap regulator is used to provide temperature compensated supply voltage for internal circuits and allows a wide operating supply range.

A north pole of sufficient strength will turn the output ON. In the absence of a magnetic field, the output is OFF.

This IC is available in TO-92S-3 package.

**Features**

- On-chip Hall Sensor
- Wide Operating Voltage Range: 4V to 24V
- Internal Bandgap Regulator for Temperature Compensation
- Maximum Output Sink Current: 50mA
- Low Profile TO-92S-3
- Operating Temperature: -40°C to 150°C
- ESD Rating: 2000V (Human Body Model)  
300V (Machine Model)

**Application**

- Brushless DC Motor

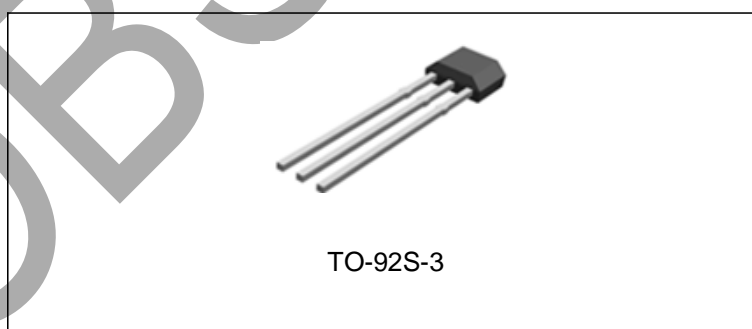


Figure 1. Package Type of AH41

**Pin Configuration**

Z3 Package  
(TO-92S-3)

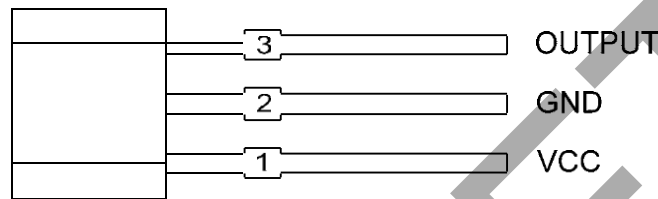


Figure 2. Pin Configuration of AH41 (Front View)

**Pin Description**

Pin Number	Pin Name	Function
1	VCC	Power supply pin
2	GND	Ground pin
3	OUTPUT	Output pin. It is low during the N magnetic field

**Functional Block Diagram**

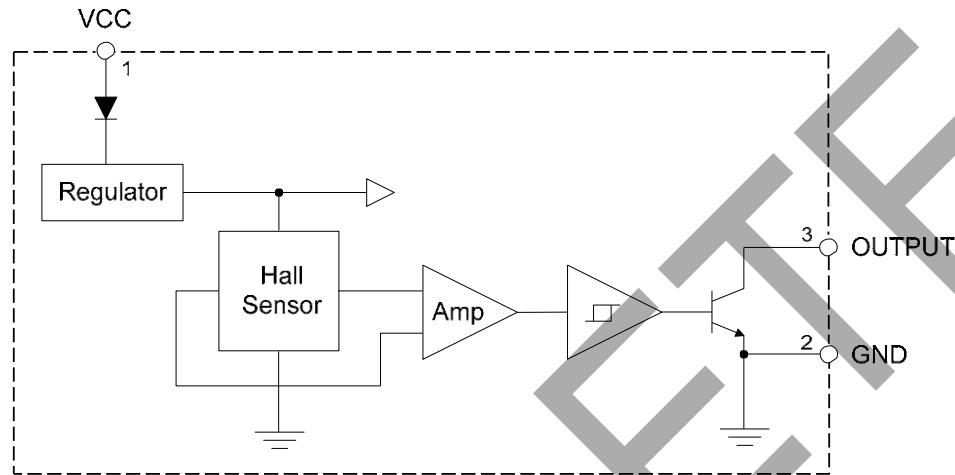
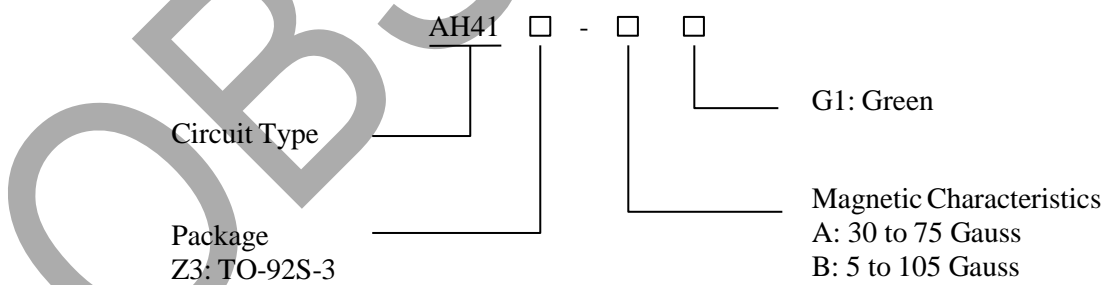


Figure 3. Functional Block Diagram of AH41

**Ordering Information**



Package	Temperature Range	Part Number	Marking ID	Packing Type
TO-92S-3	-40 to 150°C	AH41Z3-AG1	AH41	Bulk
		AH41Z3-BG1	AH41	Bulk

BCD Semiconductor's Pb-free products, as designated with "G1" suffix in the part number, are RoHS compliant and green.

**BIPOLAR HALL-EFFECT POSITION SENSORS**
**AH41**
**Absolute Maximum Ratings (Note 1)**

Parameter	Symbol	Value	Unit
Supply Voltage	$V_{CC}$	-24 to 28	V
Output OFF Voltage	$V_{CE}$	30	V
Output Sink Current (Continuous Current)	$I_{OUT}$	50	mA
Power Dissipation ( $T_A=25^\circ\text{C}$ )	$P_D$	400	mW
Storage Temperature	$T_{STG}$	-65 to 150	$^\circ\text{C}$
Junction Temperature	$T_J$	150	$^\circ\text{C}$
ESD (Machine Model)		300	V
ESD (Human Body Model)		2000	V

Note 1: Stresses greater than those listed under “Absolute Maximum Ratings” may cause permanent damage to the device. These are stress ratings only, and functional operation of the device at these or any other conditions beyond those indicated under “Recommended Operating Conditions” is not implied. Exposure to “Absolute Maximum Ratings” for extended periods may affect device reliability.

**Recommended Operating Conditions ( $T_A=25^\circ\text{C}$ )**

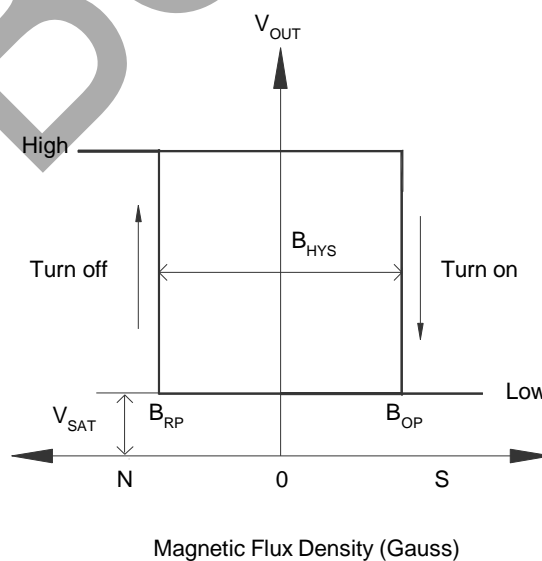
Parameter	Symbol	Min	Max	Unit
Supply Voltage	$V_{CC}$	4	24	V
Operating Temperature	$T_{OP}$	-40	150	$^\circ\text{C}$

**BIPOLAR HALL-EFFECT POSITION SENSORS**
**AH41**
**Electrical Characteristics**
 $V_{CC}=12V$ ,  $T_A=25^{\circ}C$ , unless otherwise specified.

Parameter	Symbol	Conditions	Min	Typ	Max	Unit
Supply Voltage	$V_{CC}$		4		24	V
Supply Current	$I_{CC}$	$V_{CC}=4V$ to $24V$		6	9	mA
Output Leakage Current	$I_{OL}$	$V_{CE}=14V$		0.1	10	$\mu A$
Output Saturation Voltage	$V_{SAT}$	$I_{OUT}=20mA$		110	300	mV
Rise Time	$t_r$	$R_L=820\Omega$ $C_L=20pF$		200		ns
Fall Time	$t_f$	$R_L=820\Omega$ $C_L=20pF$		100		ns

**Magnetic Characteristics ( $T_A=25^{\circ}C$ )**

Parameter	Symbol	Grade	Min	Typ	Max	Unit
Operating Point	$B_{OP}$	A	30		75	Gauss
		B	5		105	
Releasing Point	$B_{RP}$	A	-75		-30	Gauss
		B	-105		-5	
Hysteresis	$B_{HYS}$		80	110	140	Gauss



**Test Circuit**

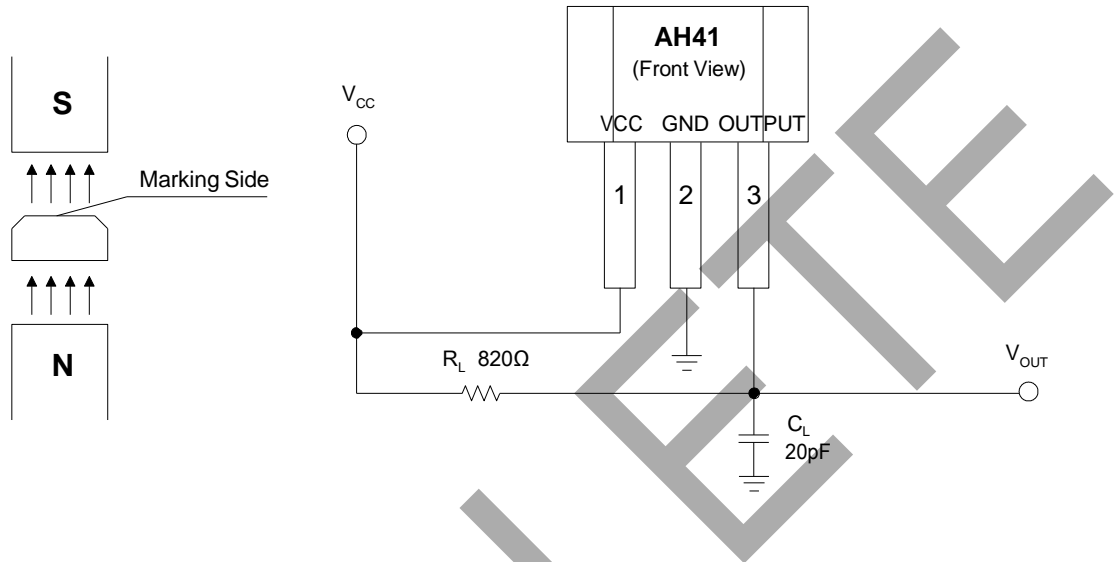


Figure 4. Basic Test Circuit of AH41

OBSOLETE - PART DISCONTINUED

**Typical Performance Characteristics**

OBSOLETE - PART DISCONTINUED

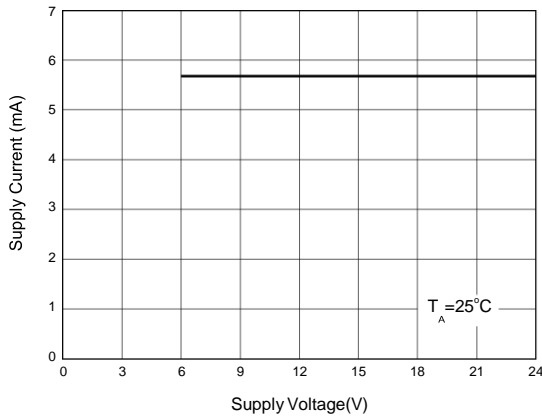


Figure 5. Supply Current vs. Supply Voltage

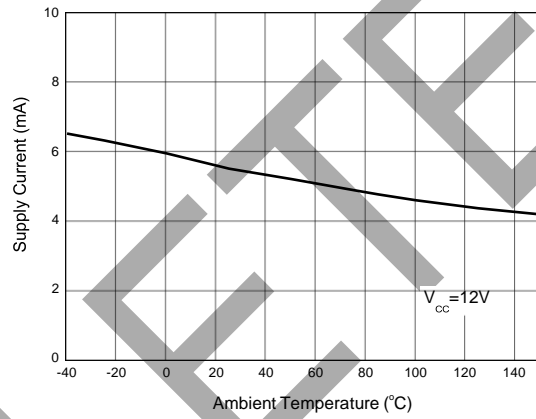


Figure 6. Supply Current vs. Ambient Temperature

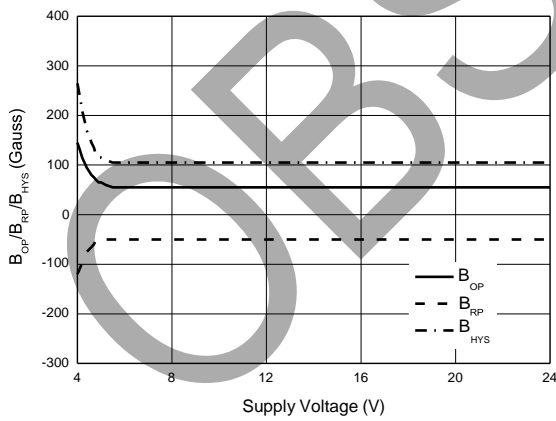


Figure 7. B<sub>OP</sub>/B<sub>RP</sub>/B<sub>HYS</sub> vs. Supply Voltage

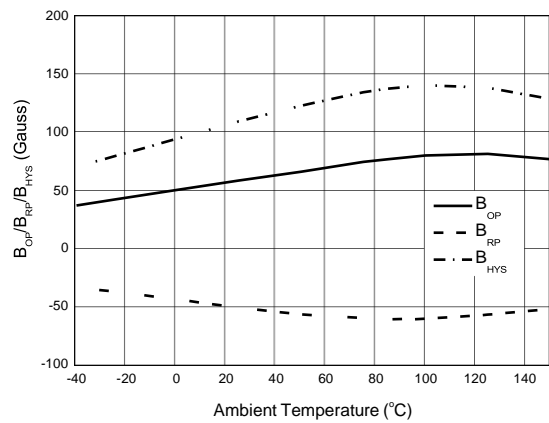


Figure 8. B<sub>OP</sub>/B<sub>RP</sub>/B<sub>HYS</sub> vs. Ambient Temperature

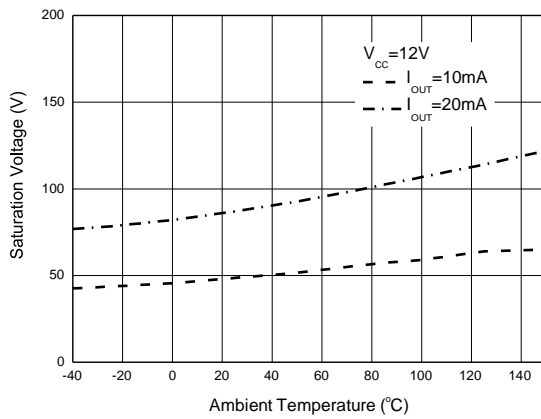
**Typical Performance Characteristics (Continued)**

Figure 9. Saturation Voltage vs. Ambient Temperature



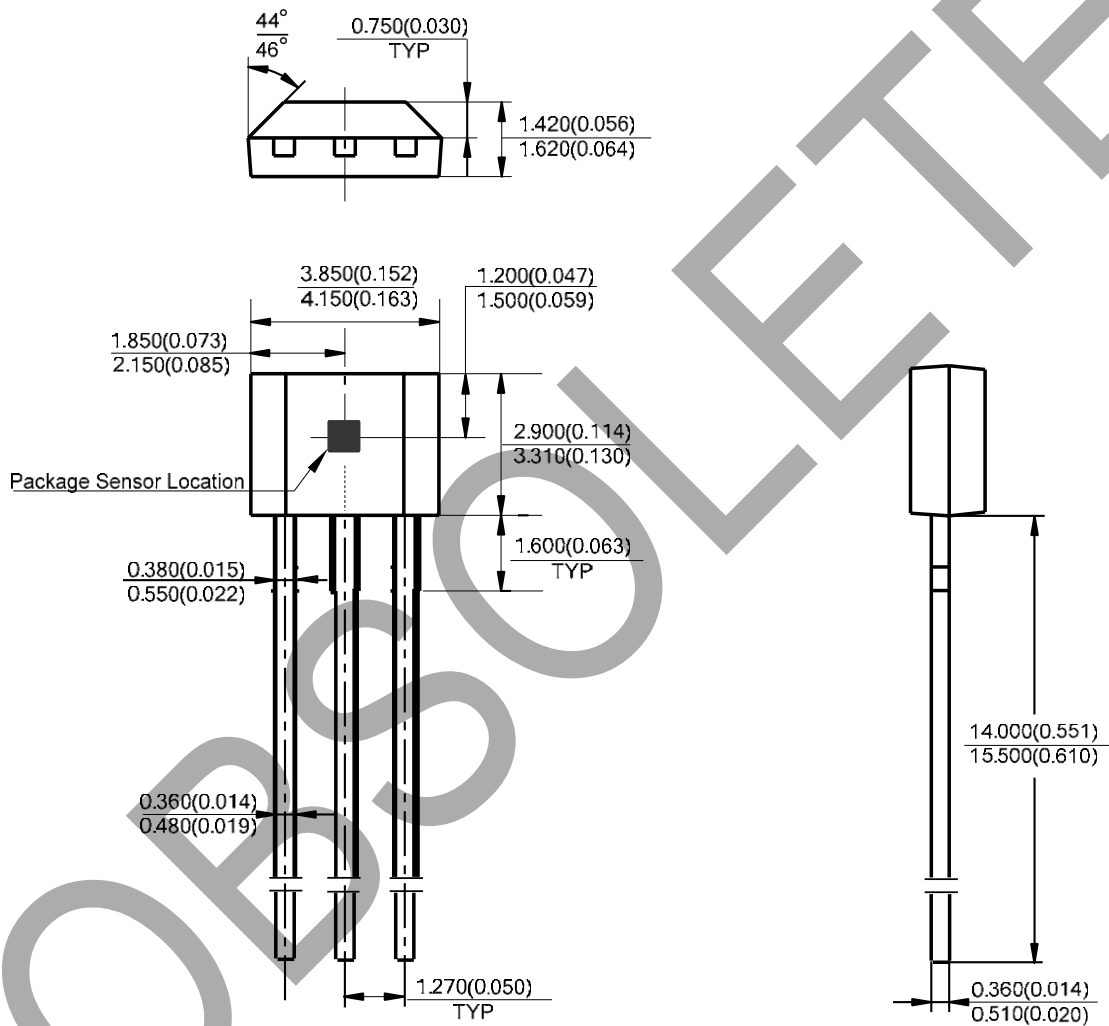
**BIPOLAR HALL-EFFECT POSITION SENSORS**

**AH41**

**Mechanical Dimensions**

**TO-92S-3**

**Unit: mm(inch)**



OBSOLETE - PART DISCONTINUED



## **BCD Semiconductor Manufacturing Limited**

<http://www.bcdsemi.com>

### **IMPORTANT NOTICE**

BCD Semiconductor Manufacturing Limited reserves the right to make changes without further notice to any products or specifications herein. BCD Semiconductor Manufacturing Limited does not assume any responsibility for use of any its products for any particular purpose, nor does BCD Semiconductor Manufacturing Limited assume any liability arising out of the application or use of any its products or circuits. BCD Semiconductor Manufacturing Limited does not convey any license under its patent rights or other rights nor the rights of others.

#### **MAIN SITE**

##### **- Headquarters**

##### **BCD Semiconductor Manufacturing Limited**

No. 1600, Zi Xing Road, Shanghai ZiZhu Science-based Industrial Park, 200241, China  
Tel: +86-21-24162266, Fax: +86-21-24162277

##### **- Wafer Fab**

##### **Shanghai SIM-BCD Semiconductor Manufacturing Co., Ltd.**

800 Yi Shan Road, Shanghai 200233, China  
Tel: +86-21-6485 1491, Fax: +86-21-5450 0008

#### **REGIONAL SALES OFFICE**

##### **Shenzhen Office**

##### **Shanghai SIM-BCD Semiconductor Manufacturing Co., Ltd., Shenzhen Office**

Unit A Room 1203, Skyworth Bldg., Gaoxin Ave. 1.S., Nanshan District, Shenzhen, China

Tel: +86-755-8826 7951  
Fax: +86-755-8826 7865

##### **Taiwan Office**

##### **BCD Semiconductor (Taiwan) Company Limited**

4F, 298-1, Rui Guang Road, Nei-Hu District, Taipei, Taiwan

Tel: +886-2-2656 2808  
Fax: +886-2-2656 2806

##### **USA Office**

##### **BCD Semiconductor Corp.**

30920 Huntwood Ave. Hayward, CA 94544, USA

Tel: +1-510-324-2988  
Fax: +1-510-324-2788

## X-ON Electronics

Largest Supplier of Electrical and Electronic Components

*Click to view similar products for [Board Mount Hall Effect/Magnetic Sensors](#) category:*

*Click to view products by [Diodes Incorporated](#) manufacturer:*

Other Similar products are found below :

[HGPRDT005A](#) [AH1808-P-A](#) [AH277AZ4-AG1](#) [AV-10379](#) [AV-10448](#) [SS41C](#) [AH1894-Z-7](#) [ATS601LSGTN-HT-WU4-T](#) [ATS601LSGTN-LT-WU4-T](#) [TLE4917](#) [50017859-003](#) [TY-13101](#) [SS85CA](#) [AH277AZ4-BG1](#) [TLE49614MXTSA1](#) [AH3382-P-B](#) [AH3377-P-B](#) [AH9250-W-7](#) [AH211Z4-AG1](#) [AH3360-FT4-7](#) [SS460S-100SAMPLE](#) [50065820-03](#) [TLE4941PLUSCB](#) [AH374-P-A](#) [AH1806-P-A](#) [AH374-W-7](#) [SS460P-T2](#) [AH1912-FA-7](#) [SS413F](#) [TLE5046ICAKLRHALA1](#) [TLE49421CHAMA2](#) [TLE4941PLUSCXAMA1](#) [AH1912-W-EVM](#) [AH1903-FA-EVM](#) [AH3774-W-EVM](#) [AH49FNTR-EVM](#) [MMC5633NJL](#) [AH3360-FA-EVM](#) [AH8502-FDC-EVM](#) [AH3366Q-SA-EVM](#) [AH3774-P-EVM](#) [KTH1601SU-ST3](#) [MG910](#) [MG910M](#) [MG911](#) [MG610](#) [MW921](#) [MW922](#) [TLE4998S3XALA1](#) [TLE5011FUMA1](#)