

DESCRIPTION

The AP3015 is a Pulse Frequency Modulation (PFM) DC/DC converter. The device is functionally equivalent except for the switching current limit. The AP3015 is designed for higher power systems with 350mA current limit.

The AP3015 features a wide input voltage. The operation voltage ranges from 1.2V to 12V. A current-limited, fixed off-time control scheme conserves operating current, resulting in high efficiency over a broad range of load current. It also

features low quiescent current, switching current limiting, low temperature coefficient, etc.

Fewer tiny external components are required in the applications to save space and lower cost. Furthermore, to ease its use in different systems, a disable terminal is designed to turn on or turn off the chip.

The AP3015 is available in the standard SOT-23-5 package.

FEATURES

- Low Quiescent Current
 - In Active Mode: 17 μ A Typical
 - In Shutdown Mode: <1 μ A
- Low Operating V_{IN}
 - 1.2V Typical for AP3015
- Low V_{CESAT} Switch
 - 200mV Typical at 300mA for AP3015
- High Output Voltage: up to 34V
- Fixed Off-Time Control
- Switching Current Limiting
 - 350mA Typical for AP3015
- Operating Temperature Range: -40°C to +85°C

APPLICATIONS

- MP3, MP4
- Battery power supply systems
- LCD/OLED bias supplies
- Handheld devices
- Portable communication devices

RECOMMENDED OPERATING CONDITIONS

Symbol	Parameter	Min	Max	Unit
V _{IN}	Input Voltage	1.2	12	V
T _{OP}	Operating Temperature	-40	85	°C

ABSOLUTE MAXIMUM RATINGS

Symbol	Parameter	Rating	Unit
V _{IN}	Input Voltage	15	V
—	SW Voltage	38	V
—	FB Voltage	V _{IN}	V
—	SHDN Voltage	15	V
θ _{JA}	Thermal Resistance (Junction to Ambient, no Heat Sink)	265	°C/W
—	Operating Junction Temperature	150	°C
T _{STG}	Storage Temperature Range	-65 to 150	°C
T _{LEAD}	Lead Temperature (Soldering, 10sec)	260	°C
—	ESD (Human Body Model)	3000	V

EVALUATION BOARD

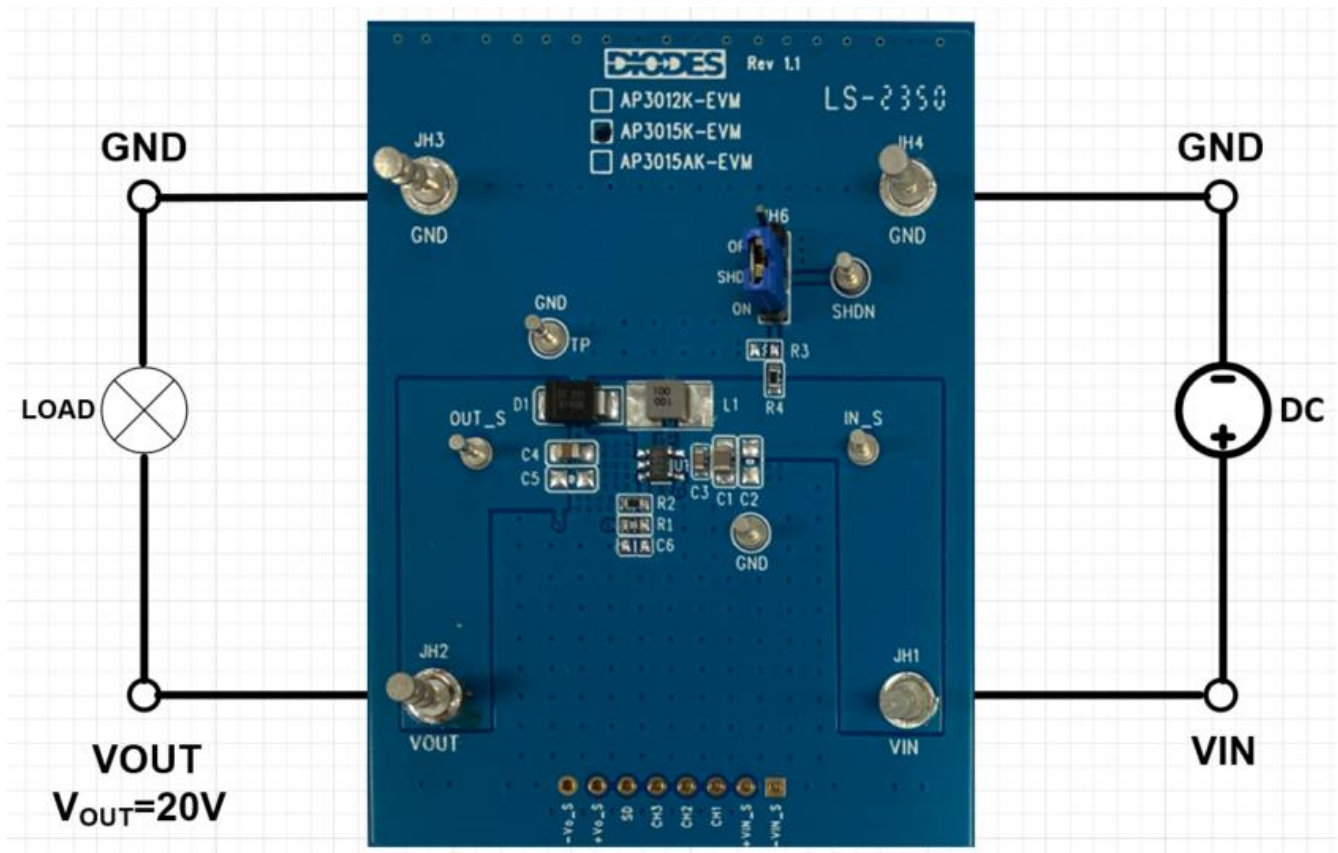


Figure 1. AP3015K-EVM

QUICK START GUIDE

The AP3015K-EVM has a simple layout and allows access to the appropriate signals through test points. To evaluate the performance of the AP3015KTR, follow the procedure below:

1. Connect a power supply to the input terminals VIN and GND. Set VIN to 4.2V.
2. Connect the positive terminal of the electronic load to VOUT and negative terminal to GND.
3. For Enable, to enable IC, place a jumper at JH6 to "ON" position to connect EN pin to VIN through 100KΩ resistor. Jump to "OFF" position to disable IC.
4. The evaluation board should now power up with a 20V output voltage.
5. Check for the proper output voltage of 20V at the output terminals VOUT and GND. Measurement can also be done with a multimeter with the positive and negative leads between VOUT_S and GND.
6. Set the load to 30mA through the electronic load. Check for the stable operation of the SW signal on the oscilloscope. Measure the switching frequency.

MEASUREMENT/PERFORMANCE GUIDELINES

- 1) When measuring the output voltage ripple, maintain the shortest possible ground lengths on the oscilloscope probe. Long ground leads can erroneously inject high frequency noise into the measured ripple.
- 2) For efficiency measurements, connect an ammeter in series with the input supply to measure the input current. Connect an electronic load to the output for output current.

EVALUATION BOARD SCHEMATIC

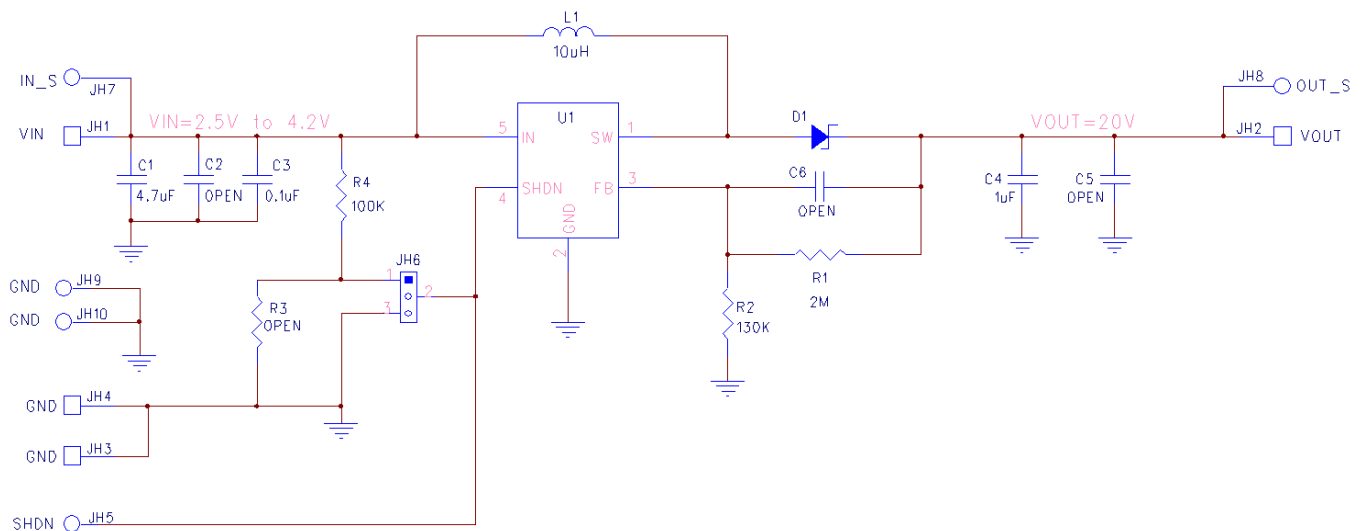
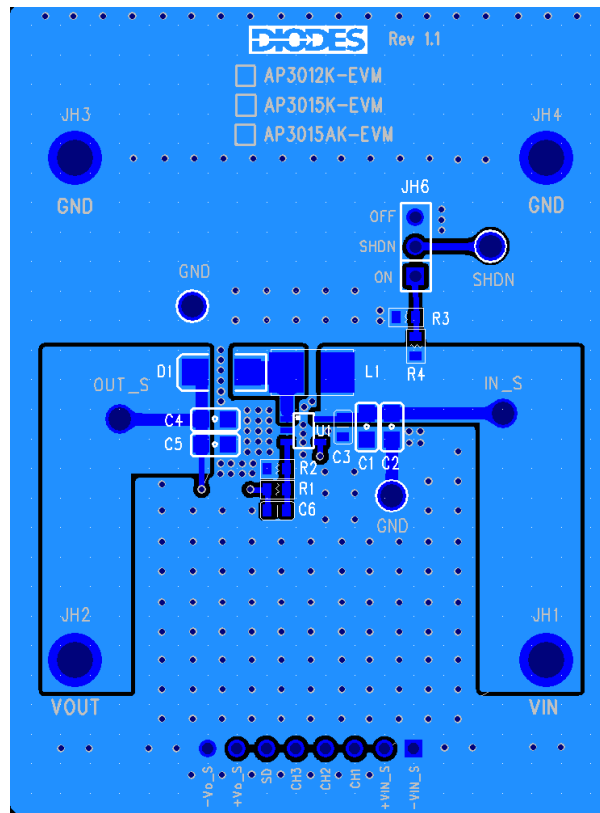
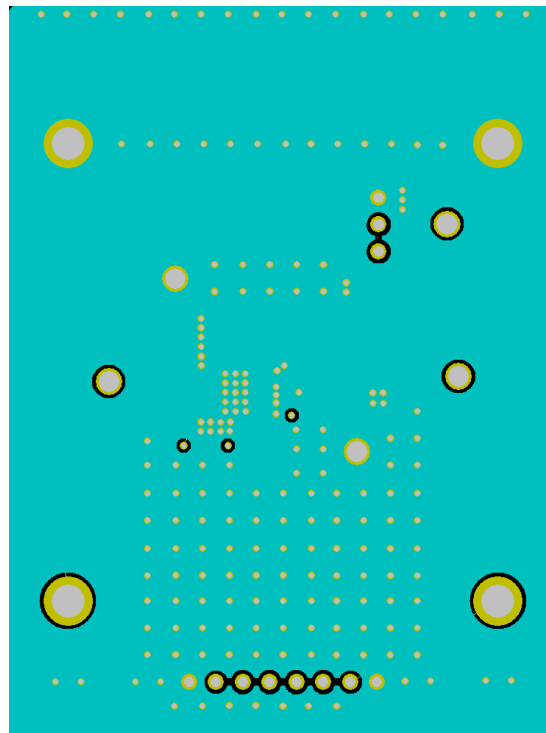


Figure 2. AP3015K-EVM Schematic

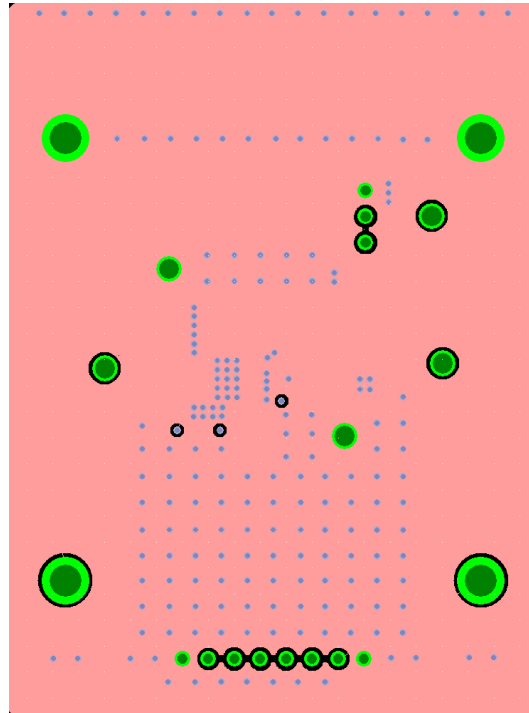
TOP LAYOUT



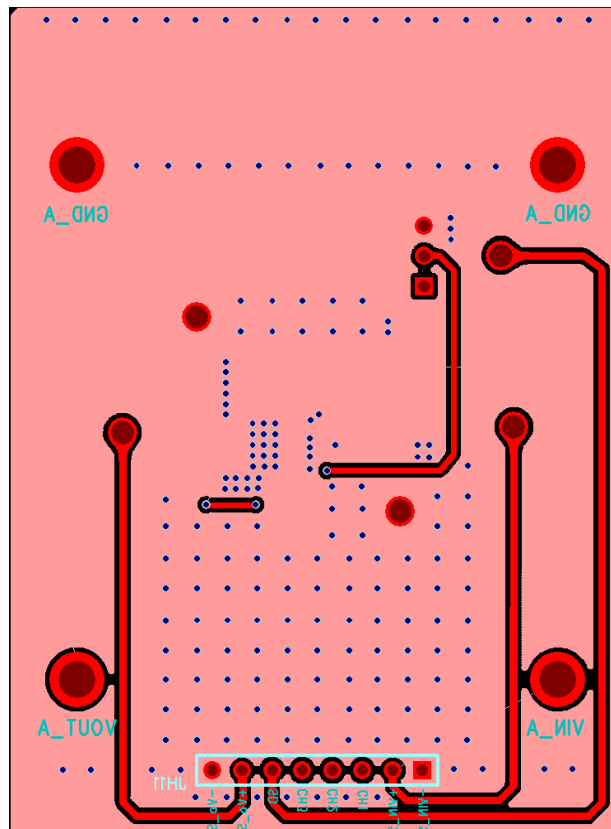
INNER LAYER 2 LAYOUT



INNER LAYER 3 LAYOUT



BOTTOM LAYOUT



BILL OF MATERIALS for AP3015K EVM

Ref	Value	Description	Qty	Size	Vendor Name	Manufacturer PN
C1	4.7 μ F	Ceramic Capacitor, 25V, X7R, 10%	1	0805	Murata	GRM21BZ71E475KE15L
C3	0.1 μ F	Ceramic Capacitor, 25V, X7R, 10%	1	0603	Murata	GCJ188R71E104KA12D
C4	1 μ F	Ceramic Capacitor, 35V, X7R, 10%	1	0805	Murata	GCM21BR7YA105KA55L
R4	100K Ω	RES SMD 1%, 1/10W	1	0603	Panasonic	ERJ-3EKF1003V
R1	2M Ω	RES SMD 1%, 1/10W	1	0603	Panasonic	ERJ-3EKF2004V
R2	130K Ω	RES SMD 1%, 1/10W	1	0603	Panasonic	ERJ-3EKF1303V
L1	10 μ H	DCR=322m Ω , Ir=1.65A	1	3.0x3.0x2.0mm	Würth Electronics	74438336100
D1		Diode Schottky 40V, 1A	1	SMB	Diodes Inc	B140B-13-F
JH6		PCB Header, 40 POS	1	1X3	Würth Electronics	61304011121
IN_S, OUT_S, SHDN, GNDx2	1573	Terminal Turret 0.082" L (Test Points)	5	Through-Hole	Keystone Electronics	1573-2
JH1, JH2, JH3, JH4	1598	Terminal Turret Triple 0.094" L (Test Points)	4	Through-Hole	Keystone Electronics	1598-2
U1	AP3015	Sync DC/DC Converter	1	SOT-23-5	Diodes Inc	AP3015KTR

TYPICAL PERFORMANCE CHARACTERISTICS

Fig 3. Efficiency vs Output Current

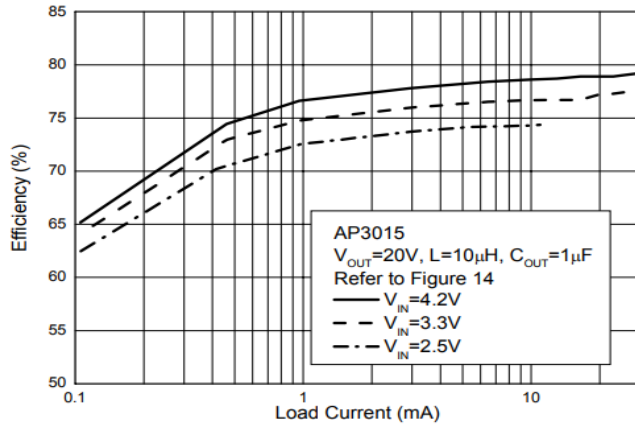


Fig 4. Switch Current Limit vs Junction Temp

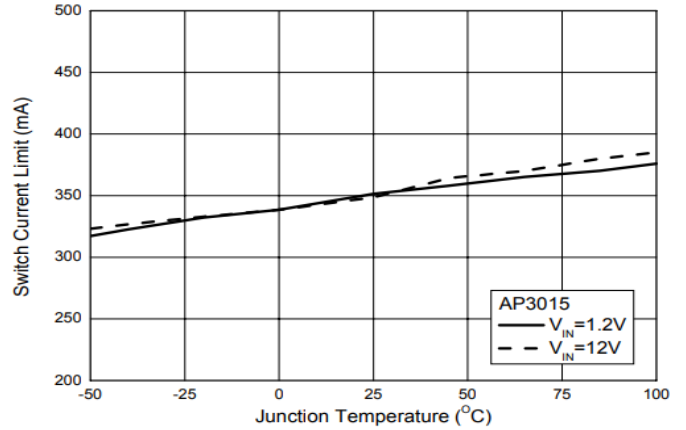


Fig 5. Quiescent Current vs Junction Temp

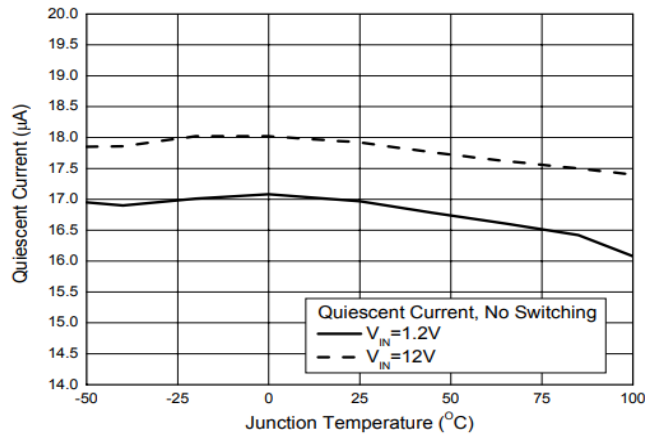
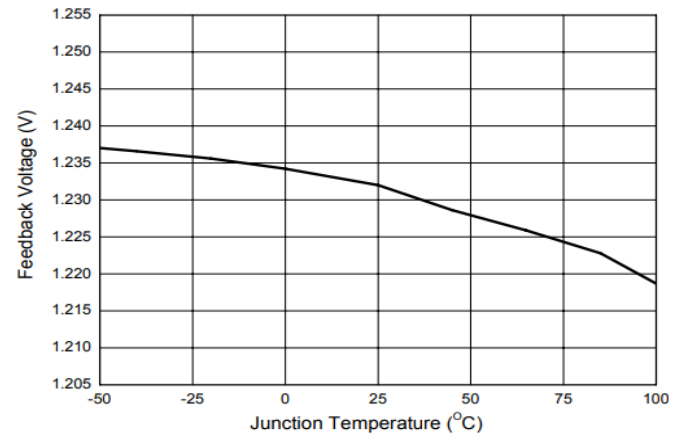


Fig 6. Feedback Voltage vs Junction Temp



IMPORTANT NOTICE

1. DIODES INCORPORATED (Diodes) AND ITS SUBSIDIARIES MAKE NO WARRANTY OF ANY KIND, EXPRESS OR IMPLIED, WITH REGARDS TO ANY INFORMATION CONTAINED IN THIS DOCUMENT, INCLUDING, BUT NOT LIMITED TO, THE IMPLIED WARRANTIES OF MERCHANTABILITY, FITNESS FOR A PARTICULAR PURPOSE OR NON-INFRINGEMENT OF THIRD PARTY INTELLECTUAL PROPERTY RIGHTS (AND THEIR EQUIVALENTS UNDER THE LAWS OF ANY JURISDICTION).
2. The Information contained herein is for informational purpose only and is provided only to illustrate the operation of Diodes' products described herein and application examples. Diodes does not assume any liability arising out of the application or use of this document or any product described herein. This document is intended for skilled and technically trained engineering customers and users who design with Diodes' products. Diodes' products may be used to facilitate safety-related applications; however, in all instances customers and users are responsible for (a) selecting the appropriate Diodes products for their applications, (b) evaluating the suitability of Diodes' products for their intended applications, (c) ensuring their applications, which incorporate Diodes' products, comply the applicable legal and regulatory requirements as well as safety and functional-safety related standards, and (d) ensuring they design with appropriate safeguards (including testing, validation, quality control techniques, redundancy, malfunction prevention, and appropriate treatment for aging degradation) to minimize the risks associated with their applications.
3. Diodes assumes no liability for any application-related information, support, assistance or feedback that may be provided by Diodes from time to time. Any customer or user of this document or products described herein will assume all risks and liabilities associated with such use, and will hold Diodes and all companies whose products are represented herein or on Diodes' websites, harmless against all damages and liabilities.
4. Products described herein may be covered by one or more United States, international or foreign patents and pending patent applications. Product names and markings noted herein may also be covered by one or more United States, international or foreign trademarks and trademark applications. Diodes does not convey any license under any of its intellectual property rights or the rights of any third parties (including third parties whose products and services may be described in this document or on Diodes' website) under this document.
5. Diodes' products are provided subject to Diodes' Standard Terms and Conditions of Sale (<https://www.diodes.com/about/company/terms-and-conditions/terms-and-conditions-of-sales/>) or other applicable terms. This document does not alter or expand the applicable warranties provided by Diodes. Diodes does not warrant or accept any liability whatsoever in respect of any products purchased through unauthorized sales channel.
6. Diodes' products and technology may not be used for or incorporated into any products or systems whose manufacture, use or sale is prohibited under any applicable laws and regulations. Should customers or users use Diodes' products in contravention of any applicable laws or regulations, or for any unintended or unauthorized application, customers and users will (a) be solely responsible for any damages, losses or penalties arising in connection therewith or as a result thereof, and (b) indemnify and hold Diodes and its representatives and agents harmless against any and all claims, damages, expenses, and attorney fees arising out of, directly or indirectly, any claim relating to any noncompliance with the applicable laws and regulations, as well as any unintended or unauthorized application.
7. While efforts have been made to ensure the information contained in this document is accurate, complete and current, it may contain technical inaccuracies, omissions and typographical errors. Diodes does not warrant that information contained in this document is error-free and Diodes is under no obligation to update or otherwise correct this information. Notwithstanding the foregoing, Diodes reserves the right to make modifications, enhancements, improvements, corrections or other changes without further notice to this document and any product described herein. This document is written in English but may be translated into multiple languages for reference. Only the English version of this document is the final and determinative format released by Diodes.
8. Any unauthorized copying, modification, distribution, transmission, display or other use of this document (or any portion hereof) is prohibited. Diodes assumes no responsibility for any losses incurred by the customers or users or any third parties arising from any such unauthorized use.
9. This Notice may be periodically updated with the most recent version available at <https://www.diodes.com/about/company/terms-and-conditions/important-notice>

The Diodes logo is a registered trademark of Diodes Incorporated in the United States and other countries.
All other trademarks are the property of their respective owners.
© 2024 Diodes Incorporated. All Rights Reserved.

www.diodes.com

X-ON Electronics

Largest Supplier of Electrical and Electronic Components

Click to view similar products for [Power Management IC Development Tools](#) *category:*

Click to view products by [Diodes Incorporated](#) *manufacturer:*

Other Similar products are found below :

[EVB-EP5348UI](#) [BQ25010EVM](#) [ISL80019AEVAL1Z](#) [ISLUSBI2CKIT1Z](#) [ISL8002AEVAL1Z](#) [ISL91108IIA-EVZ](#) [ISL28022EVKIT1Z](#)
[STEVAL-ISA008V1](#) [DRI0043](#) [NCP10671B05GEVB](#) [EVB-EN6337QA](#) [SAMPLEBOXILD8150TOBO1](#) [AP61100Z6-EVM](#) [AP62300WU-](#)
[EVM](#) [KITA2GTC387MOTORCTRTOBO1](#) [AEK-MOT-TK200G1](#) [EVLONE65W](#) [STEVAL-ILH006V1](#) [STEVAL-IPE008V2](#) [STEVAL-](#)
[IPP001V2](#) [STEVAL-ISA013V1](#) [STEVAL-ISA067V1](#) [STEVAL-ISQ002V1](#) [TPS2306EVM-001](#) [TPS2330EVM-185](#) [TPS40001EVM-001](#)
[SECO-HVDCDC1362-15W-GEVB](#) [BTS7030-2EPA](#) [LTC3308AIV#WTRPBF](#) [TLT807B0EPV](#) [BTS71033-6ESA](#) [EV13N91A](#) [EV55W64A](#)
[Si8285_86v2-KIT](#) [NCP-NCV51752D2PAK3LGEVB](#) [ISL81807EVAL1Z](#) [EVALM7HVIGBTPFCINV4TOBO1](#) [903-0300-000](#) [903-0301-000](#)
[ROA1286023/1](#) [REFSHA35IMD111TSYSTOBO1](#) [150037482](#) [SABMB629](#) [TDINV3000W50B-KIT](#) [NCP1681CCM1KWGEVB](#) [I7C08A-](#)
[CC3-EVK-P2](#) [I7C12A-CC3-EVK-P2](#) [i7C20A-CC3-EVK-P2](#) [RTK9754L27S01000BE](#) [APEK89303KET-01-T](#)