



DIO2581

One-Channel, 11MHz, 6th-Order Standard Definition Video Filter

Features

- One-ch 6th-order 11MHz SD filters
- 6dB Output Driver Gain and Drive Dual Video Load
- Transparent Input Clamping
- AC or DC Coupled Inputs
- AC or DC Coupled Outputs
- Operates from 3.135 to 5.5V Single Power Supply
- Low Power (8mA/Channel)
- RoHS or Green
- SOT-23-6 Package
- 8kV ESD protection

Applications

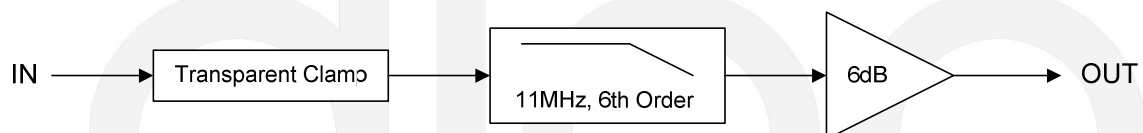
- DVD Players
- Video Amplifiers
- Cable set-top boxes
- Personal Video Recorders
- Communications Devices
- Video on Demand

Descriptions

DIO2581 is a low voltage, one channel video amplifier with integrated reconstruction filter and input clamps. DIO2581 provides improved image quality compared with passive LC filters and discrete drivers solution, especially suited for standard definition video signals, such as television and set-top box applications.

DIO2581 can be directly driven by a DC-coupled DAC output or an AC-coupled signal. Internal diode-like clamps and bias circuitry may be used if AC-coupled inputs are required. The output in DIO2581 can also drive AC or DC coupled single (150Ω) or dual (75Ω) loads. The DC coupling capacitors can be removed.

Block Diagram

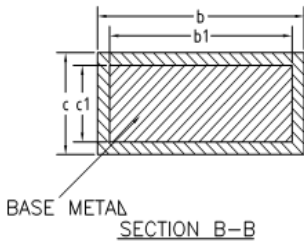
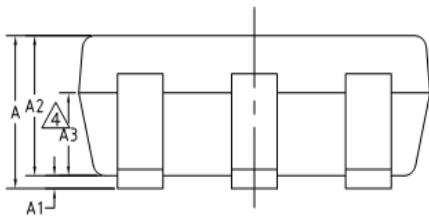
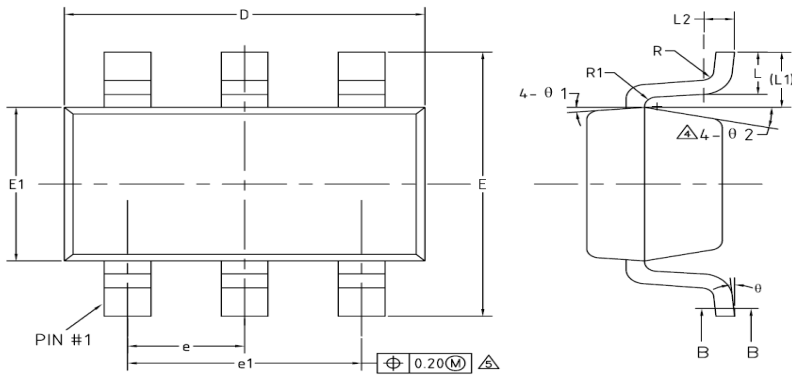


Ordering Information

Order Part Number	Top Marking		T _A	Package	
DIO2581ST6	YW(X)Z	RoHS or Green	-40 to +85°C	SOT-23-6	Tape & Reel, 3000

DIO2581

Physical Dimensions: SOT-23-6



COMMON DIMENSIONS (UNITS OF MEASURE=MILLIMETER)			
Symbol	MIN	NOM	MAX
A	-	-	1.25
A1	0	-	0.15
A2	1.00	1.10	1.20
A3	0.60	0.65	0.70
b	0.36	-	0.50
b1	0.36	0.38	0.45
c	0.14	-	0.20
c1	0.14	0.15	0.16
D	2.826	2.926	3.026
E	2.60	2.80	3.00
E1	1.526	1.626	1.726
e	0.90	0.95	1.00
e1	1.80	1.90	2.00
L	0.35	0.45	0.60
L1	0.59REF		
L2	0.25BSC		
R	0.10	-	-
R1	0.10	-	0.25
θ	0°	-	8°
θ1	3°	5°	7°
θ2	6°	-	14°

One-Channel, 11MHz, 6th-Order Standard Definition Video Filter

CONTACT US

Dioo is a professional design and sales corporation for high-quality and performance analog semiconductors. The company focuses on industry markets, such as, cell phone, handheld products, laptop, and medical equipments and so on. Dioo's product families include analog signal processing and amplifying, LED drivers and charger IC. Go to <http://www.dioo.com> for a complete list of Dioo product families.

For additional product information, or full datasheet, please contact with our Sales Department or Representatives.



X-ON Electronics

Largest Supplier of Electrical and Electronic Components

Click to view similar products for [Video Amplifiers](#) category:

Click to view products by [Dioo](#) manufacturer:

Other Similar products are found below :

[DIO2764CT14](#) [LT1193CN8](#) [NJW1351RB1-TE1](#) [TSH345IDT](#) [MAX452ESA+](#)
[TAT8858A1H](#) [CGB7011-SC-0G00](#) [MAX9583AZT+T](#) [MAX4310EUA+](#) [MAX4312ESE+](#)
[NJM592D8](#) [LT6552IDD#PBF](#) [LT1193CS8#PBF](#) [LT1193CS8#TRPBF](#) [LT1252CN8#PBF](#)
[LT1253CS8#PBF](#) [HFA1135IBZ](#) [LT6552CS8#PBF](#) [LT6559CUD#PBF](#) [LT1256CN#PBF](#)
[LT1194CS8#PBF](#) [LT1252CS8#PBF](#) [AD8372ACPZ-R7](#) [LT1193CN8#PBF](#)
[LT6553CGN#PBF](#) [LT1675CGN#PBF](#) [LT6552IS8#PBF](#) [MAX454CPD+](#)
[AD8145WYCPZ-R7](#) [LT1254CS#PBF](#) [ISL59110IEZ-T7](#) [MAX453CSA+](#) [LT1256CS#PBF](#)
[LT6550IMS#PBF](#) [ISL4089IBZ-T7](#) [LT1251CS#PBF](#) [LT6551CMS#PBF](#) [MAX453CPA+](#)
[NJM2561F1-TE1](#) [ADA4856-3YCPZ-R7](#) [LT6550CMS#PBF](#) [LT6553IGN#PBF](#)
[LT1254CN#PBF](#) [LT6557IGN#PBF](#) [LT1253CN8#PBF](#) [LT1675CMS8-1#PBF](#)
[HMC3587LP3BETR](#) [HMC453QS16GETR](#) [NJM2267D](#) [LM324AM](#)