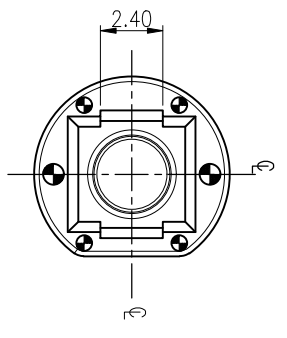
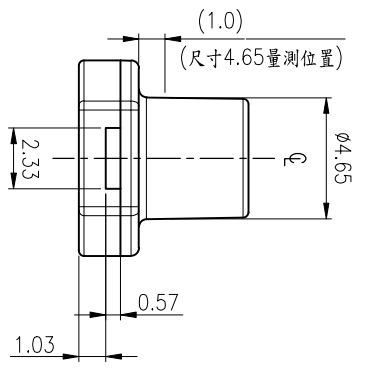
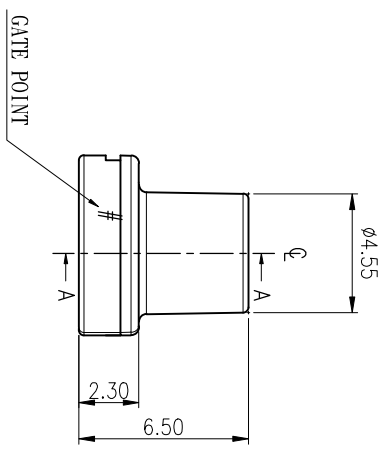
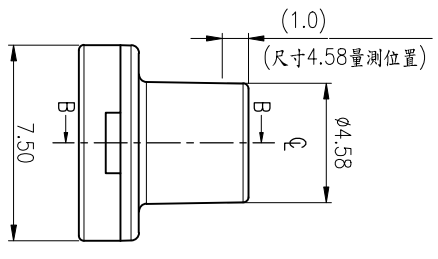
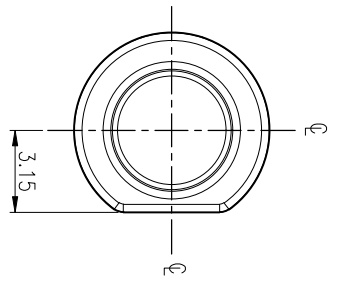
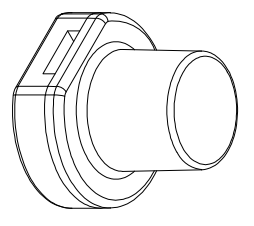
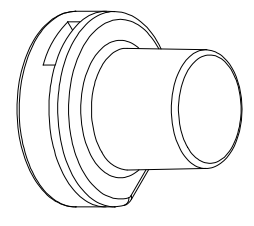


1 2 3 4 5 6 7 8 9 10

本公司智慧財產，未經同意不得複製  
 Diptronics copyright,  
 may not be used without permission from Diptronics.

NOTE:  
 1. 未標註公差之尺寸為±0.20mm以內。  
 2. 建議帽蓋在開關過爐完成后再卡上



APPD:		Q'TV:		PART NAME:	
EIND:		SCALE:		CAP	
5:1					
PAGGY		REV: A		PART NO:	
LARRY				KTL-7R11	
		UNITS:		MKT L:	
		mm		PES E1010	
				DIPTRONICS MANUFACTURING INC.	
				RD5PL7-6	
DMG REL.		DATE		DMG NO:	
DESCRIPTION		APPD.			
ZONE					
REV					



# E1010

File Number: E41871



**COMPANY**

BASF SE  
 Performance Materials Europe  
 E-PME/NQ - H201  
 Ludwigshafen, 67056 Germany

**MODEL INFO**

Ultrason: E1010  
 Polyethersulfone (PESU), furnished as pellets

FLAMMABILITY PROPERTIES	VALUE	TEST METHOD
Flammability		ANSI/UL 94
1.5 mm, Color: ALL	V-1	
3.0 mm, Color: ALL	V-0	

ISO/IEC FLAMMABILITY PROPERTIES	VALUE	TEST METHOD
Flammability		IEC 60695-11-10
1.5 mm, Color: ALL	V-1	
3.0 mm, Color: ALL	V-0	

ELECTRICAL PROPERTIES	VALUE	TEST METHOD
Hot-wire Ignition (HWI)		UL 746A
1.5 mm	3 PLC	
3.0 mm	2 PLC	
High Amp Arc Ignition (HAI)		UL 746A

**Cookies on UL**  
 We use cookies to personalize content and ads, to improve our site, and to analyze our traffic. We also share information about your use of our site with our social media, advertising and analytics partners. [Learn More](#)

1.5 mm	2 PLC	
3.0 mm	1 PLC	
Comparative Tracking Index (CTI)	4 PLC	
Dielectric Strength	28 kV/mm	ASTM D149

[Cookie Settings](#)

Accept

High Voltage Arc Tracking Rate (HVTR)	2 PLC	
Volume Resistivity	1.0E+16 ohms-cm	ASTM D257/IEC 60093
High Voltage, Low Current Arc Resistance	6 PLC	

THERMAL PROPERTIES	VALUE	TEST METHOD
Relative Thermal Index - Electrical Strength		UL 746B
1.5 mm	180 °C	
3.0 mm	180 °C	
Relative Thermal Index - Mechanical Impact		UL 746B
1.5 mm	180 °C	
3.0 mm	180 °C	
Relative Thermal Index - Mechanical Strength		UL 746B
1.5 mm	190 °C	
3.0 mm	190 °C	

PHYSICAL PROPERTIES	VALUE	TEST METHOD
Dimensional Stability	0.0 %	ASTM D1042/ISO 2796

Report Date: 2008-02-22  
Revision Date: 2009-10-09

The appearance of a company's name or product in this database does not in itself assure that products so identified have been manufactured under UL's Follow-Up Service. Only those products bearing the UL Mark should be considered to be Certified and covered under UL's Follow-Up Service. Always look for the Mark on the product.

UL permits the reproduction of the material contained in the Online Certification Directory subject to the following conditions: 1. The Guide Information, Assemblies, Constructions, Designs, Systems, and/or Certifications (files) must be presented in their entirety and in a non-misleading manner, without any manipulation of the data (or drawings). 2. The statement "Reprinted from the Online Certifications Directory with permission from UL" must appear adjacent to the extracted material. In addition, the reprinted material must include a copyright notice in the following format: "© 2020 UL LLC"

## Cookies on UL

We use cookies to personalize content and ads, to provide social media features and to analyze our traffic. We also share information about your use of our site with our social media, advertising and analytics partners. [Learn More](#)

› [Cookie Settings](#)

✓ Accept

## X-ON Electronics

Largest Supplier of Electrical and Electronic Components

*Click to view similar products for [Switch Bezels / Switch Caps](#) category:*

*Click to view products by [Diptronics](#) manufacturer:*

Other Similar products are found below :

[896809000](#) [LW2A-B1-G](#) [7527](#) [76](#) [760203000](#) [760503000](#) [766601000](#) [785105000](#) [785106000](#) [79211759](#) [MG12KB](#) [MH11](#) [MHU31](#)  
[800C2BLK](#) [MJ1216](#) [MJ33](#) [MJ612](#) [908-1634](#) [95CAP-011](#) [11-932.7](#) [99-909.5](#) [99-920.8](#) [A0261A](#) [11-931.2](#) [11-936](#) [AKTSC22B](#) [AKTSC61I](#)  
[AT496F](#) [AT496H](#) [161006](#) [1825068-3](#) [187-1872](#) [188-1471](#) [18-920.1](#) [1DFBLK](#) [1DS30](#) [1KBS1116](#) [C159](#) [1TS00](#) [1X02](#) [908-1632](#) [92-](#)  
[450.000](#) [29PN](#) [2C00](#) [2F204](#) [2J3](#) [304-1871](#) [304-1875](#) [SK2AA00410](#) [1631409](#)