

FEATURES

- ※Single In-line Packaging saves PCB space
- ※Available in vertical or right angle models

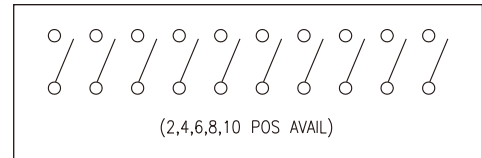
APPLICATION

- ※Industrial control
- ※Computers and peripherals
- ※Variety of function controls

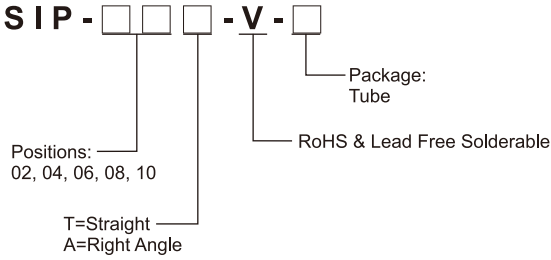
SPECIFICATION

Contact Rating	10mA, 5V DC
Contact Resistance	100mΩ max.
Insulation Resistance	100MΩ min. 500V DC
Dielectric Strength	300V AC/1 minute
Operating Force	800gf max.
Operating Life	500 cycles
Operating Temp.	-30°C ~ +80°C
Storage Temp.	-30°C ~ +80°C

CIRCUIT



HOW TO ORDER

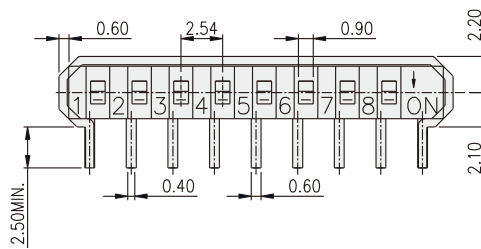


PACKAGE

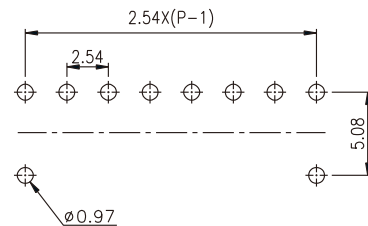
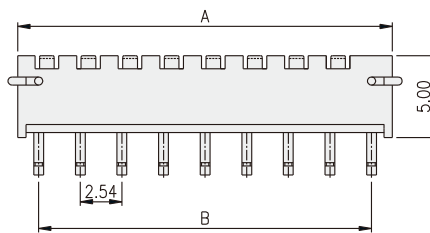
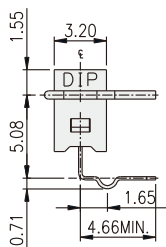
<Tube>

SIP-02A: 56 pcs	SIP-02T: 61 pcs
SIP-04A: 35 pcs	SIP-04T: 37 pcs
SIP-06A: 25 pcs	SIP-06T: 26 pcs
SIP-08A: 20 pcs	SIP-08T: 20 pcs
SIP-10A: 16 pcs	SIP-10T: 17 pcs

SIP-A

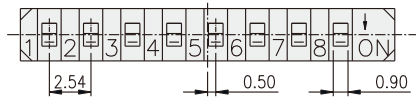


PART NO.	NO.OF POS.	DIM.A	DIM.B
SIP-02	2	7.62	5.08
SIP-04	4	12.70	10.16
SIP-06	6	17.78	15.24
SIP-08	8	22.86	20.32
SIP-10	10	27.94	25.40

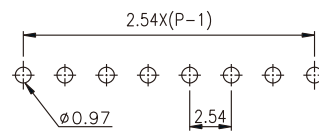
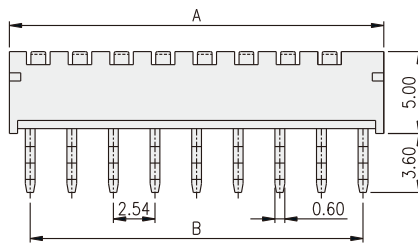
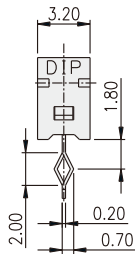


P.C.B. LAYOUT

SIP-T



PART NO.	NO.OF POS.	DIM.A	DIM.B
SIP-02	2	7.62	5.08
SIP-04	4	12.70	10.16
SIP-06	6	17.78	15.24
SIP-08	8	22.86	20.32
SIP-10	10	27.94	25.40



P.C.B. LAYOUT

DIP SWITCH

X-ON Electronics

Largest Supplier of Electrical and Electronic Components

Click to view similar products for [DIP Switches/SIP Switches](#) category:

Click to view products by [Diptronics](#) manufacturer:

Other Similar products are found below :

[78M03S](#) [79B10T](#) [8136-475G4T](#) [G7G-1A2-CB-DC12](#) [H7CZL8AC100240](#) [A7SS-M](#) [A8CA-201](#) [DRR60016](#) [DRS4016](#) [1825008-1](#) [1825444-1](#) [25.350.0653.0](#) [SBS 5004 TG](#) [SDA10H1BDA](#) [97R06ST](#) [A2C-2A5](#) [1825444-7](#) [ADE08SA04](#) [ADE12S04](#) [192960010](#) [2-1825058-8](#) [25.330.0653.1](#) [25.352.0353.0](#) [CXDRIVEV2X](#) [IKN0600000](#) [IKN0800000](#) [LA2-002-DC24](#) [DBS1003](#) [438872000](#) [DRD10CRAE04](#) [DSR02T](#) [DSS 208 N](#) [E2FMX2D1M1TGJ03M](#) [NDI10H](#) [219-9MSTP](#) [204-6ES](#) [EPM02FV](#) [701521596](#) [NDS08V](#) [76SB05](#) [79A10](#) [TD06H0SK1](#) [Z7.255.9027.0](#) [1-1825058-3](#) [1825428-4](#) [219-10LPSTF](#) [E3ZG6111D03M](#) [G4D212PUSTV2DC5](#) [195-7MSTN](#) [NDI05H](#)