

# PRODUCT SPECIFICATION

1.8" TFT LCD Module with SPI Interface  
DT018BTFT, DT018BTFT-SHB

---



Revision 1.1  
15 November 2023

---

Displaytech, a SEACOMP company  
Phone: 1.760.918.6722  
[sales@seacomp.com](mailto:sales@seacomp.com)  
[www.seacomp.com](http://www.seacomp.com)

Contents of this document are subject to change without notice. No part of this document may be reproduced or transmitted in any form or by any means, electronic or physical, for any purpose, without the express written permission of Displaytech.

## Revision History

REV	CHANGE DESCRIPTION	DATE	APPR
1.0	Initial Release	12 JUN 2023	PRW
1.1	Corrected viewing direction (s/b 6:00)	15 NOV 2023	PRW

## Table of Contents

1 Overview	1
1.1 Applications	1
1.2 LCD Features	1
1.3 Acronyms	1
2 Pin Descriptions	2
3 Specifications	3
3.1 Absolute Maximum Ratings	3
3.2 Electrical Characteristics	3
3.2.1 LED Backlight Circuit Diagram	4
4 Timing Characteristics	5
4.1 3-Wire Serial Interface	5
4.2 4-Wire Serial Interface	6
4.3 Reset Timing	7
5 Optical Characteristics	8
5.1 Figures	9
6 Environmental/Reliability Testing	11
6.1 Inspection Criteria	11
7 Precautions for Use of LCD Modules	12
7.1 Safety	12
7.2 Handling	12
7.3 Static electricity	12
7.4 Storage	12
7.5 Cleaning	12
7.6 Cautions for installation and assembly	12
8 Mechanical Drawings	13
8.1 DT018BTFT	13
8.2 DT018BTFT-SHB	14

# 1 Overview

The Displaytech **DT018BTFT** & **DT018BTFT-SHB** are 1.8" color LCD modules, each composed of an active-matrix TFT panel, TFT driver, FPC cable with SPI interface, and adjustable LED backlight. The display area has a RGB pixel resolution of 128 x 160 pixels. The DT018BTFT-SHB, with twice the number of backlight LEDs, is available as a "super high-bright" alternative to the DT018BTFT.

## 1.1 Applications

- Video systems
- Mobile devices
- Wearable devices

## 1.2 LCD Features

- Size 1.8 Inches
- Resolution 128 (RGB) x 160 Pixels
- Type a-Si, Transmissive, Normally white
- Interface(s) 3-Line SPI, 4-Line SPI
- Module Dimensions
  - DT018BTFT 34.00 mm (W) x 43.78 mm (L) x 2.75 mm (H)
  - DT018BTFT-SHB 34.00 mm (W) x 43.78 mm (L) x 2.85 mm (H)
- Active Area 28.03 mm (W) x 35.04 mm (L)
- Pixel Pitch 0.219 mm (W) x 0.219 mm (L)
- Viewing Direction 6:00 O'Clock
- Backlight Type LED, White
- TFT Driver ILI9163

## 1.3 Acronyms

- FPC Flexible Printed Circuit
- LCD Liquid Crystal Display
- LED Light Emitting Diode
- RGB Red-Green-Blue
- SPI Serial-Peripheral Interface
- TFT Thin-Film Transistor

## 2 Pin Descriptions

LCD INTERFACE <sup>1</sup>			
PIN	NAME	TYPE	DESCRIPTION
1	GND	PWR	Ground
2	VDDIO	PWR	Logic supply
3	VDD	PWR	Analog supply
4	$\overline{\text{CS}}$	I	Chip select (active low)
5	$\overline{\text{RST}}$	I	Display reset (active low)
6	SDIO	I/O	Serial in/out
7	GND	PWR	Ground
8	D/CX	I/O	Display data/Command selection
9	SCL	I	Serial clock
10	SPI4W	I	SPI interface selection (Low: 3-line, High: 4-line)
11	GND	PWR	Ground
12	TE	O	Tearing effect (leave floating when not in use) <sup>2</sup>
13	LED-A	PWR	LED backlight, anode
14	LED-K	PWR	LED backlight, cathode
15	LED-K	PWR	LED backlight, cathode

<sup>1</sup> Recommended mating connector: FH12A-15S-0.5SH(55) or equivalent

<sup>2</sup> See ILI9163 datasheet for details

## 3 Specifications

### 3.1 Absolute Maximum Ratings

Operation outside of the maximum ratings listed below may result in permanent damage to the LCD.

ELECTRICAL				
PARAMETER		MIN	MAX	UNIT
Supply Voltage, Analog	$V_{DD}$	-0.3	4.0	V
Supply Voltage, Logic	$V_{DDIO}$	-0.3	3.3	V
Logic Input Voltage	$V_{IN}$	-0.3	$V_{DDIO} + 0.3$	V
Logic Output Voltage	$V_{OUT}$	-0.3	$V_{DDIO} + 0.3$	V
Backlight Current	$I_F$	–	60	mA

ENVIRONMENTAL				
PARAMETER		MIN	MAX	UNIT
Operating Temperature	$T_{OP}$	-20	+70	°C
Storage Temperature	$T_{ST}$	-30	+80	°C

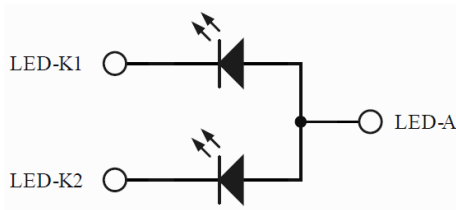
### 3.2 Electrical Characteristics

POWER					
PARAMETER		MIN	TYP	MAX	UNIT
Supply Voltage, Analog	$V_{DD}$	2.5	2.8	4.0	V
Supply Voltage, Logic	$V_{DDIO}$	2.5	2.8	3.3	V
Supply Current	$I_{DD}$	–	5	10	mA

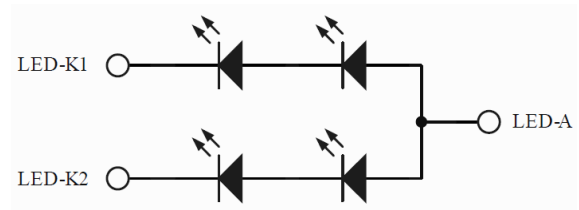
LOGIC					
PARAMETER		MIN	TYP	MAX	UNIT
Input Voltage, High	$V_{IH}$	$0.7 \times V_{DDIO}$	–	$V_{DDIO}$	V
Input Voltage, Low	$V_{IL}$	0	–	$0.3 \times V_{DDIO}$	V
Output Voltage, High	$V_{OH}$	$0.8 \times V_{DDIO}$	–	$V_{DDIO}$	V
Output Voltage, Low	$V_{OL}$	0	–	$0.2 \times V_{DDIO}$	V

LED BACKLIGHT					
PARAMETER		MIN	TYP	MAX	UNIT
Forward Current <sup>3</sup>	$I_F$	–	40	60	mA
Forward Voltage, DT018BTFT	$V_F$	2.8	3.0	3.3	V
Forward Voltage, DT018BTFT-SHB	$V_{F,SHB}$	5.6	6.0	6.6	
LED Lifetime <sup>4</sup>	–	–	30,000	–	Hr

### 3.2.1 LED Backlight Circuit Diagram



**Figure 1: DT018BTFT Backlight**  
1 x 2 = 2 LEDs,  $I_F = 40$  mA



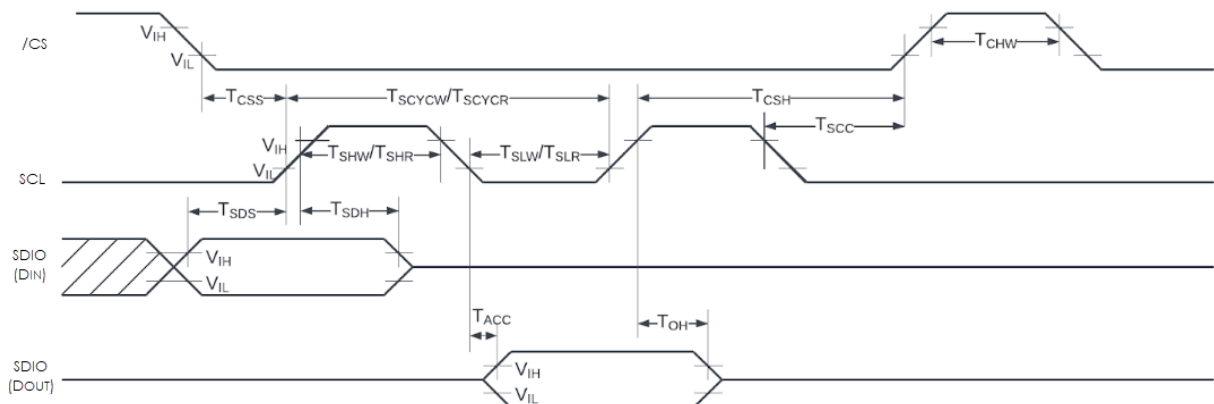
**Figure 2: DT018BTFT-SHB Backlight**  
2 x 2 = 4 LEDs,  $I_F = 40$  mA

<sup>3</sup> Backlight Power Consumption: 140mW

<sup>4</sup> LED lifetime is defined as the amount of time it takes for brightness to decrease to 50% of its original value at  $T_A=25^\circ\text{C}$  and  $I_F=40\text{mA}$ . LED lifetime may decrease if operating current,  $I_F$ , is higher than 40mA.

## 4 Timing Characteristics<sup>5</sup>

### 4.1 3-Wire Serial Interface



**Figure 3:** Timing Diagram, 3-Wire Serial Interface

TIMING CHARACTERISTICS, 3-WIRE SERIAL INTERFACE <sup>6</sup>					
SIGNAL	PARAMETER		MIN	MAX	UNIT
$\overline{CS}$	$T_{CSS}$	Chip select setup time	10	–	nS
	$T_{CSH}$	Chip select hold time	30	–	nS
	$T_{CHW}$	Chip select H pulse width	30	–	nS
SCL	$T_{SCYCW}$	Serial clock cycle, write	66	–	nS
	$T_{SHW}$	S L H pulse width, Write	15	–	nS
	$T_{SLW}$	S L L pulse width, Write	15	–	nS
	$T_{SCYCR}$	Serial clock cycle, Read	150	–	nS
	$T_{SHR}$	S L H pulse width, Read	60	–	nS
	$T_{SLR}$	S L L pulse width, Read	60	–	nS
SDIO	$T_{SDS}$	Data setup time	5	–	nS
	$T_{SDH}$	Data hold time	5	–	nS
	$T_{ACC}$	Access time <sup>7</sup>	5	50	nS
	$T_{OH}$	Output disable time <sup>6</sup>	10	–	nS

<sup>5</sup> Input signal rise & fall times are specified at 15 nS or less.

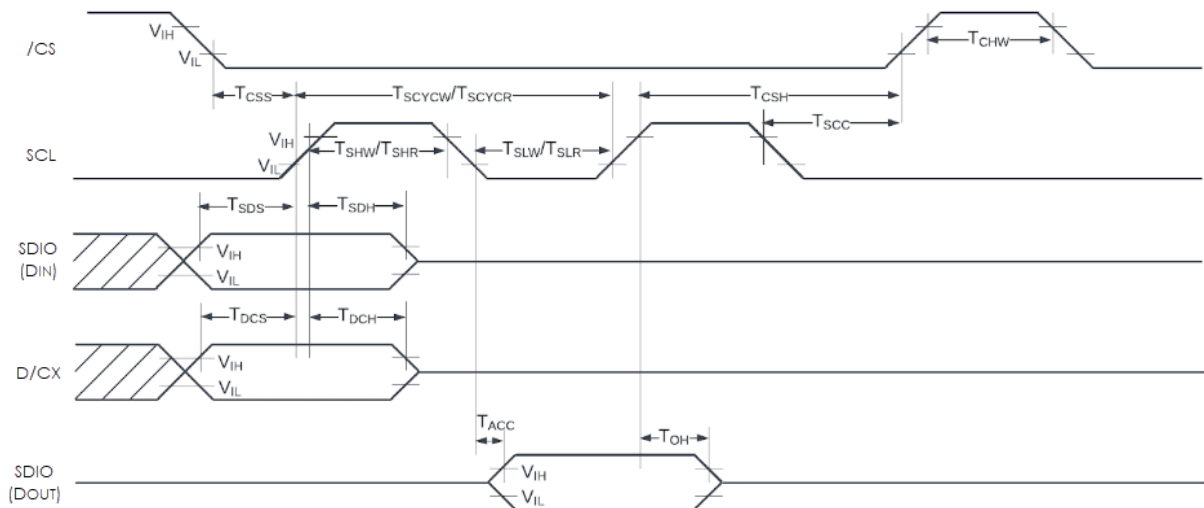
Logic high & low levels are specified as 10% - 90% of  $V_{DDIO}$  for input signals.

<sup>6</sup> GND = 0V,  $V_{DDIO}$  = 1.65V ~ 3.3V,  $V_{DD}$  = 2.6V ~ 3.3V,  $T_A$  = -30°C ~ 70°C

<sup>7</sup> For maximum  $C_L$  = 30pF, Minimum  $C_L$  = 8pF



## 4.2 4-Wire Serial Interface



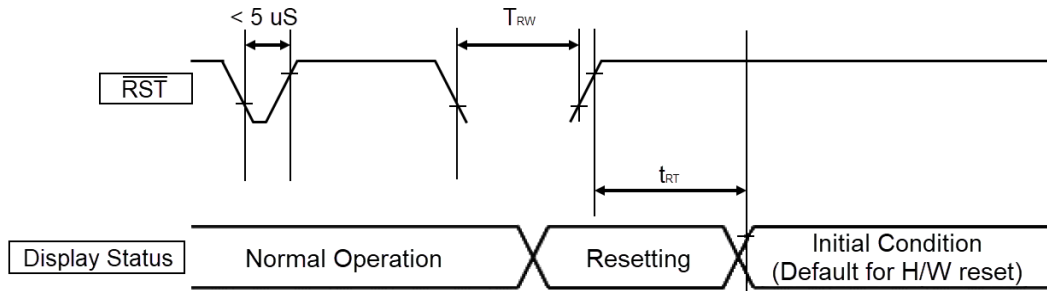
**Figure 4:** Timing Diagram, 4-Wire Serial Interface

TIMING CHARACTERISTICS: 4-WIRE SERIAL INTERFACE <sup>8</sup>					
SIGNAL	PARAMETER	MIN	MAX	UNIT	
$\overline{CS}$	$T_{CSS}$	10	–	nS	
	$T_{CSH}$	30	–	nS	
	$T_{CHW}$	30	–	nS	
SCL	$T_{SCYCW}$	66	–	nS	
	$T_{SHW}$	15	–	nS	
	$T_{SLW}$	15	–	nS	
	$T_{SCYCR}$	150	–	nS	
	$T_{SHR}$	60	–	nS	
	$T_{SLR}$	60	–	nS	
D/CX	$T_{DCS}$	5	–	nS	
	$T_{DCH}$	5	–	nS	
SDIO	$T_{SDS}$	5	–	nS	
	$T_{SDH}$	5	–	nS	
	$T_{ACC}$	5	50	nS	
	$T_{OH}$	10	–	nS	

<sup>8</sup> GND = 0V,  $V_{DDIO}$  = 1.65V ~ 3.3V,  $V_{DD}$  = 2.6V ~ 3.3V,  $T_A$  = -30°C ~ 70°C

<sup>9</sup> For maximum  $C_L$  = 30pF, Minimum  $C_L$  = 8pF

### 4.3 Reset Timing



**Figure 5:** Reset Timing

RESET TIMING CHARACTERISTICS <sup>10</sup>					
PARAMETER		MIN	TYP	MAX	UNIT
Pulse width, Reset low	$t_{RSTWW}$	10	–	–	$\mu\text{S}$
Pulse width, Reset complete					
Sleep In mode	$t_{RST(I)}$	–	–	5	mS
Sleep Out mode	$t_{RST(O)}$	–	–	120	mS

<sup>10</sup> GND = 0V,  $V_{DDIO}$  = 1.65V ~ 1.95V,  $V_{DD}$  = 2.6V ~ 2.9V,  $T_A$  = -30°C ~ 70°C

## 5 Optical Characteristics

OPTICAL CHARACTERISTICS <sup>11</sup>						
PARAMETER		MIN	TYP	MAX	UNIT	
Contrast Ratio <sup>12,13</sup>	CR	200	300	–	–	
Response Time <sup>14</sup>	T <sub>ON</sub> / T <sub>OFF</sub>	–	20	–	mS	
Viewing Angles <sup>15,16</sup>	Θ <sub>T</sub>	35	45	–	°C	
	Θ <sub>B</sub>	10	20	–		
	Θ <sub>L</sub>	35	45	–		
	Θ <sub>R</sub>	35	45	–		
Chromaticity <sup>17</sup>	X <sub>RED</sub>	–	.32	–	–	
	Y <sub>RED</sub>	–	.36	–		
	X <sub>GRN</sub>	–	.63	–		
	Y <sub>GRN</sub>	–	.35	–		
	X <sub>BLU</sub>	–	.33	–		
	Y <sub>BLU</sub>	–	.60	–		
	X <sub>WHT</sub>	–	.11	–		
	Y <sub>WHT</sub>	–	.10	–		
NTSC <sup>5</sup>	–	–	60	–	%	
Luminance <sup>13</sup>	DT018BTFT	L	280	350	–	cd/m <sup>2</sup>
	DT018BTFT-SHB		800	1000	–	
Uniformity <sup>13</sup>	U	80	–	–	%	

<sup>11</sup> See Section 5.1, Figure 3

<sup>12</sup> Viewing Angle (Θ) = 0°

<sup>13</sup> See Section 5.1, Figure 7

<sup>14</sup> See Section 5.1, Figure 4

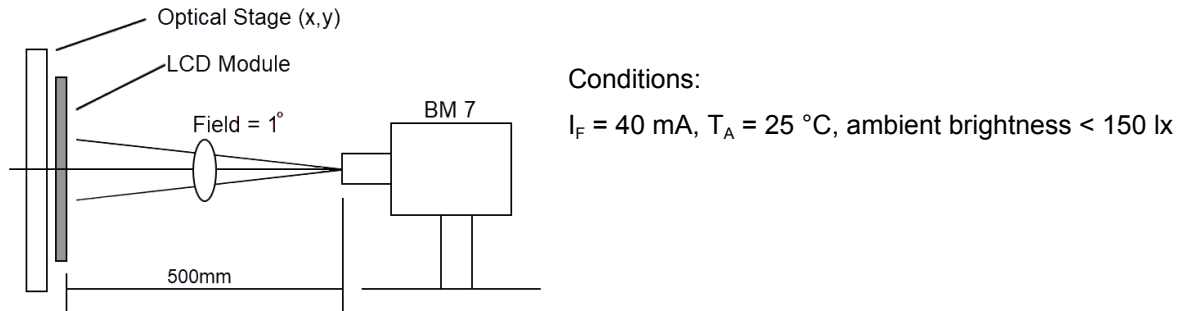
<sup>15</sup> Contrast Ratio (CR) ≥ 10

<sup>16</sup> See Section 5.1, Figure 5

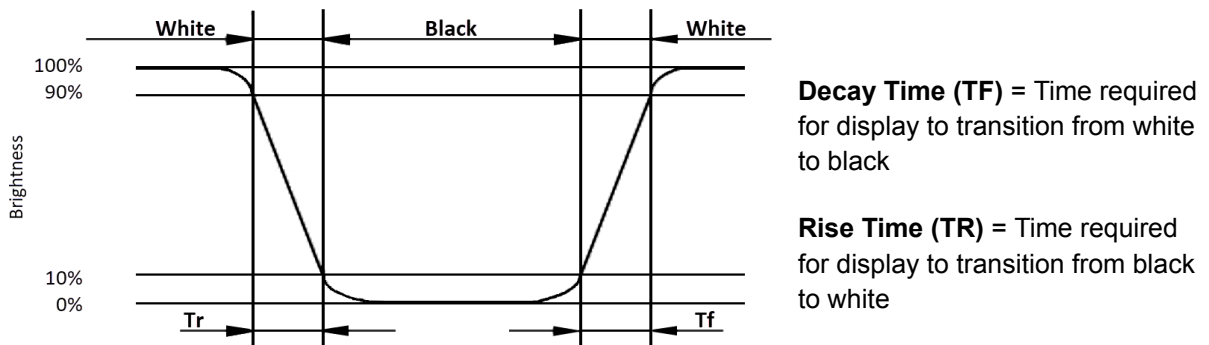
<sup>17</sup> See Section 5.1, Figure 6

## 5.1 Figures

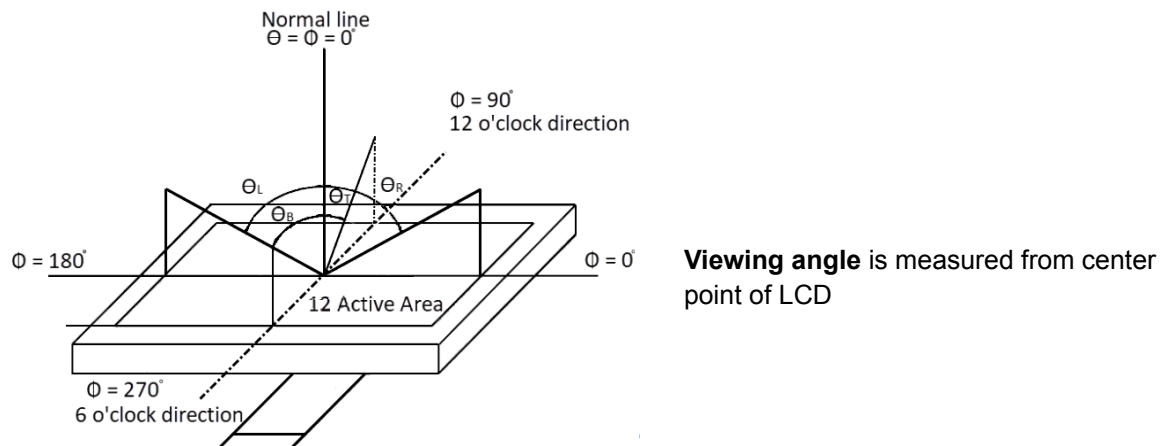
**Figure 3: Optical Measurement System**



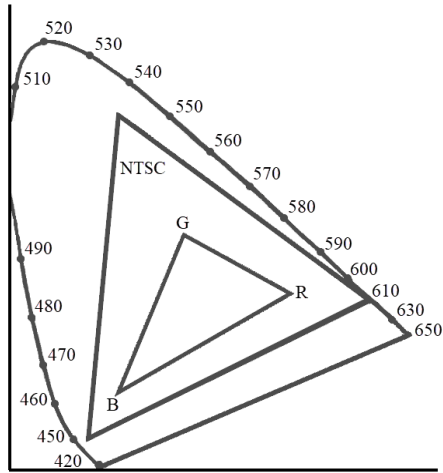
**Figure 4: Response Times**



**Figure 5: Viewing Angles**



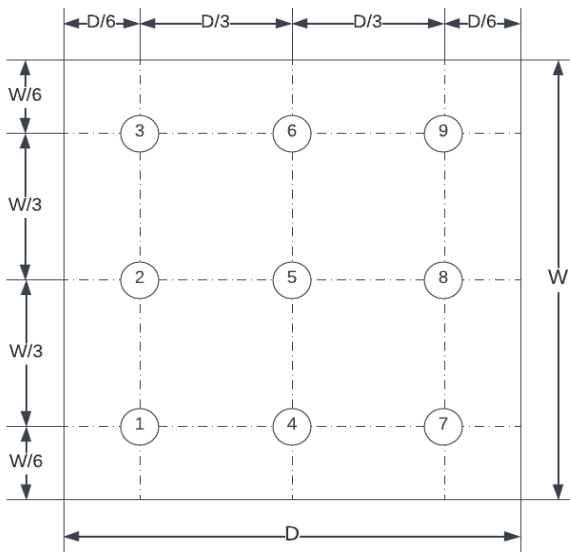
**Figure 6: Chromaticity (CIE 1931)**



**Chromaticity** = Area of  $\Delta_{RGB}$  / Area of  $\Delta_{NTSC}$

\* Color coordinates measured at center point of LCD

**Figure 7: Luminance Uniformity**



**Luminance** is defined as the brightness of all white pixels at the center of the display area at optimum contrast.

**Uniformity** is determined by measuring Luminance at 9 points and calculating  $Luminance_{MIN} / Luminance_{MAX}$

**Contrast Ratio** =  $\frac{Surface\ Luminance_{WhitePixels}}{Surface\ Luminance_{BlackPixels}}$

## 6 Environmental/Reliability Testing

Judgment is based on inspection performed after test, per the Inspection Criteria table.<sup>18</sup>

ITEM UNDER TEST	TEST CONDITION
High Temperature Operation	$T_A = 70^{\circ}\text{C}$ , 120 Hrs
Low Temperature Operation	$T_A = -20^{\circ}\text{C}$ , 120 Hrs
High Temperature Storage	$T_S = 80^{\circ}\text{C}$ , 120 Hrs
Low Temperature Storage	$T_S = -30^{\circ}\text{C}$ , 120 Hrs
High Temperature & Humidity Storage	$T_S = 60^{\circ}\text{C}$ , 120 Hrs, 90% RH
Thermal Shock (Non-Operation)	$-30^{\circ}\text{C}$ (30 min) ~ $80^{\circ}\text{C}$ (30 min) Change time: 5 min, 10 cycles
ESD (Operation)	C = 150pF, R = 330 $\Omega$ , 5 points/panel Air: 8KV (5x), Contact: 4KV (5x)
Vibration (Non-Operation)	Frequency Range: 10Hz ~ 55Hz Stroke: 1.5mm Sweep: 10Hz ~ 55Hz ~ 10Hz 2 Hrs each in X, Y, Z directions
Package Drop Test	Height: 80cm 1 corner, 3 edges, 6 surfaces

### 6.1 Inspection Criteria

INSPECTION ITEM	CRITERIA
Appearance	No cracks present on FPC No cracks present on LCD panel
LCD Panel Alignment	No bubbles present on/in LCD panel No alignment defects in active area
Electrical Current	Within device specifications
Function/Display	No broken circuits nor short circuits present No black lines present on LCD panel No other display defects

<sup>18</sup> Functional test shall be conducted after 4 hours of storage at normal temperature and humidity, after LCD is removed from test chamber.

## 7 Precautions for Use of LCD Modules

### 7.1 Safety

Liquid crystal in LCD is poisonous. Do not put in mouth. If liquid crystal comes in contact with skin or clothes, wash off immediately using soap and water.

### 7.2 Handling

- A. LCD panel is made of plate glass. Do not subject panel to mechanical shock or excessive force on its surface.
- B. In order to ensure reliability, do not hold product by flexible printed circuit (FPC) cable.
- C. Provide space so that panel does not come into contact with other components.
- D. Transparent electrodes may be disconnected if panel is used in an environment where dew condensation is present.
- E. Properties of semiconductor devices may be affected when exposed to light, possibly resulting in integrated circuit (IC) malfunctions. To prevent such malfunctions, design and mounting layout should be done in such a way that IC is not exposed to light during use.

### 7.3 Static electricity

- A. Ground soldering iron tips, tools, and testers while in use.
- B. Ground your body when handling LCD products.
- C. Power on the LCD module before applying the voltage to the input terminals.
- D. Do not apply any voltage that exceeds absolute maximum rating.
- E. Store products in an anti-electrostatic bag or container.

### 7.4 Storage

- A. Store product in a dark place at  $25^{\circ}\text{C} \pm 10^{\circ}\text{C}$  with low humidity (40% RH ~ 60% RH). Do not expose display to sunlight or fluorescent light.
- B. Storage in a clean environment, free from dust, active gas, and solvents.

### 7.5 Cleaning

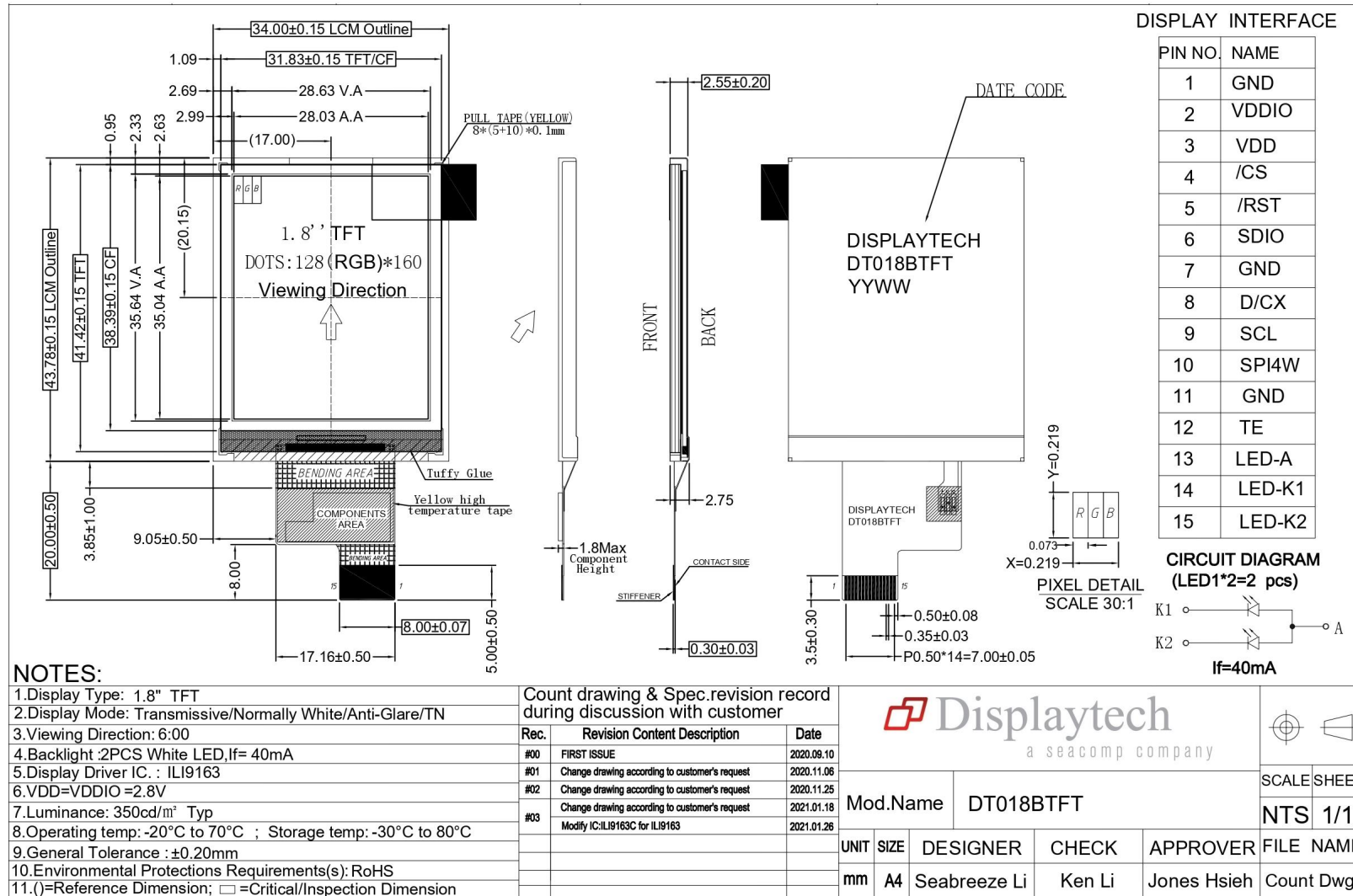
- A. To clean the product, wipe with a soft cloth moistened with ethanol. Do not allow ethanol to get between upper film and bottom glass, as this may cause peeling issues and/or defective operation. Do not use any organic solvent or detergent other than ethanol.

### 7.6 Cautions for installation and assembly

- A. Bezel edge must be positioned between Active area and Viewing area.
- B. For stable display assembly, Displaytech recommends designing a support for the backside of the display.
- C. Do not display any fixed pattern for long periods of time. If a fixed pattern must be displayed, use a screen saver in order to avoid image persistence.

## 8 Mechanical Drawings

### 8.1 DT018BTFT





## 8.2 DT018BTFT-SHB

**DISPLAY INTERFACE**

PIN NO.	NAME
1	GND
2	VDDIO
3	VDD
4	/CS
5	/RST
6	SDIO
7	GND
8	D/CX
9	SCL
10	SPI4W
11	GND
12	TE
13	LED-A
14	LED-K1
15	LED-K2

**CIRCUIT DIAGRAM**

**NOTES:**

- Display Type: 1.8" TFT
- Display Mode: Transmissive/Normally White/Anti-Glare/TN
- Viewing Direction: 6:00
- Backlight : 4PCS White LED(2\*2), If= 40mA
- Display Driver IC. : ILI9163
- VDD=VDDIO =2.8V
- Luminance: 1000cd/m<sup>2</sup> Typ
- Operating temp: -20°C to 70°C ; Storage temp: -30°C to 80°C
- General Tolerance : ±0.20mm
- Environmental Protections Requirements(s): RoHS
- (.)=Reference Dimension; □ =Critical/Inspection Dimension

Count drawing & Spec.revision record during discussion with customer

Rec.	Revision content description	Date
#00	FIRST ISSUE	2020.09.10
#01	Change drawing according to customer's request	2020.11.06
#02	Change drawing according to customer's request	2020.11.25
#03	Change drawing according to customer's request	2021.01.21
	Modify IC PIN from ILI9163C to ILI9163	2021.01.26

Displaytech  
a seacomp company

Mod.Name		DT018BTFT-SHB			SCALE	SHEE
					NTS	1/1
UNIT	SIZE	DESIGNER	CHECK	APPROVER	FILE NAME	
mm	A4	Seabreeze Li	Ken Li	Jones Hsieh	Count Dwg	

## X-ON Electronics

Largest Supplier of Electrical and Electronic Components

*Click to view similar products for [TFT Displays & Accessories](#) category:*

*Click to view products by [Displaytech](#) manufacturer:*

Other Similar products are found below :

[OAI-80038AA-2013-A](#) [HDA430T-3G1H](#) [NB-ATT01](#) [NL8060BC26-35C](#) [TCG104SVLQAPNN-AN20](#) [OAI-80038AA-2008-A](#) [315-U004B15300](#) [EIC-LCD-1080P](#) [NL10276BC20-18C](#) [DEM 128160D](#) [TMH-PW-N](#) [RFE43BU-AIW-DNG](#) [EA WF050-40S](#) [EA WF050-40ST](#) [RFC350X-AWW-DNG](#) [RFS390E-AWW-DNN](#) [DEM 480272G2](#) [VMX-PW-N \(A-TOUCH\)](#) [PH800480T013-ICA](#) [DEM 1024600N](#) [VMX-PW-N \(C-TOUCH\)](#) [DEM 1024600P](#) [VMH-PW-N \(C-TOUCH\)](#) [SM-RVT50HQHNWCA0](#) [DEM 240280A](#) [VMH-PW-N](#) [DEM 170320A](#) [VMH-PW-N](#) [PH240320T068-LAB08](#) [DEM 800480T1](#) [TMH-PW-N](#) [PH128128T041-LAA07](#) [PH480272T005-IAC02](#) [DEM 1024600P](#) [VMH-PW-N \(A-TOUCH\)](#) [DEM 800480T1](#) [TMH-PW-N \(C-TOUCH\)](#) [DEM 800480Q4](#) [VMX-PW-N](#) [DEM 800480T1](#) [TMH-PW-N \(A-TOUCH\)](#) [PH320240T-023-I02Q](#) [PH128800T004-ZZA01](#) [RFE430W-1YW-DBS](#) [DEM 1024600N](#) [VMX-PW-N \(A-TOUCH\)](#) [PH240320T074-ZAA01](#) [DEM 480480D](#) [VMX-PW-N \(C-TOUCH\)](#) [SM-RVT50HQSNNWN00](#) [SM-RVT50HQHNWC00](#) [PH800480T033-ICB01](#) [RFE430W-AWW-DNN](#) [DEM 096096A](#) [VMH-PW-N](#) [RL0F00050000FGAAASA01](#) [PH320480T009-LAA01](#) [SM-RVT50HQSNNWCA0](#) [SM-RVT50HQSNNWC00-B](#) [PH320240T028-ZEA01](#) [RFE430W-1YW-DBN](#) [SM-RVT50HQHNWC00-B](#) [DEM 120240A](#) [VMH-PW-N](#) [DEM 268800A](#) [VMH-PW-N](#)