

## 技术特性/Specifications:

额定电压 Rated voltage: 250V AC, DC  
额定电流 Rated current: 3.5A AC, DC  
接触电阻 Contact resistance: 20m $\Omega$  max  
绝缘电阻 Insulation resistance: 1000M $\Omega$  min  
耐压 Withstand voltage: 1000V AC/minute  
环境温度 Ambient temperature: -40 $^{\circ}$ C~+105 $^{\circ}$ C  
适用线规 Wire range: AWG#28~#20

| REV. | REVISION DESCRIPTION | DATE | APPD |
|------|----------------------|------|------|
|      |                      |      |      |

### NOTES

Available in 02 through 12 Circuits.  
 Mates with DL30004-Y Series Housing.  
 Material : LCP UL94V-0.  
 Pin Material : Brass.Matte-plated .

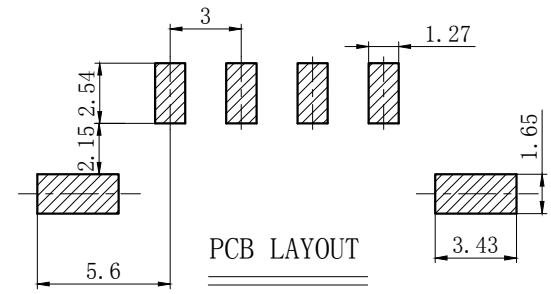
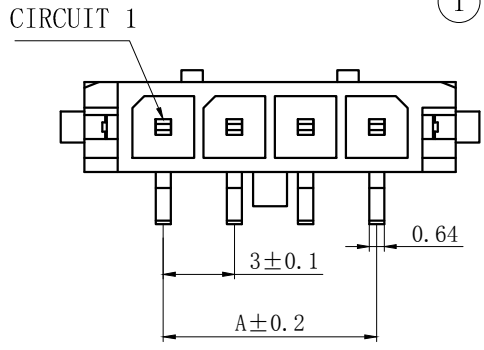
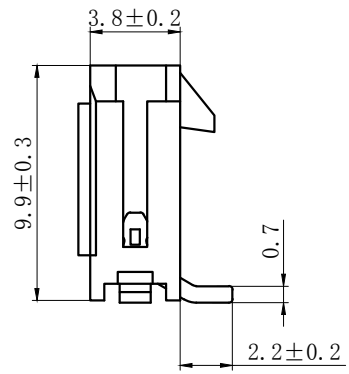
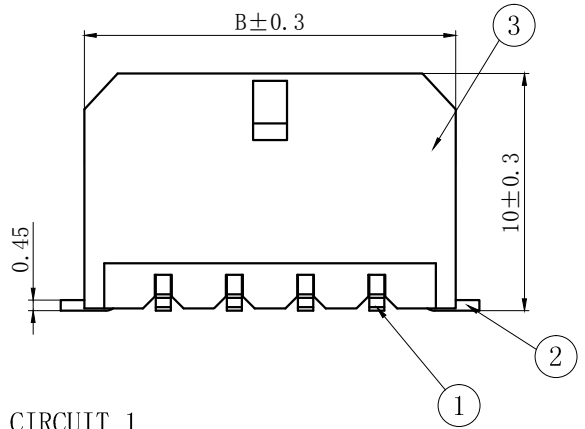
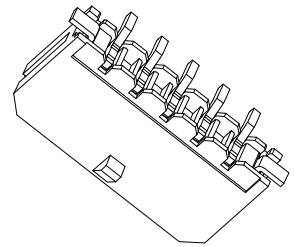
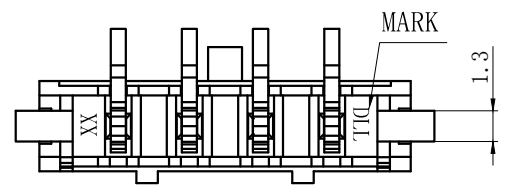
### ORDERING INFORMATION

DL30004 - XX B - X XX - X X - X - XX  
 1 2 3 4 5 6 7 8 9

- PART NO.
- NO. OF CIRCUIT
- CONN. TYPE
- MATERIAL: 0:PA66 V0 1:PA66 V1 2:PA66 V2 3:PA66 V0 750 °C  
 4:LCP 5:PBT 6:PA9T 7:9A6T 8: GF PA66
- COLOR: NA:NATURE RE:RED BR:BROWN  
 GY:GREY BK:BLACK YE:YELLOW  
 BL:BLUE GR:GREEN PU:PURPLE PI:PINK  
 OR:ORANGE TR:TRANSPARENT OT:OTHER
- CONTACT MATERIAL: P:PHOSPHOR BRONZE B:BRASS
- FINISH: T:TIN MT:MATT TIN BG/QG:GOLD S:SILVER
- STYLE: Z:WITHOUT K K:WITH K
- SERIAL NUMBER: 00.01.02.....

|    |    |     |     |    |         |
|----|----|-----|-----|----|---------|
| 3  | ③  | 基座  | LCP | 1  | UL94V-0 |
| 2  | ②  | 焊片  | 黄铜  | 2  | 镀亚光     |
| 1  | ①  | 接触件 | 黄铜  | N* | 镀亚光     |
| 序号 | 图号 | 名称  | 材料  | 数量 | 附件      |

|  |              |                                       |  |   |  |
|--|--------------|---------------------------------------|--|---|--|
| GENERAL TOLERANCES (UNLESS SPECIFIED)    |              | ZHE JIANG DELI CONNECTORS CO.,LTD     |  |   |  |
| .X: ± 0.25                               | X°: ± 3.0°   | PRODUCT NAME:<br>DL30004-AB(43650-AB) |  | TITLE:<br>3.0 mm Pitch<br>Wire To Board SMT Wafer |  |
| .XX: ± 0.15                              | .X°: ± 2.0°  | DR:Yuan Jun Rong                      |  | DATE:20/07/27                                     |  |
| .XXX: ± 0.01                             | .XX°: ± 1.0° | CHKD:Wu Hui                           |  | DATE:20/07/27                                     |  |
| DRAWING NO:<br>GC=DL30001-XXB-XX-XY-X-XX |              | APPD:Ren An De                        |  | DATE:20/07/27                                     |  |
|  |              | SCALE: N/A                            |  | PAGE: 1/1   |  |
|  |              | UNITS: mm                             |  | REV.: A   |  |



| 孔位 poles | TYPE      | A    | B    | 孔位 poles | TYPE       | A    | B    |
|----------|-----------|------|------|----------|------------|------|------|
| —        | —         | —    | —    | 7        | 43650-7AB  | 18.0 | 24.6 |
| 2        | 43650-2AB | 3.0  | 9.6  | 8        | 43650-8AB  | 21.0 | 27.6 |
| 3        | 43650-3AB | 6.0  | 12.6 | 9        | 43650-9AB  | 24.0 | 30.6 |
| 4        | 43650-4AB | 9.0  | 15.6 | 10       | 43650-10AB | 27.0 | 33.6 |
| 5        | 43650-5AB | 12.0 | 18.6 | 11       | 43650-11AB | 30.0 | 36.6 |
| 6        | 43650-6AB | 15.0 | 21.6 | 12       | 43650-12AB | 33.0 | 39.6 |

| REV. | REVISION DESCRIPTION | DATE | APPD |
|------|----------------------|------|------|
|      |                      |      |      |

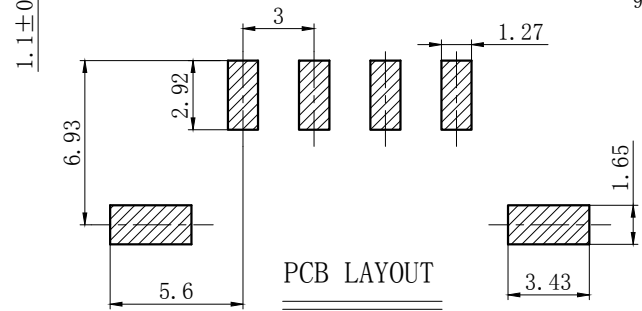
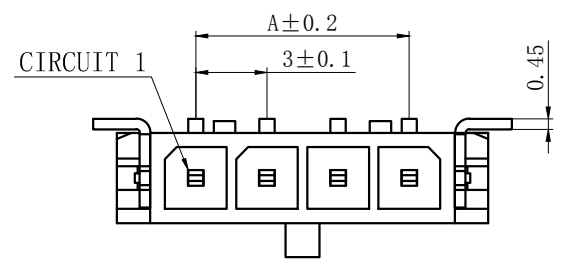
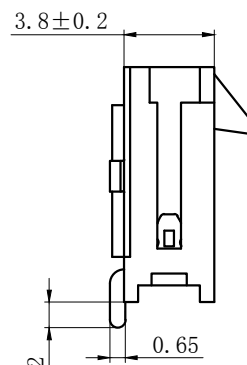
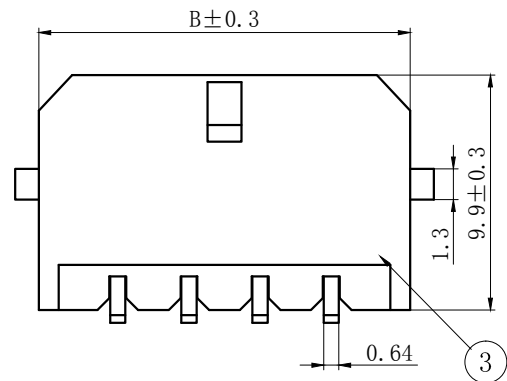
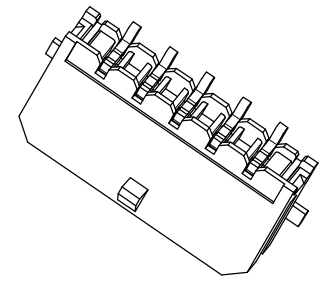
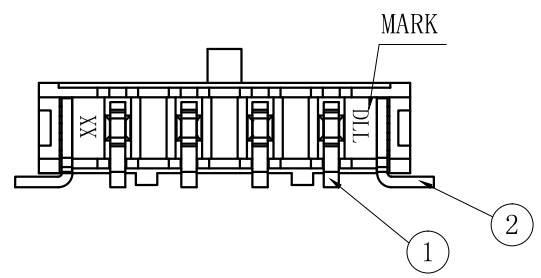
# NOTES

Available in 02 through 12 Circuits.  
 Mates with DL30004-Y Series Housing.  
 Material : LCP UL94V-0.  
 Pin Material : Brass.Matte-plated .

## ORDERING INFORMATION

DL30004 - XX WB - X XX - X X - X - XX  
 1 2 3 4 5 6 7 8 9

- PART NO.
- .NO. OF CIRCUIT
- CONN. TYPE
- MATERIAL: 0:PA66 V0 1:PA66 V1 2:PA66 V2 3:PA66 V0 750 °C  
 4:LCP 5:PBT 6:PA9T 7:9A6T 8: GF PA66
- COLOR: NA:NATURE RE:RED BR:BROWN  
 GY:GREY BK:BLACK YE:YELLOW  
 BL:BLUE GR:GREEN PU:PURPLE PI:PINK  
 OR:ORANGE TR:TRANSPARENT OT:OTHER
- CONTACT MATERIAL: P:PHOSPHOR BRONZE B:BRASS
- FINISH: T:TIN MT:MATT TIN BG/QG:GOLD S:SILVER
- STYLE: Z:WITHOUT K K:WITH K
- SERIAL NUMBER: 00.01.02.....



|    |    |     |     |    |         |
|----|----|-----|-----|----|---------|
| 3  | ③  | 基座  | LCP | 1  | UL94V-0 |
| 2  | ②  | 焊片  | 黄铜  | 2  | 镀亚光     |
| 1  | ①  | 接触件 | 黄铜  | N* | 镀亚光     |
| 序号 | 图号 | 名称  | 材料  | 数量 | 附件      |

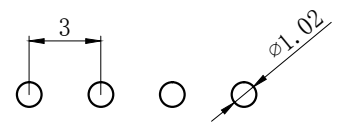
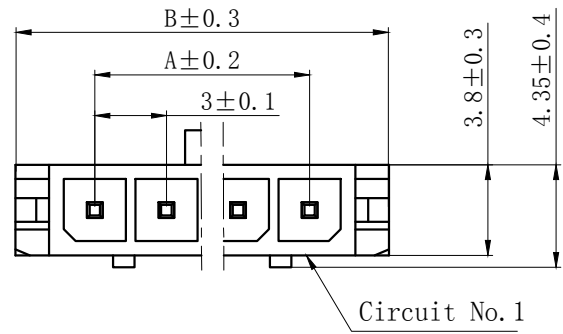
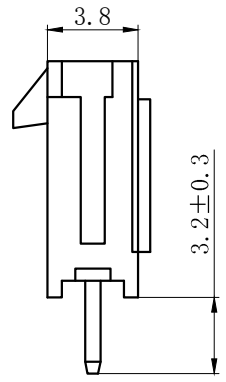
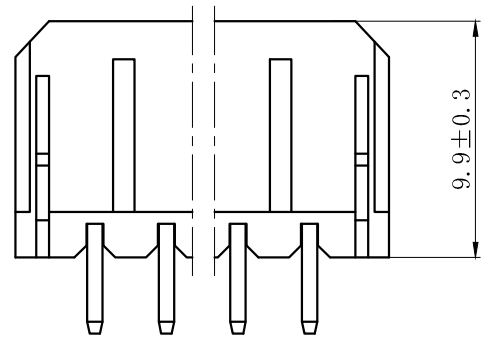
| 孔位 poles | TYPE       | A    | B    | 孔位 poles | TYPE        | A    | B    |
|----------|------------|------|------|----------|-------------|------|------|
| —        | —          | —    | —    | 7        | 43650-7AWB  | 18.0 | 24.6 |
| 2        | 43650-2AWB | 3.0  | 9.6  | 8        | 43650-8AWB  | 21.0 | 27.6 |
| 3        | 43650-3AWB | 6.0  | 12.6 | 9        | 43650-9AWB  | 24.0 | 30.6 |
| 4        | 43650-4AWB | 9.0  | 15.6 | 10       | 43650-10AWB | 27.0 | 33.6 |
| 5        | 43650-5AWB | 12.0 | 18.6 | 11       | 43650-11AWB | 30.0 | 36.6 |
| 6        | 43650-6AWB | 15.0 | 21.6 | 12       | 43650-12AWB | 33.0 | 39.6 |

|   |              |                                      |   |
|---|--------------|--------------------------------------|---|
| GENERAL TOLERANCES (UNLESS SPECIFIED)   |              | ZHE JIANG DELI CONNECTORS CO.,LTD    |   |
| .X: ± 0.25                              | X°: ± 3.0°   | PRODUCT NAME: DL30004-AWB(43650-AWB) | TITLE: 3.0 mm Pitch Wire To Board SMT Wafer |
| .XX: ± 0.15                             | .X°: ± 2.0°  | DR:Yuan Jun Rong                     | DATE:20/07/27                               |
| .XXX: ± 0.01                            | .XX°: ± 1.0° | DATE:20/07/27                        | PART NO: DL30004-XXWB-XXX-XX-X-XX           |
| FINISH:                                 |              | CHKD:Wu Hui                          | SCALE: N/A                                  |
| DRAWING NO: GC-DL30004-XXWB-XXX-XX-X-XX |              | APPD:Ren An De                       | DATE:20/07/27                               |
|   |              |                                      | PAGE: 1/1                                   |
|   |              |                                      | UNITS: mm                                   |
|   |              |                                      | REV.: A                                     |

| REV. | REVISION DESCRIPTION | DATE |
|------|----------------------|------|
|      |                      |      |

**NOTES:**

- 1、Rated voltage : 250V AC.DC
- 2、Rated current : 3.5A AC.DC
- 3、Contact resistance :  $\leq 20m\Omega$
- 4、Insulation resistance :  $\geq 1000M\Omega$
- 5、Withstand voltage : 1000V AC/minute
- 6、Ambient temperature :  $-40^{\circ}C \sim 105^{\circ}C$
- 7、Materials : Nylon UL94V-0(2)
- 8、Green Material RoHS Compliant



PCB LAYOUT

**ORDERING INFORMATION**

DL 30004 - XX A - X XX - X X - X - XX  
 1 2 3 4 5 6 7 8 9

1. PART NO.
2. NO. OF CIRCUIT
3. CONN. TYPE
4. MATERIAL: 0: PA66 V0 1: PA66 V1 2: PA66 V2  
 3: PA66 V0 750°C 4: LCP 5: PBT 6: PA9T
5. COLOR: NA:NATURE RE:RED BR:BROWN  
 GY:GREY BK:BLACK YE:YELLOW  
 BL:BLUE GR:GREEN PU:PURPLE PI:PINK  
 OR:ORANGE TR:TRANSPARENT OT:OTHER
6. CONTACT MATERIAL: P:PHOSPHOR BRONZE B:BRASS
7. FINISH: T:TIN MT:MATT TIN BG/QG:GOLD S:SILVER
8. STYLE: Z:WITHOUT K K:WITH K
9. SERIAL NUMBER: 00.01.02.....

| Circuits | Dimension mm |      |
|----------|--------------|------|
|          | A            | B    |
| 2        | 3.0          | 9.6  |
| 3        | 6.0          | 12.6 |
| 4        | 9.0          | 15.6 |
| 5        | 12.0         | 18.6 |
| 6        | 15.0         | 21.6 |
| 7        | 18.0         | 24.6 |
| 8        | 21.0         | 27.6 |
| 9        | 24.0         | 30.6 |
| 10       | 27.0         | 33.6 |
| 11       | 30.0         | 36.6 |
| 12       | 33.0         | 39.6 |

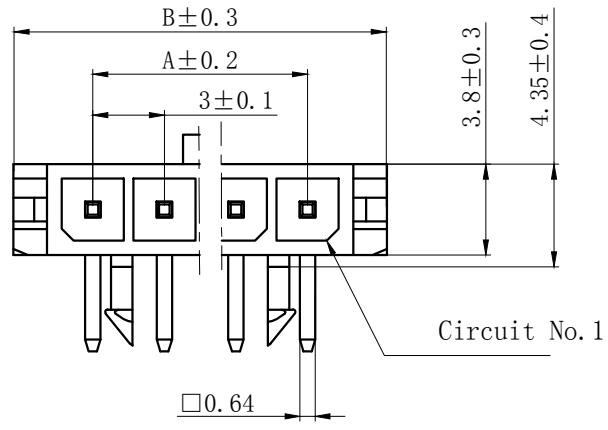
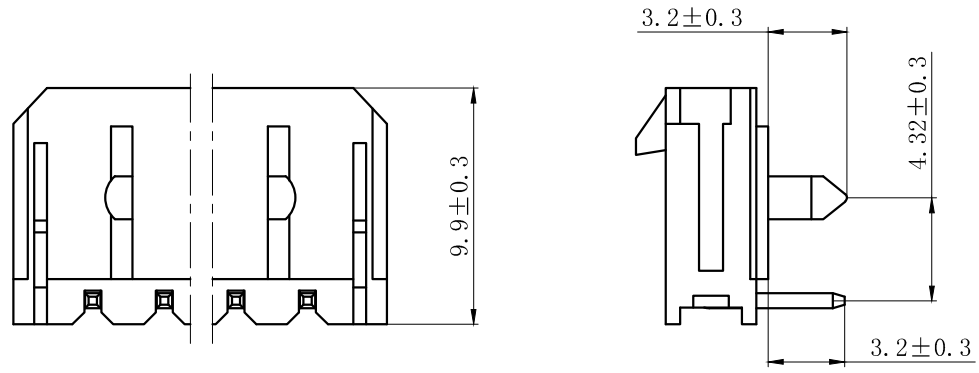
|   |              |                                     |  |
|---|--------------|-------------------------------------|--|
| GENERAL TOLERANCES (UNLESS SPECIFIED)     |              | ZHE JIANG DELI CONNECTORS CO.,LTD   |  |
| .X: ± 0.25                                | X°: ± 3.0°   | PRODUCT NAME:<br>DL30004-A(43650-A) | TITLE: 3.0 mm Pitch<br>Wire To Board Wafer |
| .XX: ± 0.15                               | .X°: ± 2.0°  | DR:Chen Quan Long                   | DATE:20/04/03                              |
| .XXX: ± 0.01                              | .XX°: ± 1.0° | CHKD: Wu Hui                        | DATE:20/04/03                              |
| FINISH:                                   |              | APPD:Ren An De                      | DATE:20/04/03                              |
| DRAWING NO:<br>GC-DL30004-XXA-XXX-XX-X-XX |              |                                     |  |

|                                     |           |
|-------------------------------------|-----------|
| PART NO:<br>DL30004-XXA-XXX-XX-X-XX |           |
| SCALE: N/A                          | PAGE: 1/1 |
| UNITS: mm                           | REV.: A   |

|      |             |      |
|------|-------------|------|
| REV. | REVISION    | DATE |
|      | DESCRIPTION |      |

**NOTES:**

- 1、Rated voltage : 250V AC.DC
- 2、Rated current : 3.5A AC.DC
- 3、Contact resistance :  $\leq 20m\Omega$
- 4、Insulation resistance :  $\geq 1000M\Omega$
- 5、Withstand voltage : 1000V AC/minute
- 6、Ambient temperature :  $-40^{\circ}C \sim 105^{\circ}C$
- 7、Materials : Nylon UL94V-0(2)
- 8、Green Material RoHS Compliant

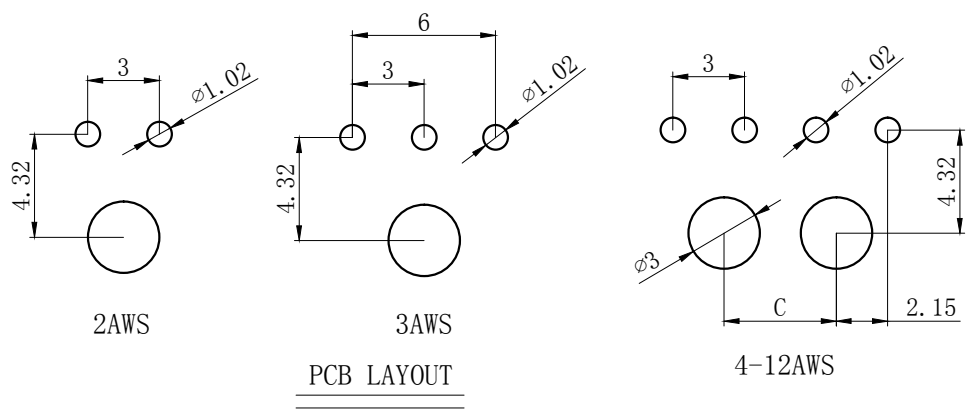


**ORDERING INFORMATION**

DL 30004 - XX WS - X XX - X X - X - XX  
 1 2 3 4 5 6 7 8 9

1. PART NO.
2. NO. OF CIRCUIT
3. CONN. TYPE
4. MATERIAL: 0: PA66 V0 1: PA66 V1 2: PA66 V2  
3: PA66 V0 750°C 4: LCP 5: PBT 6: PA9T
5. COLOR: NA:NATURE RE:RED BR:BROWN  
GY:GREY BK:BLACK YE:YELLOW  
BL:BLUE GR:GREEN PU:PURPLE PI:PINK  
OR:ORANGE TR:TRANSPARENT OT:OTHER
6. CONTACT MATERIAL: P:PHOSPHOR BRONZE B:BRASS
7. FINISH: T:TIN MT:MATT TIN BG/QG:GOLD S:SILVER
8. STYLE: Z:WITHOUT K K:WITH K
9. SERIAL NUMBER: 00.01.02.....

| Circuits | Dimension mm |      |      |
|----------|--------------|------|------|
|          | A            | B    | C    |
| 2        | 3.0          | 9.6  | 0    |
| 3        | 6.0          | 12.6 | 0    |
| 4        | 9.0          | 15.6 | 4.7  |
| 5        | 12.0         | 18.6 | 7.7  |
| 6        | 15.0         | 21.6 | 10.7 |
| 7        | 18.0         | 24.6 | 13.7 |
| 8        | 21.0         | 27.6 | 16.7 |
| 9        | 24.0         | 30.6 | 19.7 |
| 10       | 27.0         | 33.6 | 22.7 |
| 11       | 30.0         | 36.6 | 25.7 |
| 12       | 33.0         | 39.6 | 28.7 |



|                                       |              |                                   |   |
|---------------------------------------|--------------|-----------------------------------|---|
| GENERAL TOLERANCES (UNLESS SPECIFIED) |              | ZHE JIANG DELI CONNECTORS CO.,LTD |   |
| .X: ± 0.25                            | X°: ± 3.0°   | PRODUCT NAME:                     | TITLE: 3.0 mm Pitch Wire To Board Wafer |
| .XX: ± 0.15                           | .X°: ± 2.0°  | DL30004-AWS(43650-AWS)            |   |
| .XXX: ± 0.01                          | .XX°: ± 1.0° | DR:Chen Quan Long                 | DATE:20/04/03                           |
| FINISH:                               |              | CHKD: Wu Hui                      | DATE:20/04/03                           |
| DRAWING NO:                           |              | APPD:Ren An De                    | DATE:20/04/03                           |
| GC-DL30004-XXWS-XXX-XX-X-XX           |              |                                   | PART NO: DL30004-XXWS-XXX-XX-X-XX       |
|                                       |              |                                   | SCALE: N/A                              |
|                                       |              |                                   | PAGE: 1/1                               |
|                                       |              |                                   | UNITS: mm                               |
|                                       |              |                                   | REV.: A                                 |

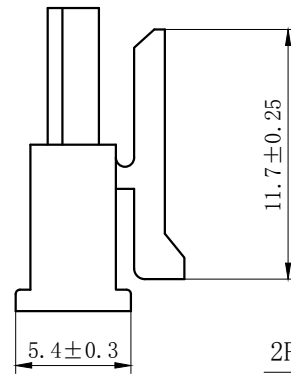
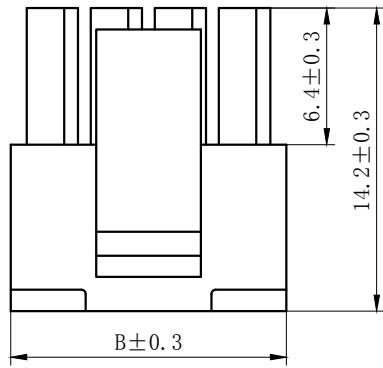
|      |                      |      |      |
|------|----------------------|------|------|
| REV. | REVISION DESCRIPTION | DATE | APPD |
|      |                      |      |      |

3PIN~12PIN

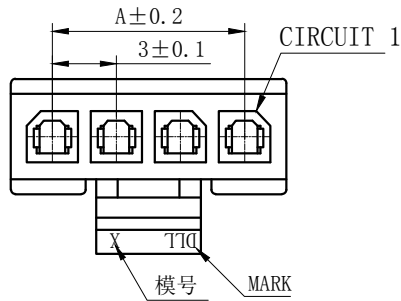
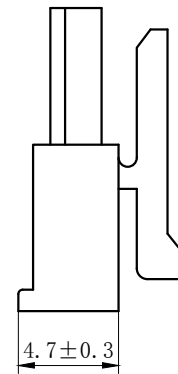
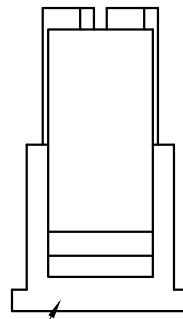
2PIN

NOTES:

- 1、Rated voltage : 250V AC.DC
- 2、Rated current : 3.5A AC.DC
- 3、Contact resistance :  $\leq 20m\Omega$
- 4、Insulation resistance :  $\geq 1000M\Omega$
- 5、Withstand voltage : 1000V AC/minute
- 6、Ambient temperature :  $-40^{\circ}C \sim 105^{\circ}C$
- 7、Materials : Nylon UL94V-0(2)
- 8、Green Material RoHS Compliant



2PIN结构



ORDERING INFORMATION

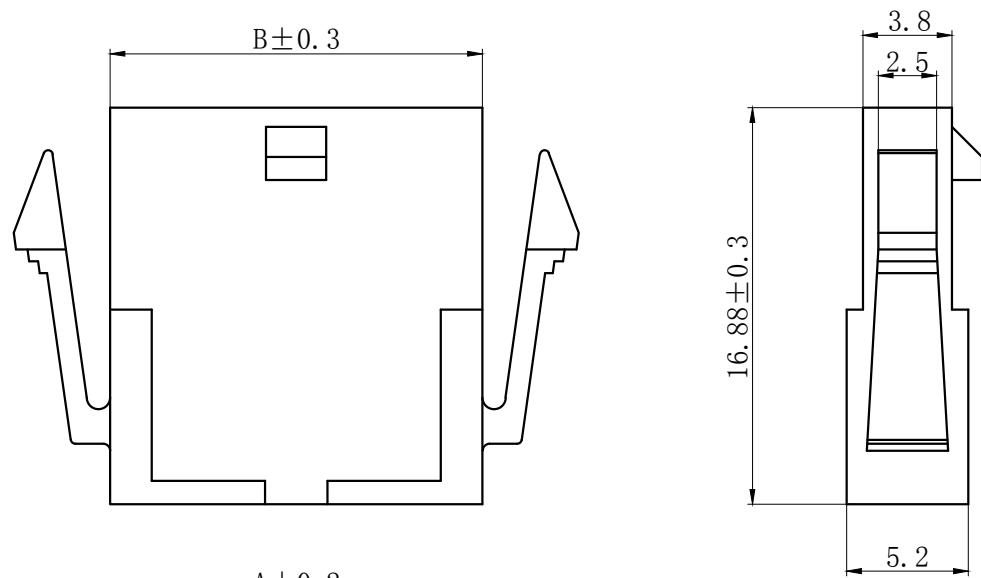
DL 30004 - XX Y - X XX - XX  
 1 2 3 4 5 6

1. PART NO.
2. . NO. OF CIRCUIT
3. CONN. TYPE
4. MATERIAL: 0:PA66 V0 1:PA66 V1 2:PA66 V2  
 3:PA66 V0 750 °C 4:LCP 5:PBT  
 6:PA9T 7:9A6T 8:GF PA66
5. COLOR: NA:NATURE RE:RED BR:BROWN  
 GY:GREY BK:BLACK YE:YELLOW  
 BL:BLUE GR:GREEN PU:PURPLE PI:PINK  
 OR:ORANGE TR:TRANSPARENT OT:OTHER
6. SERIAL NUMBER: 00.01.02.....

| Circuits | Type     | Dimension mm |      | Circuits | Type      | Dimension mm |      |
|----------|----------|--------------|------|----------|-----------|--------------|------|
|          |          | A            | B    |          |           | A            | B    |
| 2        | 43645-2Y | 3.0          | 6.9  | 8        | 43645-8Y  | 21.0         | 24.9 |
| 3        | 43645-3Y | 6.0          | 9.9  | 9        | 43645-9Y  | 24.0         | 27.9 |
| 4        | 43645-4Y | 9.0          | 12.9 | 10       | 43645-10Y | 27.0         | 30.9 |
| 5        | 43645-5Y | 12.0         | 15.9 | 11       | 43645-11Y | 30.0         | 33.9 |
| 6        | 43645-6Y | 15.0         | 18.9 | 12       | 43645-12Y | 33.0         | 36.9 |
| 7        | 43645-7Y | 18.0         | 21.9 |          |           |              |      |

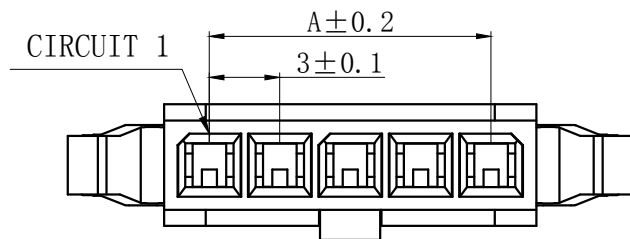
|                                       |              |                                      |                                |
|---------------------------------------|--------------|--------------------------------------|--------------------------------|
| GENERAL TOLERANCES (UNLESS SPECIFIED) |              | ZHE JIANG DELI CONNECTORS CO., LTD   |                                |
| .X: ± 0.25                            | X°: ± 3.0°   | PRODUCT NAME:<br>DL30004-Y (43645-Y) | TITLE:<br>3.0mm Pitch Housing  |
| .XX: ± 0.15                           | .X°: ± 2.0°  | DR: Chen Quan Long                   | DATE:20/08/01                  |
| .XXX: ± 0.01                          | .XX°: ± 1.0° | DATE:20/08/01                        | PART NO:<br>DL30004-XXY-XXX-XX |
| FINISH:                               |              | CHKD:Wu Hui                          | DATE:20/08/01                  |
| DRAWING NO:<br>GC-DL30004-XXY-XXX-XX  |              | APPD:Ren An De                       | DATE:20/08/01                  |
|                                       |              | SCALE: N/A                           | PAGE: 1/1                      |
|                                       |              | UNITS: mm                            | REV.: A                        |

| REV. | REVISION DESCRIPTION | DATE | APPD |
|------|----------------------|------|------|
|      |                      |      |      |



**NOTES:**

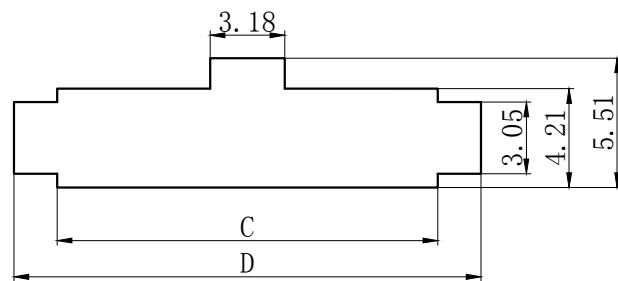
- 1、Rated voltage : 250V AC.DC
- 2、Rated current : 3.5A AC.DC
- 3、Contact resistance :  $\leq 20m\Omega$
- 4、Insulation resistance :  $\geq 1000M\Omega$
- 5、Withstand voltage : 1000V AC/minute
- 6、Ambient temperature :  $-40^{\circ}C \sim 105^{\circ}C$
- 7、Materials : Nylon UL94V-0(2)
- 8、Green Material RoHS Compliant



**ORDERING INFORMATION**

DL30004 - XX R - X XX - XX  
 1 2 3 4 5 6

1. PART NO.
2. NO. OF CIRCUIT
3. CONN. TYPE
4. MATERIAL: 0:PA66 V0 1:PA66 V1 2:PA66 V2  
 3:PA66 V0 750°C 4:LCP 5:PBT  
 6:PA9T 7:PA6T 8:GF PA66
5. COLOR: NA:NATURE RE:RED BR:BROWN  
 GY:GREY BK:BLACK YE:YELLOW  
 BL:BLUE GR:GREEN PU:PURPLE PI:PINK  
 OR:ORANGE TR:TRANSPARENT OT:OTHER
6. SERIAL NUMBER: 00.01.02.....



安装尺寸

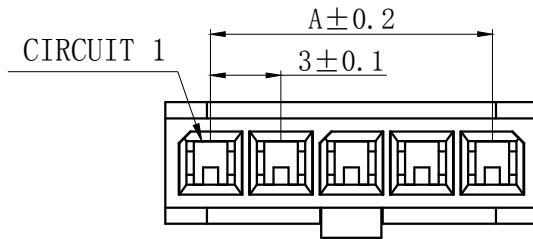
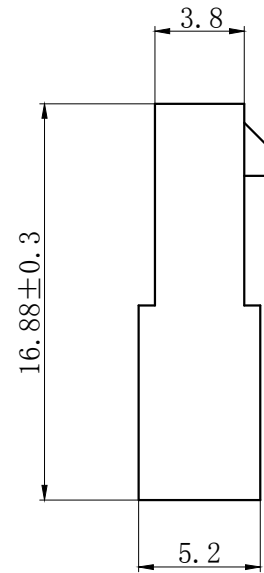
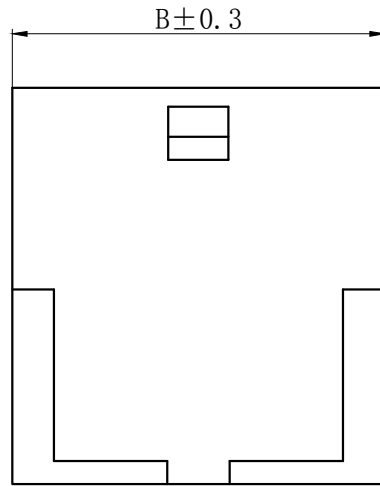
| Circuits | Type      | Dimension mm |       |       |       |
|----------|-----------|--------------|-------|-------|-------|
|          |           | A            | B     | C     | D     |
| 2        | 43640-2R  | 3.00         | 6.90  | 7.21  | 10.90 |
| 3        | 43640-3R  | 6.00         | 9.90  | 10.21 | 13.90 |
| 4        | 43640-4R  | 9.00         | 12.90 | 13.21 | 16.90 |
| 5        | 43640-5R  | 12.00        | 15.90 | 16.21 | 19.90 |
| 6        | 43640-6R  | 15.00        | 18.90 | 19.21 | 22.90 |
| 7        | 43640-7R  | 18.00        | 21.90 | 22.21 | 25.90 |
| 8        | 43640-8R  | 21.00        | 24.90 | 25.21 | 28.90 |
| 9        | 43640-9R  | 24.00        | 27.90 | 28.21 | 31.90 |
| 10       | 43640-10R | 27.00        | 30.90 | 31.21 | 34.90 |
| 11       | 43640-11R | 30.00        | 33.90 | 34.21 | 37.90 |
| 12       | 43640-12R | 33.00        | 36.90 | 37.21 | 40.90 |

| GENERAL TOLERANCES (UNLESS SPECIFIED) |               | ZHE JIANG DELI CONNECTORS CO., LTD  |   |
|---------------------------------------|---------------|-------------------------------------|---|
| .X: ± 0.25                            | X° : ± 3.0°   | PRODUCT NAME:<br>DL30004-R(43640-R) | TITLE:<br>3.0mm Pitch<br>Wire To Wire Housing |
| .XX: ± 0.15                           | .X° : ± 2.0°  | DR: Yuan Jun Rong                   | DATE:21/08/01                                 |
| .XXX: ± 0.01                          | .XX° : ± 1.0° | DATE:21/08/01                       | PART NO:<br>DL30004-XXR-XXX-XX                |
| FINISH:                               |               | CHKD:Wu Hui                         | DATE:21/08/01                                 |
| DRAWING NO:<br>GC-DL30004-XXR-XXX-XX  |               | APPD:Ren An De                      | DATE:21/08/01                                 |
|                                       |               |                                     | SCALE: N/A                                    |
|                                       |               |                                     | PAGE: 1/2                                     |
|                                       |               |                                     | UNITS: mm                                     |
|                                       |               |                                     | REV. : A                                      |

| REV. | REVISION DESCRIPTION | DATE | APPD |
|------|----------------------|------|------|
|      |                      |      |      |

**NOTES:**

- 1、Rated voltage : 250V AC.DC
- 2、Rated current : 3.5A AC.DC
- 3、Contact resistance :  $\leq 20m\Omega$
- 4、Insulation resistance :  $\geq 1000M\Omega$
- 5、Withstand voltage : 1000V AC/minute
- 6、Ambient temperature :  $-40^{\circ}C \sim 105^{\circ}C$
- 7、Materials : Nylon UL94V-0(2)
- 8、Green Material RoHS Compliant



**ORDERING INFORMATION**

DL30004 - XX RF - X XX - XX  
 1 2 3 4 5 6

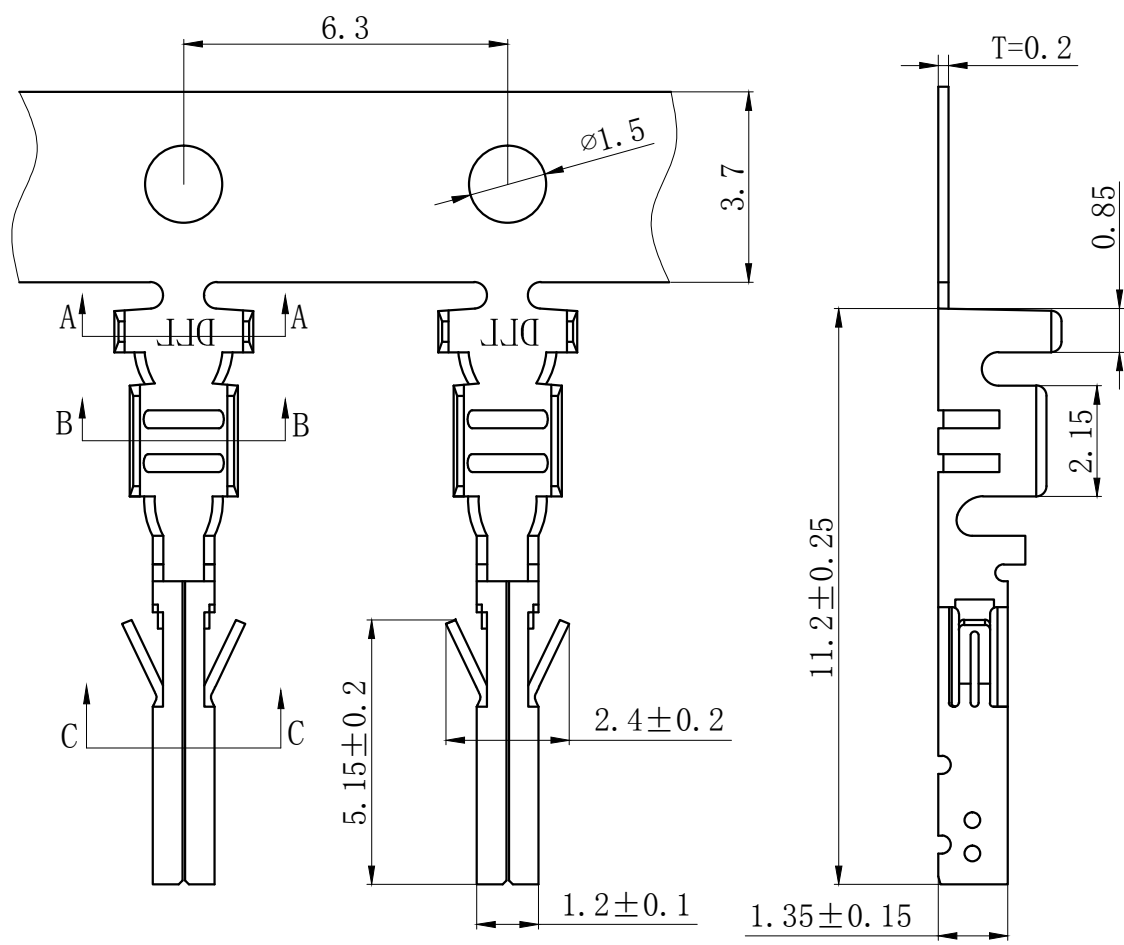
1. PART NO.
2. NO. OF CIRCUIT
3. CONN. TYPE
4. MATERIAL: 0:PA66 V0 1:PA66 V1 2:PA66 V2  
 3:PA66 V0 750 °C 4:LCP 5:PBT  
 6:PA9T 7:9A6T 8:GF PA66
5. COLOR: NA:NATURE RE:RED BR:BROWN  
 GY:GREY BK:BLACK YE:YELLOW  
 BL:BLUE GR:GREEN PU:PURPLE PI:PINK  
 OR:ORANGE TR:TRANSPARENT OT:OTHER
6. SERIAL NUMBER: 00.01.02.....

| Circuits | Type      | Dimension mm |      | Circuits | Type       | Dimension mm |      |
|----------|-----------|--------------|------|----------|------------|--------------|------|
|          |           | A            | B    |          |            | A            | B    |
| 2        | 43640-2RF | 3.0          | 6.9  | 8        | 43640-8RF  | 21.0         | 24.9 |
| 3        | 43640-3RF | 6.0          | 9.9  | 9        | 43640-9RF  | 24.0         | 27.9 |
| 4        | 43640-4RF | 9.0          | 12.9 | 10       | 43640-10RF | 27.0         | 30.9 |
| 5        | 43640-5RF | 12.0         | 15.9 | 11       | 43640-11RF | 30.0         | 33.9 |
| 6        | 43640-6RF | 15.0         | 18.9 | 12       | 43640-12RF | 33.0         | 36.9 |
| 7        | 43640-7RF | 18.0         | 21.9 |          |            |              |      |

| GENERAL TOLERANCES (UNLESS SPECIFIED) |              | ZHE JIANG DELI CONNECTORS CO., LTD    |   |
|---------------------------------------|--------------|---------------------------------------|---|
| .X: ± 0.25                            | X°: ± 3.0°   | PRODUCT NAME:<br>DL30004-RF(43640-RF) | TITLE:<br>3.0mm Pitch<br>Wire To Wire Housing |
| .XX: ± 0.15                           | .X°: ± 2.0°  | DR: Yuan Jun Rong                     | DATE:21/08/01                                 |
| .XXX: ± 0.01                          | .XX°: ± 1.0° | CHKD:Wu Hui                           | DATE:21/08/01                                 |
| FINISH:<br>_____                      |              | APPD:Ren An De                        | DATE:21/08/01                                 |
| DRAWING NO: GC-DL30004-XXRF-XXX-XX    |              | UNITS: mm                             | REV.: A                                       |



| REV. | REVISION DESCRIPTION | DATE | APPD |
|------|----------------------|------|------|
|      |                      |      |      |



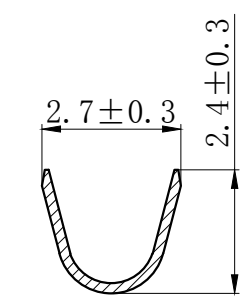
### NOTES

Used in DL30001-Y Series Housing.  
 Accepts AWG #28~20 Wire Range.  
 Material : Phosphor Bronze .  
 Finish: Tin plated.  
 Qty/Reel: 10000 PCS.  
 Thickness: 0.2 mm.  
 Green Material RoHS Compliant.

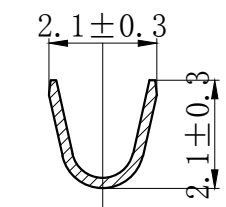
### ORDERING INFORMATION

DL XXXXX - XX - X - X - X - XX  
 1 2 3 4 5 6

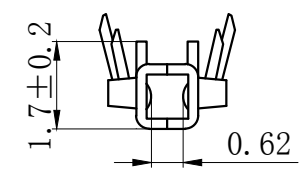
- PART NO.
- TERMINAL CODE
- MATERIAL TYPE: 1: PHOSPHOR BRONZE 2: BRASS 3: IRON  
4: STAINLESS STEEL 5: OTHER
- TECHNICS: 0: UNPLATED 1: FIRST PLATING 2: POST PLATING  
3: OTHER
- FINISH: 1: TIN-PLATED 2: MATTE PLATED 3: NICKEL PLATED  
4: PICKLING 5: SILVER PLATED 6: GOLD PLATED  
7: GALVANIZED 8: OTHER
- SERIAL NUMBER: 00.01.02.....



SECTION A-A



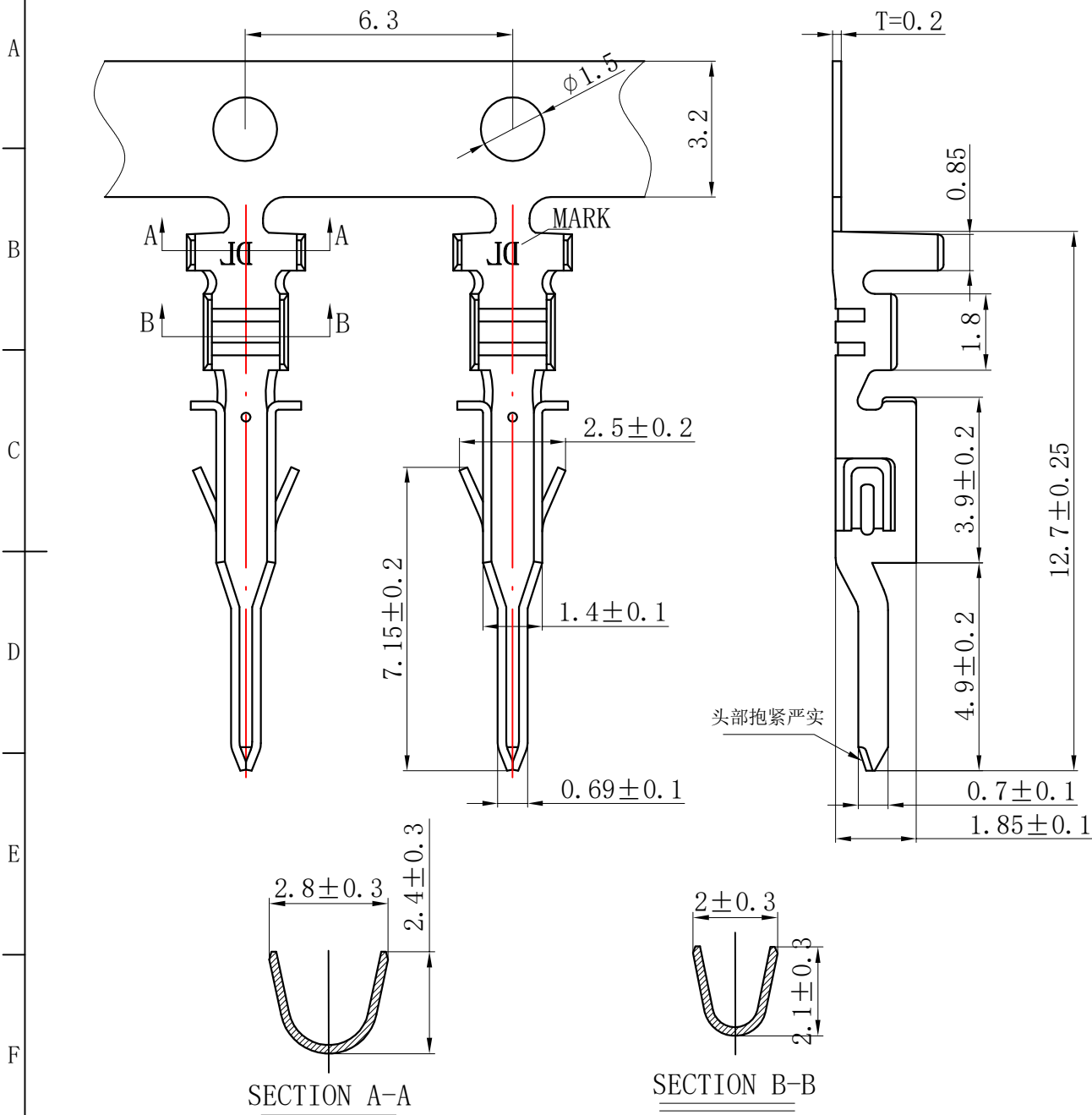
SECTION B-B



SECTION C-C

| GENERAL TOLERANCES (UNLESS SPECIFIED) |                       | ZHE JIANG DELI CONNECTORS CO., LTD  |   |
|---------------------------------------|-----------------------|-------------------------------------|---|
| .X: $\pm 0.25$                        | .X°: $\pm 3.0^\circ$  | PRODUCT NAME:<br>DL30001-T(43030-T) | TITLE:<br>3.0mm Pitch<br>Wire To Board Crimp Terminal |
| .XX: $\pm 0.15$                       | .X°: $\pm 2.0^\circ$  | DR: Chen Quan Long                  | DATE: 20.03.11  |
| .XXX: $\pm 0.01$                      | .XX°: $\pm 1.0^\circ$ | CHKD: Wu Hui                        | DATE: 20.03.11  |
| FINISH:                               |                       | APPD: Ren An De                     | DATE: 20.03.11  |
| DRAWING NO: GC-DL30001-T-X-X-X-XX     |                       | SCALE: N/A                          | PAGE: 1/1   |
|                                       |                       | UNITS: mm                           | REV.: A   |

| REV. | REVISION DESCRIPTION | DATE | APPD |
|------|----------------------|------|------|
|      |                      |      |      |



**NOTES**

Used in DL30001-R Series Housing.  
 Accepts AWG #28~20 Wire Range.  
 Material : Phosphor Bronze .  
 Finish: Tin plated.  
 Qty/Reel: 10000 PCS.  
 Thickness: 0.2 mm.  
 Green Material RoHS Compliant.

**ORDERING INFORMATION**

DL XXXXX - XX - X - X - X - XX  
 1 2 3 4 5 6

- PART NO.
- TERMINAL CODE
- MATERIAL TYPE: 1: PHOSPJOR BRONZE 2: BRASS 3: IRON  
4: STAINLESS STEEL 5: OTHER
- TECHNICS: 0: UNPLATED 1: FIRST PLATING 2: POST PLATING  
3: OTHER
- FINISH: 1: TIN-PLATED 2: MATTE PLATED 3: NICKEL PLATED  
4: PICKLING 5: SILVER PLATED 6: GOLD PLATED  
7: GALVANIZED 8: OTHER
- SERIAL NUMBER: 00.01.02....

| GENERAL TOLERANCES (UNLESS SPECIFIED) |                 | ZHE JIANG DELI CONNECTORS CO., LTD |                             |
|---------------------------------------|-----------------|------------------------------------|-----------------------------|
| .X: ± 0.25                            | X°: ± 3.0°      | PRODUCT NAME:                      | TITLE: 3.0mm Pitch          |
| .XX: ± 0.15                           | .X°: ± 2.0°     | DL30001-RT (43031-RT)              | Wire To Wire Crimp Terminal |
| .XXX: ± 0.01                          | .XX°: ± 1.0°    | DR: Chen Quan Long                 | DATE: 20.03.11              |
| FINISH:                               |                 | CHKD: Wu Hui                       | DATE: 20.03.11              |
| DRAWING NO: GC-DL30001-RT-X-X-X-XX    | APPD: Ren An De | DATE: 20.03.11                     | SCALE: N/A                  |
|                                       |                 | UNITS: mm                          | PAGE: 1/1                   |
|                                       |                 |                                    | REV.: A                     |

## X-ON Electronics

Largest Supplier of Electrical and Electronic Components

*Click to view similar products for [Headers & Wire Housings](#) category:*

*Click to view products by [DLL](#) manufacturer:*

Other Similar products are found below :

[0015917161](#) [0022155065](#) [57102-F02-18ULF](#) [58102-G61-06LF](#) [582553-1](#) [01.001.5753.1](#) [0050291907](#) [02.125.8002.8](#) [609-3404](#) [61062-3](#)  
[CSU011177004](#) [622-0430](#) [622-3653LF](#) [63453-116](#) [636-1030](#) [636-1427](#) [636-3427](#) [636-4007](#) [641938-9](#) [65495-038](#) [65692-001LF](#) [65781-018](#)  
[65781-047](#) [65817-010LF](#) [65817-015LF](#) [67095-007LF](#) [67601157](#) [68631-112](#) [68645-018](#) [699319-000](#) [70.362.1628.0](#) [70-4210](#) [70-4226B](#) [70-](#)  
[4853B](#) [71.350.2428.0](#) [733-134](#) [733-162](#) [MHR-64-VUAL](#) [80.063.4001.1](#) [800-90-001-10-001000](#) [801-43-002-10-013000](#) [801-43-006-10-](#)  
[002000](#) [803-43-024-10-001000](#) [803-93-012-10-001000](#) [8-1437020-4](#) [819-22-004-30-001101](#) [820-22-006-30-001101](#) [820-22-008-30-001101](#)  
[821-22-002-10-001101](#) [821-22-003-10-002101](#)