

CD Power Inductors

功率电感系列



■ Features

- 1.Excellent solderability and high heat resistance.
- 2.Excellent terminal strength construction.
- 3.Packed in embossed carrier tape and can be used by automatic mounting machine.

● 特征

- 1.絕佳的焊錫性及高溫耐熱性。
- 2.絕佳的端面強度結構。
- 3.捲軸包裝，可用於自動插件機器。

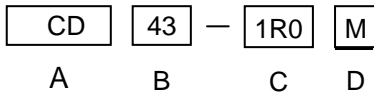
■ Applications

Power supply for VCR,OA equipment ,LCD television set, notebook, DC to DC converters, DC to AC inverters etc.

● 用途

VCR、辦公室自動設備、液晶電視機、筆記型電腦、直流-直流整流器、直流-交流換流器等的電源供應器。

■ Feed Free Part Numbering



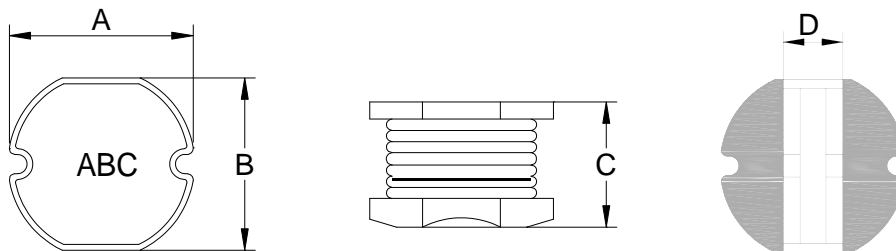
A.Series

B.Dimension $A \times C$

C.Inductance 1R0=1.0uH,100=10uH,101=100uH

D.Inductance Tolerance K=±10%,M=±20%

■ Dimensions



| Series | A | B | C | D ref |
|--------|----------|---------|---------|-------|
| CD31 | 3.5±0.3 | 3.0±0.3 | 1.6±0.3 | 1.0 |
| CD32 | 3.5±0.3 | 3.0±0.3 | 2.1±0.3 | 1.0 |
| CD42 | 4.5±0.3 | 4.0±0.3 | 2.0±0.3 | 1.4 |
| CD43 | 4.5±0.3 | 4.0±0.3 | 3.2±0.3 | 1.4 |
| CD52 | 5.8±0.3 | 5.2±0.3 | 2.0±0.3 | 1.6 |
| CD53 | 5.8±0.3 | 5.2±0.3 | 3.0±0.3 | 1.6 |
| CD54 | 5.8±0.3 | 5.2±0.3 | 4.5±0.3 | 1.6 |
| CD73 | 7.8±0.3 | 7.0±0.3 | 3.5±0.3 | 2.4 |
| CD75 | 7.8±0.3 | 7.0±0.3 | 5.0±0.3 | 2.4 |
| CD104 | 10.0±0.3 | 9.0±0.3 | 4.0±0.3 | 3.1 |
| CD105 | 10.0±0.3 | 9.0±0.3 | 5.4±0.3 | 3.1 |

Unit:mm

■CD31 Series

| Part Number | Inductance (uH) | Test Frequency (Hz) | DCR (Ω)max | IDC (A)max |
|-------------|-----------------|---------------------|---------------------|------------|
| CD31-1R0M | 1.0±20% | 100K/0.3V | 0.048 | 1.60 |
| CD31-1R5M | 1.5±20% | 100K/0.3V | 0.078 | 1.55 |
| CD31-2R2M | 2.2±20% | 100K/0.3V | 0.100 | 1.47 |
| CD31-3R3M | 3.3±20% | 100K/0.3V | 0.126 | 1.34 |
| CD31-3R9M | 3.9±20% | 100K/0.3V | 0.140 | 1.24 |
| CD31-4R7M | 4.7±20% | 100K/0.3V | 0.158 | 1.22 |
| CD31-5R6M | 5.6±20% | 100K/0.3V | 0.186 | 1.09 |
| CD31-6R8M | 6.8±20% | 100K/0.3V | 0.213 | 0.96 |
| CD31-8R2M | 8.2±20% | 100K/0.3V | 0.238 | 0.84 |
| CD31-100M | 10±20% | 1K/0.3V | 0.307 | 0.70 |
| CD31-120M | 12±20% | 1K/0.3V | 0.372 | 0.65 |
| CD31-150M | 15±20% | 1K/0.3V | 0.466 | 0.59 |
| CD31-180M | 18±20% | 1K/0.3V | 0.515 | 0.54 |
| CD31-220M | 22±20% | 1K/0.3V | 0.656 | 0.48 |
| CD31-270M | 27±20% | 1K/0.3V | 0.774 | 0.43 |
| CD31-330M | 33±20% | 1K/0.3V | 1.021 | 0.37 |
| CD31-390M | 39±20% | 1K/0.3V | 1.122 | 0.32 |
| CD31-470M | 47±20% | 1K/0.3V | 1.509 | 0.26 |
| CD31-560M | 56±20% | 1K/0.3V | 1.675 | 0.24 |
| CD31-680M | 68±20% | 1K/0.3V | 1.919 | 0.23 |
| CD31-820M | 82±20% | 1K/0.3V | 2.644 | 0.21 |
| CD31-101M | 100±20% | 1K/0.3V | 2.870 | 0.19 |
| CD31-121M | 120±20% | 1K/0.3V | 4.084 | 0.17 |
| CD31-151M | 150±20% | 1K/0.3V | 4.774 | 0.16 |
| CD31-181M | 180±20% | 1K/0.3V | 5.699 | 0.14 |

■CD32 Series

| Part Number | Inductance (uH) | Test Frequency (Hz) | DCR (Ω)max | IDC (A)max |
|-------------|-----------------|---------------------|---------------------|------------|
| CD32-1R0M | 1.0±20% | 100K/0.3V | 0.035 | 3.34 |
| CD32-2R2M | 2.2±20% | 100K/0.3V | 0.059 | 2.35 |
| CD32-3R3M | 3.3±20% | 100K/0.3V | 0.098 | 1.83 |
| CD32-4R7M | 4.7±20% | 100K/0.3V | 0.137 | 1.50 |
| CD32-5R6M | 5.6±20% | 100K/0.3V | 0.157 | 1.36 |
| CD32-6R8M | 6.8±20% | 100K/0.3V | 0.196 | 1.22 |
| CD32-8R2M | 8.2±20% | 100K/0.3V | 0.230 | 1.09 |
| CD32-100M | 10±20% | 1K/0.3V | 0.286 | 0.95 |
| CD32-120M | 12±20% | 1K/0.3V | 0.322 | 0.88 |
| CD32-150M | 15±20% | 1K/0.3V | 0.398 | 0.82 |
| CD32-180M | 18±20% | 1K/0.3V | 0.520 | 0.76 |
| CD32-220M | 22±20% | 1K/0.3V | 0.660 | 0.63 |
| CD32-270M | 27±20% | 1K/0.3V | 0.760 | 0.62 |

■CD32 Series

| Part Number | Inductance (uH) | Test Frequency (Hz) | DCR (Ω)max | IDC (A)max |
|-------------|-----------------|---------------------|---------------------|------------|
| CD32-330M | 33±20% | 1K/0.3V | 0.87 | 0.56 |
| CD32-390M | 39±20% | 1K/0.3V | 1.10 | 0.51 |
| CD32-470M | 47±20% | 1K/0.3V | 1.25 | 0.47 |
| CD32-560M | 56±20% | 1K/0.3V | 1.59 | 0.42 |
| CD32-680M | 68±20% | 1K/0.3V | 1.82 | 0.38 |
| CD32-820M | 82±20% | 1K/0.3V | 2.44 | 0.34 |
| CD32-101M | 100±20% | 1K/0.3V | 2.84 | 0.31 |
| CD32-121M | 120±20% | 1K/0.3V | 3.19 | 0.28 |
| CD32-151M | 150±20% | 1K/0.3V | 4.20 | 0.16 |
| CD32-181M | 180±20% | 1K/0.3V | 5.11 | 0.15 |
| CD32-221M | 220±20% | 1K/0.3V | 7.31 | 0.14 |
| CD32-271M | 270±20% | 1K/0.3V | 8.24 | 0.12 |
| CD32-331M | 330±20% | 1K/0.3V | 10.19 | 0.10 |

■CD42 Series

| Part Number | Inductance (uH) | Test Frequency (Hz) | DCR (Ω)max | IDC (A)max |
|-------------|-----------------|---------------------|---------------------|------------|
| CD42-2R7M | 2.7±20% | 100K/0.3V | 0.065 | 1.50 |
| CD42-4R7M | 4.7±20% | 100K/0.3V | 0.095 | 1.40 |
| CD42-100M | 10±20% | 1K/0.3V | 0.18 | 0.97 |
| CD42-220M | 22±20% | 1K/0.3V | 0.45 | 0.60 |
| CD42-260M | 26±20% | 1K/0.3V | 0.47 | 0.55 |
| CD42-330M | 33±20% | 1K/0.3V | 0.50 | 0.54 |
| CD42-390M | 39±20% | 1K/0.3V | 0.70 | 0.50 |
| CD42-470M | 47±20% | 1K/0.3V | 0.80 | 0.48 |
| CD42-560M | 56±20% | 1K/0.3V | 0.90 | 0.45 |
| CD42-101M | 100±20% | 1K/0.3V | 1.50 | 0.10 |
| CD42-151M | 150±20% | 1K/0.3V | 2.30 | 0.09 |

■CD43 Series

| Part Number | Inductance (uH) | Test Frequency (Hz) | DCR (Ω)max | IDC (A)max |
|-------------|-----------------|---------------------|---------------------|------------|
| CD43-1R0M | 1.0±20% | 100K/0.3V | 0.033 | 3.80 |
| CD43-2R2M | 2.2±20% | 100K/0.3V | 0.047 | 2.60 |
| CD43-3R3M | 3.3±20% | 100K/0.3V | 0.052 | 2.43 |
| CD43-3R9M | 3.9±20% | 100K/0.3V | 0.058 | 2.15 |
| CD43-4R7M | 4.7±20% | 100K/0.3V | 0.094 | 1.70 |
| CD43-6R8M | 6.8±20% | 100K/0.3V | 0.117 | 1.41 |
| CD43-8R2M | 8.2±20% | 100K/0.3V | 0.132 | 1.26 |

■CD43 Series

| Part Number | Inductance (uH) | Test Frequency (Hz) | DCR (Ω)max | IDC (A)max |
|-------------|-----------------|---------------------|---------------------|------------|
| CD43-100M | 10±20% | 1K/0.3V | 0.182 | 1.15 |
| CD43-120M | 12±20% | 1K/0.3V | 0.210 | 1.05 |
| CD43-150M | 15±20% | 1K/0.3V | 0.235 | 0.92 |
| CD43-180M | 18±20% | 1K/0.3V | 0.338 | 0.84 |
| CD43-220M | 22±20% | 1K/0.3V | 0.378 | 0.76 |
| CD43-270M | 27±20% | 1K/0.3V | 0.522 | 0.71 |
| CD43-330M | 33±20% | 1K/0.3V | 0.540 | 0.64 |
| CD43-390M | 39±20% | 1K/0.3V | 0.587 | 0.59 |
| CD43-470M | 47±20% | 1K/0.3V | 0.844 | 0.54 |
| CD43-560M | 56±20% | 1K/0.3V | 0.937 | 0.50 |
| CD43-680M | 68±20% | 1K/0.3V | 1.117 | 0.46 |
| CD43-820M | 82±20% | 1K/0.3V | 1.180 | 0.43 |
| CD43-101M | 100±20% | 1K/0.3V | 1.190 | 0.41 |
| CD43-121M | 120±20% | 1K/0.3V | 1.220 | 0.38 |
| CD43-151M | 150±20% | 1K/0.3V | 1.400 | 0.35 |
| CD43-181M | 180±20% | 1K/0.3V | 1.500 | 0.31 |
| CD43-221M | 220±20% | 1K/0.3V | 1.641 | 0.29 |
| CD43-271M | 270±20% | 1K/0.3V | 2.890 | 0.26 |
| CD43-331M | 330±20% | 1K/0.3V | 3.760 | 0.20 |

■CD52 Series

| Part Number | Inductance (uH) | Test Frequency (Hz) | DCR (Ω)max | IDC (A)max |
|-------------|-----------------|---------------------|---------------------|------------|
| CD52-1R0M | 1.0±20% | 100K/0.3V | 0.05 | 4.2 |
| CD52-2R2M | 2.2±20% | 100K/0.3V | 0.08 | 3.2 |
| CD52-3R3M | 3.3±20% | 100K/0.3V | 0.12 | 2.4 |
| CD52-3R9M | 3.9±20% | 100K/0.3V | 0.14 | 2.0 |
| CD52-4R7M | 4.7±20% | 100K/0.3V | 0.15 | 1.8 |
| CD52-5R6M | 5.6±20% | 100K/0.3V | 0.16 | 1.5 |
| CD52-6R8M | 6.8±20% | 100K/0.3V | 0.17 | 1.4 |
| CD52-8R2M | 8.2±20% | 100K/0.3V | 0.20 | 1.3 |
| CD52-100M | 10±20% | 1K/0.3V | 0.23 | 1.1 |
| CD52-120M | 12±20% | 1K/0.3V | 0.25 | 1.05 |
| CD52-150M | 15±20% | 1K/0.3V | 0.30 | 1.00 |
| CD52-180M | 18±20% | 1K/0.3V | 0.35 | 0.90 |
| CD52-220M | 22±20% | 1K/0.3V | 0.40 | 0.85 |
| CD52-270M | 27±20% | 1K/0.3V | 0.50 | 0.75 |
| CD52-330M | 33±20% | 1K/0.3V | 0.55 | 0.70 |
| CD52-390M | 39±20% | 1K/0.3V | 0.65 | 0.60 |
| CD52-470M | 47±20% | 1K/0.3V | 0.75 | 0.55 |
| CD52-560M | 56±20% | 1K/0.3V | 0.95 | 0.50 |

■CD52 Series

| Part Number | Inductance (uH) | Test Frequency (Hz) | DCR (Ω)max | IDC (A)max |
|-------------|-----------------|---------------------|---------------------|------------|
| CD52-680M | 68±20% | 1K/0.3V | 1.20 | 0.45 |
| CD52-820M | 82±20% | 1K/0.3V | 1.40 | 0.40 |
| CD52-101M | 100±20% | 1K/0.3V | 1.75 | 0.35 |
| CD52-121M | 120±20% | 1K/0.3V | 2.0 | 0.25 |
| CD52-151M | 150±20% | 1K/0.3V | 2.6 | 0.22 |
| CD52-181M | 180±20% | 1K/0.3V | 3.7 | 0.18 |
| CD52-221M | 220±20% | 1K/0.3V | 4.0 | 0.19 |
| CD52-271M | 270±20% | 1K/0.3V | 4.2 | 0.20 |

■CD53 Series

| Part Number | Inductance (uH) | Test Frequency (Hz) | DCR (Ω)max | IDC (A)max |
|-------------|-----------------|---------------------|---------------------|------------|
| CD53-1R0M | 1.0±20% | 100K/0.3V | 0.038 | 4.5 |
| CD53-2R2M | 2.2±20% | 100K/0.3V | 0.045 | 3.5 |
| CD53-3R3M | 3.3±20% | 100K/0.3V | 0.055 | 2.8 |
| CD53-3R9M | 3.9±20% | 100K/0.3V | 0.064 | 2.6 |
| CD53-4R7M | 4.7±20% | 100K/0.3V | 0.072 | 2.5 |
| CD53-5R6M | 5.6±20% | 100K/0.3V | 0.084 | 2.4 |
| CD53-6R8M | 6.8±20% | 100K/0.3V | 0.09 | 2.2 |
| CD53-8R2M | 8.2±20% | 100K/0.3V | 0.10 | 2.0 |
| CD53-100M | 10±20% | 1K/0.3V | 0.12 | 1.8 |
| CD53-120M | 12±20% | 1K/0.3V | 0.13 | 1.8 |
| CD53-150M | 15±20% | 1K/0.3V | 0.15 | 1.7 |
| CD53-180M | 18±20% | 1K/0.3V | 0.18 | 1.6 |
| CD53-220M | 22±20% | 1K/0.3V | 0.22 | 1.5 |
| CD53-270M | 27±20% | 1K/0.3V | 0.24 | 1.4 |
| CD53-330M | 33±20% | 1K/0.3V | 0.30 | 1.1 |
| CD53-390M | 39±20% | 1K/0.3V | 0.40 | 1.0 |
| CD53-470M | 47±20% | 1K/0.3V | 0.43 | 0.90 |
| CD53-560M | 56±20% | 1K/0.3V | 0.5 | 0.85 |
| CD53-680M | 68±20% | 1K/0.3V | 0.6 | 0.80 |
| CD53-820M | 82±20% | 1K/0.3V | 0.8 | 0.65 |
| CD53-101M | 100±20% | 1K/0.3V | 0.9 | 0.60 |
| CD53-121M | 120±20% | 1K/0.3V | 1.0 | 0.58 |
| CD53-151M | 150±20% | 1K/0.3V | 1.3 | 0.43 |
| CD53-181M | 180±20% | 1K/0.3V | 1.5 | 0.41 |
| CD53-221M | 220±20% | 1K/0.3V | 2.0 | 0.38 |
| CD53-271M | 270±20% | 1K/0.3V | 2.5 | 0.35 |
| CD53-331M | 330±20% | 1K/0.3V | 3.2 | 0.28 |

■CD54 Series

| Part Number | Inductance (uH) | Test Frequency (Hz) | DCR (Ω)max | IDC (A)max |
|-------------|-----------------|---------------------|---------------------|------------|
| CD54-1R0M | 1.0±20% | 100K/0.3V | 0.020 | 5.0 |
| CD54-1R5M | 1.5±20% | 100K/0.3V | 0.025 | 4.8 |
| CD54-2R2M | 2.2±20% | 100K/0.3V | 0.017 | 4.5 |
| CD54-2R7M | 2.7±20% | 100K/0.3V | 0.030 | 3.5 |
| CD54-3R3M | 3.3±20% | 100K/0.3V | 0.034 | 3.0 |
| CD54-4R7M | 4.7±20% | 100K/0.3V | 0.04 | 2.8 |
| CD54-6R8M | 6.8±20% | 100K/0.3V | 0.08 | 2.5 |
| CD54-100M | 10±20% | 1K/0.3V | 0.10 | 1.44 |
| CD54-120M | 12±20% | 1K/0.3V | 0.12 | 1.40 |
| CD54-150M | 15±20% | 1K/0.3V | 0.14 | 1.30 |
| CD54-180M | 18±20% | 1K/0.3V | 0.15 | 1.23 |
| CD54-220M | 22±20% | 1K/0.3V | 0.18 | 1.11 |
| CD54-270M | 27±20% | 1K/0.3V | 0.20 | 0.97 |
| CD54-330M | 33±20% | 1K/0.3V | 0.23 | 0.88 |
| CD54-390M | 39±20% | 1K/0.3V | 0.32 | 0.80 |
| CD54-470M | 47±20% | 1K/0.3V | 0.37 | 0.72 |
| CD54-560M | 56±20% | 1K/0.3V | 0.42 | 0.68 |
| CD54-680M | 68±20% | 1K/0.3V | 0.46 | 0.61 |
| CD54-820M | 82±20% | 1K/0.3V | 0.60 | 0.58 |
| CD54-101M | 100±20% | 1K/0.3V | 0.70 | 0.52 |
| CD54-121M | 120±20% | 1K/0.3V | 0.93 | 0.48 |
| CD54-151M | 150±20% | 1K/0.3V | 1.10 | 0.40 |
| CD54-181M | 180±20% | 1K/0.3V | 1.38 | 0.38 |
| CD54-221M | 220±20% | 1K/0.3V | 1.57 | 0.35 |

■CD73 Series

| Part Number | Inductance (uH) | Test Frequency (Hz) | DCR (Ω)max | IDC (A)max |
|-------------|-----------------|---------------------|---------------------|------------|
| CD73-1R0M | 1.0±20% | 100K/0.3V | 0.018 | 7.0 |
| CD73-1R5M | 1.5±20% | 100K/0.3V | 0.020 | 6.0 |
| CD73-2R2M | 2.2±20% | 100K/0.3V | 0.023 | 5.0 |
| CD73-3R3M | 3.3±20% | 100K/0.3V | 0.025 | 4.0 |
| CD73-4R7M | 4.7±20% | 100K/0.3V | 0.039 | 3.5 |
| CD73-6R8M | 6.8±20% | 100K/0.3V | 0.04 | 2.8 |
| CD73-100M | 10±20% | 1K/0.3V | 0.08 | 1.44 |
| CD73-120M | 12±20% | 1K/0.3V | 0.09 | 1.39 |
| CD73-150M | 15±20% | 1K/0.3V | 0.10 | 1.24 |
| CD73-180M | 18±20% | 1K/0.3V | 0.11 | 1.12 |
| CD73-220M | 22±20% | 1K/0.3V | 0.13 | 1.07 |
| CD73-270M | 27±20% | 1K/0.3V | 0.15 | 0.94 |
| CD73-330M | 33±20% | 1K/0.3V | 0.17 | 0.85 |
| CD73-390M | 39±20% | 1K/0.3V | 0.22 | 0.74 |

■CD73 Series

| Part Number | Inductance (uH) | Test Frequency (Hz) | DCR (Ω)max | IDC (A)max |
|-------------|-----------------|---------------------|---------------------|------------|
| CD73-470M | 47±20% | 1K/0.3V | 0.25 | 0.68 |
| CD73-560M | 56±20% | 1K/0.3V | 0.28 | 0.64 |
| CD73-680M | 68±20% | 1K/0.3V | 0.33 | 0.59 |
| CD73-820M | 82±20% | 1K/0.3V | 0.41 | 0.54 |
| CD73-101M | 100±20% | 1K/0.3V | 0.48 | 0.51 |
| CD73-121M | 120±20% | 1K/0.3V | 0.54 | 0.49 |

■CD75 Series

| Part Number | Inductance (uH) | Test Frequency (Hz) | DCR (Ω)max | IDC (A)max |
|-------------|-----------------|---------------------|---------------------|------------|
| CD75-1R0M | 1.0±20% | 100K/0.3V | 0.013 | 7.5 |
| CD75-1R5M | 1.5±20% | 100K/0.3V | 0.023 | 5.3 |
| CD75-2R2M | 2.2±20% | 100K/0.3V | 0.028 | 4.5 |
| CD75-3R3M | 3.3±20% | 100K/0.3V | 0.045 | 4.0 |
| CD75-4R7M | 4.7±20% | 100K/0.3V | 0.058 | 3.2 |
| CD75-6R8M | 6.8±20% | 100K/0.3V | 0.07 | 2.8 |
| CD75-100M | 10±20% | 1K/0.3V | 0.07 | 2.3 |
| CD75-120M | 12±20% | 1K/0.3V | 0.08 | 2.0 |
| CD75-150M | 15±20% | 1K/0.3V | 0.09 | 1.8 |
| CD75-180M | 18±20% | 1K/0.3V | 0.10 | 1.6 |
| CD75-220M | 22±20% | 1K/0.3V | 0.11 | 1.5 |
| CD75-270M | 27±20% | 1K/0.3V | 0.12 | 1.3 |
| CD75-330M | 33±20% | 1K/0.3V | 0.13 | 1.2 |
| CD75-390M | 39±20% | 1K/0.3V | 0.16 | 1.1 |
| CD75-470M | 47±20% | 1K/0.3V | 0.18 | 1.0 |
| CD75-560M | 56±20% | 1K/0.3V | 0.24 | 0.94 |
| CD75-680M | 68±20% | 1K/0.3V | 0.28 | 0.85 |
| CD75-820M | 82±20% | 1K/0.3V | 0.37 | 0.78 |
| CD75-101M | 100±20% | 1K/0.3V | 0.43 | 0.72 |
| CD75-121M | 120±20% | 1K/0.3V | 0.47 | 0.66 |
| CD75-151M | 150±20% | 1K/0.3V | 0.64 | 0.58 |
| CD75-181M | 180±20% | 1K/0.3V | 0.71 | 0.51 |
| CD75-221M | 220±20% | 1K/0.3V | 0.96 | 0.49 |
| CD75-271M | 270±20% | 1K/0.3V | 1.11 | 0.42 |
| CD75-331M | 330±20% | 1K/0.3V | 1.26 | 0.40 |
| CD75-391M | 390±20% | 1K/0.3V | 1.77 | 0.36 |
| CD75-471M | 470±20% | 1K/0.3V | 1.96 | 0.34 |

■CD104 Series

| Part Number | Inductance (uH) | Test Frequency (Hz) | DCR (Ω)max | IDC (A)max |
|-------------|-----------------|---------------------|------------|------------|
| CD104-1R0M | 1.0±20% | 100K/0.3V | 0.012 | 8.70 |
| CD104-1R5M | 1.5±20% | 100K/0.3V | 0.020 | 5.40 |
| CD104-2R2M | 2.2±20% | 100K/0.3V | 0.028 | 2.85 |
| CD104-3R3M | 3.3±20% | 100K/0.3V | 0.038 | 2.75 |
| CD104-4R7M | 4.7±20% | 100K/0.3V | 0.040 | 2.70 |
| CD104-6R8M | 6.8±20% | 100K/0.3V | 0.042 | 2.65 |
| CD104-100M | 10±20% | 1K/0.3V | 0.048 | 2.60 |
| CD104-120M | 12±20% | 1K/0.3V | 0.05 | 2.38 |
| CD104-150M | 15±20% | 1K/0.3V | 0.07 | 1.87 |
| CD104-180M | 18±20% | 1K/0.3V | 0.08 | 1.73 |
| CD104-220M | 22±20% | 1K/0.3V | 0.09 | 1.60 |
| CD104-270M | 27±20% | 1K/0.3V | 0.10 | 1.44 |
| CD104-330M | 33±20% | 1K/0.3V | 0.12 | 1.26 |
| CD104-390M | 39±20% | 1K/0.3V | 0.15 | 1.20 |
| CD104-470M | 47±20% | 1K/0.3V | 0.17 | 1.10 |
| CD104-560M | 56±20% | 1K/0.3V | 0.20 | 1.01 |
| CD104-680M | 68±20% | 1K/0.3V | 0.22 | 0.91 |
| CD104-820M | 82±20% | 1K/0.3V | 0.25 | 0.85 |
| CD104-101M | 100±20% | 1K/0.3V | 0.34 | 0.74 |
| CD104-121M | 120±20% | 1K/0.3V | 0.40 | 0.69 |
| CD104-151M | 150±20% | 1K/0.3V | 0.54 | 0.61 |
| CD104-181M | 180±20% | 1K/0.3V | 0.62 | 0.56 |
| CD104-221M | 220±20% | 1K/0.3V | 0.72 | 0.53 |
| CD104-271M | 270±20% | 1K/0.3V | 0.95 | 0.45 |
| CD104-331M | 330±20% | 1K/0.3V | 1.10 | 0.42 |
| CD104-391M | 390±20% | 1K/0.3V | 1.24 | 0.38 |
| CD104-471M | 470±20% | 1K/0.3V | 1.53 | 0.35 |
| CD104-561M | 560±20% | 1K/0.3V | 1.90 | 0.32 |

■CD105 Series

| Part Number | Inductance (uH) | Test Frequency (Hz) | DCR (Ω)max | IDC (A)max |
|-------------|-----------------|---------------------|------------|------------|
| CD105-1R0M | 1.0±20% | 100K/0.3V | 0.009 | 8.63 |
| CD105-2R2M | 2.2±20% | 100K/0.3V | 0.016 | 7.20 |
| CD105-3R3M | 3.3±20% | 100K/0.3V | 0.018 | 6.50 |
| CD105-4R7M | 4.7±20% | 100K/0.3V | 0.02 | 5.50 |
| CD105-6R8M | 6.8±20% | 100K/0.3V | 0.04 | 4.50 |
| CD105-100M | 10±20% | 1K/0.3V | 0.06 | 2.60 |
| CD105-150M | 15±20% | 1K/0.3V | 0.07 | 1.72 |
| CD105-180M | 18±20% | 1K/0.3V | 0.08 | 1.58 |
| CD105-220M | 22±20% | 1K/0.3V | 0.09 | 1.42 |



■CD105 Series

| Part Number | Inductance (uH) | Test Frequency (Hz) | DCR (Ω)max | IDC (A)max |
|-------------|-----------------|---------------------|---------------------|------------|
| CD105-270M | 27 \pm 20% | 1K/0.3V | 0.10 | 1.32 |
| CD105-330M | 33 \pm 20% | 1K/0.3V | 0.11 | 1.16 |
| CD105-390M | 39 \pm 20% | 1K/0.3V | 0.12 | 1.10 |
| CD105-470M | 47 \pm 20% | 1K/0.3V | 0.14 | 1.00 |
| CD105-560M | 56 \pm 20% | 1K/0.3V | 0.19 | 0.93 |
| CD105-680M | 68 \pm 20% | 1K/0.3V | 0.21 | 0.85 |
| CD105-820M | 82 \pm 20% | 1K/0.3V | 0.28 | 0.79 |
| CD105-101M | 100 \pm 20% | 1K/0.3V | 0.34 | 0.72 |
| CD105-121M | 120 \pm 20% | 1K/0.3V | 0.37 | 0.63 |
| CD105-151M | 150 \pm 20% | 1K/0.3V | 0.51 | 0.55 |
| CD105-181M | 180 \pm 20% | 1K/0.3V | 0.57 | 0.50 |
| CD105-221M | 220 \pm 20% | 1K/0.3V | 0.78 | 0.47 |
| CD105-271M | 270 \pm 20% | 1K/0.3V | 0.87 | 0.41 |
| CD105-331M | 330 \pm 20% | 1K/0.3V | 1.20 | 0.37 |
| CD105-471M | 470 \pm 20% | 1K/0.3V | 1.50 | 0.33 |
| CD105-561M | 560 \pm 20% | 1K/0.3V | 1.90 | 0.30 |
| CD105-681M | 680 \pm 20% | 1K/0.3V | 2.25 | 0.28 |
| CD105-821M | 820 \pm 20% | 1K/0.3V | 2.55 | 0.24 |

- * The maximum rated current is a DC current which causes initial inductance to decrease by 25% or temperature to rise by 40°C, whichever is smaller(at ambient reference temperature:20 °C).
- * Operating Temperature:-25°C to +85°C.

X-ON Electronics

Largest Supplier of Electrical and Electronic Components

Click to view similar products for [Fixed Inductors](#) category:

Click to view products by [DMBJ](#) manufacturer:

Other Similar products are found below :

[CR32NP-151KC](#) [CR32NP-180KC](#) [CR32NP-181KC](#) [CR32NP-1R5MC](#) [CR32NP-390KC](#) [CR32NP-3R9MC](#) [CR32NP-680KC](#) [CR32NP-820KC](#) [CR32NP-8R2MC](#) [CR43NP-390KC](#) [CR43NP-560KC](#) [CR43NP-680KC](#) [CR54NP-181KC](#) [CR54NP-470LC](#) [CR54NP-820KC](#) [CR54NP-8R5MC](#) [70F224AI](#) [MGDQ4-00004-P](#) [MHL1ECTTP18NJ](#) [MHQ1005P10NJ](#) [MHQ1005P1N0S](#) [MHQ1005P2N4S](#) [MHQ1005P3N6S](#) [MHQ1005P5N1S](#) [MHQ1005P8N2J](#) [PE-51506NL](#) [PE-53601NL](#) [PE-53602NL](#) [PE-53630NL](#) [PE-53824SNLT](#) [PE-92100NL](#) [PG0434.801NLT](#) [PG0936.113NLT](#) [9220-20](#) [9310-16](#) [PM06-2N7](#) [PM06-39NJ](#) [A01TK](#) [1206CS-471XJ](#) [HC2LP-R47-R](#) [HC2-R47-R](#) [HC3-2R2-R](#) [HCF1305-3R3-R](#) [1206CS-151XG](#) [RCH664NP-140L](#) [RCH664NP-4R7M](#) [RCH8011NP-221L](#) [RCP1317NP-332L](#) [RCP1317NP-391L](#) [RCR1010NP-470M](#)